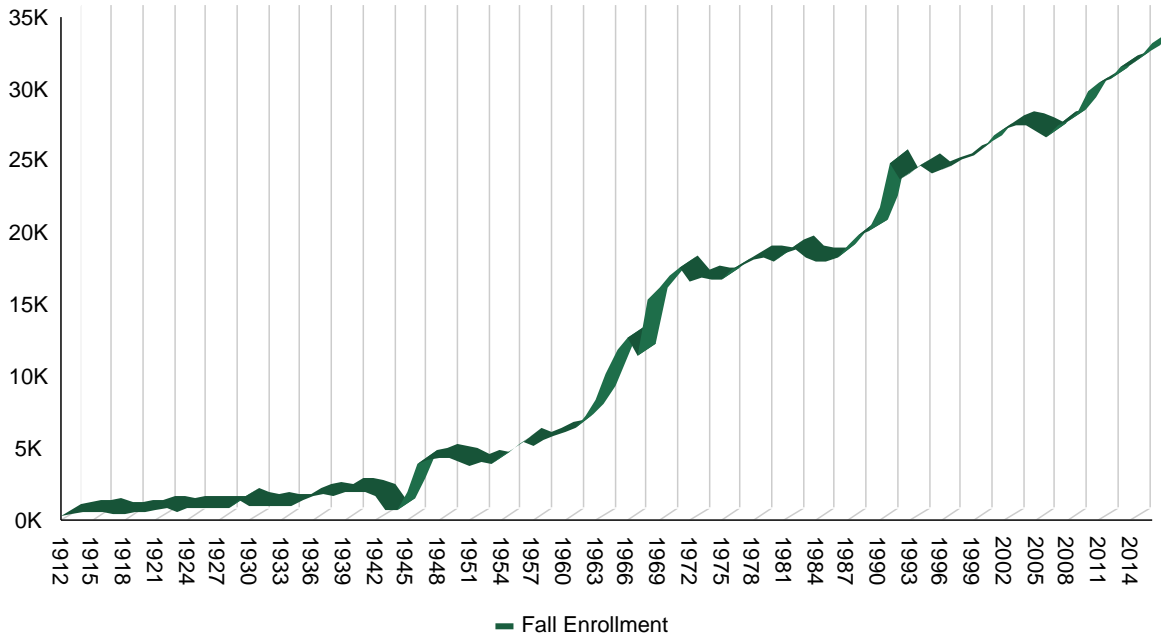


History of Student Enrollment since 1912



Fall Term Enrollment History - All Students at Census

Fall	Enrollment	Fall	Enrollment	Fall	Enrollment	Fall	Enrollment	Fall	Enrollment	Fall	Enrollment
1912	367	1932	1,067	1952	4,036	1972	16,656	1992	23,707	2012	30,647
1913	492	1933	985	1953	3,938	1973	16,860	1993	24,203	2013	31,514
1914	569	1934	1,042	1954	4,478	1974	16,798	1994	24,739	2014	31,725
1915	579	1935	1,472	1955	4,992	1975	16,809	1995	24,123	2015	32,236
1916	663	1936	1,732	1956	5,525	1976	17,426	1996	24,465	2016	33,198
1917	501	1937	1,844	1957	5,282	1977	17,812	1997	24,719		
1918	493	1938	1,750	1958	5,593	1978	18,223	1998	25,186		
1919	633	1939	2,048	1959	5,977	1979	18,255	1999	25,452		
1920	567	1940	2,057	1960	6,131	1980	18,083	2000	26,005		
1921	819	1941	1,982	1961	6,529	1981	18,651	2001	26,809		
1922	841	1942	1,707	1962	7,304	1982	18,909	2002	27,290		
1923	675	1943	756	1963	8,460	1983	18,295	2003	27,543		
1924	871	1944	736	1964	10,175	1984	18,094	2004	27,536		
1925	876	1945	2,057	1965	11,848	1985	18,084	2005	27,133		
1926	909	1946	4,015	1966	12,701	1986	18,381	2006	26,723		
1927	904	1947	4,175	1967	11,510	1987	19,192	2007	27,569		
1928	914	1948	4,431	1968	15,361	1988	19,885	2008	27,800		
1929	1,408	1949	4,392	1969	16,252	1989	20,149	2009	28,547		
1930	1,072	1950	4,138	1970	17,045	1990	21,820	2010	29,932		
1931	1,050	1951	3,820	1971	17,608	1991	24,911	2011	30,450		

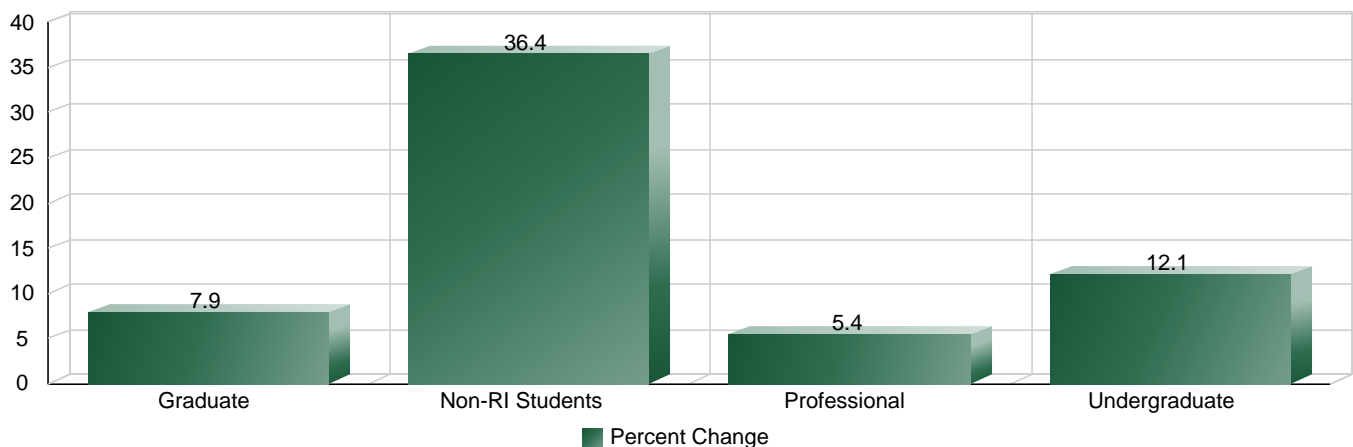
Fall Term University Enrollment History - Number of Students at Census

	2009	2010	2011	2012	2013	2014	2015	2016
<b>RI Students</b>	<b>25,413</b>	<b>26,356</b>	<b>26,735</b>	<b>26,769</b>	<b>27,034</b>	<b>27,086</b>	<b>27,566</b>	<b>28,297</b>
<b>1-Undergraduate</b>	21,204	21,953	22,300	22,412	22,565	22,506	23,009	23,768
<b>2-Graduate</b>	3,671	3,864	3,887	3,808	3,927	4,047	4,008	3,962
<b>3-Professional</b>	538	539	548	549	542	533	549	567
<b>Non-RI Students</b>	<b>3,134</b>	<b>3,576</b>	<b>3,715</b>	<b>3,878</b>	<b>4,480</b>	<b>4,639</b>	<b>4,670</b>	<b>4,901</b>
<b>10-Semester at Sea</b>	0	0	0	0	0	0	0	550
<b>11-Employee</b>	272	238	256	400	433	479	514	484
<b>12-Guest</b>	305	291	215	165	160	123	96	81
<b>13-CSU Online</b>	2,160	2,601	2,778	2,841	3,140	3,218	3,264	3,143
<b>14-Study Abroad</b>	135	167	183	188	192	208	168	152
<b>15-Other</b>	262	279	283	284	555	611	628	491
<b>Total</b>	<b>28,547</b>	<b>29,932</b>	<b>30,450</b>	<b>30,647</b>	<b>31,514</b>	<b>31,725</b>	<b>32,236</b>	<b>33,198</b>

Fall Term University Enrollment History - Percent of Students at Census

	2009	2010	2011	2012	2013	2014	2015	2016
<b>RI Students</b>								
<b>1-Undergraduate</b>	74%	73%	73%	73%	72%	71%	71%	72%
<b>2-Graduate</b>	13%	13%	13%	12%	12%	13%	12%	12%
<b>3-Professional</b>	2%	2%	2%	2%	2%	2%	2%	2%
<b>Non-RI Students</b>								
<b>10-Semester at Sea</b>	0	0	0	0	0	0	0	2%
<b>11-Employee</b>	1%	1%	1%	1%	1%	2%	2%	1%
<b>12-Guest</b>	1%	1%	1%	1%	1%	0%	0%	0%
<b>13-CSU Online</b>	8%	9%	9%	9%	10%	10%	10%	9%
<b>14-Study Abroad</b>	0%	1%	1%	1%	1%	1%	1%	0%
<b>15-Other</b>	1%	1%	1%	1%	2%	2%	2%	1%

Percent Change from to



## Fall Term University Enrollment History - Number of Students By Sub-Population

	2009	2010	2011	2012	2013	2014	2015	2016
<b>Female</b>	13,209	13,526	13,812	13,829	13,909	13,891	14,102	14,507
<b>Male</b>	12,204	12,830	12,923	12,940	13,125	13,195	13,464	13,790
<b>Non-First Generation</b>	19,317	20,278	20,446	20,403	20,852	21,038	21,285	21,939
<b>First Generation</b>	6,096	6,078	6,289	6,366	6,182	6,048	6,281	6,358
<b>Non-Pell Recipient</b>	21,146	21,194	21,299	21,269	21,624	21,884	22,432	
<b>Pell Recipient</b>	4,267	5,162	5,436	5,500	5,410	5,202	5,134	
<b>Non-STEM Major</b>	16,085	16,540	16,542	16,271	15,866	15,531	15,383	15,504
<b>STEM Major</b>	9,328	9,816	10,193	10,498	11,168	11,555	12,183	12,793
<b>Non-Veteran</b>	24,976	25,748	25,975	25,937	26,090	26,231	26,737	27,426
<b>Veteran</b>	437	608	760	832	944	855	829	871
<b>Non-Minority</b>	22,076	22,725	22,825	22,584	22,603	22,456	22,644	22,885
<b>Minority</b>	3,337	3,631	3,910	4,185	4,431	4,630	4,922	5,412
<b>Non-Minority</b>								
International	891	1,040	1,133	1,226	1,506	1,859	1,981	1,985
No Response	1,652	1,374	1,568	1,653	1,533	1,191	1,280	1,011
White	19,533	20,311	20,124	19,705	19,564	19,406	19,383	19,889
<b>Minority</b>								
Asian	497	481	468	468	528	609	644	723
Black	402	457	508	515	511	569	555	591
Hawaiian/Pac. Islander	52	46	42	36	22	27	30	33
Hispanic/Latino	1,705	1,881	2,066	2,254	2,401	2,560	2,797	3,084
Multi-Racial	538	656	718	808	873	726	749	850
Native American	143	110	108	104	96	139	147	131
<b>Total</b>	<b>25,413</b>	<b>26,356</b>	<b>26,735</b>	<b>26,769</b>	<b>27,034</b>	<b>27,086</b>	<b>27,566</b>	<b>28,297</b>

\* Data reflects RI students on campus as of the Census date of each Fall term.

**Fall Term University Enrollment History By College - Number of Majors  
(Includes Primary and Secondary Majors)**

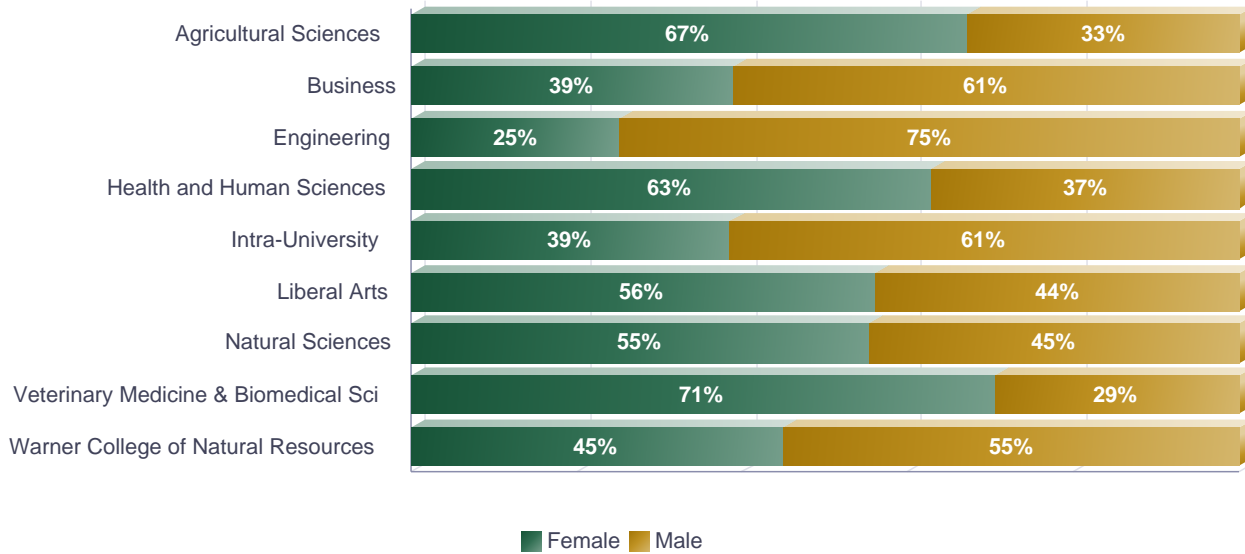
	2009	2010	2011	2012	2013	2014	2015	2016
<b>Agricultural Sciences</b>	<b>1,591</b>	<b>1,697</b>	<b>1,735</b>	<b>1,748</b>	<b>1,702</b>	<b>1,809</b>	<b>1,833</b>	<b>1,840</b>
1-Undergraduate	1,364	1,444	1,485	1,493	1,474	1,561	1,600	1,615
2-Graduate	227	253	250	255	228	248	233	225
<b>Business</b>	<b>2,194</b>	<b>2,315</b>	<b>2,408</b>	<b>2,480</b>	<b>2,524</b>	<b>2,573</b>	<b>2,575</b>	<b>2,625</b>
1-Undergraduate	1,982	2,075	2,154	2,236	2,262	2,258	2,279	2,354
2-Graduate	212	240	254	244	262	315	296	271
<b>Engineering</b>	<b>2,171</b>	<b>2,370</b>	<b>2,507</b>	<b>2,687</b>	<b>2,952</b>	<b>3,045</b>	<b>3,333</b>	<b>3,467</b>
1-Undergraduate	1,673	1,807	1,898	2,080	2,270	2,318	2,553	2,701
2-Graduate	498	563	609	607	682	727	780	766
<b>Health and Human Sciences</b>	<b>5,980</b>	<b>5,984</b>	<b>5,888</b>	<b>5,526</b>	<b>5,299</b>	<b>5,363</b>	<b>5,193</b>	<b>5,361</b>
1-Undergraduate	5,156	5,175	5,124	4,830	4,631	4,710	4,599	4,760
2-Graduate	824	809	764	696	668	653	594	601
<b>Intra-University</b>	<b>3,062</b>	<b>3,260</b>	<b>2,961</b>	<b>3,088</b>	<b>3,028</b>	<b>3,045</b>	<b>3,094</b>	<b>2,833</b>
1-Undergraduate	2,871	3,043	2,716	2,757	2,675	2,672	2,767	2,542
2-Graduate	191	217	245	331	353	373	327	291
<b>Liberal Arts</b>	<b>5,945</b>	<b>6,052</b>	<b>6,165</b>	<b>5,968</b>	<b>5,687</b>	<b>5,342</b>	<b>5,194</b>	<b>5,223</b>
1-Undergraduate	5,319	5,406	5,533	5,337	5,092	4,760	4,604	4,657
2-Graduate	626	646	632	631	595	582	590	566
<b>Natural Sciences</b>	<b>3,805</b>	<b>3,941</b>	<b>4,218</b>	<b>4,359</b>	<b>4,540</b>	<b>4,457</b>	<b>4,514</b>	<b>4,836</b>
1-Undergraduate	3,225	3,340	3,604	3,748	3,892	3,815	3,881	4,182
2-Graduate	580	601	614	611	648	642	633	654
<b>Veterinary Medicine &amp; Biomedical Sci</b>	<b>1,537</b>	<b>1,557</b>	<b>1,551</b>	<b>1,531</b>	<b>1,499</b>	<b>1,496</b>	<b>1,635</b>	<b>1,726</b>
1-Undergraduate	639	656	637	668	640	647	727	785
2-Graduate	360	362	366	314	317	316	359	374
3-Professional	538	539	548	549	542	533	549	567
<b>Warner College of Natural Resources</b>	<b>1,265</b>	<b>1,455</b>	<b>1,578</b>	<b>1,641</b>	<b>1,731</b>	<b>1,750</b>	<b>1,828</b>	<b>1,898</b>
1-Undergraduate	1,067	1,230	1,369	1,402	1,484	1,505	1,587	1,653
2-Graduate	198	225	209	239	247	245	241	245
<b>Total</b>	<b>27,550</b>	<b>28,631</b>	<b>29,011</b>	<b>29,028</b>	<b>28,962</b>	<b>28,880</b>	<b>29,199</b>	<b>29,809</b>

\* Data reflects RI students on campus as of the Census date of each Fall term.

Fall 2016 Undergraduate Enrollment by College and Gender - Number of Students by Primary Major

	Female	Male	Total
<b>Agricultural Sciences</b>	984	480	<b>1,464</b>
<b>Business</b>	894	1,399	<b>2,293</b>
<b>Engineering</b>	676	2,001	<b>2,677</b>
<b>Health and Human Sciences</b>	2,762	1,632	<b>4,394</b>
<b>Intra-University</b>	958	1,527	<b>2,485</b>
<b>Liberal Arts</b>	2,292	1,792	<b>4,084</b>
<b>Natural Sciences</b>	2,219	1,785	<b>4,004</b>
<b>Veterinary Medicine &amp; Biomedical Sci</b>	546	228	<b>774</b>
<b>Warner College of Natural Resources</b>	717	876	<b>1,593</b>
<b>Total</b>	<b>12,048</b>	<b>11,720</b>	<b>23,768</b>

Fall 2016 Undergraduate Enrollment by College and Gender - Percent of Students

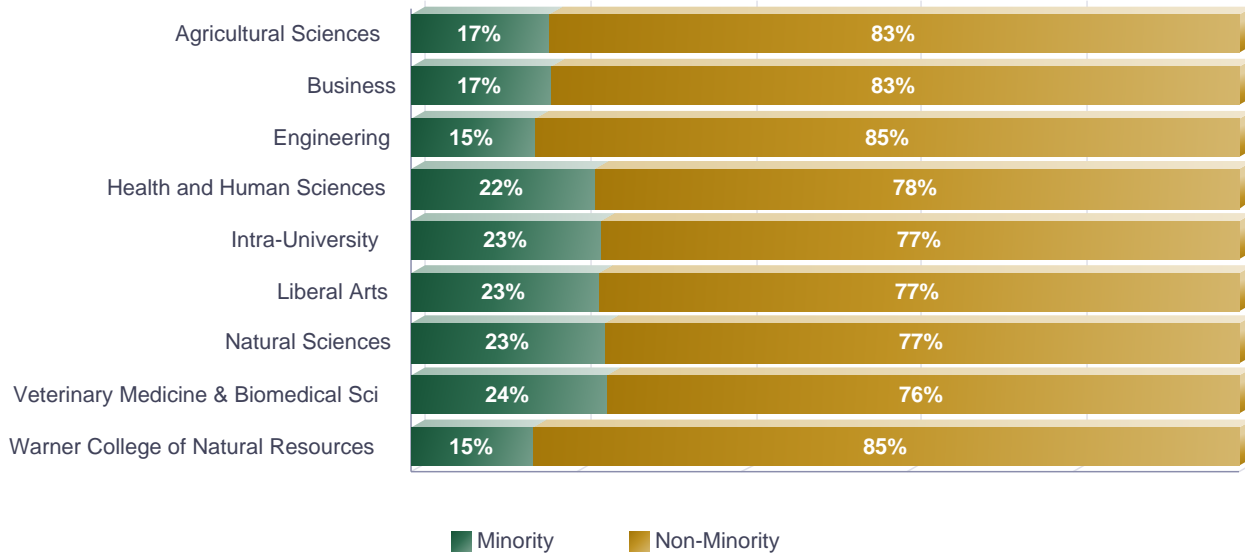


\* Data reflects RI students on campus as of the Census date of each Fall term.

Fall 2016 Undergraduate Enrollment by College and Minority Status - Number of Students by Primary Major

	Minority	Non-Minority	Total
<b>Agricultural Sciences</b>	245	1,219	<b>1,464</b>
<b>Business</b>	388	1,905	<b>2,293</b>
<b>Engineering</b>	403	2,274	<b>2,677</b>
<b>Health and Human Sciences</b>	977	3,417	<b>4,394</b>
<b>Intra-University</b>	573	1,912	<b>2,485</b>
<b>Liberal Arts</b>	930	3,154	<b>4,084</b>
<b>Natural Sciences</b>	937	3,067	<b>4,004</b>
<b>Veterinary Medicine &amp; Biomedical Sci</b>	183	591	<b>774</b>
<b>Warner College of Natural Resources</b>	237	1,356	<b>1,593</b>
<b>Total</b>	<b>4,873</b>	<b>18,895</b>	<b>23,768</b>

Fall 2016 Undergraduate Enrollment by College and Minority Status - Percent of Students

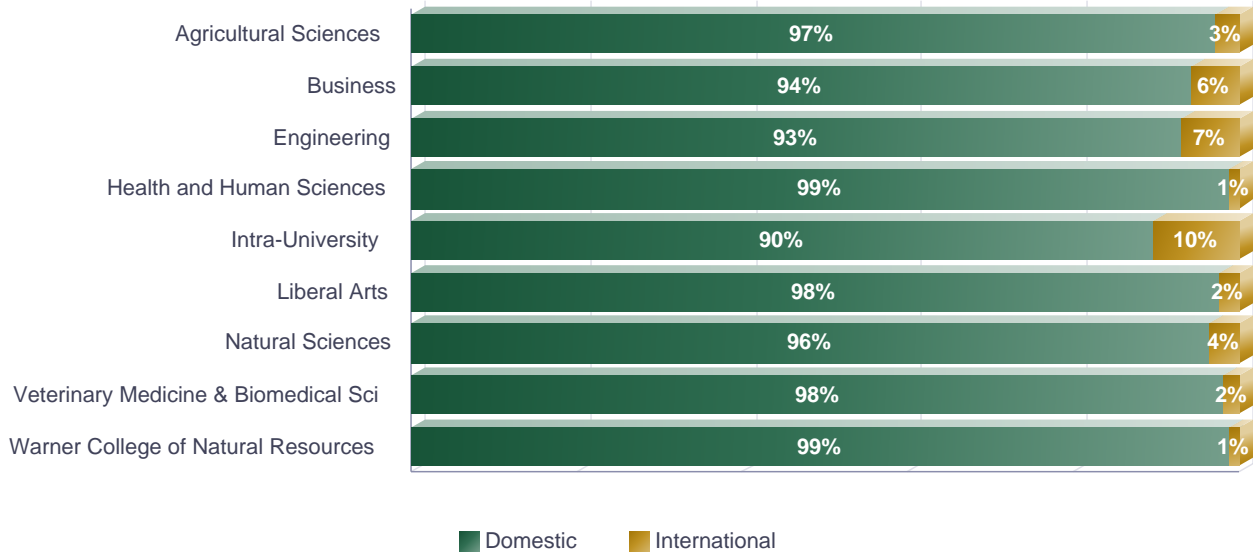


\* Data reflects RI students on campus as of the Census date of each Fall term.

**Fall 2016 Undergraduate Enrollment by College and International Status - Number of Students by Primary Major**

	Domestic	International	Total
<b>Agricultural Sciences</b>	1,422	42	<b>1,464</b>
<b>Business</b>	2,160	133	<b>2,293</b>
<b>Engineering</b>	2,487	190	<b>2,677</b>
<b>Health and Human Sciences</b>	4,340	54	<b>4,394</b>
<b>Intra-University</b>	2,229	256	<b>2,485</b>
<b>Liberal Arts</b>	3,985	99	<b>4,084</b>
<b>Natural Sciences</b>	3,859	145	<b>4,004</b>
<b>Veterinary Medicine &amp; Biomedical Sci</b>	760	14	<b>774</b>
<b>Warner College of Natural Resources</b>	1,575	18	<b>1,593</b>
<b>Total</b>	<b>22,817</b>	<b>951</b>	<b>23,768</b>

**Fall 2016 Undergraduate Enrollment by College and International Status - Percent of Students**

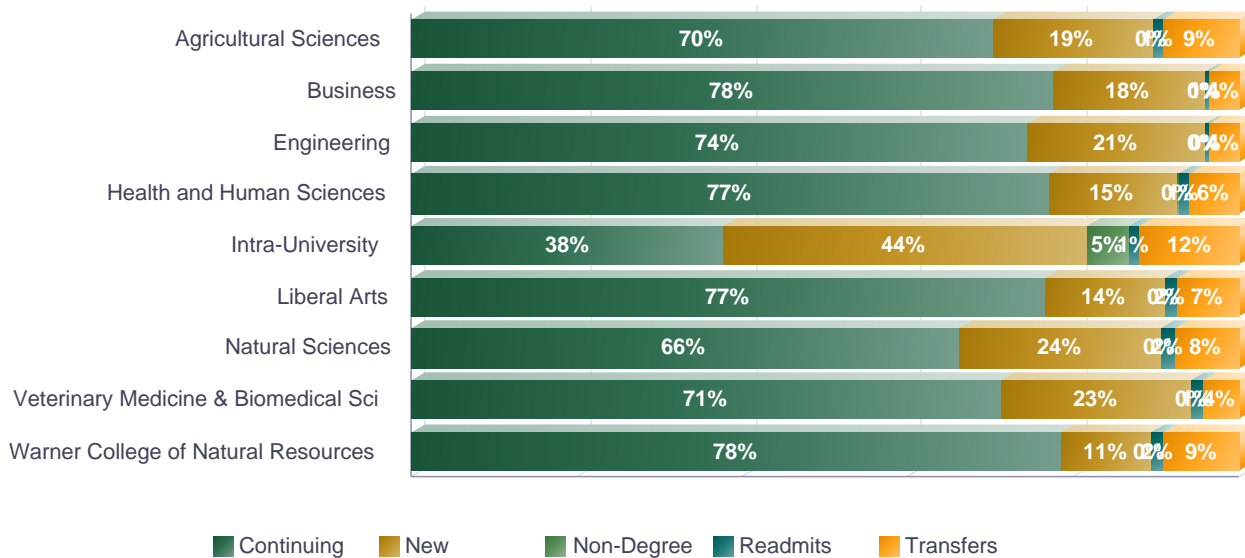


\* Data reflects RI students on campus as of the Census date of each Fall term.

Fall 2016 Undergraduate Enrollment by College and Registration Type - Number of Students by Primary Major

	Continuing	New	Non-Degree	Readmits	Transfers	Total
Agricultural Sciences	1,029	282	0	19	134	1,464
Business	1,779	418	0	14	82	2,293
Engineering	1,991	575	0	13	98	2,677
Health and Human Sciences	3,385	676	15	50	268	4,394
Intra-University	939	1,089	129	30	298	2,485
Liberal Arts	3,131	586	0	64	303	4,084
Natural Sciences	2,650	977	0	65	312	4,004
Veterinary Medicine & Biomedical Sci	551	179	0	10	34	774
Warner College of Natural Resources	1,250	174	0	24	145	1,593
<b>Total</b>	<b>16,705</b>	<b>4,956</b>	<b>144</b>	<b>289</b>	<b>1,674</b>	<b>23,768</b>

Fall 2016 Undergraduate Enrollment by College and Registration Type - Percent of Students



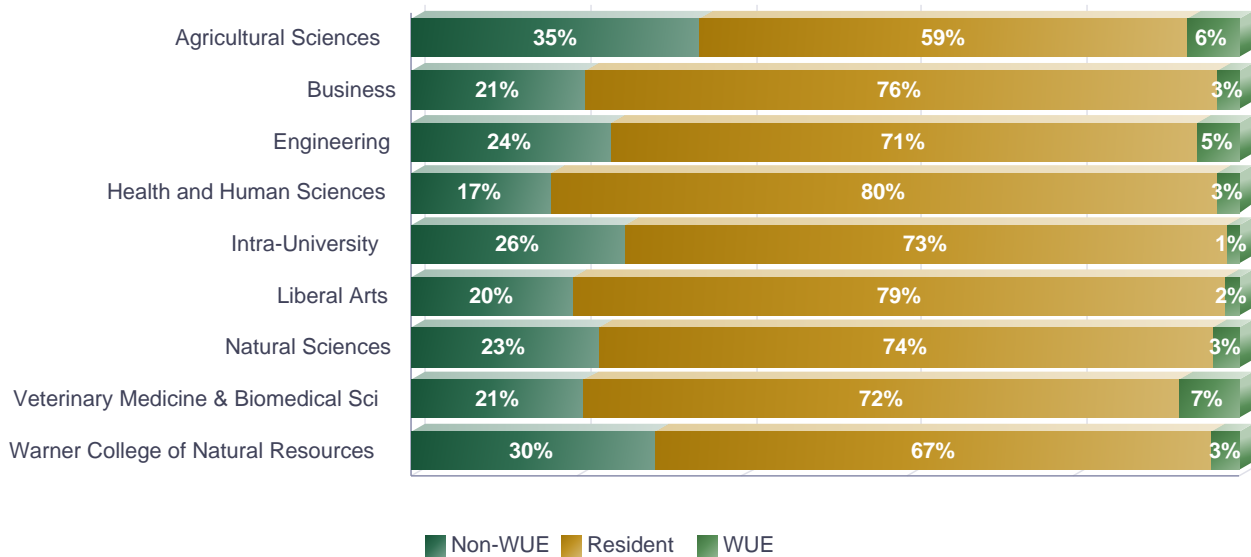
\* Data reflects RI students on campus as of the Census date of each Fall term.



Fall 2016 Undergraduate Enrollment by College and Residency - Number of Students by Primary Major

	Non-WUE	Resident	WUE	Total
Agricultural Sciences	511	861	92	1,464
Business	481	1,749	63	2,293
Engineering	646	1,896	135	2,677
Health and Human Sciences	741	3,537	116	4,394
Intra-University	643	1,806	36	2,485
Liberal Arts	804	3,211	69	4,084
Natural Sciences	912	2,965	127	4,004
Veterinary Medicine & Biomedical Sci	162	556	56	774
Warner College of Natural Resources	470	1,070	53	1,593
<b>Total</b>	<b>5,370</b>	<b>17,651</b>	<b>747</b>	<b>23,768</b>

Fall 2016 Undergraduate Enrollment by College and Residency - Percent of Students

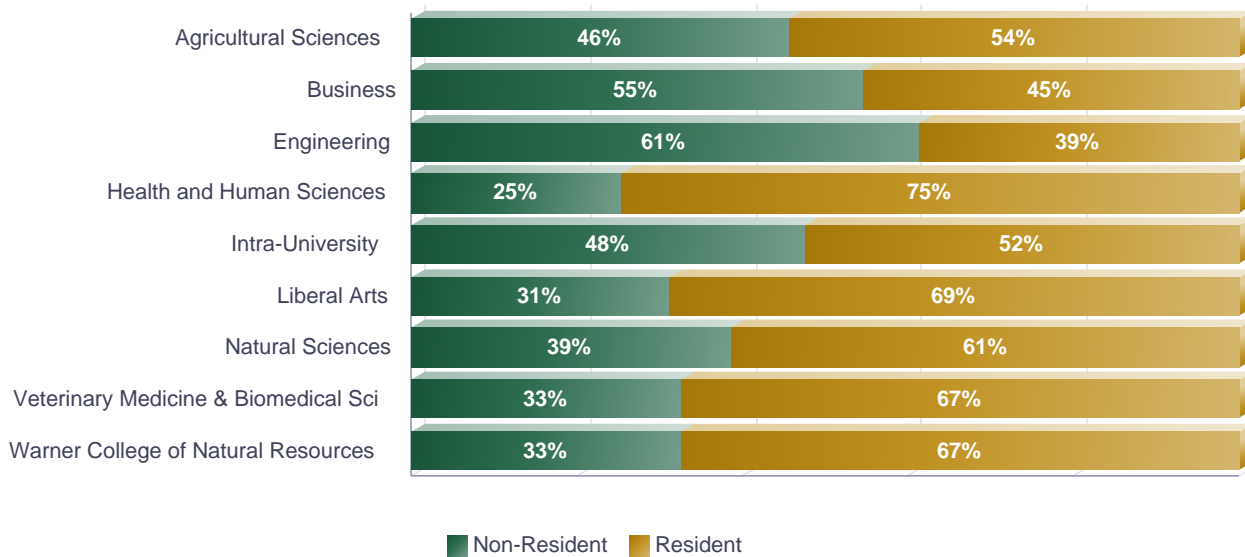


\* Data reflects RI students on campus as of the Census date of each Fall term.

Fall 2016 Graduate Enrollment by College and Residency - Number of Students by Primary Major

	Non-Resident	Resident	Total
Agricultural Sciences	103	122	225
Business	148	123	271
Engineering	470	296	766
Health and Human Sciences	151	442	593
Intra-University	131	144	275
Liberal Arts	175	385	560
Natural Sciences	253	400	653
Veterinary Medicine & Biomedical Sci	122	252	374
Warner College of Natural Resources	80	165	245
<b>Total</b>	<b>1,633</b>	<b>2,329</b>	<b>3,962</b>

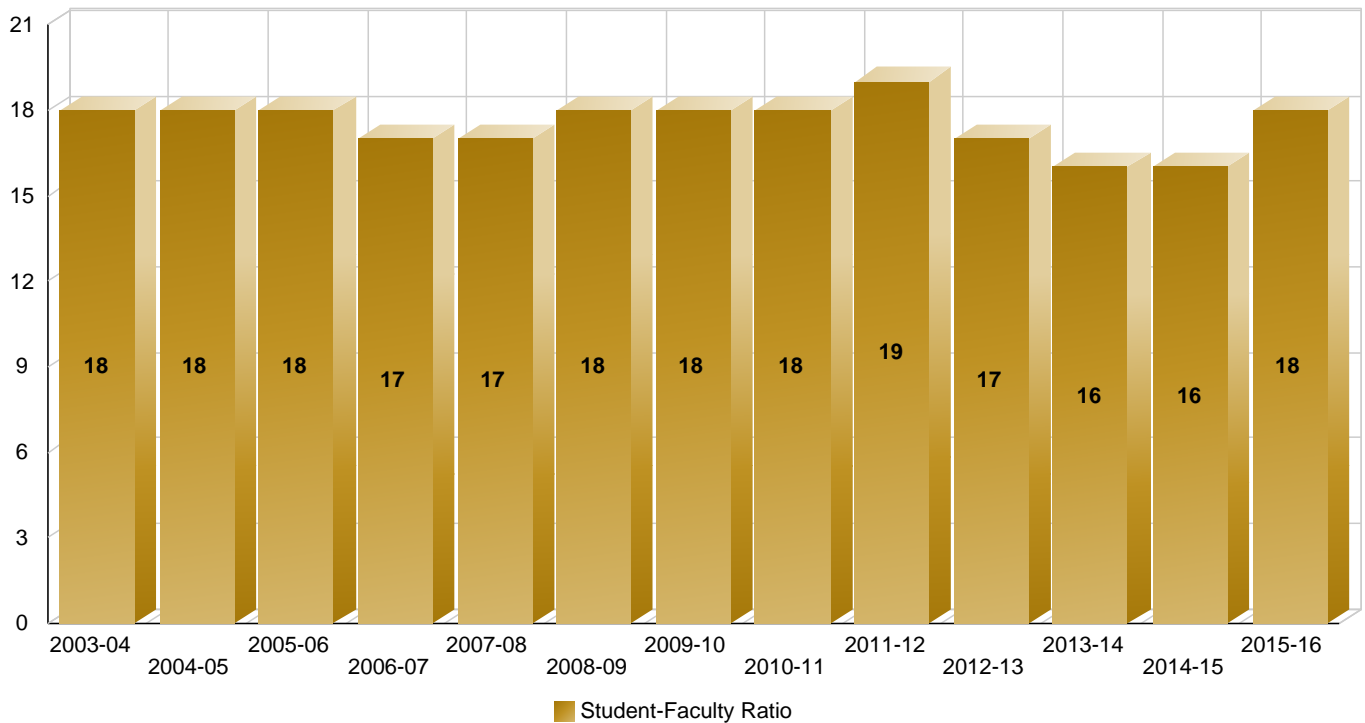
Fall 2016 Graduate Enrollment by College and Residency - Percent of Students



\* Data reflects RI students on campus as of the Census date of each Fall term.

History of University Student-Faculty Ratio

Academic Year	Student Faculty Ratio
2003-04	18
2004-05	18
2005-06	18
2006-07	17
2007-08	17
2008-09	18
2009-10	18
2010-11	18
2011-12	19
2012-13	17
2013-14	16
2014-15	16
2015-16	18





# Entering Student Profile



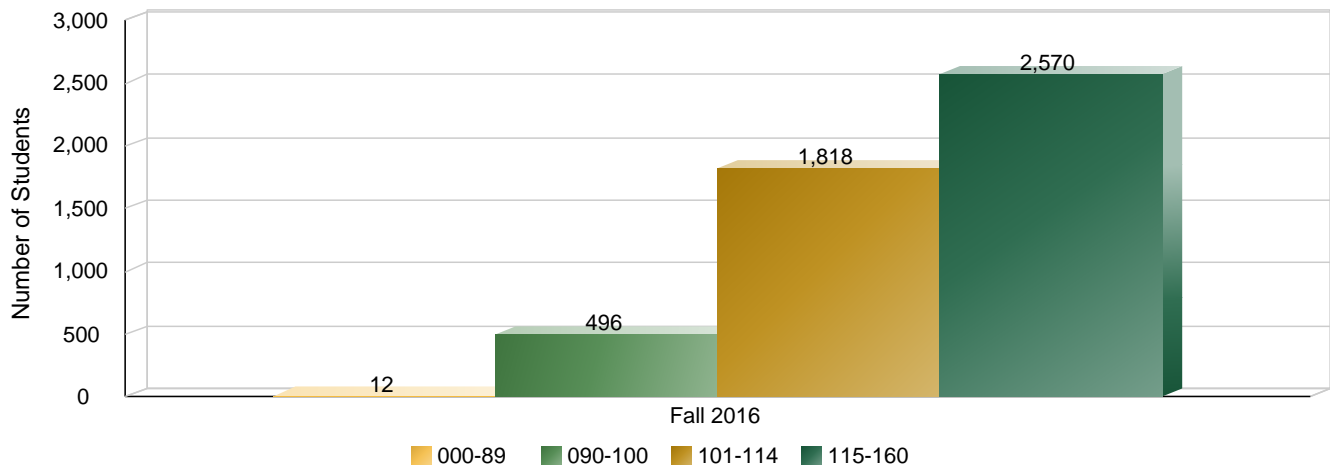
**Fall Term Freshman Profile - Number of Students By Sub-Population**

	2008	2009	2010	2011	2012	2013	2014	2015	2016
<b>Female</b>	2,439	2,364	2,492	2,500	2,522	2,427	2,390	2,510	2,771
<b>Male</b>	1,965	1,921	1,980	2,004	2,022	2,016	1,963	2,227	2,185
<b>Full-Time</b>	4,348	4,233	4,412	4,458	4,485	4,398	4,300	4,684	4,906
<b>Part-Time</b>	56	52	60	46	59	45	53	53	50
<b>Resident</b>	3,482	3,350	3,541	3,461	3,386	3,289	3,154	3,299	3,368
<b>Non-Resident</b>	922	935	931	1,043	1,158	1,154	1,199	1,438	1,588
<b>Minority</b>	600	666	738	852	872	912	896	1,020	1,219
<b>Non-Minority</b>	3,804	3,619	3,734	3,652	3,672	3,531	3,457	3,717	3,737
<b>Pell Recipient</b>	631	781	980	1,081	1,021	947	903	963	
<b>Not Pell Recipient</b>	3,773	3,504	3,492	3,423	3,523	3,496	3,450	3,774	
<b>First Generation</b>	1,064	1,054	1,038	1,160	1,187	1,068	1,034	1,225	1,108
<b>Not First-Generation</b>	3,340	3,231	3,434	3,344	3,357	3,375	3,319	3,512	3,848

**Academic Preparation**

	2008	2009	2010	2011	2012	2013	2014	2015	2016
<b>ACT Composite</b>	24.1	24.6	24.5	24.7	24.8	24.7	24.9	24.9	25.2
<b>CCHE Index</b>	113.2	114.4	114.1	115.1	114.8	115.1	115.1	114.8	115.6
<b>High School GPA</b>	3.5	3.6	3.6	3.6	3.6	3.6	3.6	3.6	3.6
<b>High School Rank</b>	71.9	72.5	73.4	73.8	72.7	72.8	71.5	69.9	70.6
<b>SAT Critical Thinking</b>	555.3	559.4	563.1	566.5	565.5	566.2	568.7	566.5	567.6
<b>SAT Math</b>	566.5	571.7	571.2	575.7	578.0	574.5	574.0	575.3	572.2

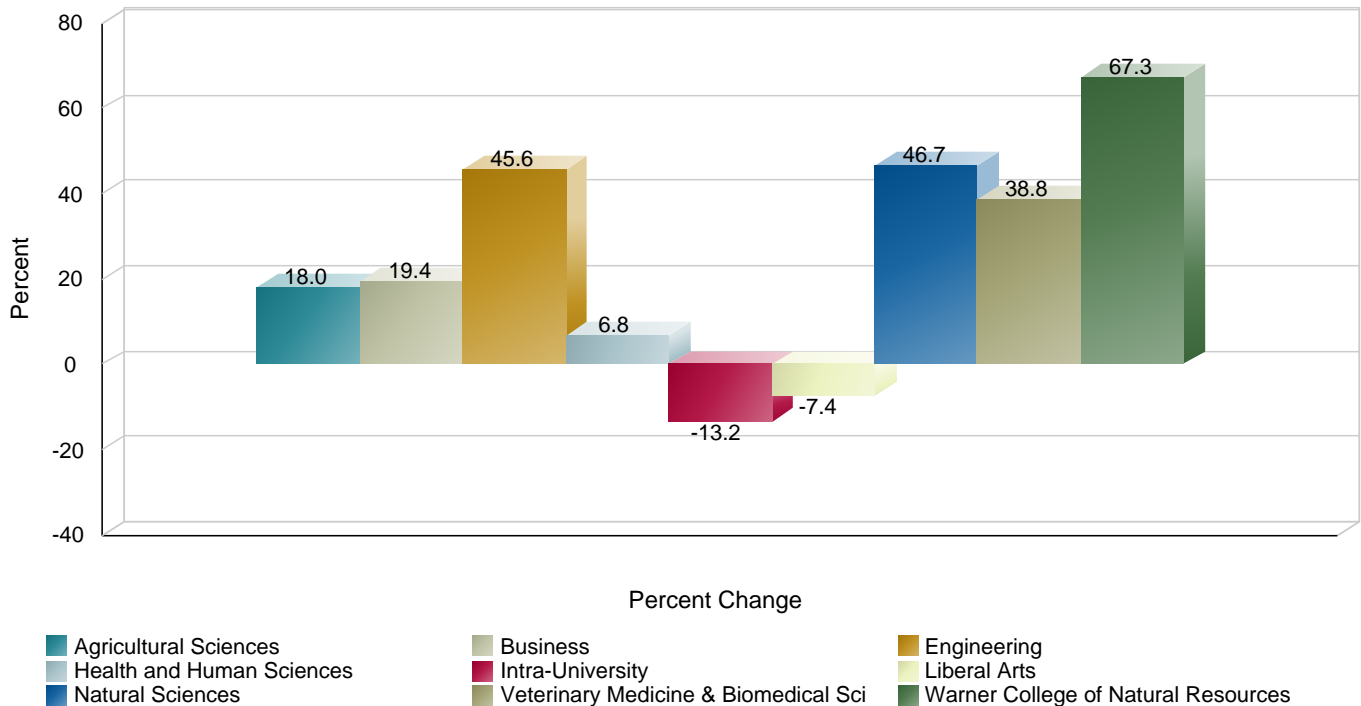
**Fall 2016 CCHE Index Distribution**



Fall Term New Freshman Enrollment History - By College

	2008	2009	2010	2011	2012	2013	2014	2015	2016
Agricultural Sciences	239	194	221	222	210	234	265	305	282
Business	350	300	337	379	311	343	324	367	418
Engineering	395	446	454	490	590	579	520	599	575
Health and Human Sciences	633	553	552	524	503	525	572	541	676
Intra-University	1,255	1,248	1,273	1,196	1,307	1,165	1,130	1,250	1,089
Liberal Arts	633	600	601	628	573	563	472	484	586
Natural Sciences	666	693	750	789	773	741	790	819	977
Veterinary Medicine & Biomedical Sci	129	140	126	126	132	121	116	184	179
Warner College of Natural Resources	104	111	158	150	145	172	164	188	174
<b>Total</b>	<b>4,404</b>	<b>4,285</b>	<b>4,472</b>	<b>4,504</b>	<b>4,544</b>	<b>4,443</b>	<b>4,353</b>	<b>4,737</b>	<b>4,956</b>

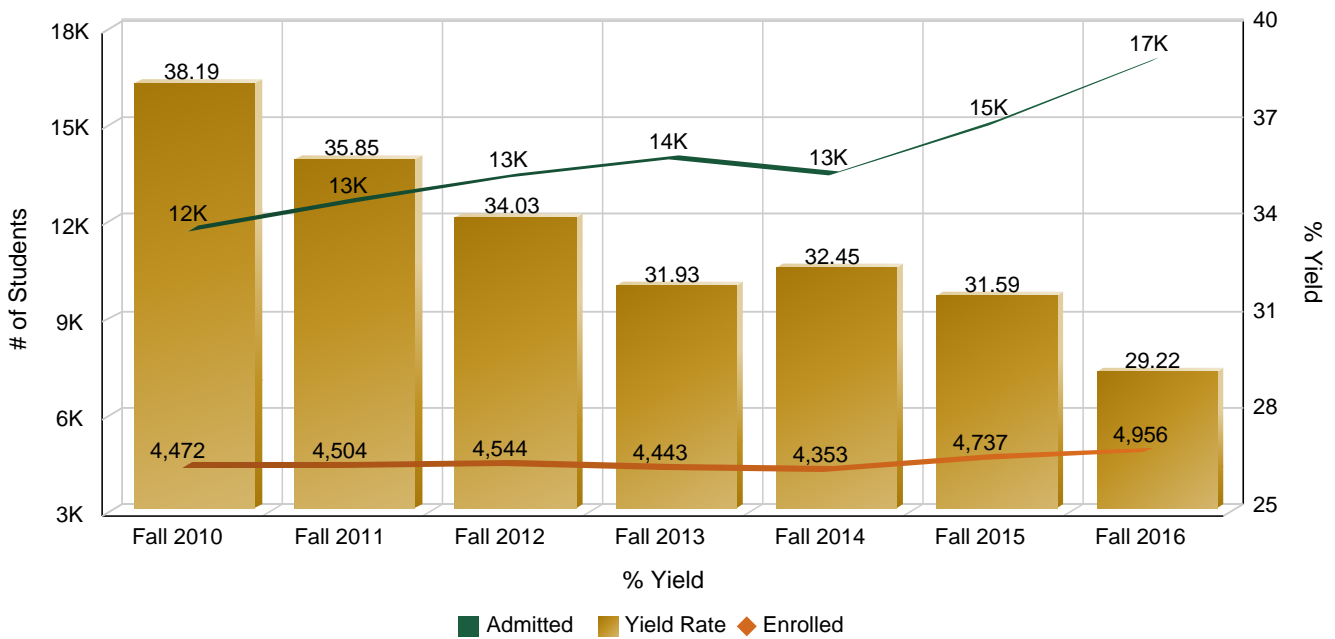
Fall 2008 to Fall 2016 Percent Change in New Freshman by College





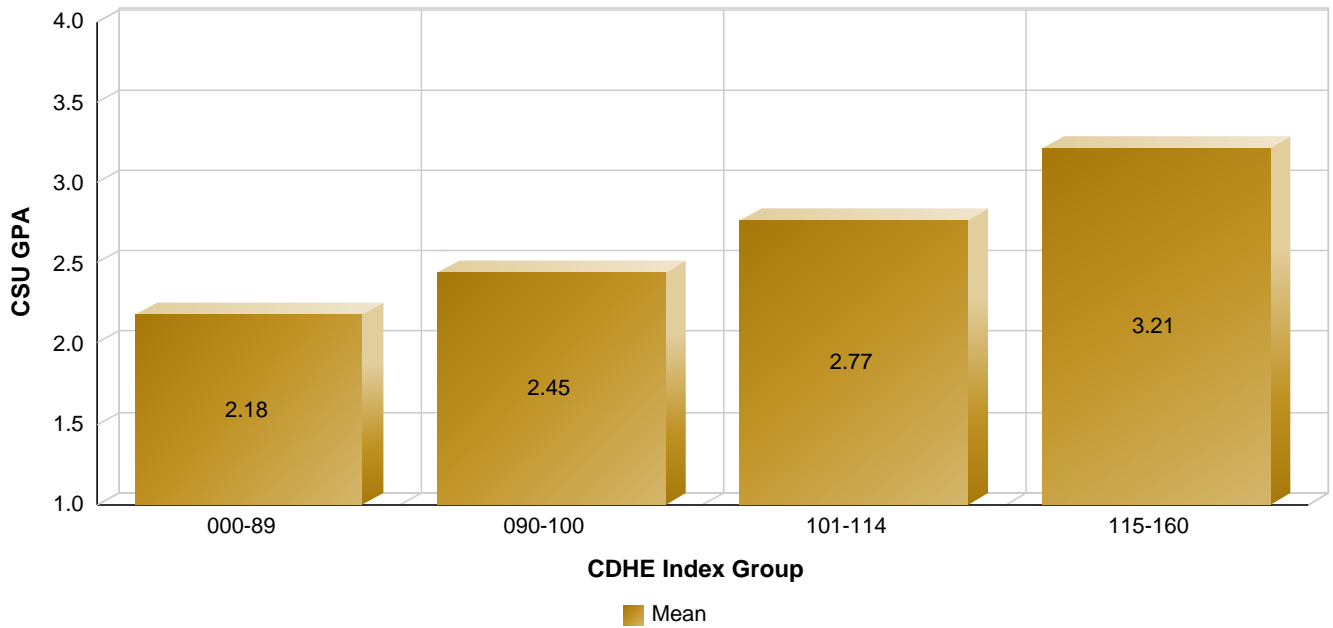
Fall Term New Freshman Yield Trends - Admitted to Enrolled

Term	Completed Applications	Admitted Students	Enrolled	Yield Rate
Fall 2010	14,496	11,709	4,472	38.2%
Fall 2011	16,562	12,565	4,504	35.8%
Fall 2012	17,886	13,351	4,544	34.0%
Fall 2013	17,975	13,916	4,443	31.9%
Fall 2014	16,521	13,416	4,353	32.4%
Fall 2015	18,556	14,997	4,737	31.6%
Fall 2016	21,759	16,963	4,956	29.2%

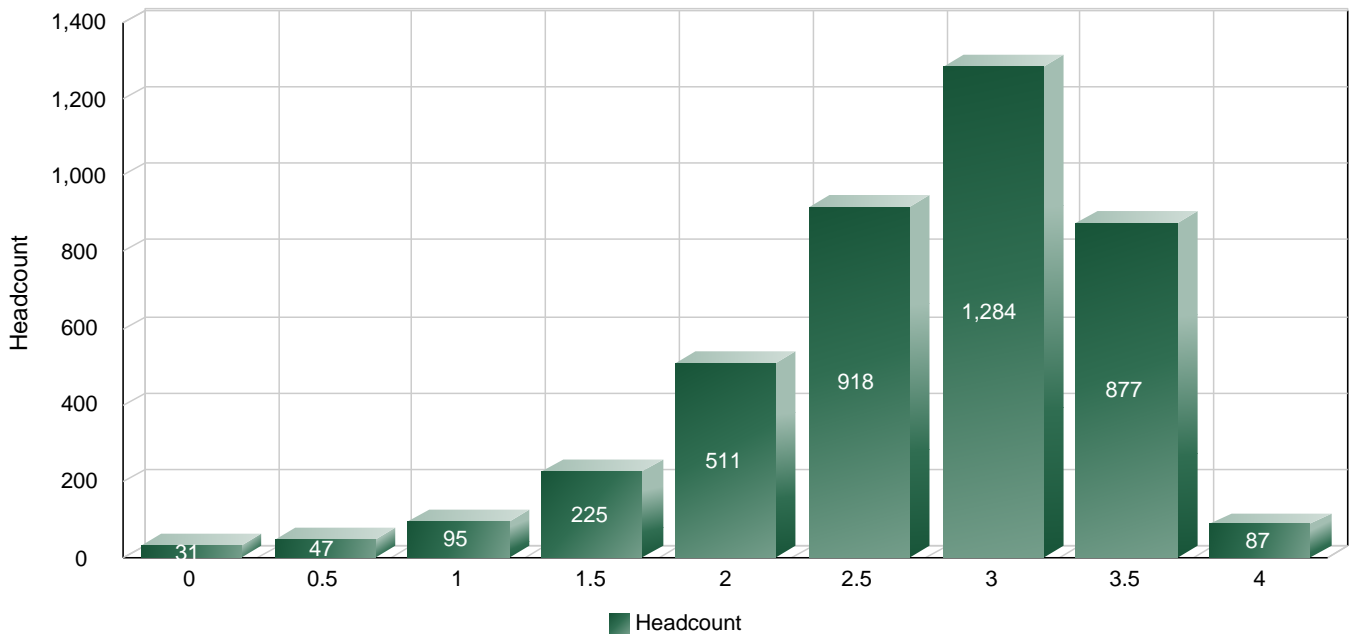


Fall Term New Freshman First-Year CSU Grade Point Average - Fall 2015 Entering Freshmen

First-Year CSU Grade Point Average and CDHE Index



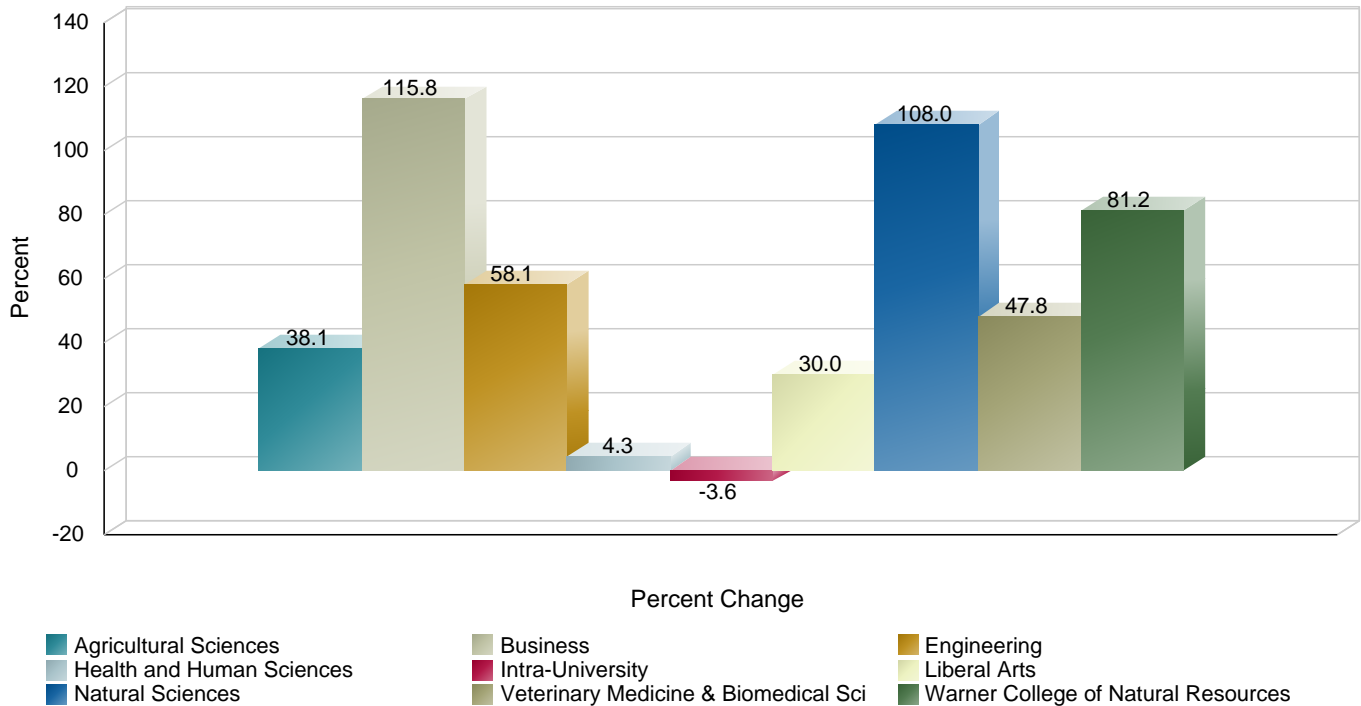
First-Year CSU GPA Distribution - Number of Students



Fall Term Transfer Undergraduate Enrollment History - By College (Primary Major)

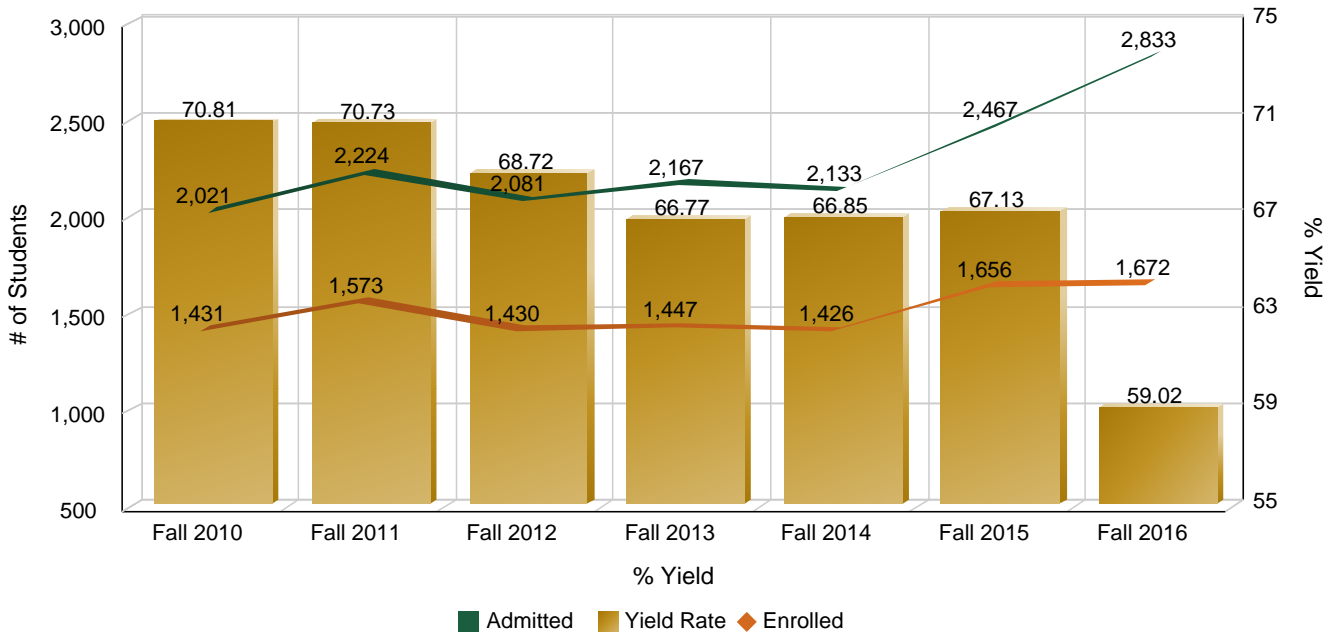
	2008	2009	2010	2011	2012	2013	2014	2015	2016
Agricultural Sciences	97	113	101	121	117	105	118	149	134
Business	38	50	62	78	58	70	72	74	82
Engineering	62	53	56	59	68	85	93	115	98
Health and Human Sciences	257	274	222	254	231	257	244	280	268
Intra-University	309	339	388	344	324	280	265	355	298
Liberal Arts	233	273	280	350	280	269	267	262	303
Natural Sciences	150	130	173	229	229	262	211	256	312
Veterinary Medicine & Biomedical Sci	23	27	26	15	26	21	36	27	34
Warner College of Natural Resources	80	94	114	123	96	98	120	139	145
<b>Total</b>	<b>1,249</b>	<b>1,353</b>	<b>1,422</b>	<b>1,573</b>	<b>1,429</b>	<b>1,447</b>	<b>1,426</b>	<b>1,657</b>	<b>1,674</b>

Fall 2008 to Fall 2016 Percent Change in Transfer Undergraduate by College



Fall Term Transfer Undergraduate Yield Trends - Admitted to Enrolled

Term	Completed Applications	Admitted Students	Enrolled	Yield Rate
Fall 2010	2,408	2,021	1,431	70.8%
Fall 2011	3,447	2,224	1,573	70.7%
Fall 2012	3,347	2,081	1,430	68.7%
Fall 2013	3,339	2,167	1,447	66.8%
Fall 2014	3,164	2,133	1,426	66.8%
Fall 2015	3,302	2,467	1,656	67.1%
Fall 2016	4,683	2,833	1,672	59.0%



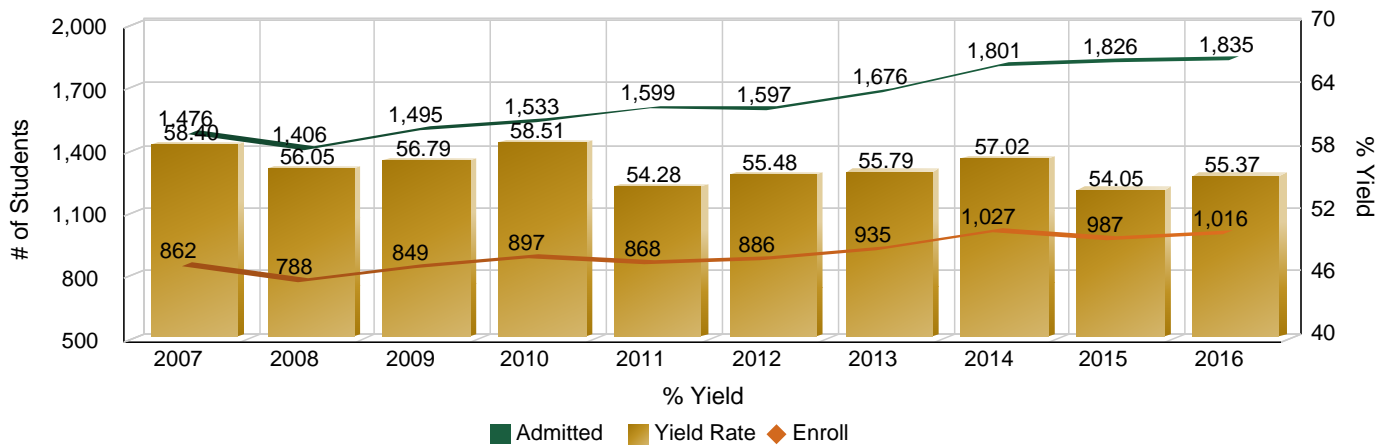
Fall Term New Graduate Profile - Number Students By Sub-Population

		2008	2009	2010	2011	2012	2013	2014	2015	2016
Female	Doctorate	95	99	92	100	99	92	79	81	83
	Masters	461	478	473	491	522	492	536	538	577
Male	Doctorate	147	106	141	129	98	121	126	106	123
	Masters	327	371	424	377	364	443	491	449	439
International	Doctorate	45	53	54	53	44	40	42	46	44
	Masters	62	68	111	106	127	176	224	238	242
Domestic	Doctorate	197	152	179	176	153	173	163	141	162
	Masters	726	781	786	762	759	759	803	749	774
Resident	Doctorate	64	58	57	53	43	62	38	44	39
	Masters	435	483	463	434	454	429	448	405	401
Non-Resident	Doctorate	178	147	176	176	154	151	167	143	167
	Masters	353	366	434	434	432	506	579	582	615
Minority	Doctorate	32	20	30	21	12	21	24	16	28
	Masters	94	87	93	97	91	97	114	115	131
Non-Minority	Doctorate	210	185	203	208	185	192	181	171	178
	Masters	694	762	804	771	795	838	913	872	885

Academic Preparation

		2008	2009	2010	2011	2012	2013	2014	2015	2016
GRE Quantitative	Doctorate	0	0	0	0	156	157	157	157	158
	Masters	0	0	0	0	153	154	155	155	155
GRE Quantitative (old scale)	Doctorate	672	670	682	689	695	666	681	680	616
	Masters	606	615	621	636	644	651	673	633	638
GRE Verbal	Doctorate	0	0	0	0	155	155	156	155	156
	Masters	0	0	0	0	155	154	154	154	154
GRE Verbal (old scale)	Doctorate	502	503	524	509	523	533	544	535	524
	Masters	497	500	496	499	522	521	521	510	525

New Masters Student Yield Trends





# Student Credit Hours and FTE





**Academic Year Student Credit Hour Production by Credit College, and Course Level  
(Including Course Credit Reassignment)**

		AY0809	AY0910	AY1011	AY1112	AY1213	AY1314	AY1415	AY1516
<b>Agricultural Sciences</b>	Graduate	3,248.3	3,182.8	3,355.3	3,500.0	3,417.2	3,072.0	3,080.9	3,049.5
	Undergraduate	26,924.2	27,160.4	27,967.9	30,400.0	30,304.0	31,302.2	30,443.2	30,619.2
	College Total	<b>30,172.5</b>	<b>30,343.2</b>	<b>31,323.2</b>	<b>33,900.0</b>	<b>33,721.2</b>	<b>34,374.2</b>	<b>33,524.1</b>	<b>33,668.7</b>
<b>Business</b>	Graduate	3,169.0	3,899.0	4,417.0	4,911.0	5,180.0	5,659.0	7,006.0	6,836.0
	Undergraduate	52,188.0	54,975.5	55,996.0	57,842.0	58,683.0	60,886.0	62,888.0	63,224.0
	College Total	<b>55,357.0</b>	<b>58,874.5</b>	<b>60,413.0</b>	<b>62,753.0</b>	<b>63,863.0</b>	<b>66,545.0</b>	<b>69,894.0</b>	<b>70,060.0</b>
<b>Engineering</b>	Graduate	7,232.3	7,323.1	8,518.2	8,348.4	8,368.3	9,148.2	9,967.7	9,674.1
	Undergraduate	19,373.3	20,688.0	23,044.0	23,547.2	24,770.5	28,583.0	31,563.9	33,924.7
	College Total	<b>26,605.6</b>	<b>28,011.1</b>	<b>31,562.2</b>	<b>31,895.6</b>	<b>33,138.8</b>	<b>37,731.2</b>	<b>41,531.6</b>	<b>43,598.8</b>
<b>Health and Human Sciences</b>	Graduate	12,483.0	12,501.2	12,314.5	10,877.2	10,584.5	10,234.0	10,092.0	9,837.5
	Undergraduate	74,926.0	73,521.5	72,047.0	68,468.0	68,672.0	67,937.0	69,393.5	69,254.0
	College Total	<b>87,409.0</b>	<b>86,022.7</b>	<b>84,361.5</b>	<b>79,345.2</b>	<b>79,256.5</b>	<b>78,171.0</b>	<b>79,485.5</b>	<b>79,091.5</b>
<b>Intra-University</b>	Graduate	417.4	313.1	409.8	340.1	403.0	297.9	270.2	352.0
	Undergraduate	6,608.0	7,483.0	8,296.5	8,108.0	9,355.5	10,883.0	12,669.5	14,709.0
	College Total	<b>7,025.4</b>	<b>7,796.1</b>	<b>8,706.3</b>	<b>8,448.1</b>	<b>9,758.5</b>	<b>11,180.9</b>	<b>12,939.7</b>	<b>15,061.0</b>
<b>Liberal Arts</b>	Graduate	7,735.1	7,774.2	8,369.5	8,199.0	7,639.0	7,500.6	7,516.7	7,149.1
	Undergraduate	201,400.1	207,610.7	215,368.0	213,960.5	213,018.5	203,761.0	194,605.0	197,721.5
	College Total	<b>209,135.2</b>	<b>215,384.9</b>	<b>223,737.5</b>	<b>222,159.5</b>	<b>220,657.5</b>	<b>211,261.6</b>	<b>202,121.7</b>	<b>204,870.6</b>
<b>Natural Sciences</b>	Graduate	10,310.7	10,463.2	10,723.1	10,708.1	11,113.3	11,060.5	11,779.9	11,117.6
	Undergraduate	139,146.3	139,733.0	144,137.0	151,379.5	154,767.5	159,427.1	156,506.6	161,471.0
	College Total	<b>149,457.0</b>	<b>150,196.2</b>	<b>154,860.1</b>	<b>162,087.6</b>	<b>165,880.8</b>	<b>170,487.6</b>	<b>168,286.5</b>	<b>172,588.6</b>
<b>Veterinary Medicine &amp; Biomedical Sci</b>	Graduate	26,914.7	28,593.8	29,183.0	29,470.3	28,186.7	28,230.3	28,231.4	29,776.5
	Undergraduate	19,433.1	20,548.9	21,119.6	22,294.3	22,162.9	21,008.7	21,653.8	20,737.6
	College Total	<b>46,347.8</b>	<b>49,142.7</b>	<b>50,302.6</b>	<b>51,764.6</b>	<b>50,349.6</b>	<b>49,239.0</b>	<b>49,885.2</b>	<b>50,514.1</b>
<b>Warner College of Natural Resources</b>	Graduate	2,463.5	2,679.5	3,105.5	2,918.0	3,233.2	3,526.5	3,292.0	3,154.0
	Undergraduate	23,090.0	23,786.5	24,418.0	25,680.5	26,693.5	25,695.0	27,898.5	29,196.0
	College Total	<b>25,553.5</b>	<b>26,466.0</b>	<b>27,523.5</b>	<b>28,598.5</b>	<b>29,926.7</b>	<b>29,221.5</b>	<b>31,190.5</b>	<b>32,350.0</b>
<b>University Total</b>		<b>637,063.0</b>	<b>652,237.4</b>	<b>672,789.9</b>	<b>680,952.1</b>	<b>686,552.6</b>	<b>688,212.0</b>	<b>688,858.8</b>	<b>701,803.3</b>

\* Academic year excludes summer terms

**History of Academic Year FTE Production by Credit College, and Course Level  
(Including Course Credit Reassignment)**

		AY0809	AY0910	AY1011	AY1112	AY1213	AY1314	AY1415	AY1516
<b>Agricultural Sciences</b>	Graduate	108.3	106.1	111.8	116.7	113.9	102.4	102.7	101.7
	Undergraduate	897.5	905.3	932.3	1,013.3	1,010.1	1,043.4	1,014.8	1,020.6
	College Total	<b>1,005.8</b>	<b>1,011.4</b>	<b>1,044.1</b>	<b>1,130.0</b>	<b>1,124.0</b>	<b>1,145.8</b>	<b>1,117.5</b>	<b>1,122.3</b>
<b>Business</b>	Graduate	105.6	130.0	147.2	163.7	172.7	188.6	233.5	227.9
	Undergraduate	1,739.6	1,832.5	1,866.5	1,928.1	1,956.1	2,029.5	2,096.3	2,107.5
	College Total	<b>1,845.2</b>	<b>1,962.5</b>	<b>2,013.7</b>	<b>2,091.8</b>	<b>2,128.8</b>	<b>2,218.1</b>	<b>2,329.8</b>	<b>2,335.4</b>
<b>Engineering</b>	Graduate	241.1	244.1	283.9	278.3	278.9	304.9	332.3	322.5
	Undergraduate	645.8	689.6	768.1	784.9	825.7	952.8	1,052.1	1,130.8
	College Total	<b>886.9</b>	<b>933.7</b>	<b>1,052.0</b>	<b>1,063.2</b>	<b>1,104.6</b>	<b>1,257.7</b>	<b>1,384.4</b>	<b>1,453.3</b>
<b>Health and Human Sciences</b>	Graduate	416.1	416.7	410.5	362.6	352.8	341.1	336.4	327.9
	Undergraduate	2,497.5	2,450.7	2,401.6	2,282.3	2,289.1	2,264.6	2,313.1	2,308.5
	College Total	<b>2,913.6</b>	<b>2,867.4</b>	<b>2,812.1</b>	<b>2,644.9</b>	<b>2,641.9</b>	<b>2,605.7</b>	<b>2,649.5</b>	<b>2,636.4</b>
<b>Intra-University</b>	Graduate	13.9	10.4	13.7	11.3	13.4	9.9	9.0	11.7
	Undergraduate	220.3	249.4	276.6	270.3	311.9	362.8	422.3	490.3
	College Total	<b>234.2</b>	<b>259.8</b>	<b>290.3</b>	<b>281.6</b>	<b>325.3</b>	<b>372.7</b>	<b>431.3</b>	<b>502.0</b>
<b>Liberal Arts</b>	Graduate	257.8	259.1	279.0	273.3	254.6	250.0	250.6	238.3
	Undergraduate	6,713.3	6,920.4	7,178.9	7,132.0	7,100.6	6,792.0	6,486.8	6,590.7
	College Total	<b>6,971.1</b>	<b>7,179.5</b>	<b>7,457.9</b>	<b>7,405.3</b>	<b>7,355.2</b>	<b>7,042.0</b>	<b>6,737.4</b>	<b>6,829.0</b>
<b>Natural Sciences</b>	Graduate	343.7	348.8	357.4	356.9	370.4	368.7	392.7	370.6
	Undergraduate	4,638.2	4,657.8	4,804.6	5,046.0	5,158.9	5,314.2	5,216.9	5,382.4
	College Total	<b>4,981.9</b>	<b>5,006.6</b>	<b>5,162.0</b>	<b>5,402.9</b>	<b>5,529.3</b>	<b>5,682.9</b>	<b>5,609.6</b>	<b>5,753.0</b>
<b>Veterinary Medicine &amp; Biomedical Sci</b>	Graduate	897.2	953.1	972.8	982.3	939.6	941.0	941.0	992.5
	Undergraduate	647.8	685.0	704.0	743.1	738.8	700.3	721.8	691.3
	College Total	<b>1,545.0</b>	<b>1,638.1</b>	<b>1,676.8</b>	<b>1,725.4</b>	<b>1,678.4</b>	<b>1,641.3</b>	<b>1,662.8</b>	<b>1,683.8</b>
<b>Warner College of Natural Resources</b>	Graduate	82.1	89.3	103.5	97.3	107.8	117.6	109.7	105.1
	Undergraduate	769.7	792.9	813.9	856.0	889.8	856.5	930.0	973.2
	College Total	<b>851.8</b>	<b>882.2</b>	<b>917.4</b>	<b>953.3</b>	<b>997.6</b>	<b>974.1</b>	<b>1,039.7</b>	<b>1,078.3</b>
<b>University Total</b>		<b>21,235.5</b>	<b>21,741.2</b>	<b>22,426.3</b>	<b>22,698.4</b>	<b>22,885.1</b>	<b>22,940.3</b>	<b>22,962.0</b>	<b>23,393.5</b>

\* Academic year excludes summer terms

**History of Total Credits Produced by College for Undergraduate Students**

	<b>AY0809</b>	<b>AY0910</b>	<b>AY1011</b>	<b>AY1112</b>	<b>AY1213</b>	<b>AY1314</b>	<b>AY1415</b>	<b>AY1516</b>
<b>Agricultural Sciences</b>	23,961	23,779	24,537	26,705	26,540	26,717	26,813	27,895
<b>Business</b>	51,634	54,232	55,678	57,548	58,798	60,878	62,848	63,255
<b>Engineering</b>	20,194	21,099	23,534	24,521	25,782	29,145	32,268	34,422
<b>Health and Human Sciences</b>	74,065	72,481	72,012	68,306	68,009	67,892	69,687	69,211
<b>Intra-University</b>	10,378	22,515	24,306	25,906	26,299	26,946	27,605	28,634
<b>Liberal Arts</b>	198,488	205,738	212,772	212,206	211,245	202,449	194,558	196,682
<b>Natural Sciences</b>	141,018	131,472	134,510	139,848	143,922	147,303	143,824	148,757
<b>Veterinary Medicine &amp; Biomedical Sci</b>	17,356	18,455	19,105	20,020	19,752	19,100	19,707	19,569
<b>Warner College of Natural Resources</b>	23,766	22,700	23,477	24,532	25,999	26,056	27,163	28,745
<b>University Total</b>	<b>560,860</b>	<b>572,471</b>	<b>589,931</b>	<b>599,592</b>	<b>606,346</b>	<b>606,486</b>	<b>604,473</b>	<b>617,170</b>

**History of Undergraduate Service Load - Percent of Total**

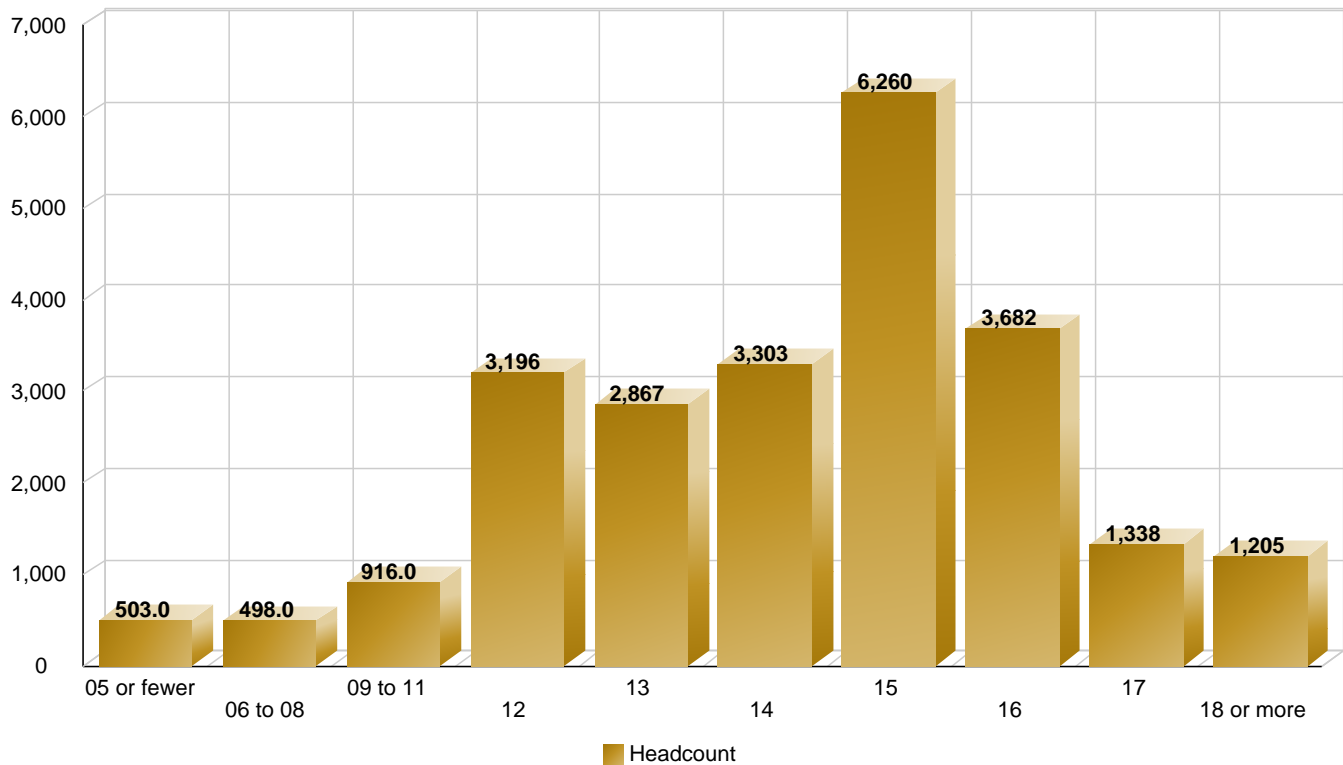
	<b>AY0809</b>	<b>AY0910</b>	<b>AY1011</b>	<b>AY1112</b>	<b>AY1213</b>	<b>AY1314</b>	<b>AY1415</b>	<b>AY1516</b>
<b>Agricultural Sciences</b>	29%	31%	31%	32%	33%	33%	34%	33%
<b>Business</b>	37%	38%	37%	37%	36%	35%	35%	34%
<b>Engineering</b>	6%	4%	4%	4%	3%	3%	5%	3%
<b>Health and Human Sciences</b>	25%	23%	23%	22%	23%	21%	19%	19%
<b>Intra-University</b>	88%	85%	86%	89%	88%	88%	87%	88%
<b>Liberal Arts</b>	50%	51%	52%	51%	53%	54%	54%	56%
<b>Natural Sciences</b>	65%	65%	65%	64%	63%	62%	61%	62%
<b>Veterinary Medicine &amp; Biomedical Sci</b>	63%	65%	65%	66%	66%	67%	66%	65%
<b>Warner College of Natural Resources</b>	52%	48%	43%	42%	40%	37%	38%	38%
<b>University Total</b>	<b>48%</b>	<b>48%</b>	<b>49%</b>	<b>48%</b>	<b>49%</b>	<b>48%</b>	<b>48%</b>	<b>48%</b>

\* Academic year excludes summer terms

Fall 2016 Undergraduate Students by College and Credit Load

	05 or fewer	06 to 08	09 to 11	12	13	14	15	16	17	18 or more
Agricultural Sciences	35	40	49	141	181	280	272	253	102	111
Business	24	26	59	362	217	148	834	412	69	142
Engineering	48	44	111	261	383	442	586	395	270	137
Health and Human Sciences	85	101	165	569	565	596	1,163	706	245	199
Intra-University	57	48	79	419	302	369	763	326	75	47
Liberal Arts	107	86	174	754	331	302	1,399	502	166	263
Natural Sciences	100	93	191	408	545	766	809	661	251	180
Veterinary Medicine & Biomedical Sci	12	14	20	63	90	142	143	161	77	52
Warner College of Natural Resources	35	46	68	219	253	258	291	266	83	74
<b>University Total</b>	<b>503</b>	<b>498</b>	<b>916</b>	<b>3,196</b>	<b>2,867</b>	<b>3,303</b>	<b>6,260</b>	<b>3,682</b>	<b>1,338</b>	<b>1,205</b>

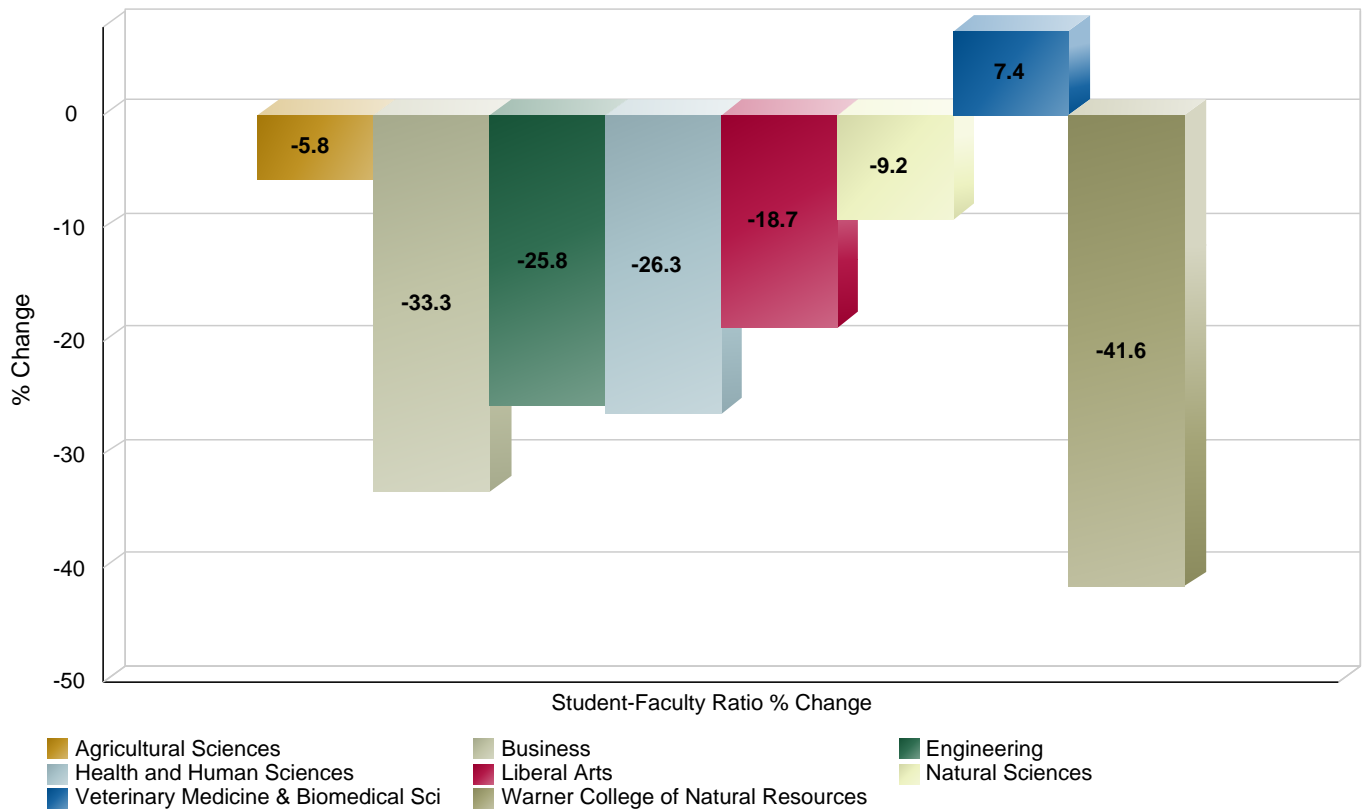
Fall 2016 Undergraduate Students by Credit Load



History of Undergraduate Credit Hours Taught by Tenure-Track Faculty

	2009	2010	2011	2012	2013	2014	2015	2016
Agricultural Sciences	79%	76%	82%	70%	77%	70%	70%	74%
Business	47%	52%	50%	46%	47%	41%	38%	32%
Engineering	79%	82%	79%	65%	72%	69%	63%	59%
Health and Human Sciences	47%	49%	44%	33%	34%	36%	33%	34%
Intra-University	0%	0%	0%	0%	0%	7%	9%	6%
Liberal Arts	36%	38%	34%	26%	28%	24%	28%	29%
Natural Sciences	37%	46%	42%	38%	38%	35%	30%	33%
Veterinary Medicine & Biomedical Sci	69%	69%	68%	65%	66%	71%	72%	74%
Warner College of Natural Resources	71%	71%	74%	52%	61%	51%	46%	42%
University Summary	44%	48%	45%	38%	40%	37%	36%	36%

Undergraduate Credit Hours Taught By Tenure-Track Faculty  
Percent Change between Academic Year 2009 and 2016





# Degrees Awarded





## Degrees Awarded History - By Sub-Population

	2008-09	2009-10	2010-11	2011-12	2012-13	2013-14	2014-15	2015-16
<b>Female</b>	3,158	3,298	3,298	3,514	3,610	3,647	3,795	3,883
<b>Male</b>	2,653	2,790	2,878	3,101	3,228	3,290	3,386	3,293
<b>Non-First Generation</b>	4,421	4,737	4,806	5,304	5,345	5,567	5,738	5,732
<b>First Generation</b>	1,390	1,351	1,370	1,311	1,493	1,370	1,443	1,444
<b>Non-Pell Recipient</b>	4,621	4,904	4,809	5,137	5,302	5,237	5,454	5,427
<b>Pell Recipient</b>	1,190	1,184	1,367	1,478	1,536	1,700	1,727	1,749
<b>Non-STEM Major</b>	3,919	4,054	4,161	4,429	4,511	4,462	4,566	4,482
<b>STEM Major</b>	1,892	2,034	2,015	2,186	2,327	2,475	2,615	2,694
<b>Non-Veteran</b>	5,677	5,919	6,010	6,430	6,619	6,626	6,822	6,856
<b>Veteran</b>	134	169	166	185	219	311	359	320
<b>Minority</b>	661	735	780	840	897	917	1,069	1,121
<b>Non-Minority</b>	5,150	5,353	5,396	5,775	5,941	6,020	6,112	6,055
<b>Non-Minority</b>								
International	177	199	243	272	316	367	435	511
No Response	396	372	280	366	406	397	361	338
White	4,577	4,782	4,873	5,137	5,219	5,256	5,316	5,206
<b>Minority</b>								
Asian	110	132	142	136	139	134	181	153
Black	69	86	86	95	100	124	139	128
Hawaiian/Pac. Islander	14	8	11	8	15	5	10	8
Hispanic/Latino	336	376	365	429	463	441	508	600
Multi-Racial	104	109	151	146	152	189	209	205
Native American	28	24	25	26	28	24	22	27
<b>Total</b>	<b>5,811</b>	<b>6,088</b>	<b>6,176</b>	<b>6,615</b>	<b>6,838</b>	<b>6,937</b>	<b>7,181</b>	<b>7,176</b>

**Degrees Awarded History - By Sub-Population  
BACHELORS**

		2008-09	2009-10	2010-11	2011-12	2012-13	2013-14	2014-15	2015-16
<b>Female</b>		2,303	2,347	2,412	2,506	2,604	2,627	2,717	2,758
<b>Male</b>		1,931	1,987	2,024	2,170	2,275	2,335	2,332	2,237
<b>Non-First Generation</b>		2,978	3,143	3,255	3,524	3,644	3,798	3,787	3,723
<b>First Generation</b>		1,256	1,191	1,181	1,152	1,235	1,164	1,262	1,272
<b>Non-Pell Recipient</b>		3,044	3,150	3,069	3,198	3,343	3,262	3,322	3,246
<b>Pell Recipient</b>		1,190	1,184	1,367	1,478	1,536	1,700	1,727	1,749
<b>Non-STEM Major</b>		2,977	2,964	3,114	3,210	3,364	3,337	3,388	3,326
<b>STEM Major</b>		1,257	1,370	1,322	1,466	1,515	1,625	1,661	1,669
<b>Non-Veteran</b>		4,147	4,252	4,354	4,588	4,774	4,776	4,825	4,811
<b>Veteran</b>		87	82	82	88	105	186	224	184
<b>Minority</b>		502	530	570	575	638	662	790	824
<b>Non-Minority</b>		3,732	3,804	3,866	4,101	4,241	4,300	4,259	4,171
<b>Non-Minority</b>	International	33	43	90	119	133	139	176	181
	No Response	239	202	159	217	238	242	235	235
	White	3,460	3,559	3,617	3,765	3,870	3,919	3,848	3,755
<b>Minority</b>	Asian	69	77	91	74	74	76	100	86
	Black	49	61	67	64	73	93	102	88
	Hawaiian/Pac. Islander	12	5	10	6	11	4	8	8
	Hispanic/Latino	269	287	275	294	338	334	405	468
	Multi-Racial	83	84	114	121	118	142	159	156
	Native American	20	16	13	16	24	13	16	18
<b>Total</b>		<b>4,234</b>	<b>4,334</b>	<b>4,436</b>	<b>4,676</b>	<b>4,879</b>	<b>4,962</b>	<b>5,049</b>	<b>4,995</b>

**Degrees Awarded History - By Sub-Population  
MASTERS**

	2008-09	2009-10	2010-11	2011-12	2012-13	2013-14	2014-15	2015-16
<b>Female</b>	646	758	699	801	779	807	867	893
<b>Male</b>	579	662	700	776	808	799	888	881
<b>Non-First Generation</b>	1,115	1,291	1,259	1,447	1,462	1,484	1,630	1,655
<b>First Generation</b>	110	129	140	130	125	122	125	119
<b>Non-Pell Recipient</b>	1,225	1,420	1,399	1,577	1,587	1,606	1,755	1,774
<b>Non-STEM Major</b>	856	1,021	982	1,142	1,062	1,053	1,098	1,064
<b>STEM Major</b>	369	399	417	435	525	553	657	710
<b>Non-Veteran</b>	1,184	1,340	1,323	1,484	1,483	1,489	1,629	1,646
<b>Veteran</b>	41	80	76	93	104	117	126	128
<b>Minority</b>	123	172	166	213	214	203	226	240
<b>Non-Minority</b>	1,102	1,248	1,233	1,364	1,373	1,403	1,529	1,534
<b>Non-Minority</b>								
International	92	107	106	113	139	177	219	272
No Response	118	123	102	127	138	123	100	81
White	892	1,018	1,025	1,124	1,096	1,103	1,210	1,181
<b>Minority</b>								
Asian	30	43	40	51	56	49	66	51
Black	15	22	16	28	23	28	30	34
Hawaiian/Pac. Islander	2	3	1	2	3	0	1	0
Hispanic/Latino	50	74	75	109	104	83	83	107
Multi-Racial	18	22	24	15	26	35	42	41
Native American	8	8	10	8	2	8	4	7
<b>Total</b>	<b>1,225</b>	<b>1,420</b>	<b>1,399</b>	<b>1,577</b>	<b>1,587</b>	<b>1,606</b>	<b>1,755</b>	<b>1,774</b>

**Degrees Awarded History - By Sub-Population  
DOCTORATE**

	2008-09	2009-10	2010-11	2011-12	2012-13	2013-14	2014-15	2015-16
<b>Female</b>	108	96	88	111	113	94	117	118
<b>Male</b>	119	107	116	124	119	136	134	131
<b>First Generation</b>	4	5	8	1	11	9	7	11
<b>Non-First Generation</b>	223	198	196	234	221	221	244	238
<b>Non-Pell Recipient</b>	227	203	204	235	232	230	251	249
<b>Non-STEM Major</b>	86	69	65	77	85	72	80	69
<b>STEM Major</b>	141	134	139	158	147	158	171	180
<b>Non-Veteran</b>	224	202	199	233	227	226	245	244
<b>Veteran</b>	3	1	5	2	5	4	6	5
<b>Minority</b>	24	18	19	29	24	27	34	36
<b>Non-Minority</b>	203	185	185	206	208	203	217	213
<b>Non-Minority</b>								
International	52	49	45	40	44	50	40	54
No Response	18	13	8	14	21	15	17	6
White	133	123	132	152	143	138	160	153
<b>Minority</b>								
Asian	5	6	3	6	5	5	9	7
Black	5	2	3	3	3	3	7	6
Hawaiian/Pac. Islander	0	0	0	0	1	1	0	0
Hispanic/Latino	12	8	5	13	9	9	13	17
Multi-Racial	2	2	6	6	5	6	3	5
Native American	0	0	2	1	1	3	2	1
<b>Total</b>	<b>227</b>	<b>203</b>	<b>204</b>	<b>235</b>	<b>232</b>	<b>230</b>	<b>251</b>	<b>249</b>

**Degrees Awarded History - By Sub-Population  
D.V.M.**

	2008-09	2009-10	2010-11	2011-12	2012-13	2013-14	2014-15	2015-16
<b>Female</b>	101	97	99	96	114	119	94	99
<b>Male</b>	24	34	38	31	26	20	32	31
<b>Non-First Generation</b>	105	105	96	99	18	64	77	90
<b>First Generation</b>	20	26	41	28	122	75	49	40
<b>Non-Pell Recipient</b>	125	131	137	127	140	139	126	130
<b>STEM Major</b>	125	131	137	127	140	139	126	130
<b>Non-Veteran</b>	122	125	134	125	135	135	123	129
<b>Veteran</b>	3	6	3	2	5	4	3	1
<b>Non-Minority</b>	113	116	112	104	119	114	107	112
<b>Minority</b>	12	15	25	23	21	25	19	18
<b>Non-Minority</b>								
International	0	0	2	0	0	1	0	1
No Response	21	34	11	8	9	17	9	14
White	92	82	99	96	110	96	98	97
<b>Minority</b>								
Asian	6	6	8	5	4	4	6	8
Black	0	1	0	0	1	0	0	0
Hawaiian/Pac. Islander	0	0	0	0	0	0	1	0
Hispanic/Latino	5	7	10	13	12	15	7	6
Multi-Racial	1	1	7	4	3	6	5	3
Native American	0	0	0	1	1	0	0	1
<b>Total</b>	<b>125</b>	<b>131</b>	<b>137</b>	<b>127</b>	<b>140</b>	<b>139</b>	<b>126</b>	<b>130</b>

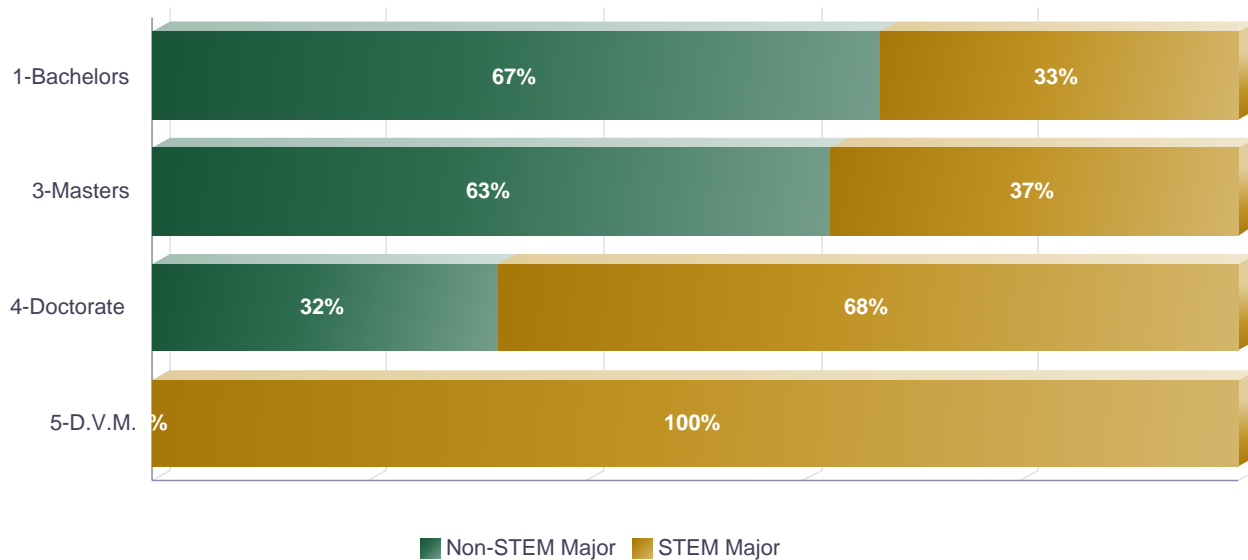
## Degrees Awarded History By College and Degree Category

	2008-09	2009-10	2010-11	2011-12	2012-13	2013-14	2014-15	2015-16
<b>Agricultural Sciences</b>	<b>355</b>	<b>324</b>	<b>346</b>	<b>360</b>	<b>404</b>	<b>404</b>	<b>410</b>	<b>400</b>
1-Bachelors	282	262	259	272	298	305	314	301
3-Masters	60	41	75	71	84	87	81	79
4-Doctorate	13	21	12	17	22	12	15	20
<b>Business</b>	<b>822</b>	<b>928</b>	<b>1,002</b>	<b>1,042</b>	<b>1,100</b>	<b>1,141</b>	<b>1,230</b>	<b>1,231</b>
1-Bachelors	528	525	602	577	638	663	679	676
2-Graduate Certificate	0	0	0	0	0	0	0	15
3-Masters	294	403	400	465	462	478	551	540
<b>Engineering</b>	<b>357</b>	<b>356</b>	<b>382</b>	<b>452</b>	<b>486</b>	<b>518</b>	<b>611</b>	<b>647</b>
1-Bachelors	225	224	238	306	295	334	374	394
3-Masters	92	94	104	106	149	151	189	203
4-Doctorate	40	38	40	40	42	33	48	50
<b>Health and Human Sciences</b>	<b>1,387</b>	<b>1,465</b>	<b>1,431</b>	<b>1,523</b>	<b>1,433</b>	<b>1,336</b>	<b>1,425</b>	<b>1,410</b>
1-Bachelors	970	1,031	1,050	1,081	1,035	1,016	1,034	1,023
2-Graduate Certificate	0	0	0	0	0	0	0	8
3-Masters	359	396	346	399	352	276	342	338
4-Doctorate	58	38	35	43	46	44	49	41
<b>Intra-University</b>	<b>31</b>	<b>25</b>	<b>29</b>	<b>41</b>	<b>36</b>	<b>38</b>	<b>63</b>	<b>60</b>
3-Masters	14	11	17	21	17	23	27	28
4-Doctorate	17	14	12	20	19	15	36	32
<b>Liberal Arts</b>	<b>1,449</b>	<b>1,578</b>	<b>1,529</b>	<b>1,664</b>	<b>1,678</b>	<b>1,646</b>	<b>1,601</b>	<b>1,556</b>
1-Bachelors	1,286	1,359	1,328	1,426	1,473	1,429	1,410	1,358
3-Masters	155	210	191	227	194	207	180	191
4-Doctorate	8	9	10	11	11	10	11	7
<b>Natural Sciences</b>	<b>748</b>	<b>727</b>	<b>760</b>	<b>780</b>	<b>844</b>	<b>933</b>	<b>967</b>	<b>922</b>
1-Bachelors	588	557	588	599	647	723	754	713
3-Masters	107	117	107	115	136	131	146	146
4-Doctorate	53	53	65	66	61	79	67	63
<b>Veterinary Medicine &amp; Biomedical Sci</b>	<b>388</b>	<b>381</b>	<b>412</b>	<b>415</b>	<b>448</b>	<b>465</b>	<b>437</b>	<b>455</b>
1-Bachelors	144	130	142	147	160	159	150	153
3-Masters	92	100	111	110	125	144	142	152
4-Doctorate	27	20	22	31	23	23	19	20
5-D.V.M.	125	131	137	127	140	139	126	130
<b>Warner College of Natural Resources</b>	<b>274</b>	<b>304</b>	<b>285</b>	<b>338</b>	<b>409</b>	<b>456</b>	<b>437</b>	<b>495</b>
1-Bachelors	211	246	229	268	333	333	334	377
2-Graduate Certificate	0	0	0	0	0	0	0	5
3-Masters	52	48	48	63	68	109	97	97
4-Doctorate	11	10	8	7	8	14	6	16
<b>Total</b>	<b>5,811</b>	<b>6,088</b>	<b>6,176</b>	<b>6,615</b>	<b>6,838</b>	<b>6,937</b>	<b>7,181</b>	<b>7,176</b>

Degrees Awarded History by Degree Category and STEM Status

	2008-09	2009-10	2010-11	2011-12	2012-13	2013-14	2014-15	2015-16
<b>1-Bachelors</b>	<b>4,234</b>	<b>4,334</b>	<b>4,436</b>	<b>4,676</b>	<b>4,879</b>	<b>4,962</b>	<b>5,049</b>	<b>4,995</b>
Non-STEM Major	2,977	2,964	3,114	3,210	3,364	3,337	3,388	3,326
STEM Major	1,257	1,370	1,322	1,466	1,515	1,625	1,661	1,669
<b>2-Graduate Certificate</b>	<b>0</b>	<b>0</b>	<b>0</b>	<b>0</b>	<b>0</b>	<b>0</b>	<b>0</b>	<b>28</b>
Non-STEM Major	0	0	0	0	0	0	0	23
STEM Major	0	0	0	0	0	0	0	5
<b>3-Masters</b>	<b>1,225</b>	<b>1,420</b>	<b>1,399</b>	<b>1,577</b>	<b>1,587</b>	<b>1,606</b>	<b>1,755</b>	<b>1,774</b>
Non-STEM Major	856	1,021	982	1,142	1,062	1,053	1,098	1,064
STEM Major	369	399	417	435	525	553	657	710
<b>4-Doctorate</b>	<b>227</b>	<b>203</b>	<b>204</b>	<b>235</b>	<b>232</b>	<b>230</b>	<b>251</b>	<b>249</b>
Non-STEM Major	86	69	65	77	85	72	80	69
STEM Major	141	134	139	158	147	158	171	180
<b>5-D.V.M.</b>	<b>125</b>	<b>131</b>	<b>137</b>	<b>127</b>	<b>140</b>	<b>139</b>	<b>126</b>	<b>130</b>
STEM Major	125	131	137	127	140	139	126	130
<b>Total</b>	<b>5,811</b>	<b>6,088</b>	<b>6,176</b>	<b>6,615</b>	<b>6,838</b>	<b>6,937</b>	<b>7,181</b>	<b>7,176</b>

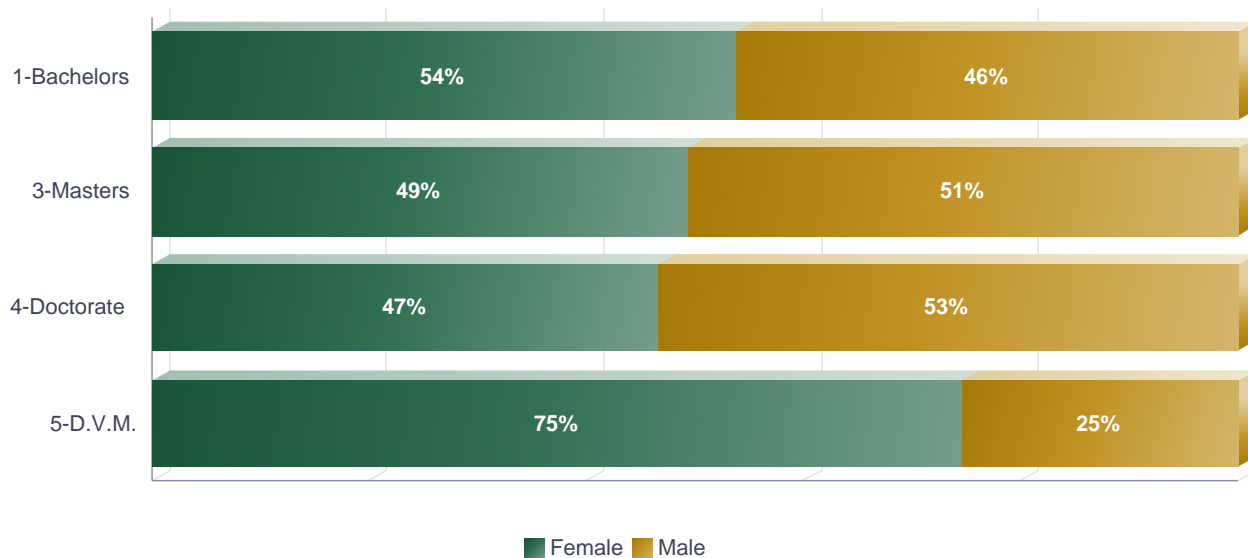
Degrees Awarded by Degree Category and STEM Status - Percent of Students



Degrees Awarded History by Degree Category and Gender

	2008-09	2009-10	2010-11	2011-12	2012-13	2013-14	2014-15	2015-16
<b>1-Bachelors</b>	<b>4,234</b>	<b>4,334</b>	<b>4,436</b>	<b>4,676</b>	<b>4,879</b>	<b>4,962</b>	<b>5,049</b>	<b>4,995</b>
<b>Female</b>	2,303	2,347	2,412	2,506	2,604	2,627	2,717	2,758
<b>Male</b>	1,931	1,987	2,024	2,170	2,275	2,335	2,332	2,237
<b>2-Graduate Certificate</b>	<b>0</b>	<b>0</b>	<b>0</b>	<b>0</b>	<b>0</b>	<b>0</b>	<b>0</b>	<b>28</b>
<b>Female</b>	0	0	0	0	0	0	0	15
<b>Male</b>	0	0	0	0	0	0	0	13
<b>3-Masters</b>	<b>1,225</b>	<b>1,420</b>	<b>1,399</b>	<b>1,577</b>	<b>1,587</b>	<b>1,606</b>	<b>1,755</b>	<b>1,774</b>
<b>Female</b>	646	758	699	801	779	807	867	893
<b>Male</b>	579	662	700	776	808	799	888	881
<b>4-Doctorate</b>	<b>227</b>	<b>203</b>	<b>204</b>	<b>235</b>	<b>232</b>	<b>230</b>	<b>251</b>	<b>249</b>
<b>Female</b>	108	96	88	111	113	94	117	118
<b>Male</b>	119	107	116	124	119	136	134	131
<b>5-D.V.M.</b>	<b>125</b>	<b>131</b>	<b>137</b>	<b>127</b>	<b>140</b>	<b>139</b>	<b>126</b>	<b>130</b>
<b>Female</b>	101	97	99	96	114	119	94	99
<b>Male</b>	24	34	38	31	26	20	32	31
<b>Total</b>	<b>5,811</b>	<b>6,088</b>	<b>6,176</b>	<b>6,615</b>	<b>6,838</b>	<b>6,937</b>	<b>7,181</b>	<b>7,176</b>

Degrees Awarded by Degree Category and Gender - Percent of Students

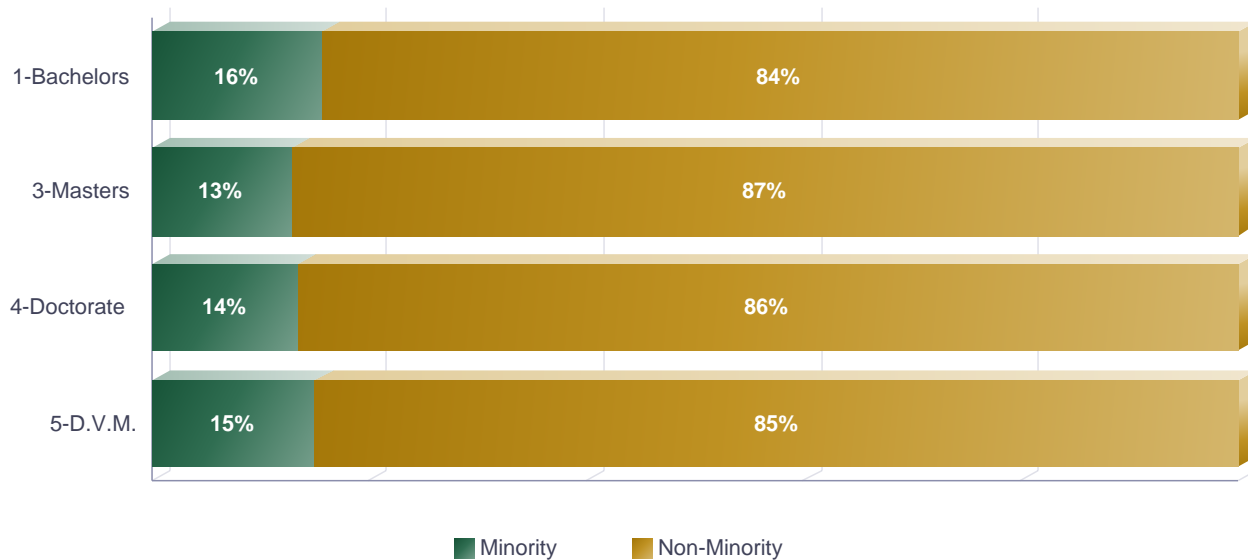




Degrees Awarded History by Degree Category and Minority Status

	2008-09	2009-10	2010-11	2011-12	2012-13	2013-14	2014-15	2015-16
<b>1-Bachelors</b>	<b>4,234</b>	<b>4,334</b>	<b>4,436</b>	<b>4,676</b>	<b>4,879</b>	<b>4,962</b>	<b>5,049</b>	<b>4,995</b>
<b>Non-Minority</b>	3,732	3,804	3,866	4,101	4,241	4,300	4,259	4,171
<b>Minority</b>	502	530	570	575	638	662	790	824
<b>2-Graduate Certificate</b>	<b>0</b>	<b>0</b>	<b>0</b>	<b>0</b>	<b>0</b>	<b>0</b>	<b>0</b>	<b>28</b>
<b>Non-Minority</b>	0	0	0	0	0	0	0	25
<b>Minority</b>	0	0	0	0	0	0	0	3
<b>3-Masters</b>	<b>1,225</b>	<b>1,420</b>	<b>1,399</b>	<b>1,577</b>	<b>1,587</b>	<b>1,606</b>	<b>1,755</b>	<b>1,774</b>
<b>Non-Minority</b>	1,102	1,248	1,233	1,364	1,373	1,403	1,529	1,534
<b>Minority</b>	123	172	166	213	214	203	226	240
<b>4-Doctorate</b>	<b>227</b>	<b>203</b>	<b>204</b>	<b>235</b>	<b>232</b>	<b>230</b>	<b>251</b>	<b>249</b>
<b>Non-Minority</b>	203	185	185	206	208	203	217	213
<b>Minority</b>	24	18	19	29	24	27	34	36
<b>5-D.V.M.</b>	<b>125</b>	<b>131</b>	<b>137</b>	<b>127</b>	<b>140</b>	<b>139</b>	<b>126</b>	<b>130</b>
<b>Non-Minority</b>	113	116	112	104	119	114	107	112
<b>Minority</b>	12	15	25	23	21	25	19	18
<b>Total</b>	<b>5,811</b>	<b>6,088</b>	<b>6,176</b>	<b>6,615</b>	<b>6,838</b>	<b>6,937</b>	<b>7,181</b>	<b>7,176</b>

Degrees Awarded by Degree Category and Minority Status - Percent of Students

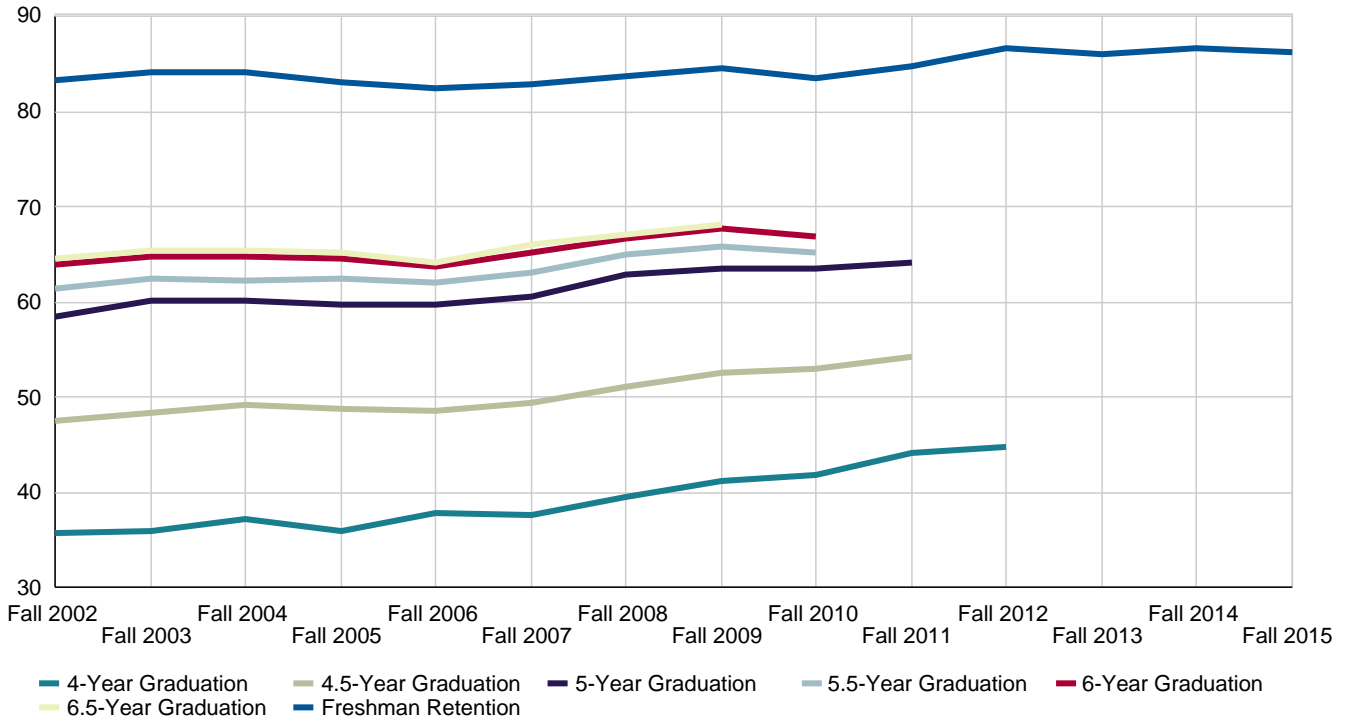




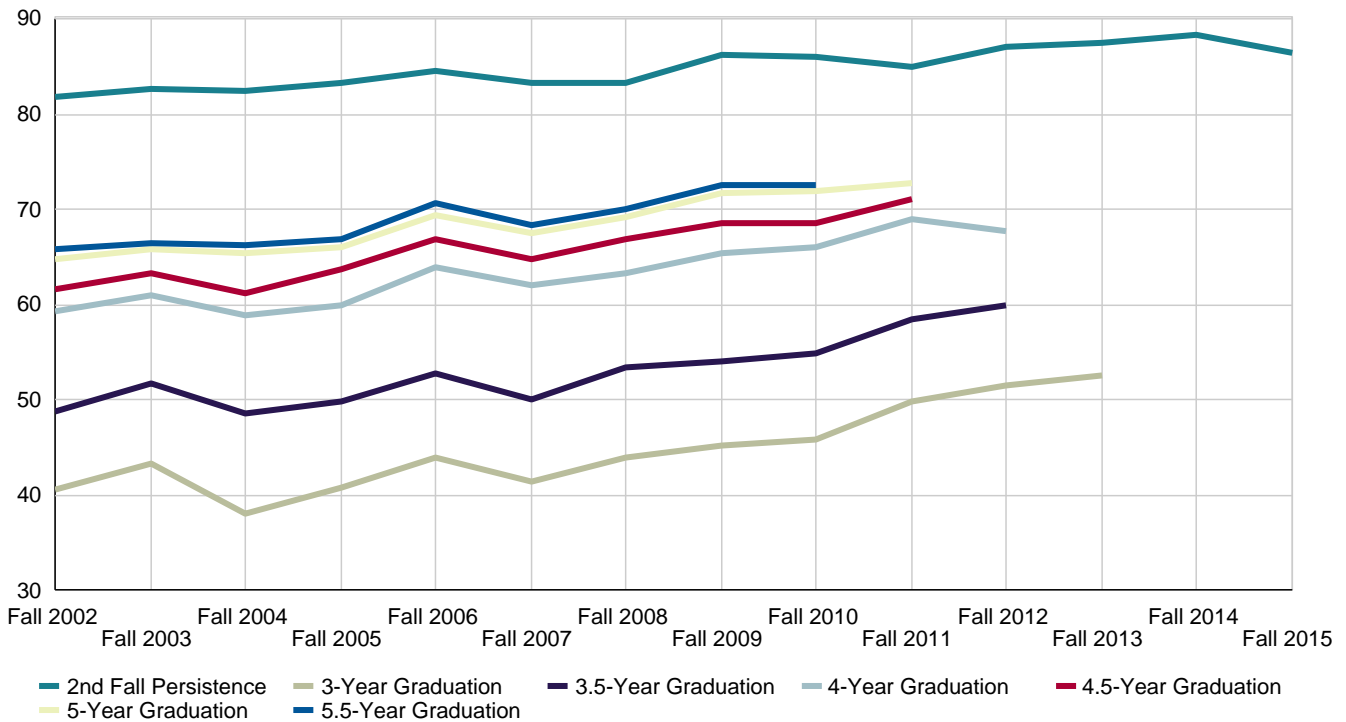
# Student Success



History of New Freshman Retention and Graduation Rates



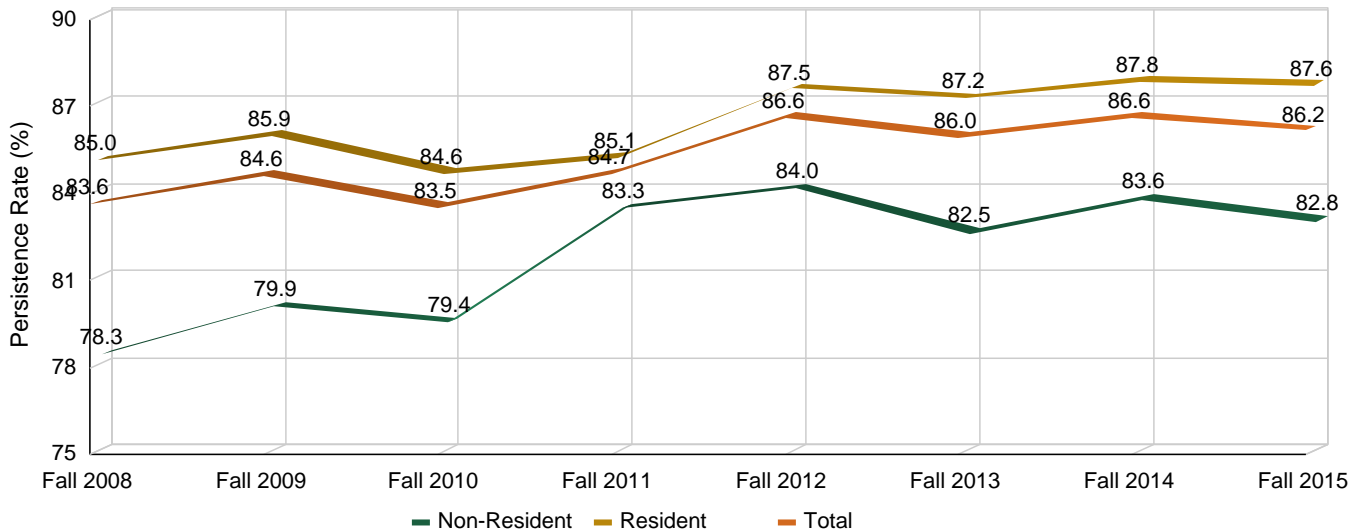
History of Transfer Students 2nd-Fall Persistence and Graduation Rates



**Freshman Retention - By Sub-Population**

	Fall 2008	Fall 2009	Fall 2010	Fall 2011	Fall 2012	Fall 2013	Fall 2014	Fall 2015
<b>Female</b>	82.4%	84.6%	82.9%	84.4%	85.8%	85.8%	86.4%	86.0%
<b>Male</b>	85.2%	84.7%	84.3%	85.1%	87.7%	86.2%	86.8%	86.4%
<b>Not First-Generation</b>	84.8%	86.1%	84.9%	86.8%	88.4%	87.5%	88.8%	87.3%
<b>First Generation</b>	79.9%	79.9%	79.1%	78.6%	81.6%	81.0%	79.7%	82.7%
<b>Not Pell Recipient</b>	84.2%	85.6%	83.8%	85.8%	88.1%	86.8%	87.6%	86.7%
<b>Pell Recipient</b>	80.4%	80.3%	82.6%	81.2%	81.7%	82.8%	82.8%	84.0%
<b>Non-STEM Major</b>	82.4%	83.5%	82.7%	83.6%	85.2%	84.8%	86.4%	85.5%
<b>STEM Major</b>	86.4%	86.9%	85.2%	86.9%	89.1%	87.9%	87.0%	87.2%
<b>Non-Resident</b>	78.3%	79.9%	79.4%	83.3%	84.0%	82.5%	83.6%	82.8%
<b>Resident</b>	85.0%	85.9%	84.6%	85.1%	87.5%	87.2%	87.8%	87.6%
<b>Minority</b>	80.2%	83.1%	81.3%	83.7%	84.7%	84.3%	84.4%	83.9%
<b>Non-Minority</b>	84.2%	84.9%	84.0%	84.9%	87.1%	86.4%	87.2%	86.8%
<b>Total</b>	<b>83.6%</b>	<b>84.6%</b>	<b>83.5%</b>	<b>84.7%</b>	<b>86.6%</b>	<b>86.0%</b>	<b>86.6%</b>	<b>86.2%</b>

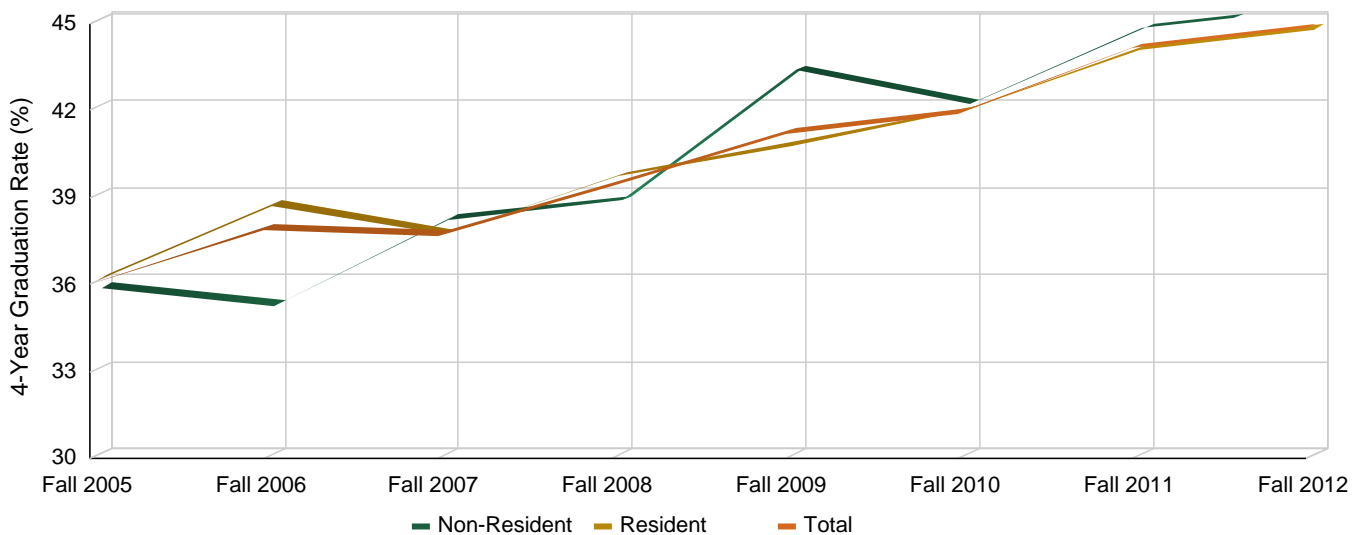
**Freshman Retention by Residency - Comparison with Total**



**New Freshman 4-Year Graduation Rates - By Sub-Population**

	Fall 2005	Fall 2006	Fall 2007	Fall 2008	Fall 2009	Fall 2010	Fall 2011	Fall 2012
<b>Female</b>	43.3%	46.2%	44.5%	47.0%	49.2%	48.0%	50.6%	52.5%
<b>Male</b>	26.1%	26.8%	29.4%	30.0%	31.3%	34.2%	36.1%	35.2%
<b>Not First-Generation</b>	37.0%	38.7%	39.6%	41.0%	42.6%	44.9%	46.6%	47.1%
<b>First Generation</b>	33.4%	35.9%	32.0%	34.6%	37.1%	32.0%	37.0%	38.4%
<b>Not Pell Recipient</b>	36.9%	39.0%	38.7%	40.5%	43.0%	43.4%	46.5%	46.9%
<b>Pell Recipient</b>	30.5%	30.8%	31.6%	33.2%	33.2%	36.7%	36.7%	37.7%
<b>Non-STEM Major</b>	37.1%	38.0%	38.7%	40.9%	41.8%	42.4%	44.9%	47.6%
<b>STEM Major</b>	32.2%	37.4%	35.0%	36.0%	40.1%	41.0%	42.6%	39.9%
<b>Non-Resident</b>	35.7%	35.1%	38.1%	38.7%	43.2%	42.0%	44.7%	45.3%
<b>Resident</b>	36.0%	38.6%	37.6%	39.6%	40.7%	41.9%	44.0%	44.7%
<b>Minority</b>	30.1%	31.7%	29.3%	32.5%	37.9%	30.5%	38.2%	38.6%
<b>Non-Minority</b>	36.9%	39.0%	39.1%	40.5%	41.8%	44.2%	45.5%	46.3%
<b>Total</b>	<b>36.0%</b>	<b>37.9%</b>	<b>37.7%</b>	<b>39.4%</b>	<b>41.2%</b>	<b>41.9%</b>	<b>44.1%</b>	<b>44.8%</b>

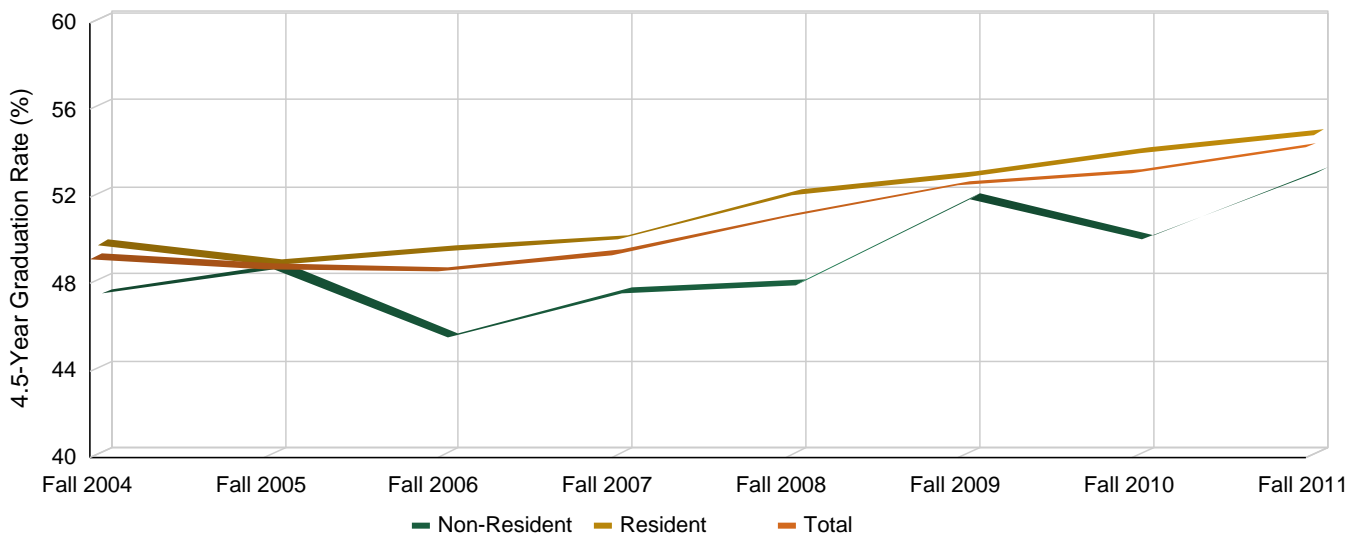
**New Freshman 4-Year Graduation by Residency - Comparison with Total**



**New Freshman 4.5-Year Graduation Rates - By Sub-Population**

	Fall 2004	Fall 2005	Fall 2006	Fall 2007	Fall 2008	Fall 2009	Fall 2010	Fall 2011
<b>Female</b>	54.8%	54.7%	56.3%	56.1%	57.4%	59.5%	58.2%	59.7%
<b>Male</b>	42.2%	40.4%	38.2%	41.1%	43.1%	43.8%	46.5%	47.4%
<b>Not First-Generation</b>	51.0%	50.3%	50.3%	51.6%	52.7%	54.3%	56.2%	56.9%
<b>First Generation</b>	44.2%	44.8%	44.0%	42.5%	45.8%	47.2%	42.7%	46.6%
<b>Not Pell Recipient</b>	50.3%	50.1%	49.6%	50.4%	52.0%	54.3%	54.7%	56.3%
<b>Pell Recipient</b>	41.8%	40.7%	41.3%	42.6%	45.2%	44.7%	47.3%	47.8%
<b>Non-STEM Major</b>	48.6%	49.1%	48.8%	50.2%	52.8%	52.9%	54.3%	55.6%
<b>STEM Major</b>	50.6%	47.2%	47.9%	46.8%	47.1%	51.7%	50.4%	51.6%
<b>Non-Resident</b>	47.3%	48.5%	45.3%	47.3%	47.7%	51.7%	49.8%	52.9%
<b>Resident</b>	49.6%	48.7%	49.4%	49.9%	51.9%	52.8%	53.9%	54.7%
<b>Minority</b>	44.2%	39.1%	40.0%	41.2%	43.0%	47.3%	43.4%	46.4%
<b>Non-Minority</b>	49.8%	50.2%	50.0%	50.7%	52.3%	53.5%	55.0%	56.1%
<b>Total</b>	<b>49.1%</b>	<b>48.7%</b>	<b>48.5%</b>	<b>49.3%</b>	<b>51.0%</b>	<b>52.5%</b>	<b>53.0%</b>	<b>54.3%</b>

**New Freshman 4.5-Year Graduation by Residency - Comparison with Total**

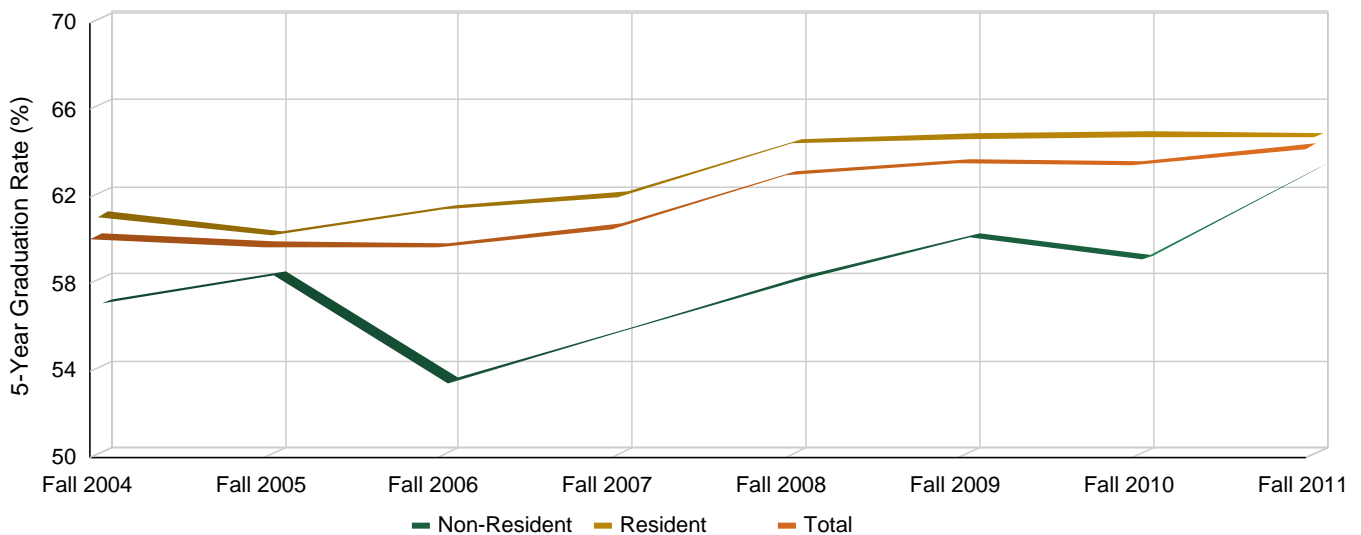




**New Freshman 5-Year Graduation Rates - By Sub-Population**

	Fall 2004	Fall 2005	Fall 2006	Fall 2007	Fall 2008	Fall 2009	Fall 2010	Fall 2011
<b>Female</b>	63.2%	63.2%	64.8%	64.0%	66.4%	67.2%	66.8%	67.1%
<b>Male</b>	56.3%	54.9%	52.8%	56.3%	58.6%	58.9%	59.2%	60.6%
<b>Not First-Generation</b>	62.6%	62.1%	61.8%	63.3%	65.2%	65.9%	66.8%	67.6%
<b>First Generation</b>	53.5%	53.6%	54.0%	52.5%	55.8%	56.2%	52.4%	54.4%
<b>Not Pell Recipient</b>	61.2%	61.2%	60.8%	61.7%	64.0%	65.6%	65.1%	66.8%
<b>Pell Recipient</b>	53.4%	51.1%	51.9%	53.5%	56.5%	54.3%	57.7%	56.2%
<b>Non-STEM Major</b>	59.0%	59.3%	58.9%	60.2%	63.3%	62.2%	63.2%	63.8%
<b>STEM Major</b>	63.1%	60.9%	62.2%	61.3%	62.1%	66.3%	64.0%	65.1%
<b>Non-Resident</b>	56.9%	58.1%	53.2%	55.5%	57.9%	59.9%	58.9%	63.0%
<b>Resident</b>	60.9%	60.0%	61.3%	61.9%	64.3%	64.5%	64.6%	64.6%
<b>Minority</b>	54.2%	51.4%	50.6%	54.3%	53.8%	57.2%	55.3%	55.3%
<b>Non-Minority</b>	60.9%	61.0%	61.2%	61.6%	64.4%	64.7%	65.0%	66.3%
<b>Total</b>	<b>60.1%</b>	<b>59.7%</b>	<b>59.6%</b>	<b>60.5%</b>	<b>63.0%</b>	<b>63.5%</b>	<b>63.4%</b>	<b>64.2%</b>

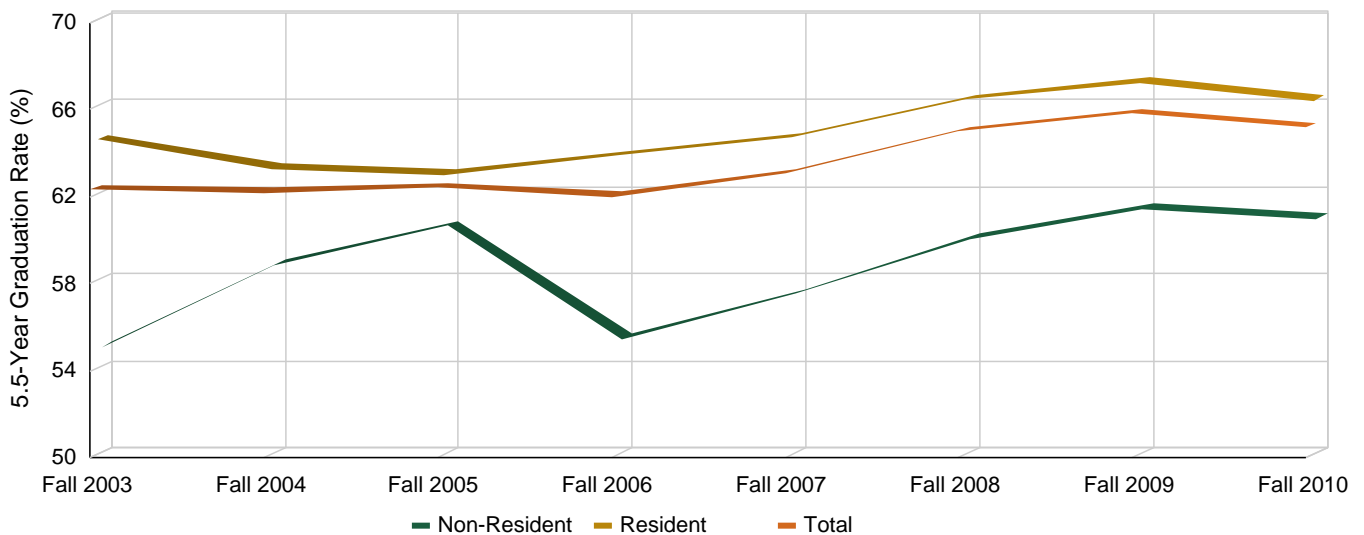
**New Freshman 5-Year Graduation by Residency - Comparison with Total**



**New Freshman 5.5-Year Graduation Rates - By Sub-Population**

	Fall 2003	Fall 2004	Fall 2005	Fall 2006	Fall 2007	Fall 2008	Fall 2009	Fall 2010
<b>Female</b>	64.8%	64.8%	65.3%	66.6%	65.6%	67.6%	68.9%	68.0%
<b>Male</b>	59.5%	59.0%	58.5%	55.9%	59.9%	61.7%	62.1%	61.6%
<b>Not First-Generation</b>	64.6%	64.9%	64.7%	64.4%	65.9%	67.4%	68.2%	68.5%
<b>First Generation</b>	55.9%	55.1%	56.6%	55.8%	54.8%	57.6%	58.7%	54.1%
<b>Not Pell Recipient</b>	63.2%	63.1%	64.0%	63.1%	64.4%	66.1%	67.8%	66.6%
<b>Pell Recipient</b>	56.6%	56.3%	53.2%	55.0%	54.6%	58.6%	57.2%	59.9%
<b>Non-STEM Major</b>	61.6%	61.1%	62.0%	61.1%	62.4%	65.1%	64.7%	64.9%
<b>STEM Major</b>	64.7%	65.1%	63.7%	64.9%	64.8%	64.6%	68.3%	65.6%
<b>Non-Resident</b>	54.9%	58.6%	60.4%	55.2%	57.3%	59.8%	61.2%	60.8%
<b>Resident</b>	64.5%	63.1%	62.9%	63.7%	64.6%	66.3%	67.1%	66.3%
<b>Minority</b>	54.4%	56.3%	54.6%	53.4%	56.7%	55.3%	60.3%	57.4%
<b>Non-Minority</b>	63.4%	63.0%	63.7%	63.5%	64.1%	66.5%	66.9%	66.7%
<b>Total</b>	<b>62.3%</b>	<b>62.2%</b>	<b>62.4%</b>	<b>62.0%</b>	<b>63.0%</b>	<b>65.0%</b>	<b>65.8%</b>	<b>65.2%</b>

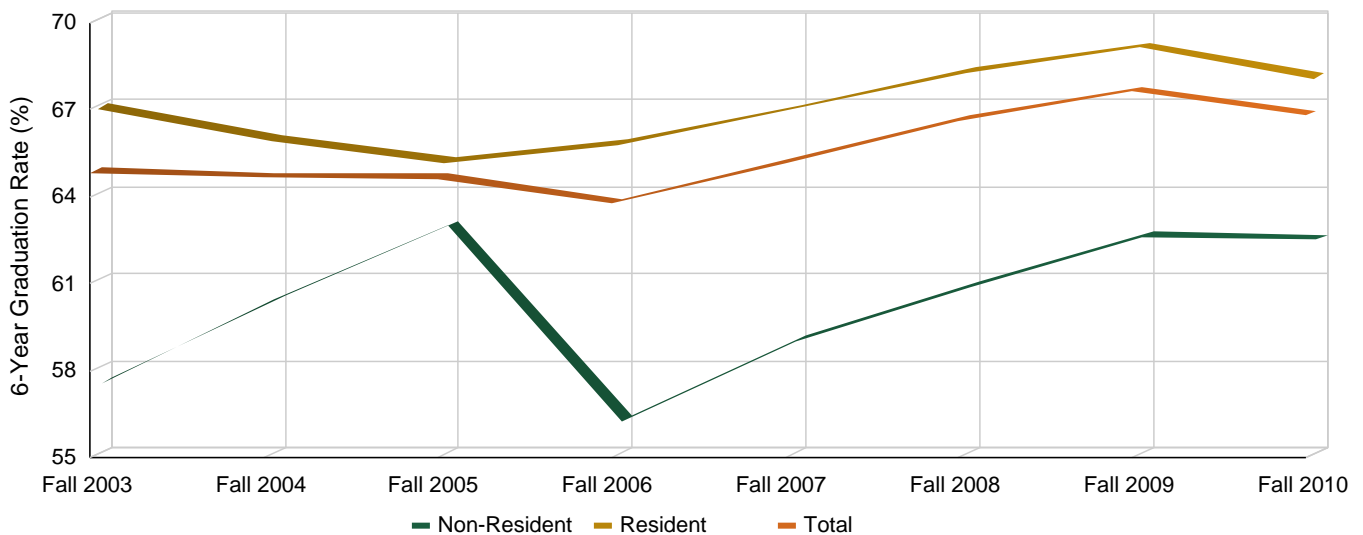
**New Freshman 5.5-Year Graduation by Residency - Comparison with Total**



**New Freshman 6-Year Graduation Rates - By Sub-Population**

	Fall 2003	Fall 2004	Fall 2005	Fall 2006	Fall 2007	Fall 2008	Fall 2009	Fall 2010
<b>Female</b>	66.3%	66.2%	66.6%	67.6%	66.7%	68.6%	70.1%	68.8%
<b>Male</b>	63.1%	62.7%	61.9%	58.6%	63.4%	64.1%	64.6%	64.3%
<b>Not First-Generation</b>	67.0%	67.4%	67.1%	66.2%	67.9%	69.1%	69.6%	70.2%
<b>First Generation</b>	58.6%	57.6%	58.5%	57.3%	57.2%	58.8%	61.5%	55.7%
<b>Not Pell Recipient</b>	65.7%	65.5%	66.1%	64.7%	66.5%	67.8%	69.6%	68.2%
<b>Pell Recipient</b>	59.4%	59.3%	55.8%	57.7%	57.2%	59.9%	59.0%	61.8%
<b>Non-STEM Major</b>	64.1%	63.4%	64.0%	62.8%	64.4%	66.8%	66.5%	66.0%
<b>STEM Major</b>	67.1%	68.1%	66.9%	66.7%	67.4%	66.3%	69.9%	68.4%
<b>Non-Resident</b>	57.4%	60.3%	62.8%	56.1%	58.8%	60.7%	62.4%	62.3%
<b>Resident</b>	66.9%	65.8%	65.0%	65.7%	66.9%	68.2%	69.0%	68.0%
<b>Minority</b>	58.8%	60.1%	57.3%	55.3%	59.7%	57.2%	62.2%	59.1%
<b>Non-Minority</b>	65.7%	65.3%	65.8%	65.2%	66.1%	68.1%	68.6%	68.3%
<b>Total</b>	<b>64.8%</b>	<b>64.7%</b>	<b>64.6%</b>	<b>63.8%</b>	<b>65.2%</b>	<b>66.6%</b>	<b>67.6%</b>	<b>66.8%</b>

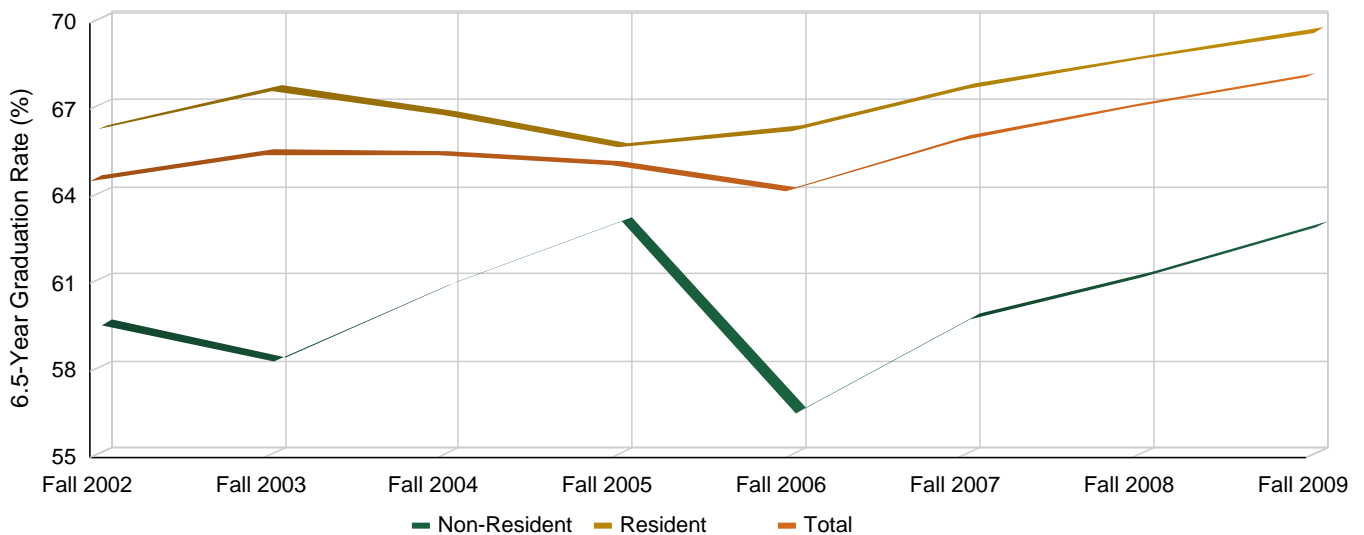
**New Freshman 6-Year Graduation by Residency - Comparison with Total**



**New Freshman 6.5-Year Graduation Rates - By Sub-Population**

	Fall 2002	Fall 2003	Fall 2004	Fall 2005	Fall 2006	Fall 2007	Fall 2008	Fall 2009
<b>Female</b>	66.4%	66.7%	67.0%	66.9%	67.8%	67.1%	69.0%	70.4%
<b>Male</b>	62.3%	64.0%	63.6%	62.6%	59.4%	64.5%	64.7%	65.2%
<b>Not First-Generation</b>	66.5%	67.7%	68.3%	67.7%	66.7%	68.8%	69.6%	70.2%
<b>First Generation</b>	59.6%	59.1%	58.0%	58.7%	57.6%	57.6%	59.1%	61.8%
<b>Not Pell Recipient</b>	65.9%	66.3%	66.3%	66.6%	65.0%	67.2%	68.2%	70.0%
<b>Pell Recipient</b>	56.6%	59.8%	60.2%	56.0%	58.8%	58.2%	60.4%	59.4%
<b>Non-STEM Major</b>	63.8%	64.7%	64.2%	64.4%	63.2%	65.2%	67.1%	67.0%
<b>STEM Major</b>	67.2%	67.8%	68.9%	67.5%	67.4%	67.9%	67.0%	70.5%
<b>Non-Resident</b>	59.4%	58.1%	60.8%	63.0%	56.4%	59.6%	61.1%	62.8%
<b>Resident</b>	66.2%	67.6%	66.7%	65.6%	66.2%	67.6%	68.6%	69.6%
<b>Minority</b>	58.7%	59.0%	61.3%	57.7%	55.6%	60.2%	57.2%	62.2%
<b>Non-Minority</b>	65.5%	66.4%	66.0%	66.3%	65.6%	66.9%	68.6%	69.2%
<b>Total</b>	<b>64.6%</b>	<b>65.5%</b>	<b>65.4%</b>	<b>65.1%</b>	<b>64.2%</b>	<b>65.9%</b>	<b>67.1%</b>	<b>68.1%</b>

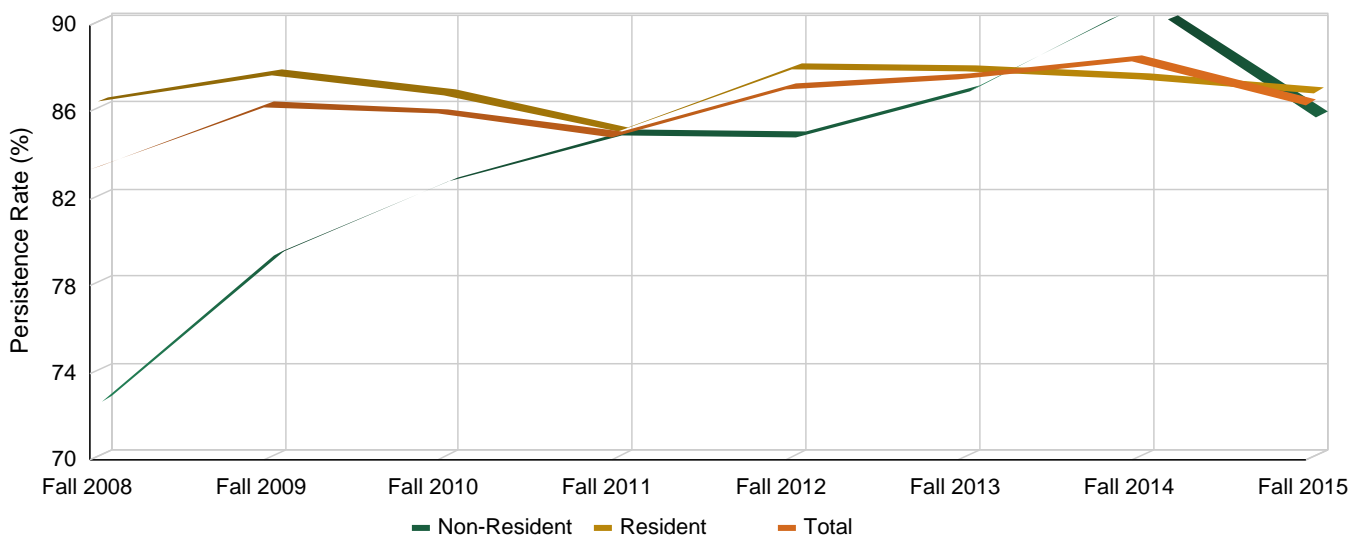
**New Freshman 6.5-Year Graduation by Residency - Comparison with Total**



**Transfer 2nd-Fall Persistence - By Sub-Population**

	Fall 2008	Fall 2009	Fall 2010	Fall 2011	Fall 2012	Fall 2013	Fall 2014	Fall 2015
<b>Female</b>	84.0%	86.6%	83.8%	83.8%	86.2%	88.2%	86.0%	85.8%
<b>Male</b>	82.8%	86.0%	87.5%	85.8%	87.9%	86.9%	90.4%	86.9%
<b>Not First-Generation</b>	83.3%	86.5%	86.7%	85.9%	90.5%	88.2%	89.8%	87.8%
<b>First Generation</b>	83.5%	85.7%	84.4%	82.7%	80.4%	86.1%	84.9%	83.5%
<b>Not Pell Recipient</b>	83.4%	86.6%	86.8%	85.7%	88.7%	88.7%	90.2%	88.2%
<b>Pell Recipient</b>	83.3%	85.4%	84.0%	83.2%	83.9%	84.8%	84.0%	81.5%
<b>Non-STEM Major</b>	82.4%	86.1%	85.8%	84.7%	87.2%	87.9%	88.6%	86.8%
<b>STEM Major</b>	85.7%	86.9%	86.3%	85.5%	86.8%	86.7%	87.9%	85.6%
<b>Non-Resident</b>	72.4%	79.2%	82.5%	84.7%	84.6%	86.8%	90.8%	85.6%
<b>Resident</b>	86.3%	87.6%	86.7%	84.9%	87.8%	87.8%	87.4%	86.7%
<b>Minority</b>	86.4%	87.3%	81.6%	85.9%	81.7%	83.4%	83.6%	82.0%
<b>Non-Minority</b>	82.9%	86.1%	86.6%	84.7%	88.1%	88.3%	89.2%	87.2%
<b>Total</b>	<b>83.3%</b>	<b>86.3%</b>	<b>85.9%</b>	<b>84.9%</b>	<b>87.1%</b>	<b>87.5%</b>	<b>88.3%</b>	<b>86.3%</b>

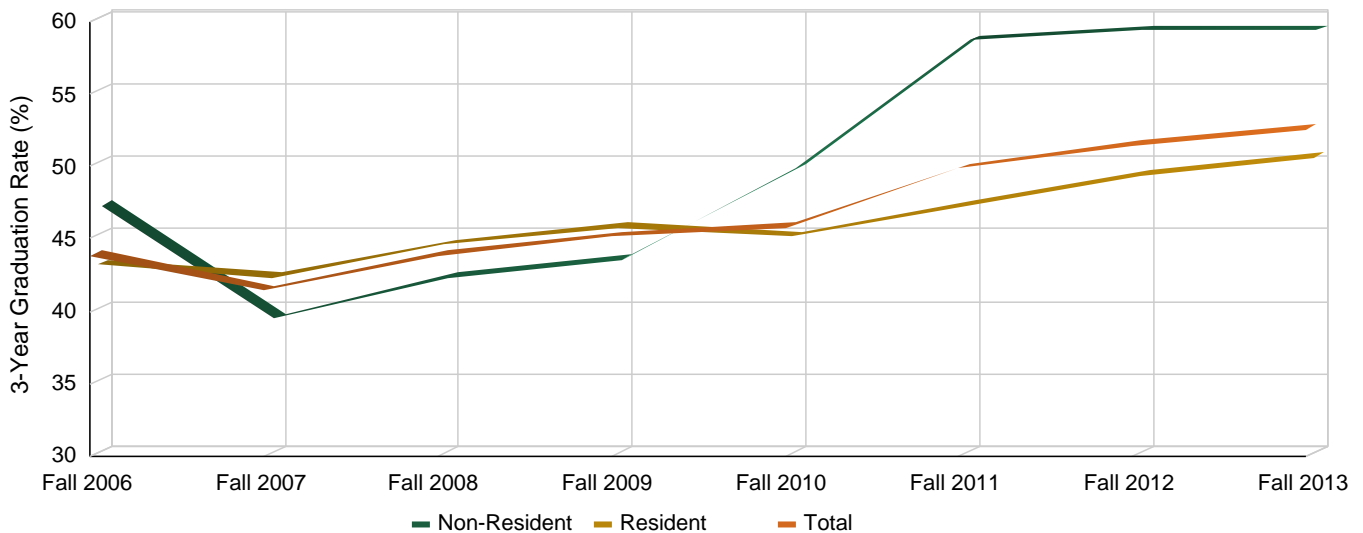
**Transfer 2nd-Fall Persistent by Residency - Comparison with Total**



**Transfer Students 3-Year Graduation Rates - By Sub-Population**

	Fall 2006	Fall 2007	Fall 2008	Fall 2009	Fall 2010	Fall 2011	Fall 2012	Fall 2013
<b>Female</b>	50.1%	46.4%	48.8%	52.3%	53.1%	55.4%	57.3%	59.8%
<b>Male</b>	37.8%	37.1%	39.6%	38.7%	40.3%	44.9%	45.9%	46.1%
<b>Not First-Generation</b>	42.9%	43.0%	42.2%	43.8%	47.1%	51.9%	56.5%	53.0%
<b>First Generation</b>	45.7%	38.1%	47.3%	48.1%	43.0%	45.7%	41.6%	51.8%
<b>Not Pell Recipient</b>	43.1%	42.1%	44.9%	43.0%	47.3%	51.8%	55.2%	53.8%
<b>Pell Recipient</b>	47.1%	38.9%	40.4%	51.1%	42.3%	45.7%	43.9%	49.7%
<b>Non-STEM Major</b>	44.3%	40.4%	43.7%	44.6%	46.1%	50.8%	51.8%	56.1%
<b>STEM Major</b>	42.6%	44.1%	44.3%	47.1%	44.7%	47.0%	50.7%	45.9%
<b>Non-Resident</b>	47.0%	39.2%	42.0%	43.3%	49.5%	58.4%	59.1%	59.1%
<b>Resident</b>	43.0%	42.1%	44.4%	45.6%	45.0%	47.1%	49.1%	50.4%
<b>Minority</b>	39.9%	32.0%	39.3%	43.7%	31.9%	40.3%	38.7%	51.8%
<b>Non-Minority</b>	44.5%	43.0%	44.6%	45.4%	47.9%	51.4%	53.8%	52.7%
<b>Total</b>	<b>43.9%</b>	<b>41.4%</b>	<b>43.9%</b>	<b>45.2%</b>	<b>45.8%</b>	<b>49.9%</b>	<b>51.5%</b>	<b>52.6%</b>

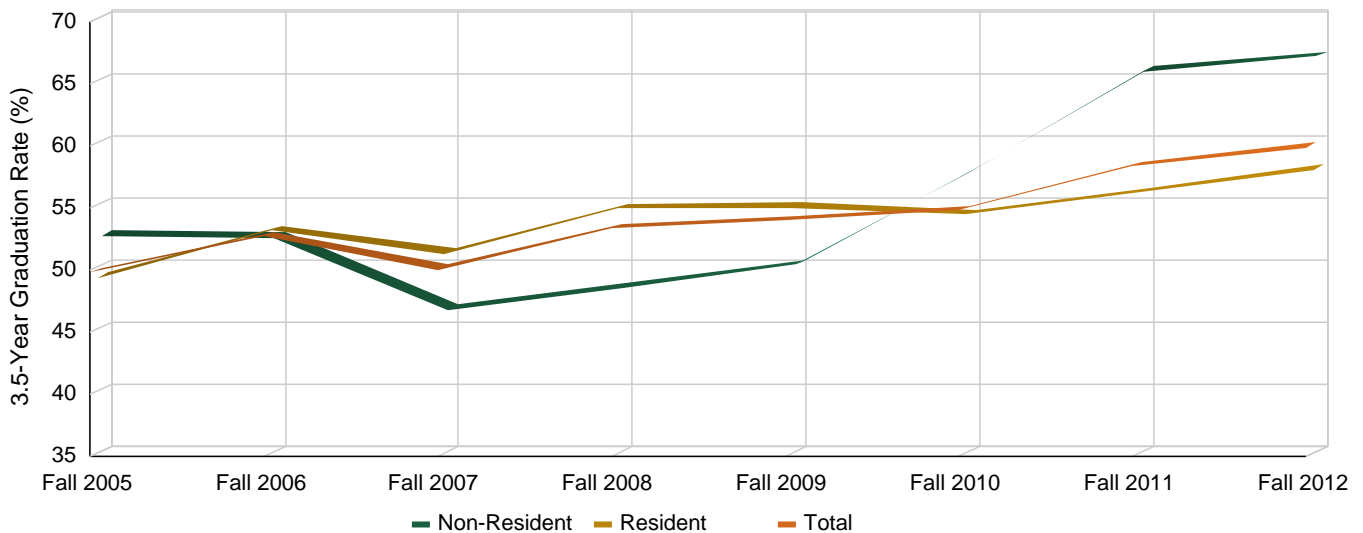
**Transfer Students 3-Year Graduation by Residency - Comparison with Total**



**Transfer Students 3.5-Year Graduation Rates - By Sub-Population**

	Fall 2005	Fall 2006	Fall 2007	Fall 2008	Fall 2009	Fall 2010	Fall 2011	Fall 2012
<b>Female</b>	51.7%	58.1%	53.9%	57.3%	61.1%	62.7%	62.6%	65.4%
<b>Male</b>	48.0%	47.5%	46.5%	49.8%	47.5%	48.9%	54.5%	54.7%
<b>Not First-Generation</b>	50.1%	52.5%	51.9%	52.5%	53.6%	55.9%	61.3%	64.9%
<b>First Generation</b>	49.3%	53.3%	45.8%	55.0%	54.9%	52.5%	52.3%	50.1%
<b>Not Pell Recipient</b>	50.2%	52.5%	51.4%	53.9%	52.3%	56.0%	61.1%	63.5%
<b>Pell Recipient</b>	48.5%	53.8%	44.9%	51.3%	58.6%	52.0%	52.5%	52.6%
<b>Non-STEM Major</b>	49.3%	51.7%	49.5%	52.3%	53.7%	55.8%	58.6%	60.0%
<b>STEM Major</b>	51.4%	55.7%	51.4%	55.9%	55.0%	51.7%	57.7%	59.8%
<b>Non-Resident</b>	52.4%	52.2%	46.4%	48.2%	50.0%	57.5%	65.6%	66.8%
<b>Resident</b>	49.1%	52.9%	51.0%	54.7%	54.8%	54.2%	56.0%	57.8%
<b>Minority</b>	41.1%	46.2%	43.2%	49.3%	54.8%	40.5%	51.8%	47.6%
<b>Non-Minority</b>	51.0%	53.7%	51.2%	53.9%	53.9%	57.0%	59.4%	62.2%
<b>Total</b>	<b>49.8%</b>	<b>52.7%</b>	<b>50.0%</b>	<b>53.3%</b>	<b>54.0%</b>	<b>54.8%</b>	<b>58.4%</b>	<b>59.9%</b>

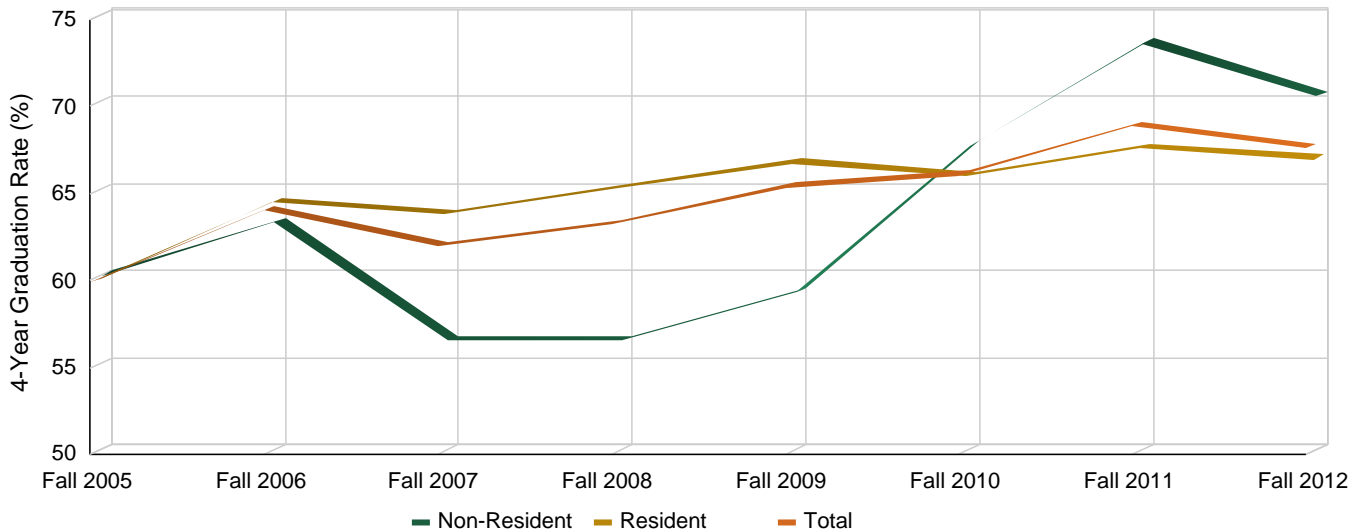
**Transfer Students 3.5-Year Graduation by Residency - Comparison with Total**



**Transfer Students 4-Year Graduation Rates - By Sub-Population**

	Fall 2005	Fall 2006	Fall 2007	Fall 2008	Fall 2009	Fall 2010	Fall 2011	Fall 2012
<b>Female</b>	61.0%	67.2%	63.3%	66.8%	70.5%	70.3%	71.7%	71.4%
<b>Male</b>	58.8%	61.0%	60.8%	60.1%	60.6%	62.9%	66.3%	64.0%
<b>Not First-Generation</b>	60.3%	65.5%	64.5%	64.1%	65.1%	68.3%	71.7%	72.2%
<b>First Generation</b>	59.2%	61.1%	56.6%	61.5%	65.9%	61.5%	63.0%	58.6%
<b>Not Pell Recipient</b>	60.5%	64.0%	62.8%	64.3%	64.6%	68.2%	72.0%	70.5%
<b>Pell Recipient</b>	57.6%	64.1%	58.7%	59.2%	67.3%	61.1%	62.1%	61.8%
<b>Non-STEM Major</b>	58.6%	62.4%	60.4%	62.7%	64.5%	66.6%	69.0%	67.3%
<b>STEM Major</b>	63.3%	68.8%	66.0%	64.6%	67.8%	64.3%	68.5%	68.3%
<b>Non-Resident</b>	60.0%	63.1%	56.3%	56.2%	59.0%	67.5%	73.4%	70.3%
<b>Resident</b>	59.9%	64.3%	63.6%	65.1%	66.6%	65.8%	67.4%	66.8%
<b>Minority</b>	46.6%	55.2%	56.2%	60.0%	65.1%	55.2%	62.8%	56.5%
<b>Non-Minority</b>	61.7%	65.3%	62.9%	63.7%	65.4%	67.7%	69.9%	69.6%
<b>Total</b>	<b>59.9%</b>	<b>64.0%</b>	<b>62.0%</b>	<b>63.2%</b>	<b>65.4%</b>	<b>66.1%</b>	<b>68.9%</b>	<b>67.6%</b>

**Transfer Students 4-Year Graduation by Residency - Comparison with Total**

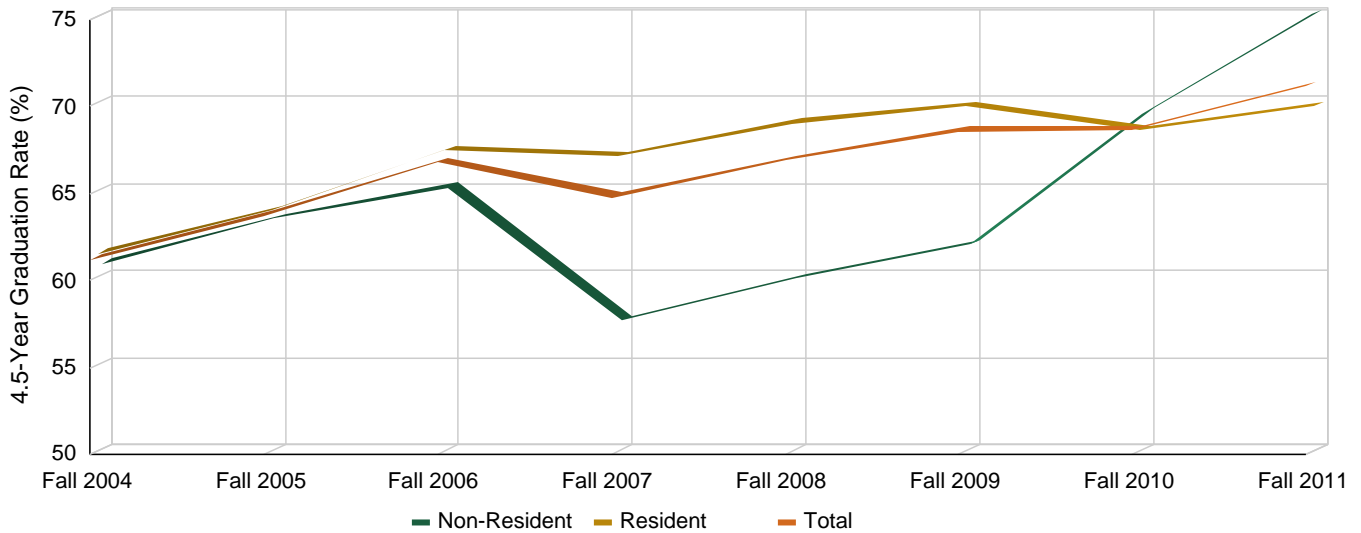




**Transfer Students - 4.5-Year Graduation Rates - By Sub-Population**

	Fall 2004	Fall 2005	Fall 2006	Fall 2007	Fall 2008	Fall 2009	Fall 2010	Fall 2011
<b>Female</b>	67.0%	64.0%	69.3%	65.5%	70.4%	73.3%	71.3%	73.5%
<b>Male</b>	56.3%	63.5%	64.3%	64.1%	63.8%	64.2%	66.6%	69.1%
<b>Not First-Generation</b>	62.5%	64.9%	68.8%	67.1%	67.8%	69.3%	71.4%	73.5%
<b>First Generation</b>	59.0%	61.5%	62.9%	59.8%	65.2%	67.0%	63.0%	66.2%
<b>Not Pell Recipient</b>	61.2%	64.9%	67.0%	65.7%	67.8%	68.0%	71.0%	73.9%
<b>Pell Recipient</b>	61.4%	59.5%	65.9%	61.5%	63.6%	69.9%	63.0%	65.1%
<b>Non-STEM Major</b>	59.5%	62.4%	64.6%	63.3%	66.3%	67.7%	69.3%	71.8%
<b>STEM Major</b>	67.0%	67.3%	73.4%	68.9%	68.5%	70.9%	66.7%	69.3%
<b>Non-Resident</b>	60.7%	63.3%	65.1%	57.4%	59.8%	61.8%	69.3%	75.1%
<b>Resident</b>	61.4%	63.8%	67.3%	66.9%	68.8%	69.8%	68.5%	69.8%
<b>Minority</b>	55.2%	49.3%	57.3%	59.8%	64.3%	68.3%	58.9%	64.9%
<b>Non-Minority</b>	62.0%	65.7%	68.2%	65.6%	67.3%	68.6%	70.1%	72.2%
<b>Total</b>	<b>61.2%</b>	<b>63.7%</b>	<b>66.8%</b>	<b>64.8%</b>	<b>66.9%</b>	<b>68.5%</b>	<b>68.6%</b>	<b>71.2%</b>

**Transfer Students 4.5-Year Graduation by Residency - Comparison with Total**



**Transfer Students 5-Year Graduation Rates - By Sub-Population**

	Fall 2004	Fall 2005	Fall 2006	Fall 2007	Fall 2008	Fall 2009	Fall 2010	Fall 2011
<b>Female</b>	68.9%	65.4%	71.1%	67.7%	72.2%	76.1%	72.1%	74.4%
<b>Male</b>	62.3%	66.6%	67.8%	67.4%	66.7%	67.7%	71.9%	71.3%
<b>Not First-Generation</b>	66.9%	67.2%	71.9%	69.5%	69.8%	72.5%	75.2%	75.6%
<b>First Generation</b>	62.6%	63.8%	64.8%	63.3%	68.1%	70.1%	65.5%	66.9%
<b>Not Pell Recipient</b>	65.6%	67.2%	69.5%	68.5%	70.0%	71.8%	74.3%	75.2%
<b>Pell Recipient</b>	64.6%	61.8%	69.5%	64.0%	66.5%	71.5%	66.6%	67.4%
<b>Non-STEM Major</b>	63.7%	64.5%	67.8%	65.8%	69.0%	71.4%	72.4%	73.3%
<b>STEM Major</b>	70.9%	70.0%	74.5%	72.1%	69.8%	72.7%	70.7%	71.1%
<b>Non-Resident</b>	62.3%	65.1%	65.9%	59.7%	62.1%	64.0%	72.2%	75.4%
<b>Resident</b>	66.1%	66.3%	70.5%	69.8%	71.2%	73.1%	72.0%	71.9%
<b>Minority</b>	58.7%	52.1%	62.2%	63.9%	67.1%	69.0%	62.0%	67.0%
<b>Non-Minority</b>	66.2%	68.0%	70.5%	68.1%	69.6%	72.1%	73.5%	73.7%
<b>Total</b>	<b>65.3%</b>	<b>66.0%</b>	<b>69.5%</b>	<b>67.5%</b>	<b>69.3%</b>	<b>71.7%</b>	<b>72.0%</b>	<b>72.8%</b>

**Transfer Students 5-Year Graduation by Residency - Comparison with Total**

