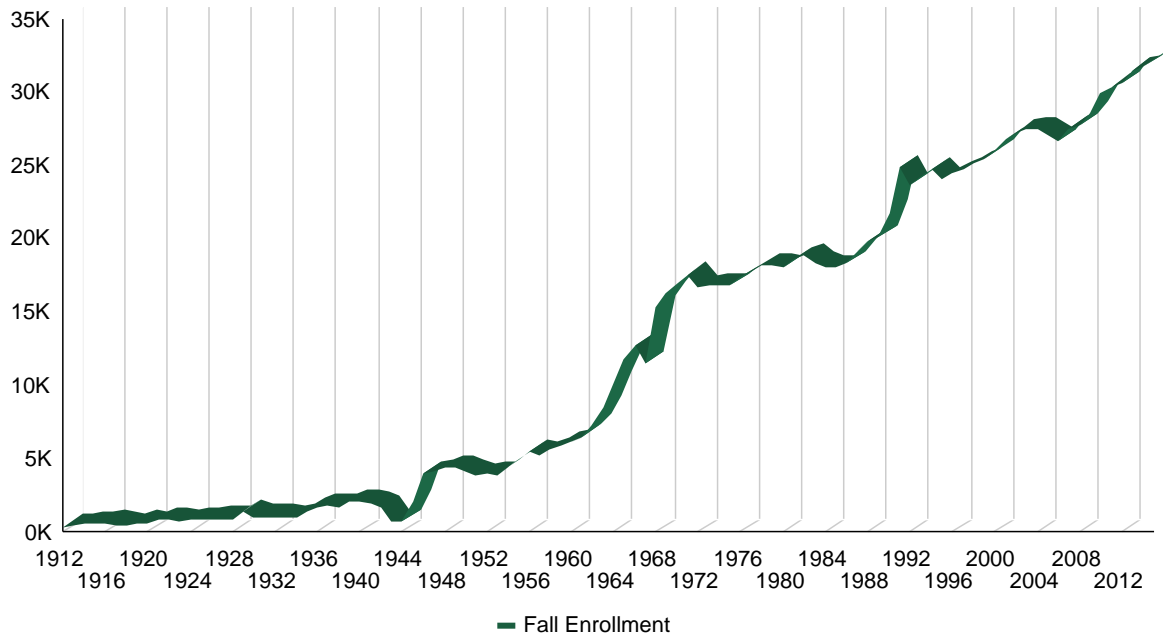


Student Highlights

- Total university headcount enrollment (includes non-resident instruction students): 32,236 up 21% from fall 2006
- Total on-campus, resident instruction headcount enrollment: 27,566 up 10% from fall 2008
- Three Colleges with the largest number of undergraduate primary and secondary majors: Liberal Arts (4,604), Health and Human Science (4,599), Natural Sciences(3,881)
- Three Colleges with the largest number of graduate primary and secondary majors: Veterinary Medicine and Biomedical Sciences (908), Engineering (780), Natural Sciences (633)
- Total new freshmen enrolled: 4,737, up 8% from fall 2007
- Total new undergraduate transfer students: 1,657, up 17% from fall 2007
- Total new and readmitted graduate students enrolled: 1,174, up 9% from fall 2007
- College with the most new freshmen (excludes open option majors): Natural Sciences with 819 students
- Total student population who are ethnic minorities: 18%, up from 13% in fall 2008
- Student population who are women: 51%
- Undergraduate student population who are Colorado residents: 76%
- Total student credit hour production for the academic year 2014-15: 688,859 up 9% from AY 2007-08
- Total student full-time equivalent (FTE) for the academic year 2014-15: 22,962, up 9% from AY 2007-08
- Student-faculty ratio: 16.1
- Number of degrees awarded in 2014-15: 7,181 up 27% from AY 2007-08
- First-year persistence rate for new freshmen (fall 2014 to fall 2015): 86.6%
- Six-year graduation rate for new freshmen (entered fall 2009 and graduated by summer 2015): 67.6%
- Undergraduate classes with fewer than 20 students in fall 2014: 38.0%
- Undergraduate classes with 50 or more students in fall 2014: 18.0%
- Undergraduate student credit hours taught by tenure-track faculty in AY 2014-15: 36.0%

Note: Student highlights are for fall term 2015 (unless otherwise noted).

History of Student Enrollment since 1912



Fall Term Enrollment History - All Students at Census

Fall	Enrollment	Fall	Enrollment	Fall	Enrollment	Fall	Enrollment	Fall	Enrollment	Fall	Enrollment
1912	367	1932	1,067	1952	4,036	1972	16,656	1992	23,707	2012	30,647
1913	492	1933	985	1953	3,938	1973	16,860	1993	24,203	2013	31,514
1914	569	1934	1,042	1954	4,478	1974	16,798	1994	24,739	2014	31,725
1915	579	1935	1,472	1955	4,992	1975	16,809	1995	24,123	2015	32,236
1916	663	1936	1,732	1956	5,525	1976	17,426	1996	24,465		
1917	501	1937	1,844	1957	5,282	1977	17,812	1997	24,719		
1918	493	1938	1,750	1958	5,593	1978	18,223	1998	25,186		
1919	633	1939	2,048	1959	5,977	1979	18,255	1999	25,452		
1920	567	1940	2,057	1960	6,131	1980	18,083	2000	26,005		
1921	819	1941	1,982	1961	6,529	1981	18,651	2001	26,809		
1922	841	1942	1,707	1962	7,304	1982	18,909	2002	27,290		
1923	675	1943	756	1963	8,460	1983	18,295	2003	27,543		
1924	871	1944	736	1964	10,175	1984	18,094	2004	27,536		
1925	876	1945	2,057	1965	11,848	1985	18,084	2005	27,133		
1926	909	1946	4,015	1966	12,701	1986	18,381	2006	26,723		
1927	904	1947	4,175	1967	11,510	1987	19,192	2007	27,569		
1928	914	1948	4,431	1968	15,361	1988	19,885	2008	27,800		
1929	1,408	1949	4,392	1969	16,252	1989	20,149	2009	28,547		
1930	1,072	1950	4,138	1970	17,045	1990	21,820	2010	29,932		
1931	1,050	1951	3,820	1971	17,608	1991	24,911	2011	30,450		

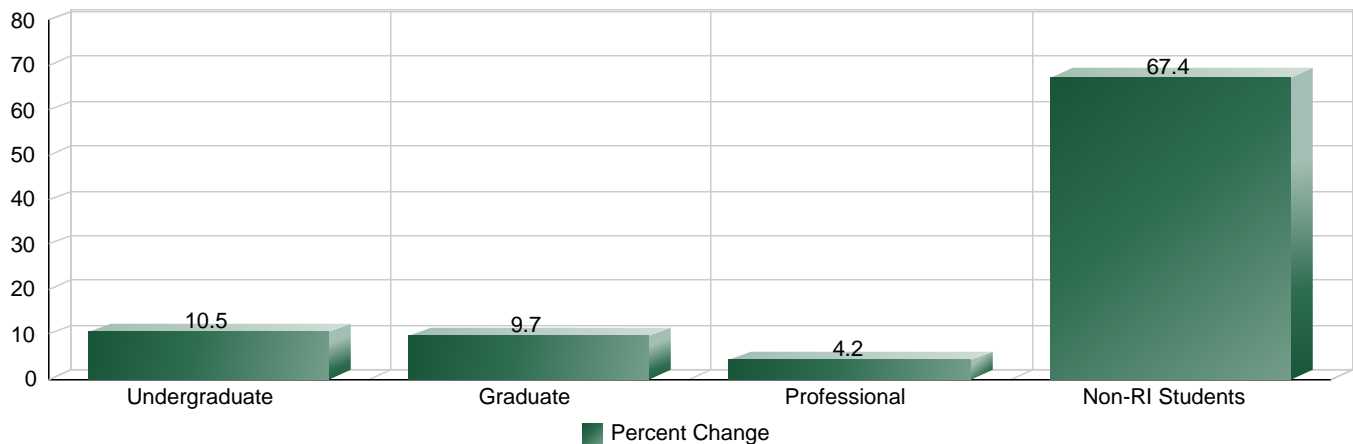
Fall Term University Enrollment History - Number of Students at Census

	2008	2009	2010	2011	2012	2013	2014	2015
RI Students	25,011	25,413	26,356	26,735	26,769	27,034	27,086	27,566
Undergraduate	20,829	21,204	21,953	22,300	22,412	22,565	22,506	23,009
Graduate	3,655	3,671	3,864	3,887	3,808	3,927	4,047	4,008
Professional	527	538	539	548	549	542	533	549
Non-RI Students	2,789	3,134	3,576	3,715	3,878	4,480	4,639	4,670
Employee	258	272	238	256	400	433	479	514
Guest	368	305	291	215	165	160	123	96
CSU Online	1,833	2,160	2,601	2,778	2,841	3,140	3,218	3,264
Study Abroad	164	135	167	183	188	192	208	168
Other	166	262	279	283	284	555	611	628
Total	27,800	28,547	29,932	30,450	30,647	31,514	31,725	32,236

Fall Term University Enrollment History - Percent of Students at Census

	2008	2009	2010	2011	2012	2013	2014	2015
RI Students								
Undergraduate	75%	74%	73%	73%	73%	72%	71%	71%
Graduate	13%	13%	13%	13%	12%	12%	13%	12%
Professional	2%	2%	2%	2%	2%	2%	2%	2%
Non-RI Students								
Employee	1%	1%	1%	1%	1%	1%	2%	2%
Guest	1%	1%	1%	1%	1%	1%	0%	0%
CSU Online	7%	8%	9%	9%	9%	10%	10%	10%
Study Abroad	1%	0%	1%	1%	1%	1%	1%	1%
Other	1%	1%	1%	1%	1%	2%	2%	2%

Percent Change from 2008 to 2015



Fall Term University Enrollment History - Number of Students By Sub-Population

	2008	2009	2010	2011	2012	2013	2014	2015
Female	13,072	13,209	13,526	13,812	13,829	13,909	13,891	14,102
Male	11,939	12,204	12,830	12,923	12,940	13,125	13,195	13,464
Non-First Generation	18,960	19,317	20,278	20,446	20,403	20,852	21,038	21,285
First Generation	6,051	6,096	6,078	6,289	6,366	6,182	6,048	6,281
Non-Pell Recipient	21,600	21,146	21,194	21,299	21,269	21,624	21,884	22,479
Pell Recipient	3,411	4,267	5,162	5,436	5,500	5,410	5,202	5,087
Non-STEM Major	16,029	16,085	16,540	16,542	16,271	15,866	15,531	15,383
STEM Major	8,982	9,328	9,816	10,193	10,498	11,168	11,555	12,183
Non-Veteran	24,610	24,976	25,748	25,975	25,937	26,090	26,231	26,737
Veteran	401	437	608	760	832	944	855	829
Non-Minority	21,807	22,076	22,725	22,825	22,584	22,603	22,456	22,644
Minority	3,204	3,337	3,631	3,910	4,185	4,431	4,630	4,922
Non-Minority								
No Response	1,563	1,652	1,374	1,568	1,653	1,533	1,191	1,280
White	19,362	19,533	20,311	20,124	19,705	19,564	19,406	19,383
International	882	891	1,040	1,133	1,226	1,506	1,859	1,981
Minority								
Asian	508	497	481	468	468	528	609	644
Hispanic/Latino	1,618	1,705	1,881	2,066	2,254	2,401	2,560	2,797
Multi-Racial	518	538	656	718	808	873	726	749
Native American	125	143	110	108	104	96	139	147
Black	383	402	457	508	515	511	569	555
Hawaiian/Pac. Islander	52	52	46	42	36	22	27	30
Total	25,011	25,413	26,356	26,735	26,769	27,034	27,086	27,566

* Data reflects RI students on campus as of the Census date of each Fall term.

**Fall Term University Enrollment History By College - Number of Majors
 (Includes Primary and Secondary Majors)**

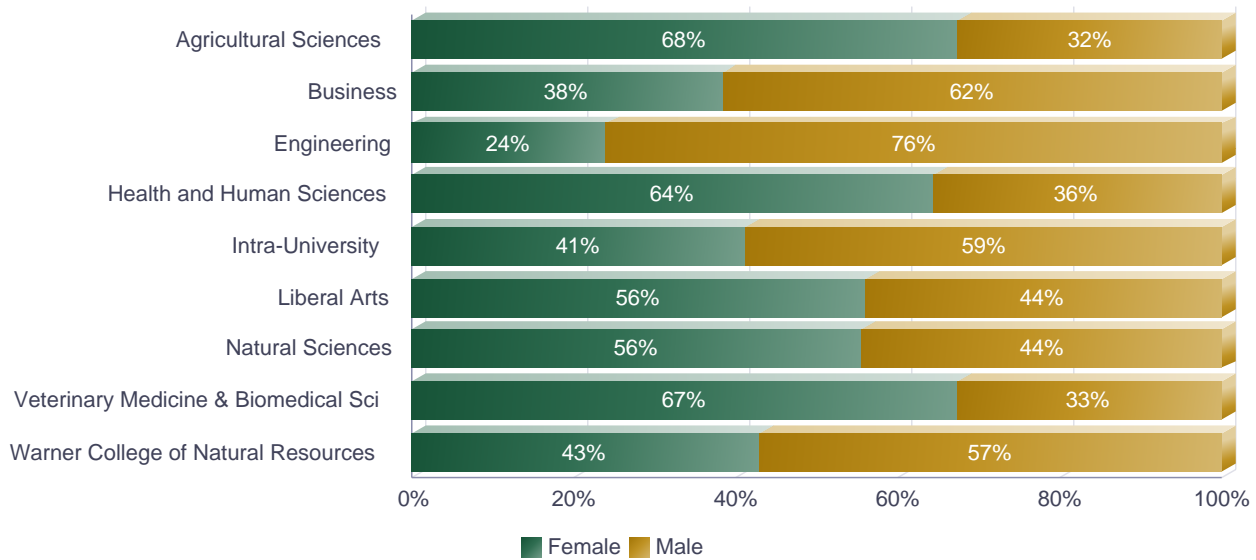
	2008	2009	2010	2011	2012	2013	2014	2015
Agricultural Sciences	1,610	1,591	1,697	1,735	1,748	1,702	1,809	1,833
Undergraduate	1,383	1,364	1,444	1,485	1,493	1,474	1,561	1,600
Graduate	227	227	253	250	255	228	248	233
Business	2,165	2,194	2,315	2,408	2,480	2,524	2,573	2,575
Undergraduate	1,983	1,982	2,075	2,154	2,236	2,262	2,258	2,279
Graduate	182	212	240	254	244	262	315	296
Engineering	2,030	2,171	2,370	2,507	2,687	2,952	3,045	3,333
Undergraduate	1,531	1,673	1,807	1,898	2,080	2,270	2,318	2,553
Graduate	499	498	563	609	607	682	727	780
Health and Human Sciences	5,891	5,980	5,984	5,888	5,526	5,299	5,363	5,193
Undergraduate	5,031	5,156	5,175	5,124	4,830	4,631	4,710	4,599
Graduate	860	824	809	764	696	668	653	594
Intra-University	2,976	3,062	3,260	2,961	3,088	3,028	3,045	3,094
Undergraduate	2,813	2,871	3,043	2,716	2,757	2,675	2,672	2,767
Graduate	163	191	217	245	331	353	373	327
Liberal Arts	5,907	5,945	6,052	6,165	5,968	5,687	5,342	5,194
Undergraduate	5,263	5,319	5,406	5,533	5,337	5,092	4,760	4,604
Graduate	644	626	646	632	631	595	582	590
Natural Sciences	3,761	3,805	3,941	4,218	4,359	4,540	4,457	4,514
Undergraduate	3,166	3,225	3,340	3,604	3,748	3,892	3,815	3,881
Graduate	595	580	601	614	611	648	642	633
Veterinary Medicine & Biomedical Sci	1,484	1,537	1,557	1,551	1,531	1,499	1,496	1,635
Undergraduate	626	639	656	637	668	640	647	727
Graduate	331	360	362	366	314	317	316	359
Professional	527	538	539	548	549	542	533	549
Warner College of Natural Resources	1,223	1,265	1,455	1,578	1,641	1,731	1,750	1,828
Undergraduate	1,009	1,067	1,230	1,369	1,402	1,484	1,505	1,587
Graduate	214	198	225	209	239	247	245	241
Total	27,047	27,550	28,631	29,011	29,028	28,962	28,880	29,199

* Data reflects RI students on campus as of the Census date of each Fall term.

Fall 2015 Undergraduate Enrollment by College and Gender - Number of Students by Primary Major

	Female	Male	Total
Agricultural Sciences	954	459	1,413
Business	845	1,355	2,200
Engineering	606	1,922	2,528
Health and Human Sciences	2,697	1,490	4,187
Intra-University	1,110	1,574	2,684
Liberal Arts	2,271	1,783	4,054
Natural Sciences	2,060	1,646	3,706
Veterinary Medicine & Biomedical Sci	479	232	711
Warner College of Natural Resources	655	871	1,526
Total	11,677	11,332	23,009

Fall 2015 Undergraduate Enrollment by College and Gender - Percent of Students

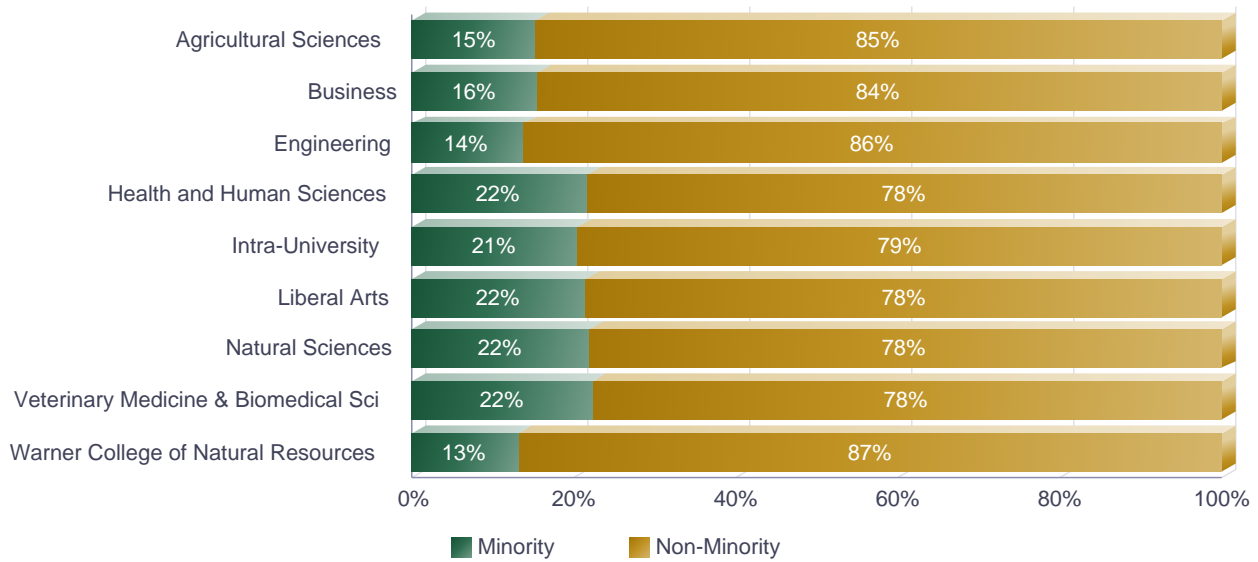


* Data reflects RI students on campus as of the Census date of each Fall term.

Fall 2015 Undergraduate Enrollment by College and Minority Status - Number of Students by Primary Major

	Minority	Non-Minority	Total
Agricultural Sciences	218	1,195	1,413
Business	341	1,859	2,200
Engineering	348	2,180	2,528
Health and Human Sciences	908	3,279	4,187
Intra-University	553	2,131	2,684
Liberal Arts	875	3,179	4,054
Natural Sciences	811	2,895	3,706
Veterinary Medicine & Biomedical Sci	159	552	711
Warner College of Natural Resources	202	1,324	1,526
Total	4,415	18,594	23,009

Fall 2015 Undergraduate Enrollment by College and Minority Status - Percent of Students

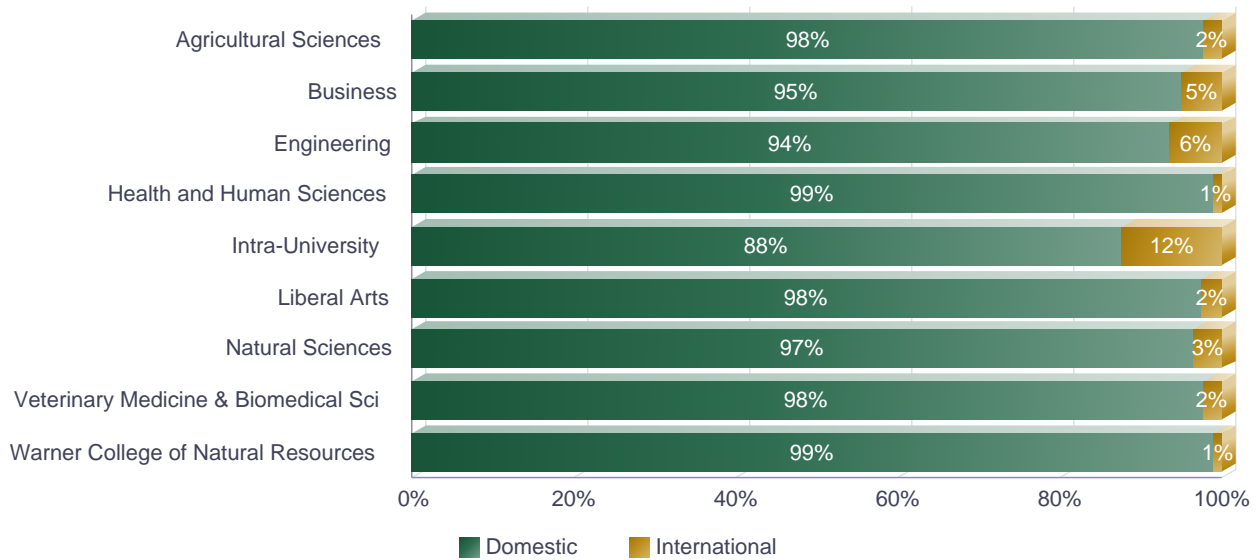


* Data reflects RI students on campus as of the Census date of each Fall term.

Fall 2015 Undergraduate Enrollment by College and International Status - Number of Students by Primary Major

	Domestic	International	Total
Agricultural Sciences	1,382	31	1,413
Business	2,092	108	2,200
Engineering	2,368	160	2,528
Health and Human Sciences	4,143	44	4,187
Intra-University	2,355	329	2,684
Liberal Arts	3,953	101	4,054
Natural Sciences	3,577	129	3,706
Veterinary Medicine & Biomedical Sci	695	16	711
Warner College of Natural Resources	1,512	14	1,526
Total	22,077	932	23,009

Fall 2015 Undergraduate Enrollment by College and International Status - Percent of Students

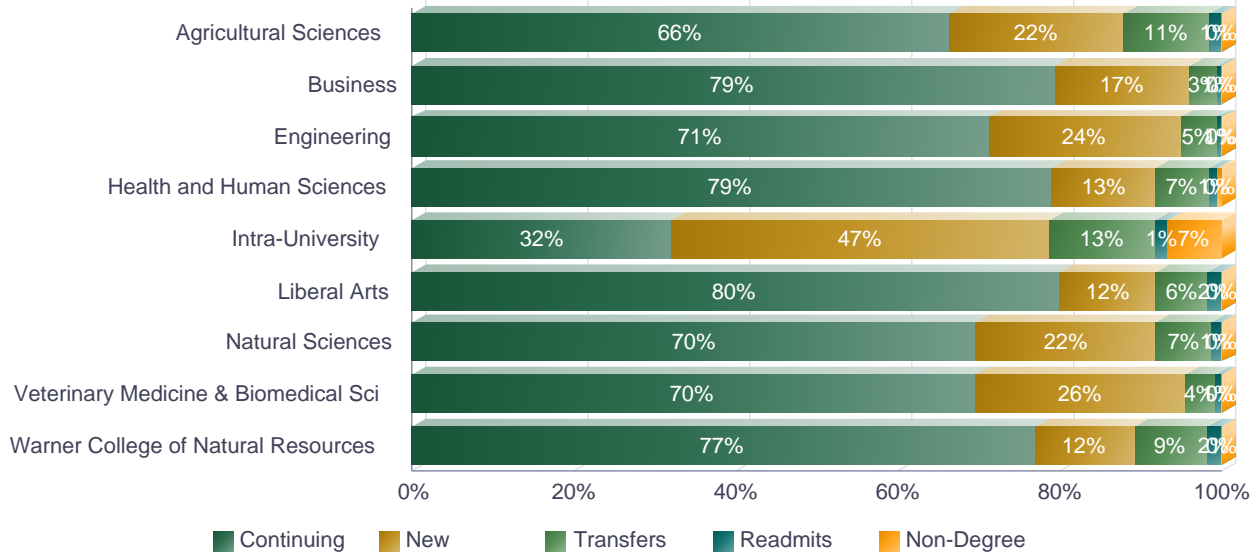


* Data reflects RI students on campus as of the Census date of each Fall term.

Fall 2015 Undergraduate Enrollment by College and Registration Type - Number of Students by Primary Major

	Continuing	New	Transfers	Readmits	Non-Degree	Total
Agricultural Sciences	938	305	149	21		1,413
Business	1,747	367	74	12		2,200
Engineering	1,801	599	115	13		2,528
Health and Human Sciences	3,308	541	280	40	18	4,187
Intra-University	863	1,250	355	34	182	2,684
Liberal Arts	3,242	484	262	66		4,054
Natural Sciences	2,585	819	256	46		3,706
Veterinary Medicine & Biomedical Sci	495	184	27	5		711
Warner College of Natural Resources	1,174	188	139	25		1,526
Total	16,153	4,737	1,657	262	200	23,009

Fall 2015 Undergraduate Enrollment by College and Registration Type - Percent of Students

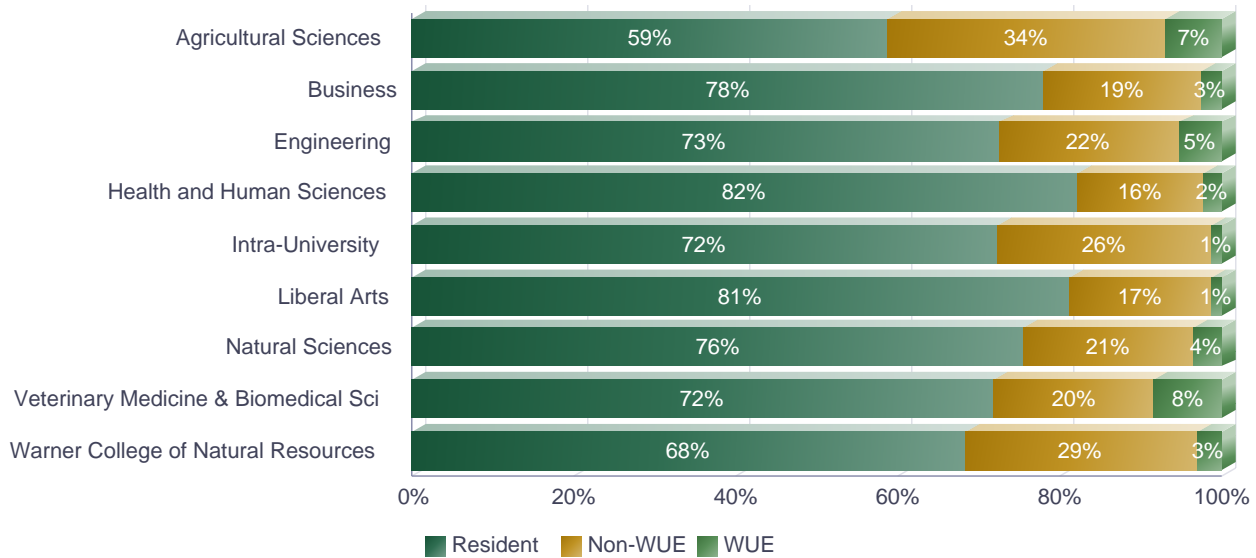


* Data reflects RI students on campus as of the Census date of each Fall term.

Fall 2015 Undergraduate Enrollment by College and Residency - Number of Students by Primary Major

	Resident	Non-WUE	WUE	Total
Agricultural Sciences	831	484	98	1,413
Business	1,717	427	56	2,200
Engineering	1,834	563	131	2,528
Health and Human Sciences	3,438	658	91	4,187
Intra-University	1,942	707	35	2,684
Liberal Arts	3,296	705	53	4,054
Natural Sciences	2,803	773	130	3,706
Veterinary Medicine & Biomedical Sci	511	141	59	711
Warner College of Natural Resources	1,042	437	47	1,526
Total	17,414	4,895	700	23,009

Fall 2015 Undergraduate Enrollment by College and Residency - Percent of Students

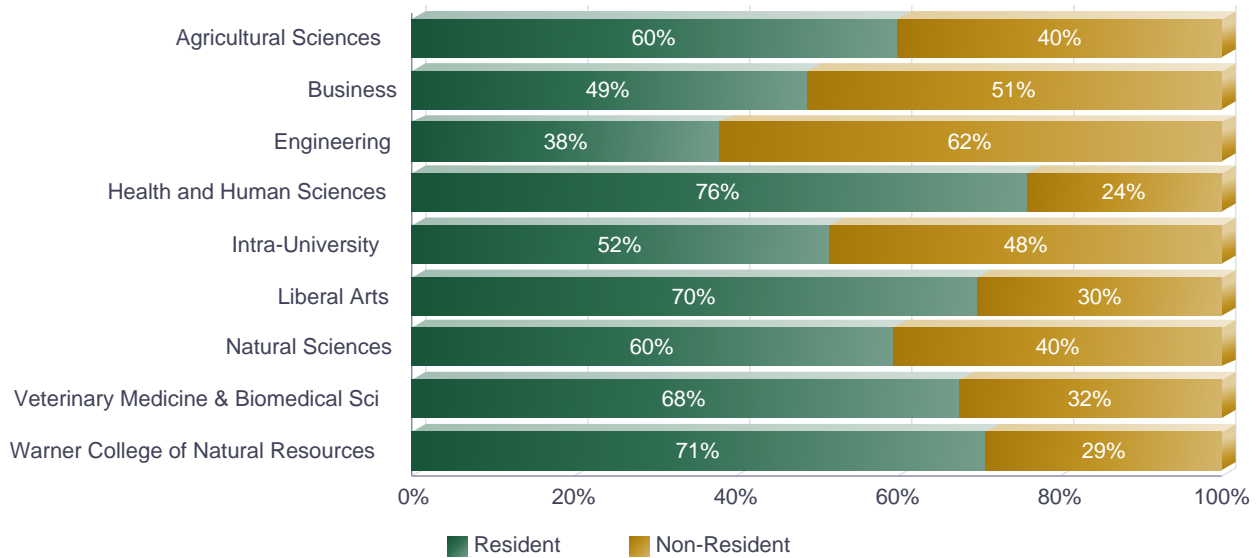


* Data reflects RI students on campus as of the Census date of each Fall term.

Fall 2015 Graduate Enrollment by College and Residency - Number of Students by Primary Major

	Resident	Non-Resident	Total
Agricultural Sciences	140	93	233
Business	144	151	295
Engineering	297	483	780
Health and Human Sciences	439	139	578
Intra-University	158	148	306
Liberal Arts	410	176	586
Natural Sciences	376	255	631
Veterinary Medicine & Biomedical Sci	242	116	358
Warner College of Natural Resources	171	70	241
Total	2,377	1,631	4,008

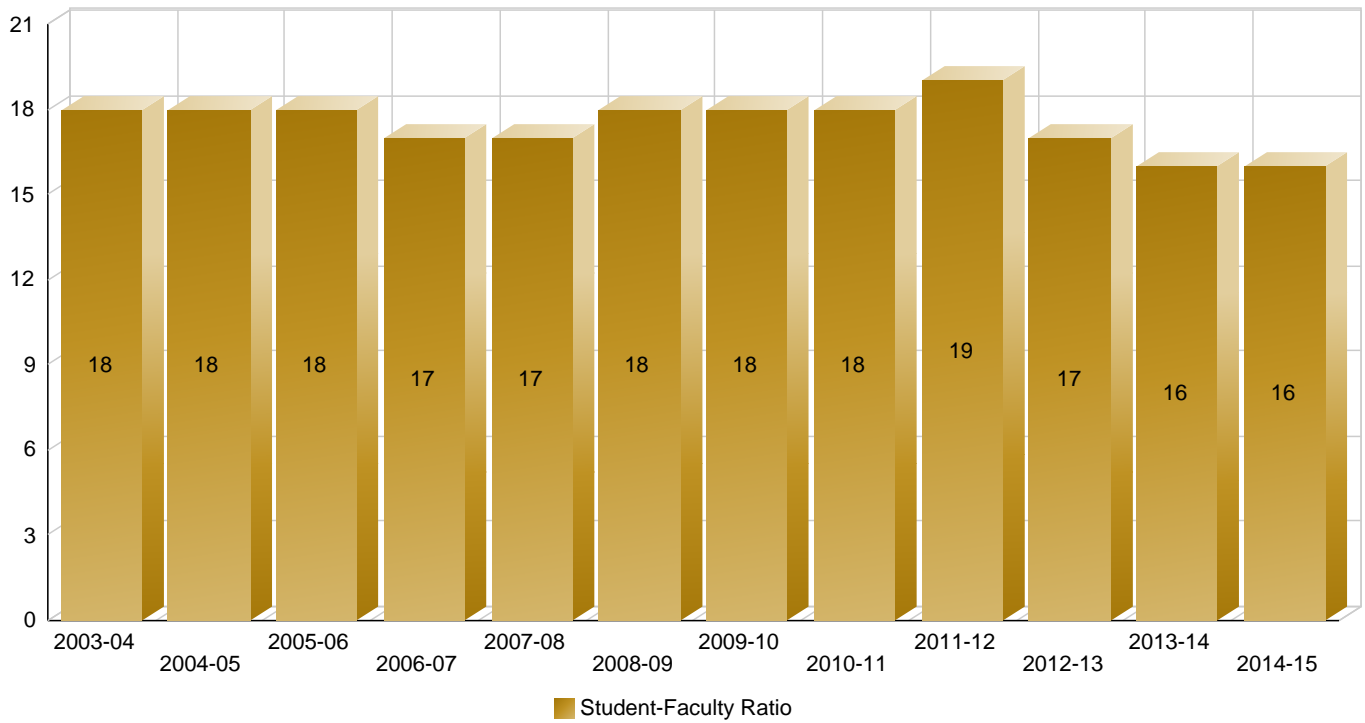
Fall 2015 Graduate Enrollment by College and Residency - Percent of Students



* Data reflects RI students on campus as of the Census date of each Fall term.

History of University Student-Faculty Ratio

Academic Year	Student Faculty Ratio
2003-04	18
2004-05	18
2005-06	18
2006-07	17
2007-08	17
2008-09	18
2009-10	18
2010-11	18
2011-12	19
2012-13	17
2013-14	16
2014-15	16



Entering Student Profile

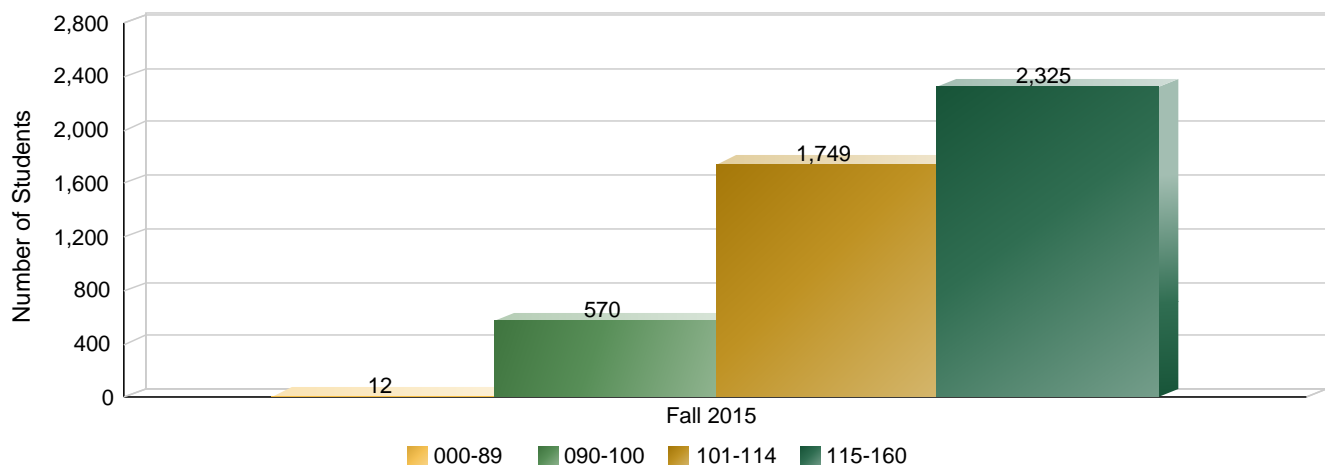
Fall Term Freshman Profile - Number of Students By Sub-Population

	2007	2008	2009	2010	2011	2012	2013	2014	2015
Female	2,402	2,439	2,364	2,492	2,500	2,522	2,427	2,390	2,510
Male	1,990	1,965	1,921	1,980	2,004	2,022	2,016	1,963	2,227
Full-Time	4,330	4,348	4,233	4,412	4,458	4,485	4,398	4,300	4,684
Part-Time	62	56	52	60	46	59	45	53	53
Resident	3,445	3,482	3,350	3,541	3,461	3,386	3,289	3,154	3,299
Non-Resident	947	922	935	931	1,043	1,158	1,154	1,199	1,438
Minority	640	600	666	738	852	872	912	896	1,020
Non-Minority	3,752	3,804	3,619	3,734	3,652	3,672	3,531	3,457	3,717
Pell Recipient	622	631	781	980	1,081	1,021	947	903	963
Not Pell Recipient	3,770	3,773	3,504	3,492	3,423	3,523	3,496	3,450	3,774
First Generation	1,117	1,064	1,054	1,038	1,160	1,187	1,068	1,034	1,225
Not First-Generation	3,275	3,340	3,231	3,434	3,344	3,357	3,375	3,319	3,512

Academic Preparation

	2007	2008	2009	2010	2011	2012	2013	2014	2015
High School Rank	71.6	71.9	72.5	73.4	73.8	72.7	72.8	71.5	69.9
High School GPA	3.5	3.5	3.6	3.6	3.6	3.6	3.6	3.6	3.6
ACT Composite	24.2	24.1	24.6	24.5	24.7	24.8	24.7	24.9	24.9
SAT Math	566.4	566.5	571.7	571.2	575.7	578.0	574.5	574.0	575.3
SAT Critical Thinking	554.8	555.3	559.4	563.1	566.5	565.5	566.2	568.7	566.5
CCHE Index	113.2	113.2	114.4	114.1	115.1	114.8	115.1	115.1	114.8

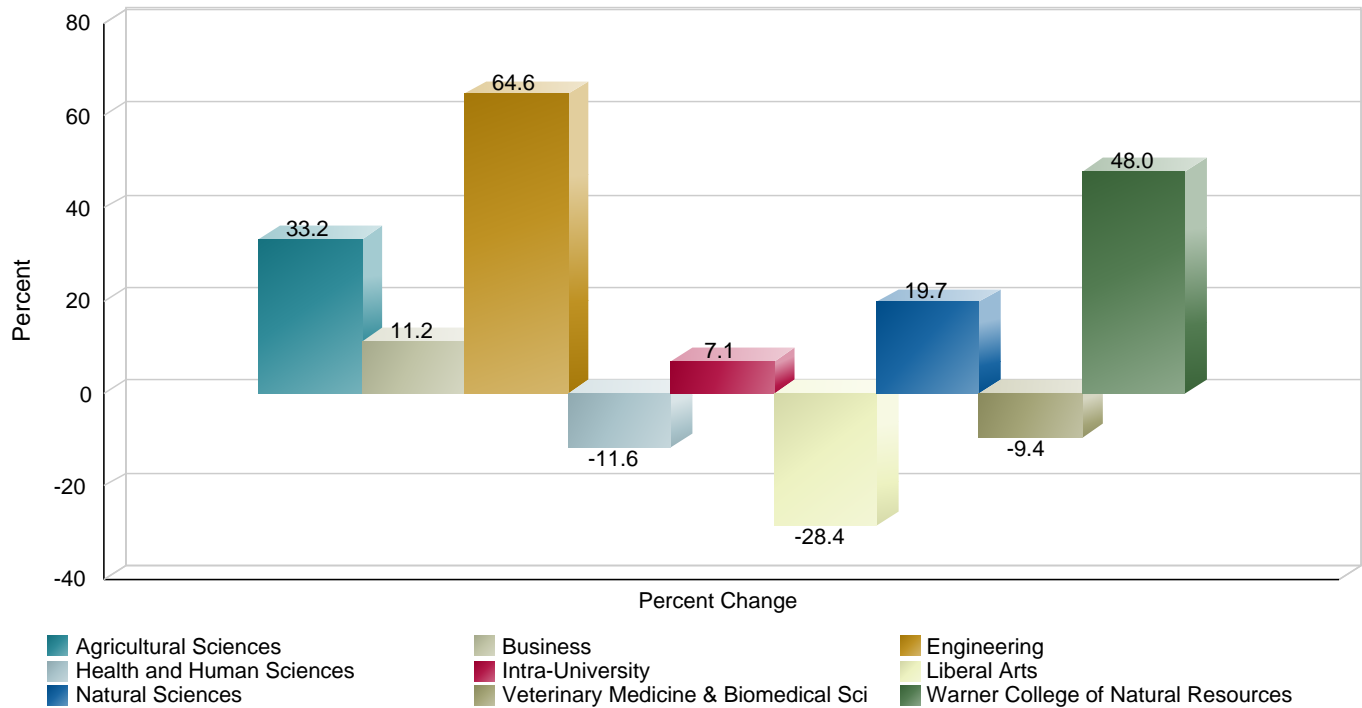
Fall 2015 CCHE Index Distribution



Fall Term New Freshman Enrollment History - By College

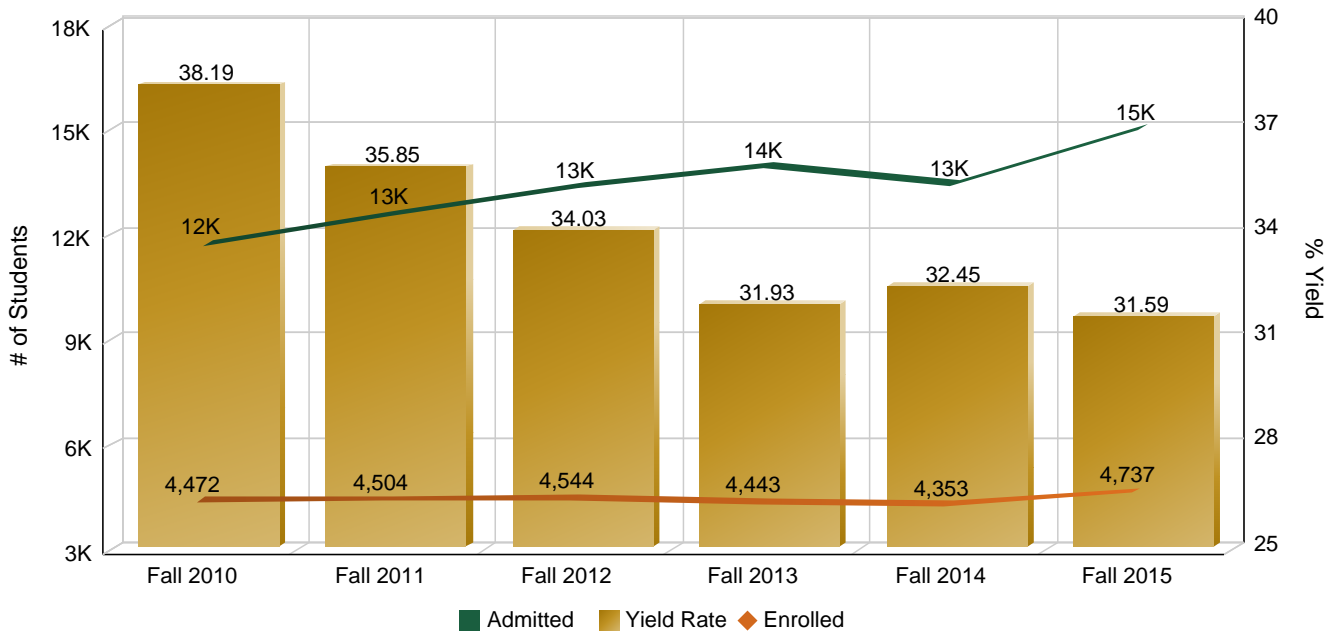
	2007	2008	2009	2010	2011	2012	2013	2014	2015
Agricultural Sciences	229	239	194	221	222	210	234	265	305
Business	330	350	300	337	379	311	343	324	367
Engineering	364	395	446	454	490	590	579	520	599
Health and Human Sciences	612	633	553	552	524	503	525	572	541
Intra-University	1,167	1,255	1,248	1,273	1,196	1,307	1,165	1,130	1,250
Liberal Arts	676	633	600	601	628	573	563	472	484
Natural Sciences	684	666	693	750	789	773	741	790	819
Veterinary Medicine & Biomedical Sci	203	129	140	126	126	132	121	116	184
Warner College of Natural Resources	127	104	111	158	150	145	172	164	188
Total	4,392	4,404	4,285	4,472	4,504	4,544	4,443	4,353	4,737

Fall 2007 to Fall 2015 Percent Change in New Freshman by College



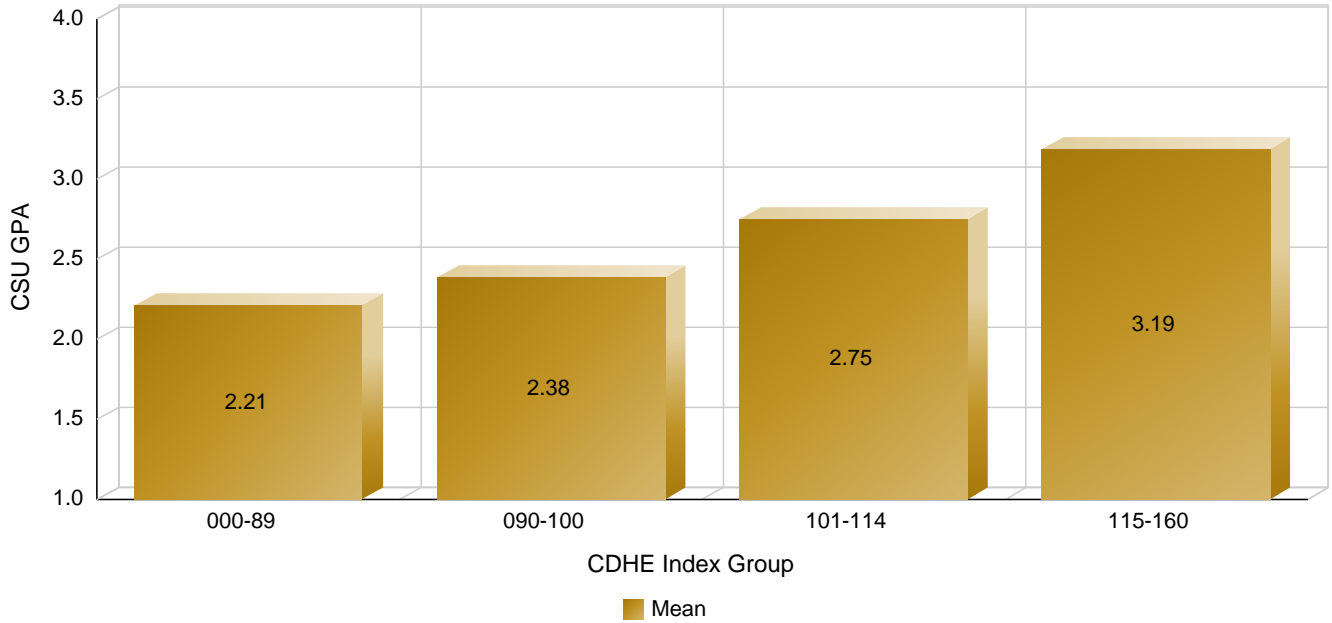
Fall Term New Freshman Yield Trends - Admitted to Enrolled

Term	Completed Applications	Admitted Students	Enrolled	Yield Rate
Fall 2010	14,496	11,709	4,472	38.2%
Fall 2011	16,562	12,565	4,504	35.8%
Fall 2012	17,886	13,351	4,544	34.0%
Fall 2013	17,975	13,916	4,443	31.9%
Fall 2014	16,521	13,416	4,353	32.4%
Fall 2015	18,556	14,997	4,737	31.6%

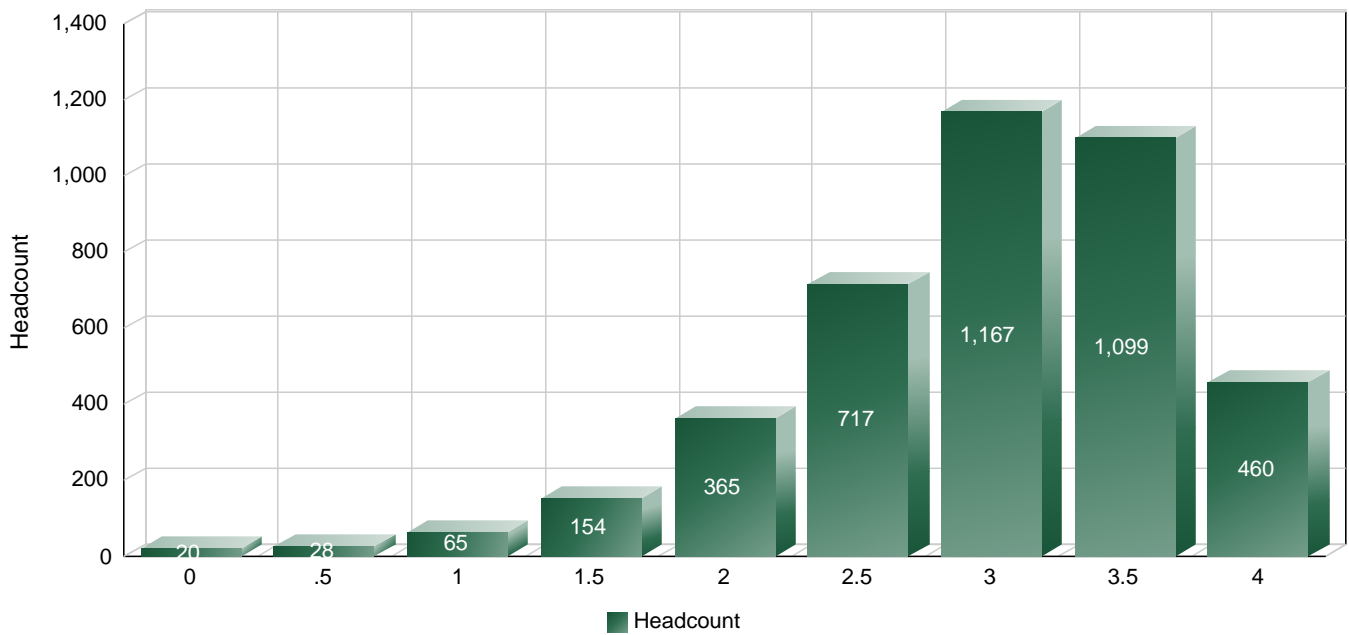


Fall Term New Freshman First-Year CSU Grade Point Average - Fall 2014 Entering Freshmen

First-Year CSU Grade Point Average and CDHE Index



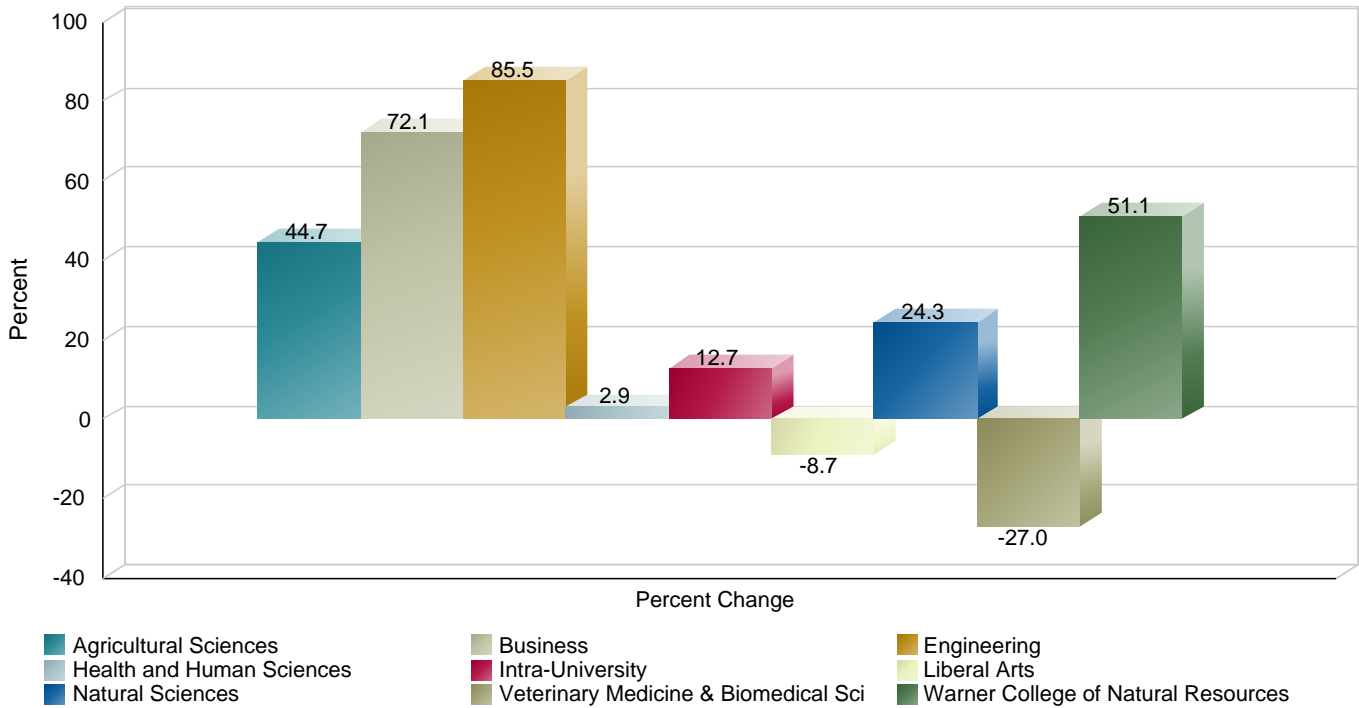
First-Year CSU GPA Distribution - Number of Students



Fall Term Transfer Undergraduate Enrollment History - By College (Primary Major)

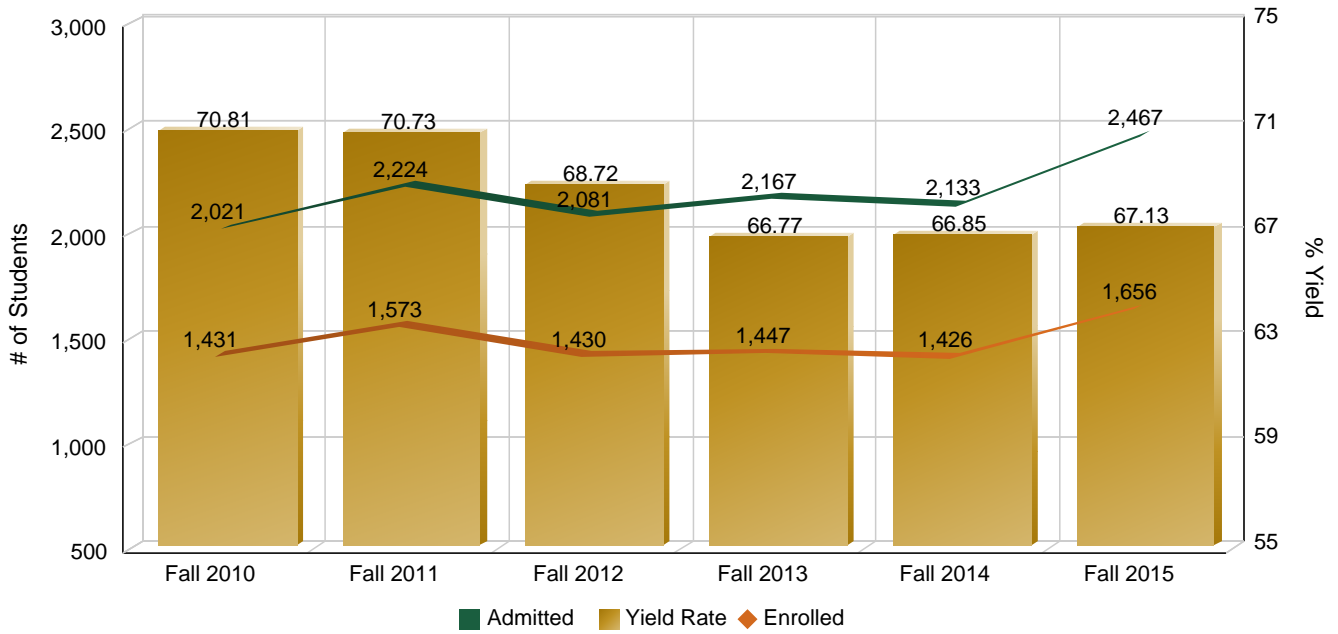
	2007	2008	2009	2010	2011	2012	2013	2014	2015
Agricultural Sciences	103	97	113	101	121	117	105	118	149
Business	43	38	50	62	78	58	70	72	74
Engineering	62	62	53	56	59	68	85	93	115
Health and Human Sciences	272	257	274	222	254	231	257	244	280
Intra-University	315	309	339	388	344	324	280	265	355
Liberal Arts	287	233	273	280	350	280	269	267	262
Natural Sciences	206	150	130	173	229	229	262	211	256
Veterinary Medicine & Biomedical Sci	37	23	27	26	15	26	21	36	27
Warner College of Natural Resources	92	80	94	114	123	96	98	120	139
Total	1,417	1,249	1,353	1,422	1,573	1,429	1,447	1,426	1,657

Fall 2007 to Fall 2015 Percent Change in Transfer Undergraduate by College



Fall Term Transfer Undergraduate Yield Trends - Admitted to Enrolled

Term	Completed Applications	Admitted Students	Enrolled	Yield Rate
Fall 2010	2,408	2,021	1,431	70.8%
Fall 2011	3,447	2,224	1,573	70.7%
Fall 2012	3,347	2,081	1,430	68.7%
Fall 2013	3,339	2,167	1,447	66.8%
Fall 2014	3,164	2,133	1,426	66.9%
Fall 2015	3,302	2,467	1,656	67.1%



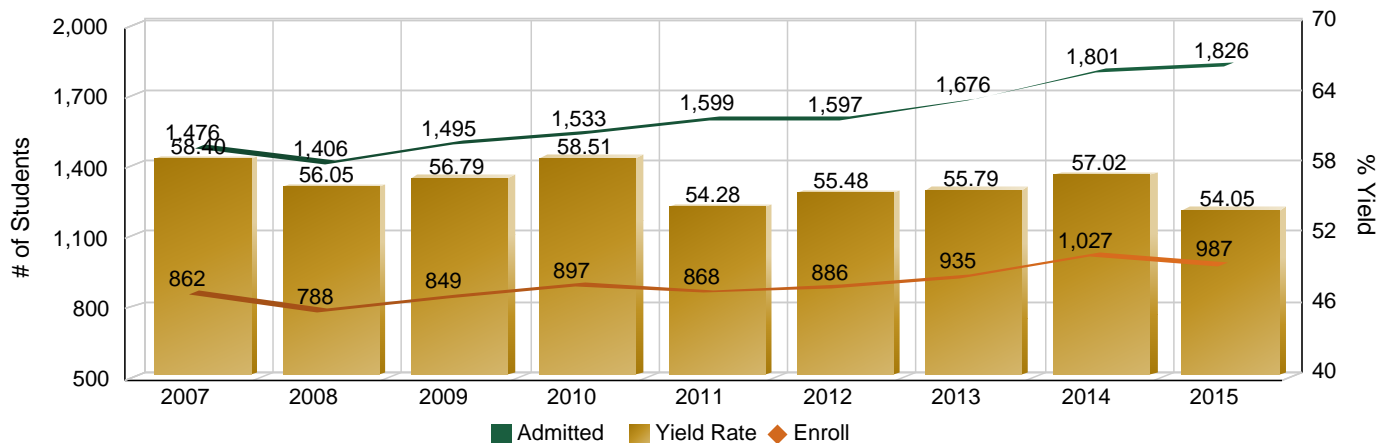
Fall Term New Graduate Profile - Number Students By Sub-Population

		2007	2008	2009	2010	2011	2012	2013	2014	2015
Male	Doctorate	120	147	106	141	129	98	121	126	106
	Masters	362	327	371	424	377	364	443	491	449
Female	Doctorate	97	95	99	92	100	99	92	79	81
	Masters	500	461	478	473	491	522	492	536	538
International	Masters	90	62	68	111	106	127	176	224	238
	Doctorate	44	45	53	54	53	44	40	42	46
Domestic	Doctorate	173	197	152	179	176	153	173	163	141
	Masters	772	726	781	786	762	759	759	803	749
Resident	Doctorate	69	64	58	57	53	43	62	38	44
	Masters	453	435	483	463	434	454	429	448	405
Non-Resident	Doctorate	148	178	147	176	176	154	151	167	143
	Masters	409	353	366	434	434	432	506	579	582
Minority	Doctorate	25	32	20	30	21	12	21	24	16
	Masters	74	94	87	93	97	91	97	114	115
Non-Minority	Doctorate	192	210	185	203	208	185	192	181	171
	Masters	788	694	762	804	771	795	838	913	872

Academic Preparation

		2007	2008	2009	2010	2011	2012	2013	2014	2015
GRE Verbal (old scale)	Doctorate	517	502	503	524	509	523	533	544	535
	Masters	502	497	500	496	499	522	521	521	510
GRE Quantitative (old scale)	Doctorate	674	672	670	682	689	695	666	681	680
	Masters	616	606	615	621	636	644	651	673	633
GRE Verbal	Doctorate						155	155	156	155
	Masters						155	154	154	154
GRE Quantitative	Doctorate						156	157	157	157
	Masters						153	154	155	155

New Masters Student Yield Trends



Student Credit Hours and FTE

**Academic Year Student Credit Hour Production by Credit College, and Course Level
(Including Course Credit Reassignment)**

		AY0708	AY0809	AY0910	AY1011	AY1112	AY1213	AY1314	AY1415
Agricultural Sciences	Graduate	2,575.7	3,248.3	3,182.8	3,355.3	3,500.0	3,417.2	3,072.0	3,080.9
	Undergraduate	26,697.8	26,924.2	27,160.4	27,967.9	30,400.0	30,304.0	31,302.2	30,443.2
	College Total	29,273.5	30,172.5	30,343.2	31,323.2	33,900.0	33,721.2	34,374.2	33,524.1
Business	Graduate	2,550.5	3,169.0	3,899.0	4,417.0	4,911.0	5,180.0	5,659.0	7,006.0
	Undergraduate	48,295.0	52,188.0	54,975.5	55,996.0	57,842.0	58,683.0	60,886.0	62,888.0
	College Total	50,845.5	55,357.0	58,874.5	60,413.0	62,753.0	63,863.0	66,545.0	69,894.0
Engineering	Graduate	6,699.1	7,232.3	7,323.1	8,518.2	8,348.4	8,368.3	9,148.2	9,967.7
	Undergraduate	19,807.6	19,373.3	20,688.0	23,044.0	23,547.2	24,770.5	28,583.0	31,563.9
	College Total	26,506.7	26,605.6	28,011.1	31,562.2	31,895.6	33,138.8	37,731.2	41,531.6
Health and Human Sciences	Graduate	12,292.0	12,483.0	12,501.2	12,314.5	10,877.2	10,584.5	10,234.0	10,092.0
	Undergraduate	73,660.0	74,926.0	73,521.5	72,047.0	68,468.0	68,672.0	67,937.0	69,393.5
	College Total	85,952.0	87,409.0	86,022.7	84,361.5	79,345.2	79,256.5	78,171.0	79,485.5
Intra-University	Graduate	193.7	417.4	313.1	409.8	340.1	403.0	297.9	270.2
	Undergraduate	5,543.0	6,608.0	7,483.0	8,296.5	8,108.0	9,355.5	10,883.0	12,669.5
	College Total	5,736.7	7,025.4	7,796.1	8,706.3	8,448.1	9,758.5	11,180.9	12,939.7
Liberal Arts	Graduate	7,091.5	7,735.1	7,774.2	8,369.5	8,199.0	7,639.0	7,500.6	7,516.7
	Undergraduate	200,039.4	201,400.1	207,610.7	215,368.0	213,960.5	213,018.5	203,761.0	194,605.0
	College Total	207,130.9	209,135.2	215,384.9	223,737.5	222,159.5	220,657.5	211,261.6	202,121.7
Natural Sciences	Graduate	11,309.6	10,310.7	10,463.2	10,723.1	10,708.1	11,113.3	11,060.5	11,779.9
	Undergraduate	141,915.5	139,146.3	139,733.0	144,137.0	151,379.5	154,767.5	159,427.1	156,506.6
	College Total	153,225.1	149,457.0	150,196.2	154,860.1	162,087.6	165,880.8	170,487.6	168,286.5
Veterinary Medicine & Biomedical Sci	Graduate	27,455.7	26,914.7	28,593.8	29,183.0	29,470.3	28,186.7	28,230.3	28,231.4
	Undergraduate	20,299.6	19,433.1	20,548.9	21,119.6	22,294.3	22,162.9	21,008.7	21,653.8
	College Total	47,755.3	46,347.8	49,142.7	50,302.6	51,764.6	50,349.6	49,239.0	49,885.2
Warner College of Natural Resources	Graduate	2,480.1	2,463.5	2,679.5	3,105.5	2,918.0	3,233.2	3,526.5	3,292.0
	Undergraduate	22,488.0	23,090.0	23,786.5	24,418.0	25,680.5	26,693.5	25,695.0	27,898.5
	College Total	24,968.1	25,553.5	26,466.0	27,523.5	28,598.5	29,926.7	29,221.5	31,190.5
University Total		631,393.8	637,063.0	652,237.4	672,789.9	680,952.1	686,552.6	688,212.0	688,858.8

* Academic year excludes summer terms

**History of Academic Year FTE Production by Credit College, and Course Level
(Including Course Credit Reassignment)**

		AY0708	AY0809	AY0910	AY1011	AY1112	AY1213	AY1314	AY1415
Agricultural Sciences	Graduate	85.9	108.3	106.1	111.8	116.7	113.9	102.4	102.7
	Undergraduate	889.9	897.5	905.3	932.3	1,013.3	1,010.1	1,043.4	1,014.8
	College Total	975.8	1,005.8	1,011.4	1,044.1	1,130.0	1,124.0	1,145.8	1,117.5
Business	Graduate	85.0	105.6	130.0	147.2	163.7	172.7	188.6	233.5
	Undergraduate	1,609.8	1,739.6	1,832.5	1,866.5	1,928.1	1,956.1	2,029.5	2,096.3
	College Total	1,694.8	1,845.2	1,962.5	2,013.7	2,091.8	2,128.8	2,218.1	2,329.8
Engineering	Graduate	223.3	241.1	244.1	283.9	278.3	278.9	304.9	332.3
	Undergraduate	660.3	645.8	689.6	768.1	784.9	825.7	952.8	1,052.1
	College Total	883.6	886.9	933.7	1,052.0	1,063.2	1,104.6	1,257.7	1,384.4
Health and Human Sciences	Graduate	409.7	416.1	416.7	410.5	362.6	352.8	341.1	336.4
	Undergraduate	2,455.3	2,497.5	2,450.7	2,401.6	2,282.3	2,289.1	2,264.6	2,313.1
	College Total	2,865.0	2,913.6	2,867.4	2,812.1	2,644.9	2,641.9	2,605.7	2,649.5
Intra-University	Graduate	6.5	13.9	10.4	13.7	11.3	13.4	9.9	9.0
	Undergraduate	184.8	220.3	249.4	276.6	270.3	311.9	362.8	422.3
	College Total	191.3	234.2	259.8	290.3	281.6	325.3	372.7	431.3
Liberal Arts	Graduate	236.4	257.8	259.1	279.0	273.3	254.6	250.0	250.6
	Undergraduate	6,668.0	6,713.3	6,920.4	7,178.9	7,132.0	7,100.6	6,792.0	6,486.8
	College Total	6,904.4	6,971.1	7,179.5	7,457.9	7,405.3	7,355.2	7,042.0	6,737.4
Natural Sciences	Graduate	377.0	343.7	348.8	357.4	356.9	370.4	368.7	392.7
	Undergraduate	4,730.5	4,638.2	4,657.8	4,804.6	5,046.0	5,158.9	5,314.2	5,216.9
	College Total	5,107.5	4,981.9	5,006.6	5,162.0	5,402.9	5,529.3	5,682.9	5,609.6
Veterinary Medicine & Biomedical Sci	Graduate	915.2	897.2	953.1	972.8	982.3	939.6	941.0	941.0
	Undergraduate	676.7	647.8	685.0	704.0	743.1	738.8	700.3	721.8
	College Total	1,591.9	1,545.0	1,638.1	1,676.8	1,725.4	1,678.4	1,641.3	1,662.8
Warner College of Natural Resources	Graduate	82.7	82.1	89.3	103.5	97.3	107.8	117.6	109.7
	Undergraduate	749.6	769.7	792.9	813.9	856.0	889.8	856.5	930.0
	College Total	832.3	851.8	882.2	917.4	953.3	997.6	974.1	1,039.7
University Total		21,046.6	21,235.5	21,741.2	22,426.3	22,698.4	22,885.1	22,940.3	22,962.0

* Academic year excludes summer terms

History of Total Credits Produced by College for Undergraduate Students

	AY0708	AY0809	AY0910	AY1011	AY1112	AY1213	AY1314	AY1415
Agricultural Sciences	24,634	23,961	23,779	24,537	26,705	26,540	26,717	26,813
Business	47,590	51,634	54,232	55,678	57,548	58,798	60,878	62,848
Engineering	20,415	20,194	21,099	23,534	24,521	25,782	29,145	32,268
Health and Human Sciences	72,625	74,065	72,481	72,012	68,306	68,009	67,892	69,687
Intra-University	8,667	10,378	22,515	24,306	25,906	26,299	26,946	27,605
Liberal Arts	197,309	198,488	205,738	212,772	212,206	211,245	202,449	194,558
Natural Sciences	143,707	141,018	131,472	134,510	139,848	143,922	147,303	143,824
Veterinary Medicine & Biomedical Sci	18,492	17,356	18,455	19,105	20,020	19,752	19,100	19,707
Warner College of Natural Resources	22,622	23,766	22,700	23,477	24,532	25,999	26,056	27,163
University Total	556,061	560,860	572,472	589,931	599,592	606,346	606,486	604,473

History of Undergraduate Service Load - Percent of Total

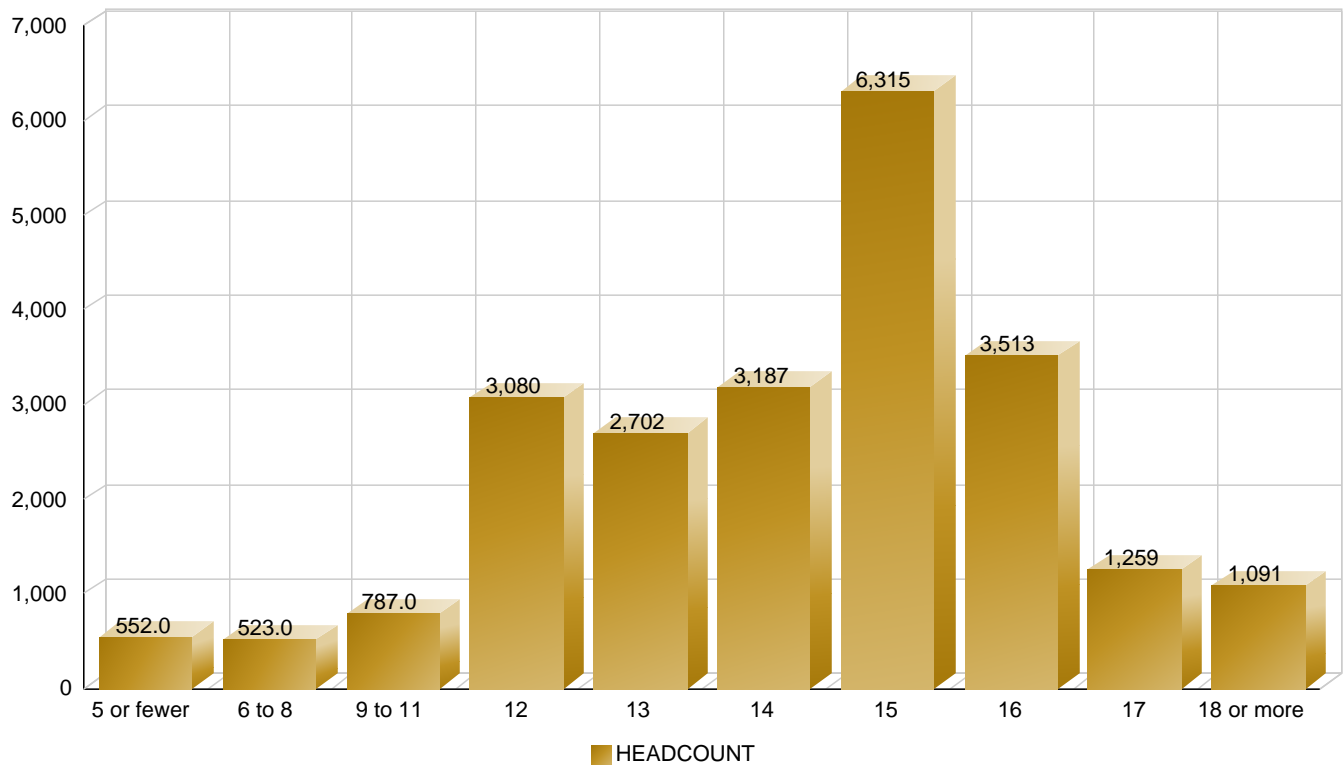
	AY0708	AY0809	AY0910	AY1011	AY1112	AY1213	AY1314	AY1415
Agricultural Sciences	29%	29%	31%	31%	32%	33%	33%	34%
Business	36%	37%	38%	37%	37%	36%	35%	35%
Engineering	8%	6%	4%	4%	4%	3%	3%	5%
Health and Human Sciences	24%	25%	23%	23%	22%	23%	21%	19%
Intra-University	86%	88%	85%	86%	89%	88%	88%	87%
Liberal Arts	50%	50%	51%	52%	51%	53%	54%	54%
Natural Sciences	64%	65%	65%	65%	64%	63%	62%	61%
Veterinary Medicine & Biomedical Sci	68%	63%	65%	65%	66%	66%	67%	66%
Warner College of Natural Resources	50%	52%	48%	43%	42%	40%	37%	38%
University Total	48%	48%	48%	49%	48%	49%	48%	48%

* Academic year excludes summer terms

Fall 2015 Undergraduate Students by College and Credit Load

	5 or fewer	6 to 8	9 to 11	12	13	14	15	16	17	18 or more
Agricultural Sciences	29	37	46	158	156	263	265	244	111	104
Business	27	20	43	329	176	102	874	415	77	137
Engineering	51	53	77	241	368	425	637	379	202	95
Health and Human Sciences	105	88	137	565	535	596	1,106	663	203	189
Intra-University	51	48	92	410	295	451	868	353	86	30
Liberal Arts	113	104	156	716	332	288	1,375	529	159	282
Natural Sciences	110	109	152	415	513	679	770	568	244	146
Veterinary Medicine & Biomedical Sci	16	15	20	62	78	130	137	127	81	45
Warner College of Natural Resources	50	49	64	184	249	253	283	235	96	63
University Total	552	523	787	3,080	2,702	3,187	6,315	3,513	1,259	1,091

Fall 2015 Undergraduate Students by Credit Load



History of Undergraduate Credit Hours Taught by Tenure-Track Faculty

	2008	2009	2010	2011	2012	2013	2014	2015
Agricultural Sciences	78%	76%	76%	79%	69%	75%	71%	70%
Business	37%	48%	52%	50%	47%	47%	41%	38%
Engineering	76%	79%	82%	79%	66%	72%	69%	63%
Health and Human Sciences	42%	47%	49%	45%	34%	34%	36%	33%
Intra-University	26%	29%	38%	38%	29%	35%	29%	23%
Liberal Arts	38%	35%	38%	35%	26%	27%	24%	28%
Natural Sciences	37%	38%	45%	41%	38%	38%	35%	31%
Veterinary Medicine & Biomedical Sci	66%	68%	68%	67%	62%	65%	71%	76%
Warner College of Natural Resources	75%	73%	71%	73%	54%	61%	49%	45%
University Summary	44%	44%	48%	45%	38%	40%	37%	36%

Undergraduate Credit Hours Taught By Tenure-Track Faculty
Percent Change between Academic Year 2008 and 2015

