

Student Highlights

Total headcount enrollment: 24,735

Five undergraduate programs with the largest number of majors: University Open Option, Open Option Seeking Business, Psychology, Health and Exercise Science and Biological Science

Five graduate programs with the largest number of majors: Education & Human Resource Studies, Electrical Engineering, Civil Engineering, Computer Science and Chemistry

Five home states for the largest number of nonresident students: Texas, Illinois, California, New Mexico and Nebraska

Total new freshmen enrolled: 3,829

Total new transfer students: 1,791

Total new undergraduates enrolled: 5,620

College with the most new undergraduates: Natural Sciences with 894
(Intra-University had 1,726 new undergraduates)

Percent of transfer students previously enrolled in Colorado public institutions: 60%

Percent of students who are residents: 78%

Percent of student population (excluding international students) who are ethnic minorities: 11.8%

Percent of undergraduate student population who are women: 52%

Percent of undergraduate students who are 30 and over: 4%

Although 18,531 undergraduates were taking 12 or more credit hours and were considered full-time for financial aid purposes, only 10,337 undergraduates were taking 15 or more credit hours, which is the number required for graduation in four years.

Percent of undergraduate student population who were enrolled part time: 10%

Total student credit hour production for the academic year 2001-02: 609,136.3

Total student full-time equivalent (FTE) for the academic year 2001-02: 20,304.5

College with the highest average undergraduate term GPA for fall 2001: Business with 3.09

Number of degrees awarded in 2001-02: 5,121

Percentage of undergraduate classes with fewer than 20 students: 40%

Percentage of undergraduate classes with more than 50 students: 18%

Note: Student highlights are for fall term 2002 (unless otherwise noted).

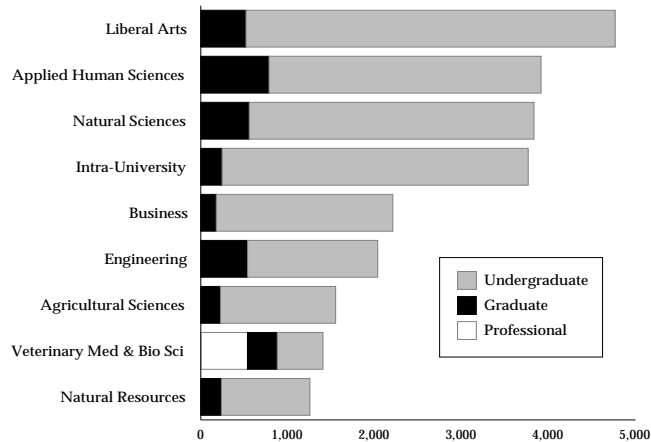
Student Majors

College Majors by Class

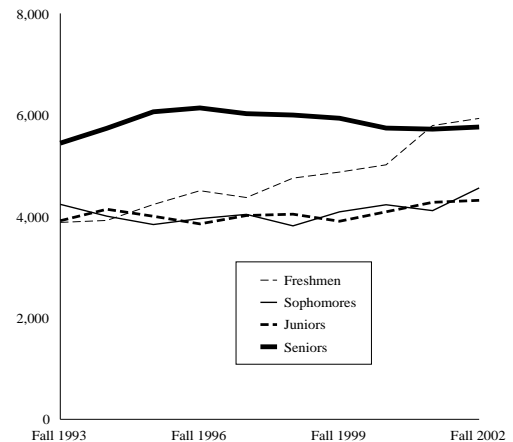
| | Freshmen | Sophomores | Juniors | Seniors | Total Under-graduates | Total Graduates | Total |
|--------------------------|----------|------------|---------|---------|-----------------------|-----------------|--------|
| Agricultural Sciences | 252 | 292 | 354 | 426 | 1,324 | 227 | 1,551 |
| Applied Human Sciences | 689 | 649 | 677 | 1,114 | 3,129 | 785 | 3,914 |
| Business | 370 | 438 | 541 | 682 | 2,031 | 178 | 2,209 |
| Engineering | 368 | 305 | 291 | 533 | 1,497 | 538 | 2,035 |
| Intra-University | 2,064 | 942 | 349 | 166 | 3,521 | 245 | 3,766 |
| Liberal Arts | 860 | 874 | 1,079 | 1,434 | 4,247 | 520 | 4,767 |
| Natural Resources | 190 | 200 | 254 | 374 | 1,018 | 237 | 1,255 |
| Natural Sciences | 933 | 751 | 675 | 917 | 3,276 | 557 | 3,833 |
| Veterinary Med & Bio Sci | 205 | 109 | 96 | 115 | 525 | 880 | 1,405 |
| University Summary | 5,931 | 4,560 | 4,316 | 5,761 | 20,568 | 4,167 | 24,735 |

Note: The graduate and total numbers for Veterinary Medicine & Biomedical Sciences and the university summary include 528 Professional Veterinary Medicine students.

Student Majors by College

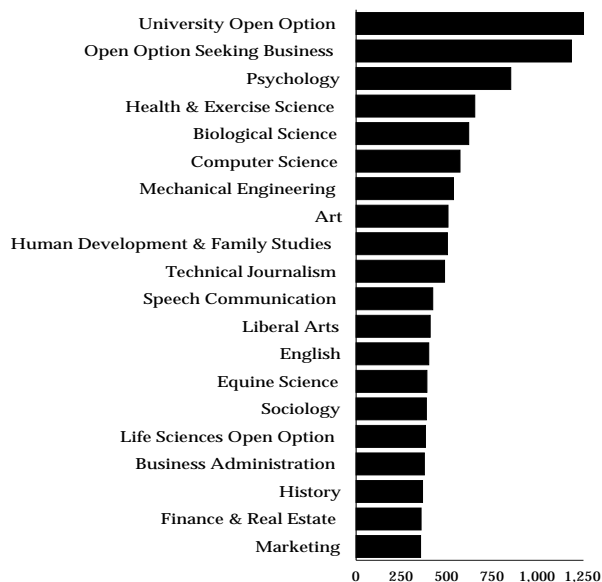


Students by Class

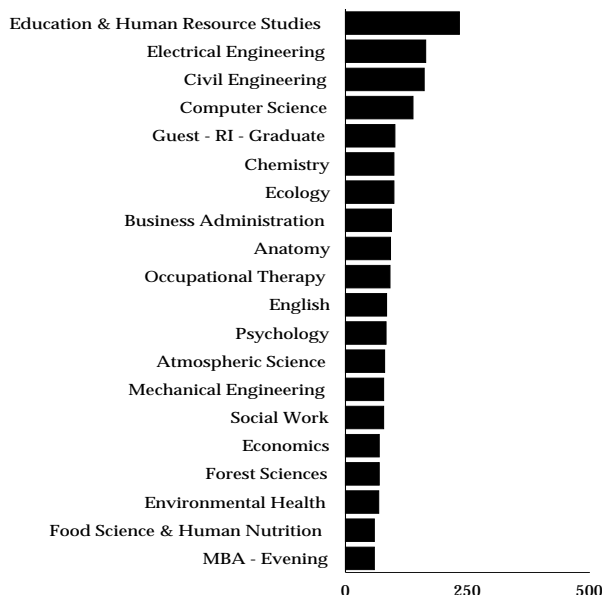


Student Majors

Twenty Most Popular Undergraduate Majors



Twenty Most Popular Graduate Majors



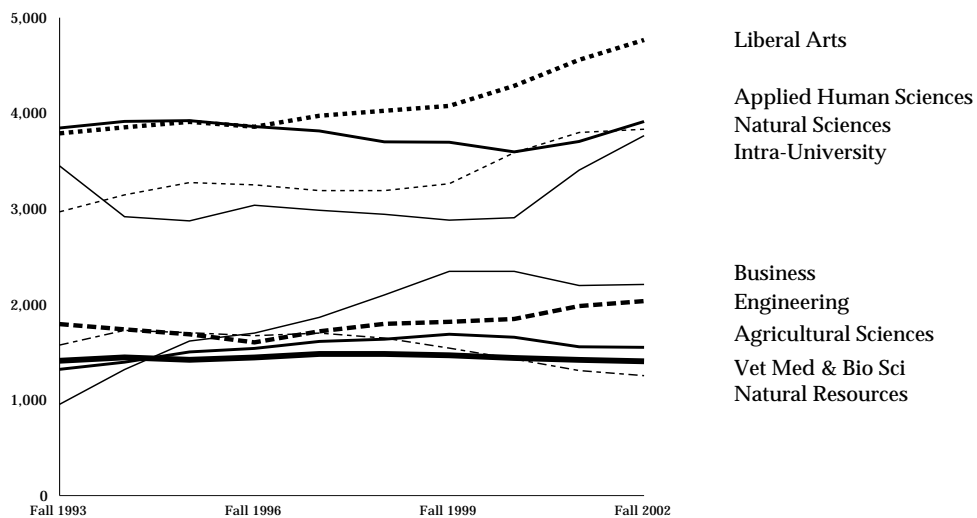
Note: If all undergraduate concentrations in the College of Business were added together, Business would be the largest major with 2,031 students.

Student Majors

Five-Year History of College Majors

| | Fall 1998 | Fall 1999 | Fall 2000 | Fall 2001 | Fall 2002 | Five-Year Change |
|--------------------------|-----------|-----------|-----------|-----------|-----------|------------------|
| Agricultural Sciences | 1,636 | 1,688 | 1,657 | 1,557 | 1,551 | -5.2% |
| Applied Human Sciences | 3,701 | 3,697 | 3,596 | 3,705 | 3,914 | 5.8% |
| Business | 2,099 | 2,346 | 2,346 | 2,198 | 2,209 | 5.2% |
| Engineering | 1,797 | 1,818 | 1,848 | 1,983 | 2,035 | 13.2% |
| Intra-University | 2,943 | 2,882 | 2,907 | 3,405 | 3,766 | 28.0% |
| Liberal Arts | 4,026 | 4,077 | 4,287 | 4,559 | 4,767 | 18.4% |
| Natural Resources | 1,648 | 1,543 | 1,429 | 1,308 | 1,255 | -23.8% |
| Natural Sciences | 3,191 | 3,263 | 3,588 | 3,799 | 3,833 | 20.1% |
| Veterinary Med & Bio Sci | 1,482 | 1,468 | 1,440 | 1,420 | 1,405 | -5.2% |
| University Summary | 22,523 | 22,782 | 23,098 | 23,934 | 24,735 | 9.8% |

Ten-Year History of College Majors



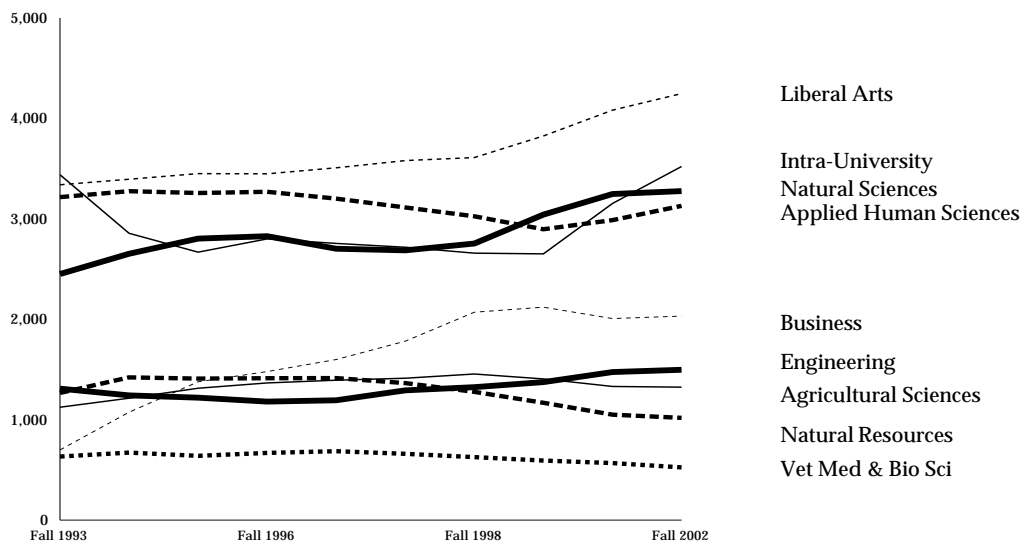
Note: PVM is included in numbers for Veterinary Med & Bio Sci.

Student Majors

Five-Year History of Undergraduate Majors

| | Fall 1998 | Fall 1999 | Fall 2000 | Fall 2001 | Fall 2002 | Five-Year Change |
|--------------------------|-----------|-----------|-----------|-----------|-----------|------------------|
| Agricultural Sciences | 1,413 | 1,455 | 1,406 | 1,331 | 1,324 | -6.3% |
| Applied Human Sciences | 3,113 | 3,025 | 2,896 | 2,987 | 3,129 | 0.5% |
| Business | 1,782 | 2,070 | 2,120 | 2,007 | 2,031 | 14.0% |
| Engineering | 1,292 | 1,324 | 1,374 | 1,474 | 1,497 | 15.9% |
| Intra-University | 2,717 | 2,658 | 2,651 | 3,153 | 3,521 | 29.6% |
| Liberal Arts | 3,580 | 3,610 | 3,825 | 4,082 | 4,247 | 18.6% |
| Natural Resources | 1,364 | 1,277 | 1,168 | 1,050 | 1,018 | -25.4% |
| Natural Sciences | 2,686 | 2,754 | 3,042 | 3,247 | 3,276 | 22.0% |
| Veterinary Med & Bio Sci | 660 | 627 | 593 | 568 | 525 | -20.5% |
| University Summary | 18,607 | 18,800 | 19,075 | 19,899 | 20,568 | 10.5% |

Ten-Year History of Undergraduate Majors by College

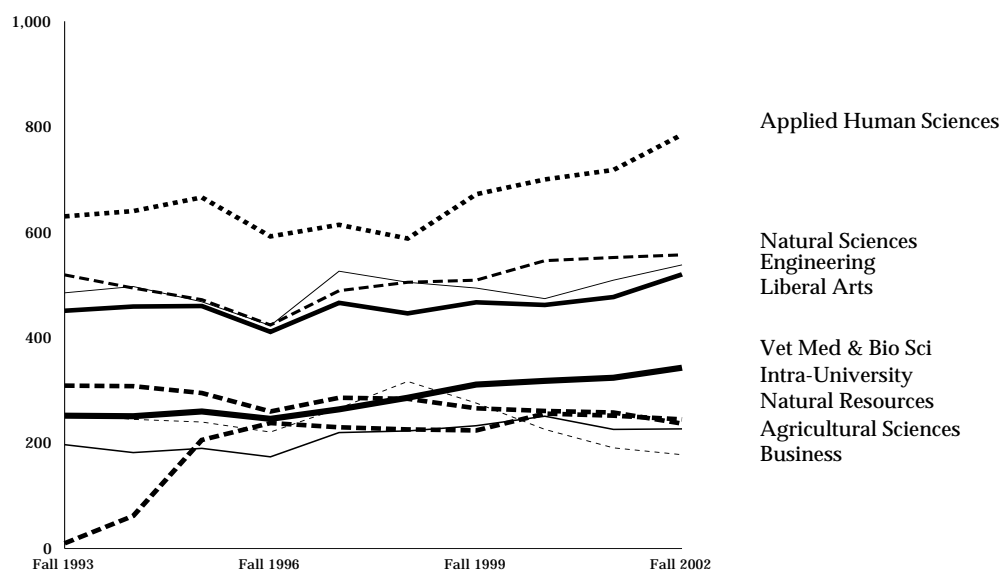


Student Majors

Five-Year History of Graduate Majors

| | Fall 1998 | Fall 1999 | Fall 2000 | Fall 2001 | Fall 2002 | Five-Year Change |
|--------------------------|-----------|-----------|-----------|-----------|-----------|------------------|
| Agricultural Sciences | 223 | 233 | 251 | 226 | 227 | 1.8% |
| Applied Human Sciences | 588 | 672 | 700 | 718 | 785 | 33.5% |
| Business | 317 | 276 | 226 | 191 | 178 | -43.8% |
| Engineering | 505 | 494 | 474 | 509 | 538 | 6.5% |
| Intra-University | 226 | 224 | 256 | 252 | 245 | 8.4% |
| Liberal Arts | 446 | 467 | 462 | 477 | 520 | 16.6% |
| Natural Resources | 284 | 266 | 261 | 258 | 237 | -16.5% |
| Natural Sciences | 505 | 509 | 546 | 552 | 557 | 10.3% |
| Veterinary Med & Bio Sci | 286 | 311 | 318 | 324 | 343 | 19.9% |
| University Summary | 3,380 | 3,452 | 3,494 | 3,507 | 3,630 | 7.4% |

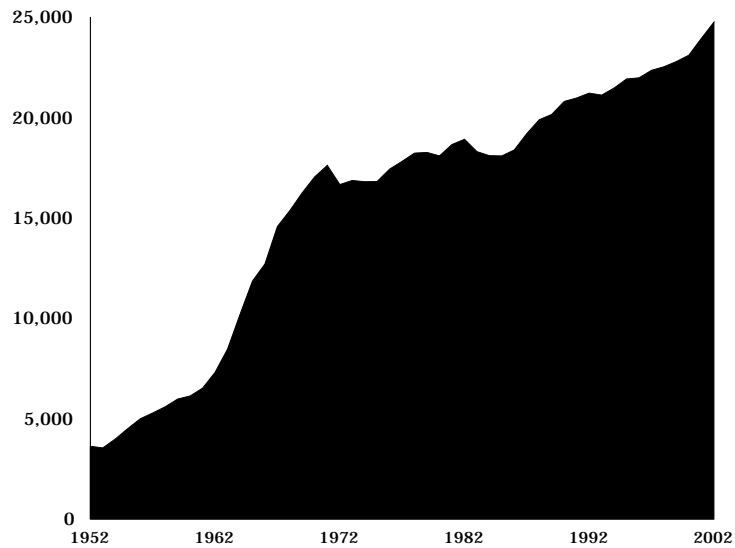
Ten-Year History of Graduate Majors by College



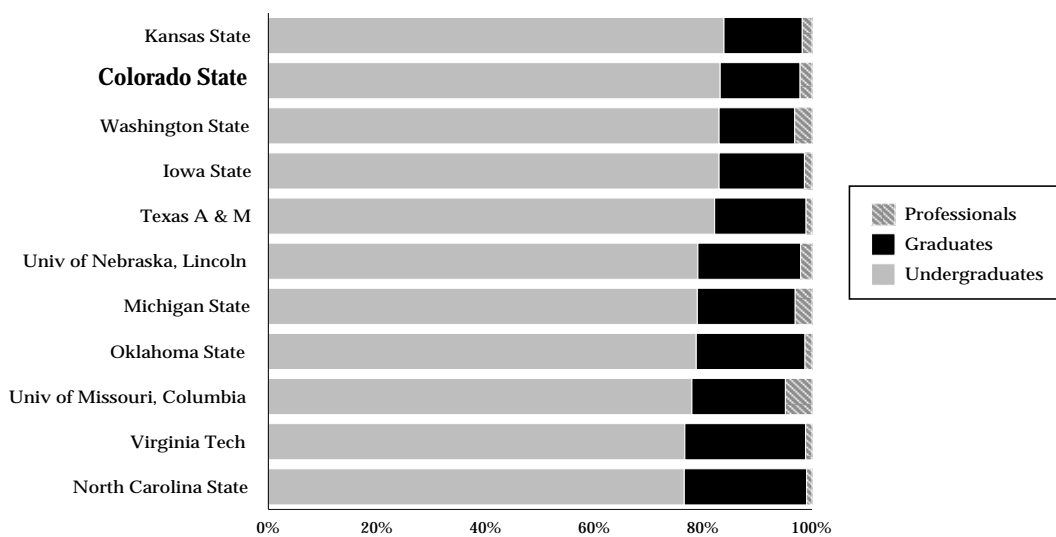
Note: PVM is excluded from numbers for Veterinary Med & Bio Sci.

Student Majors

Fifty-Year History of Enrollment

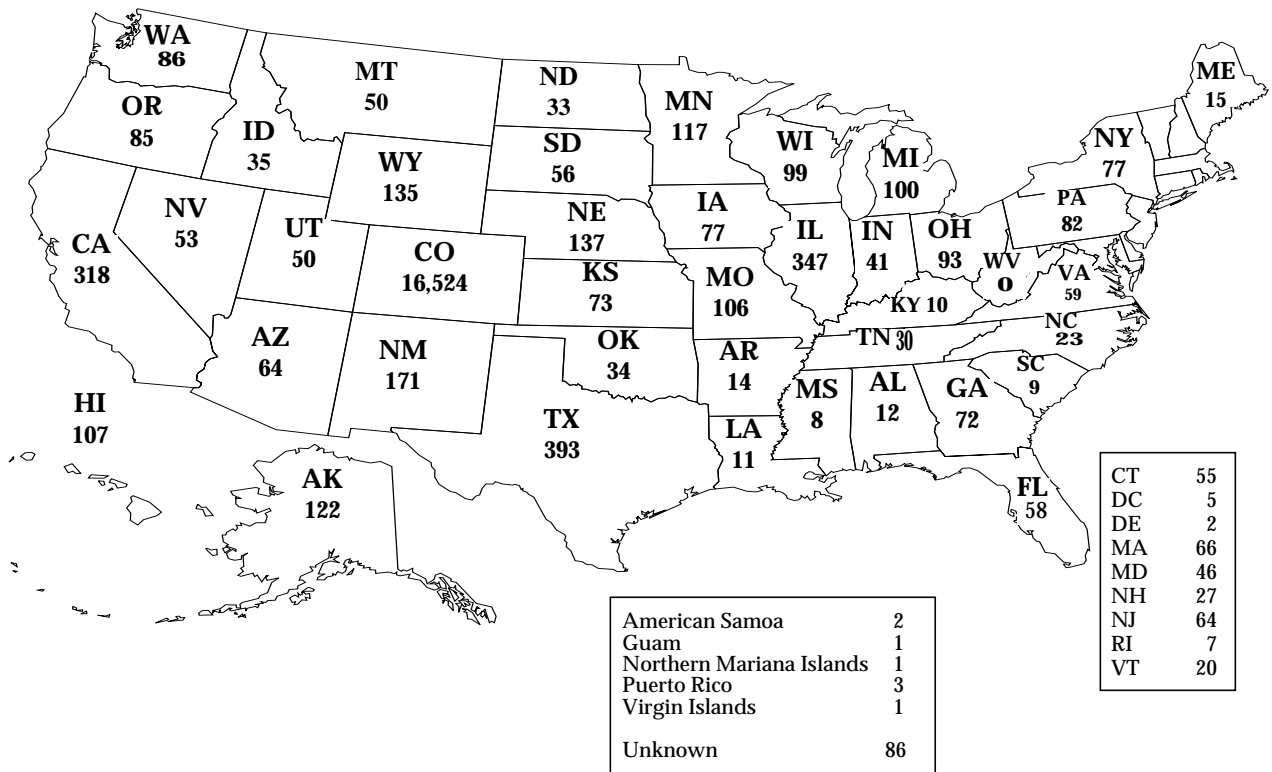


Comparison of Peer Institutions Students by Level



Students by Geographical Area

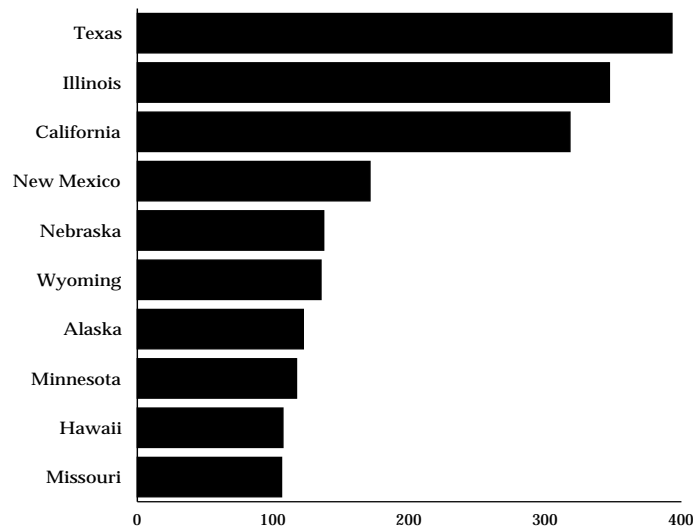
State of Residence for Undergraduate Students



Students by Geographical Area

| Resident Undergraduates by County | | | | | |
|-----------------------------------|-------|-----------------------|-------|------------|-----|
| Adams | 632 | Fremont | 86 | Morgan | 102 |
| Alamosa | 46 | Garfield | 132 | Otero | 57 |
| Arapahoe | 2,031 | Gilpin | 6 | Ouray | 8 |
| Archuleta | 33 | Grand | 60 | Park | 42 |
| Baca | 15 | Gunnison | 64 | Phillips | 33 |
| Bent | 10 | Hinsdale | 2 | Pitkin | 25 |
| Boulder | 1,132 | Huerfano | 9 | Prowers | 38 |
| Broomfield | 25 | Jackson | 5 | Pueblo | 270 |
| Chaffee | 56 | Jefferson | 2,054 | Rio Blanco | 15 |
| Cheyenne | 5 | Kiowa | 11 | Rio Grande | 44 |
| Clear Creek | 19 | Kit Carson | 36 | Routt | 126 |
| Conejos | 22 | Lake | 19 | Saguache | 8 |
| Costilla | 8 | LaPlata | 121 | San Juan | 3 |
| Crowley | 7 | Larimer | 3,973 | San Miguel | 11 |
| Custer | 11 | Las Animas | 25 | Sedgwick | 13 |
| Delta | 78 | Lincoln | 26 | Summit | 74 |
| Denver | 629 | Logan | 93 | Teller | 64 |
| Dolores | 4 | Mesa | 328 | Washington | 34 |
| Douglas | 891 | Mineral | 3 | Weld | 775 |
| Eagle | 95 | Moffat | 42 | Yuma | 47 |
| Elbert | 103 | Montezuma | 84 | | |
| El Paso | 1,566 | Montrose | 108 | | |
| <i>Not Reported: 30</i> | | Total = 16,524 | | | |

Top Ten States of Residence for Nonresident Undergraduates



Students by Geographical Area

Undergraduate Nonresident Enrollment from Selected States

| | Fall 1998 | Fall 1999 | Fall 2000 | Fall 2001 | Fall 2002 | Five-Year Change |
|---|-----------|-----------|-----------|-----------|-----------|------------------|
| Alaska | 99 | 96 | 101 | 119 | 122 | 23.2% |
| Arizona | 64 | 67 | 62 | 71 | 64 | 0.0% |
| California | 440 | 389 | 333 | 340 | 318 | -27.7% |
| Connecticut | 61 | 64 | 65 | 57 | 55 | -9.8% |
| Hawaii | 137 | 146 | 140 | 122 | 107 | -21.9% |
| Illinois | 347 | 338 | 329 | 344 | 347 | 0.0% |
| Minnesota | 131 | 126 | 110 | 99 | 117 | -10.7% |
| Missouri | 86 | 89 | 75 | 108 | 106 | 23.3% |
| Nebraska | 115 | 124 | 112 | 143 | 137 | 19.1% |
| New Jersey | 96 | 78 | 64 | 72 | 64 | -33.3% |
| New Mexico | 160 | 150 | 143 | 161 | 171 | 6.9% |
| New York | 144 | 116 | 101 | 86 | 77 | -46.5% |
| Ohio | 112 | 111 | 107 | 87 | 93 | -17.0% |
| Pennsylvania | 91 | 95 | 87 | 75 | 82 | -9.9% |
| Texas | 206 | 222 | 285 | 349 | 393 | 90.8% |
| Washington | 52 | 75 | 68 | 86 | 86 | 65.4% |
| Wisconsin | 62 | 73 | 98 | 99 | 99 | 59.7% |
| Wyoming | 106 | 118 | 130 | 139 | 135 | 27.4% |
| Subtotal | 2,509 | 2,477 | 2,410 | 2,557 | 2,573 | 2.6% |
| All Undergraduate Nonresidents | 3,671 | 3,682 | 3,667 | 3,853 | 3,860 | 5.1% |
| Enrollment from Selected States as a Percent of Total Nonresident Enrollment | 68.3% | 67.3% | 65.7% | 66.4% | 66.7% | -1.6% |

Note: International students are excluded from the all undergraduate residents total.

Students by Geographical Area

| International Students by Country | | | | | |
|--|-----|--------------|----|---------------------------|----|
| Albania | 3 | Indonesia | 12 | Russia | 2 |
| Argentina | 10 | Iran | 4 | Saudi Arabia | 63 |
| Australia | 9 | Iraq | 1 | Singapore | 1 |
| Austria | 1 | Ireland | 1 | Slovakia | 4 |
| Azerbaijan | 1 | Israel | 1 | South Africa | 8 |
| Bahamas | 1 | Italy | 4 | Spain | 3 |
| Bangladesh | 5 | Ivory Coast | 5 | Sri Lanka | 1 |
| Belize | 5 | Jamaica | 2 | Sudan | 1 |
| Botswana | 4 | Japan | 52 | Sweden | 4 |
| Brazil | 22 | Jordan | 13 | Switzerland | 2 |
| Bulgaria | 2 | Kenya | 5 | Taiwan, Republic of China | 40 |
| Belarus | 1 | Korea, South | 85 | Tanzania | 3 |
| Cameroon | 1 | Kuwait | 7 | Thailand | 24 |
| Canada | 25 | Laos | 1 | Trinidad and Tobago | 1 |
| Chile | 2 | Lebanon | 1 | Tunisia | 1 |
| China, People's Republic of | 107 | Lithuania | 1 | Turkey | 21 |
| Columbia | 9 | Macedonia | 2 | Uganda | 2 |
| Costa Rica | 1 | Malawi | 1 | Ukraine | 1 |
| Czech Republic | 1 | Malaysia | 4 | United Arab Emirates | 3 |
| Denmark | 2 | Mali | 2 | United Kingdom | 23 |
| Dominica | 1 | Mexico | 28 | Venezuela | 10 |
| Egypt | 9 | Mongolia | 11 | Vietnam | 2 |
| Ethiopia | 1 | Morocco | 1 | Western Samoa | 1 |
| France | 7 | Nepal | 1 | Yemen/Sanaa | 2 |
| Germany | 14 | Nigeria | 3 | Zimbabwe | 4 |
| Greece | 1 | Norway | 2 | Unknown | 5 |
| Guatemala | 4 | Oman | 2 | | |
| Guinea | 1 | Pakistan | 2 | | |
| Hong Kong | 2 | Peru | 3 | | |
| Hungary | 4 | Philippines | 3 | | |
| Iceland | 1 | Poland | 2 | | |
| India | 159 | Romania | 10 | | |
| Total International Students = 920 from 90 Countries | | | | | |

Students by Geographical Area

Five-Year History of International Undergraduate Student Enrollment

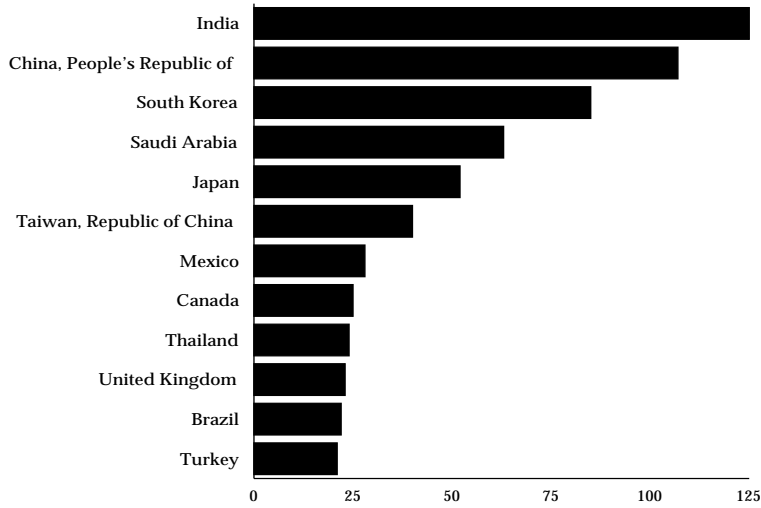
| | Fall 1998 | Fall 1999 | Fall 2000 | Fall 2001 | Fall 2002 | Five-Year Change |
|--------------------------|-----------|-----------|-----------|-----------|-----------|------------------|
| Agricultural Sciences | 12 | 13 | 15 | 13 | 8 | -33.3% |
| Applied Human Sciences | 24 | 23 | 21 | 21 | 20 | -16.7% |
| Business | 39 | 29 | 24 | 28 | 21 | -46.2% |
| Engineering | 24 | 17 | 12 | 17 | 21 | -12.5% |
| Intra-University | 62 | 55 | 53 | 79 | 66 | 6.5% |
| Liberal Arts | 25 | 18 | 25 | 22 | 22 | -12.0% |
| Natural Resources | 15 | 14 | 13 | 7 | 5 | -66.7% |
| Natural Sciences | 28 | 33 | 35 | 50 | 57 | 103.6% |
| Veterinary Med & Bio Sci | 1 | 3 | 6 | 6 | 7 | 600.0% |
| University Summary | 230 | 205 | 204 | 243 | 227 | -1.3% |

Five-Year History of International Graduate Student Enrollment

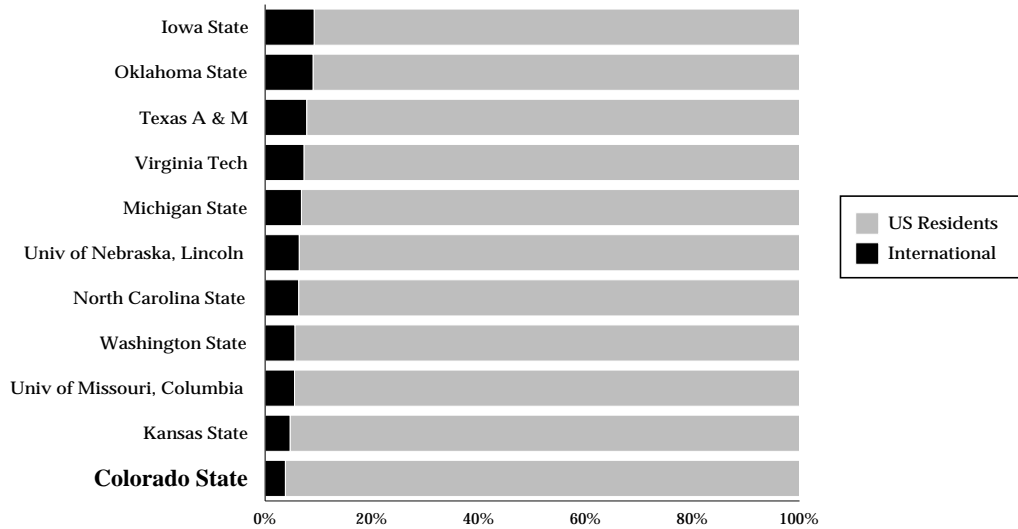
| | Fall 1998 | Fall 1999 | Fall 2000 | Fall 2001 | Fall 2002 | Five-Year Change |
|--------------------------|-----------|-----------|-----------|-----------|-----------|------------------|
| Agricultural Sciences | 68 | 60 | 56 | 51 | 43 | -36.8% |
| Applied Human Sciences | 31 | 31 | 29 | 36 | 47 | 51.6% |
| Business | 58 | 36 | 39 | 29 | 29 | -50.0% |
| Engineering | 183 | 194 | 191 | 228 | 233 | 27.3% |
| Intra-University | 17 | 19 | 23 | 28 | 25 | 47.1% |
| Liberal Arts | 37 | 53 | 62 | 62 | 68 | 83.8% |
| Natural Resources | 33 | 32 | 32 | 33 | 23 | -30.3% |
| Natural Sciences | 90 | 121 | 139 | 158 | 172 | 91.1% |
| Veterinary Med & Bio Sci | 34 | 39 | 43 | 44 | 50 | 47.1% |
| University Summary | 551 | 585 | 614 | 669 | 690 | 25.2% |

Students by Geographical Area

Top 12 Countries of Origin for International Students

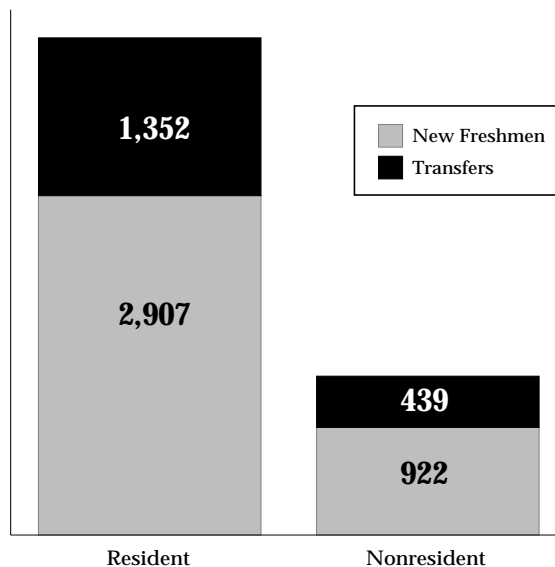


Comparison of Peer Institutions International Students



New Undergraduate Student Profile

New Undergraduates by Residency



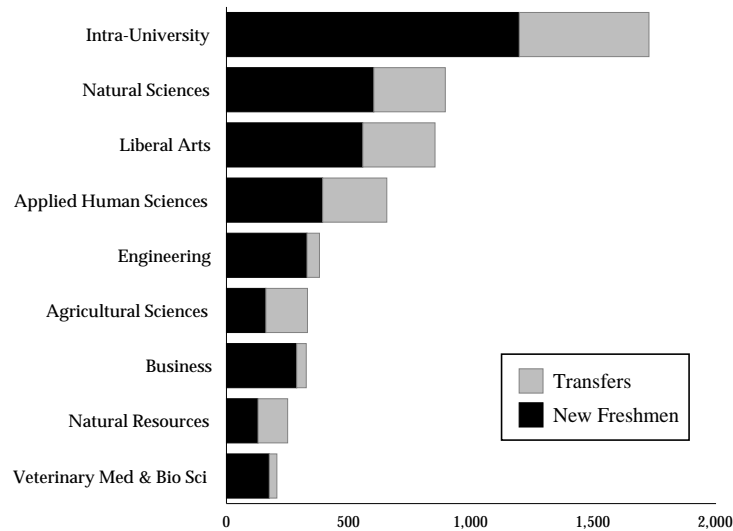
Total New Undergraduates = 5,620

New Freshmen Profile

| | |
|---|-------|
| New Freshmen | 3,829 |
| Percent of Admitted Students Who Enroll | 40% |
| Mean High School Percentile Rank | 74 |
| Mean High School GPA | 3.49 |
| Mean ACT Composite | 24.2 |
| Mean SAT Verbal | 548 |
| Mean SAT Math | 559 |
| Mean CCHE Index | 110 |

New Undergraduate Student Profile

New Undergraduates by College

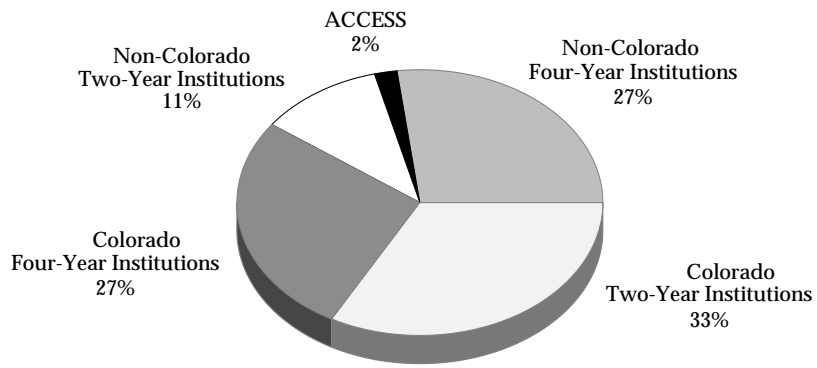


History of First-Time Freshmen Enrollment

| | Fall 1998 | Fall 1999 | Fall 2000 | Fall 2001 | Fall 2002 | Five-Year Change |
|---------------------------|-----------|-----------|-----------|-----------|-----------|------------------|
| Men | 1,270 | 1,405 | 1,414 | 1,648 | 1,692 | 33.2% |
| Women | 1,786 | 1,732 | 1,900 | 2,072 | 2,137 | 19.7% |
| Full-Time | 3,015 | 3,086 | 3,229 | 3,637 | 3,760 | 24.7% |
| Part-Time | 41 | 51 | 85 | 83 | 69 | 68.3% |
| Resident | 2,310 | 2,377 | 2,525 | 2,806 | 2,907 | 25.8% |
| Nonresident | 746 | 760 | 789 | 914 | 922 | 23.6% |
| Minority | 376 | 388 | 460 | 476 | 509 | 35.4% |
| Nonminority | 2,680 | 2,749 | 2,854 | 3,244 | 3,320 | 23.9% |
| Total First-Time Freshmen | 3,056 | 3,137 | 3,314 | 3,720 | 3,829 | 25.3% |

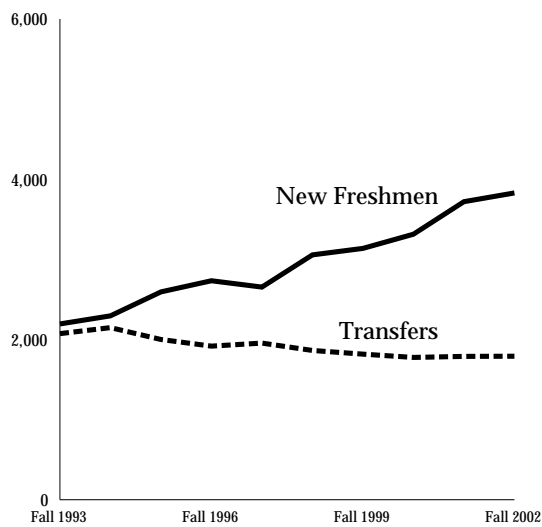
New Undergraduate Student Profile

Previous Institutions for Transfer Students



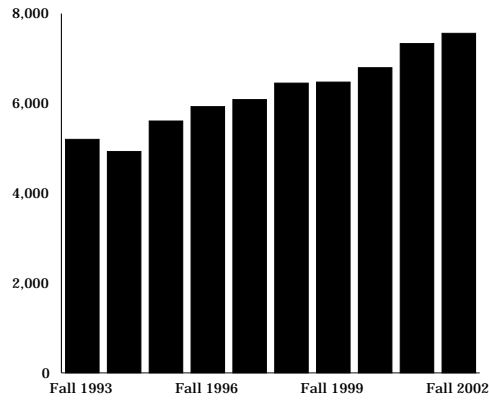
Total Transfers = 1,791

History of New Freshmen and Transfer Students

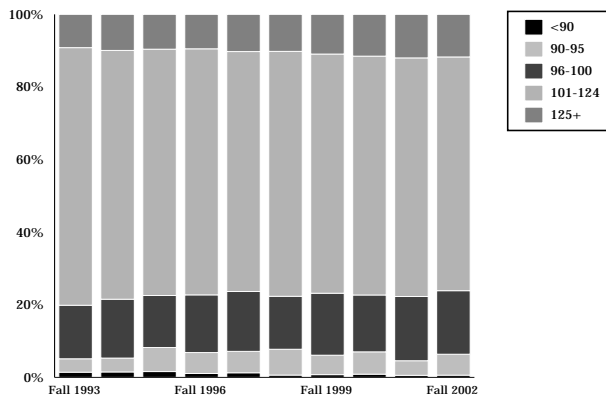


New Undergraduate Student Profile

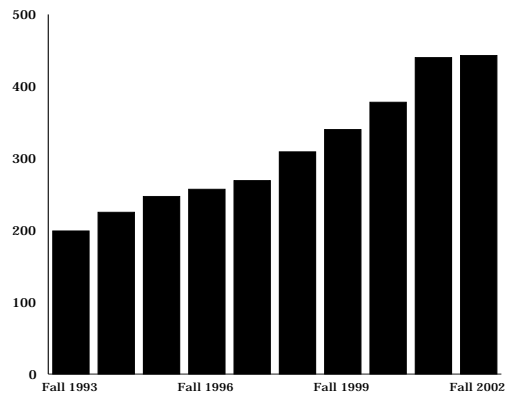
Students Admitted with a CCHE Index of 101 or Higher



CCHE Index for New Freshmen



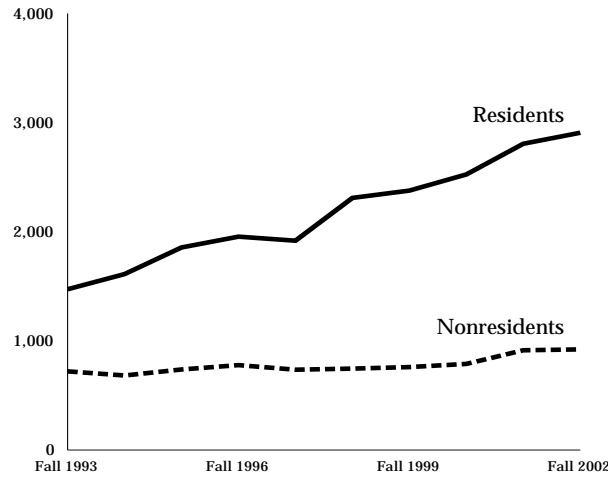
New Freshmen with a CCHE Index of 125 or Higher



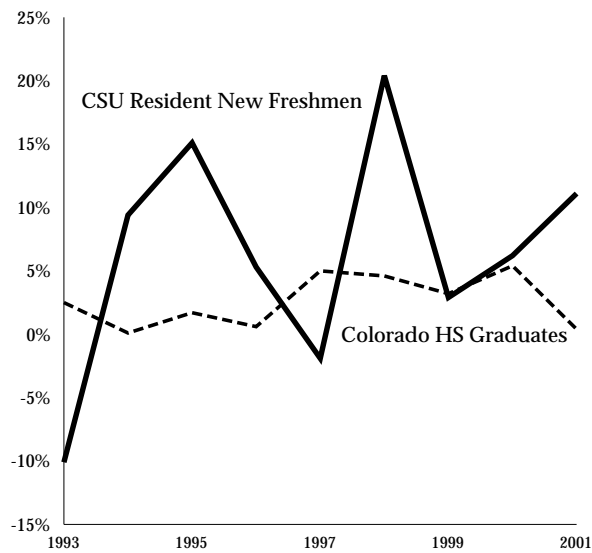
Note: The CCHE Index is an admissions standard developed by the Colorado Commission on Higher Education which is based on high school work and test scores.

New Undergraduate Student Profile

History of New Freshmen by Residency



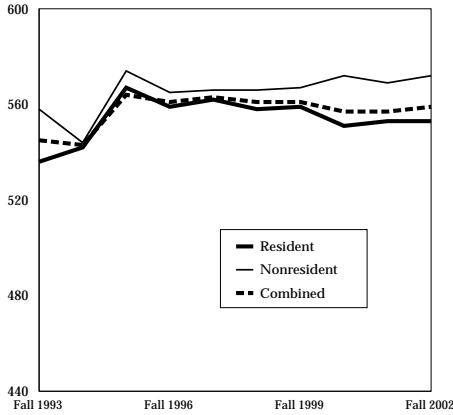
CSU Resident New Freshmen and Colorado High School Graduates Percent Change from Previous Year



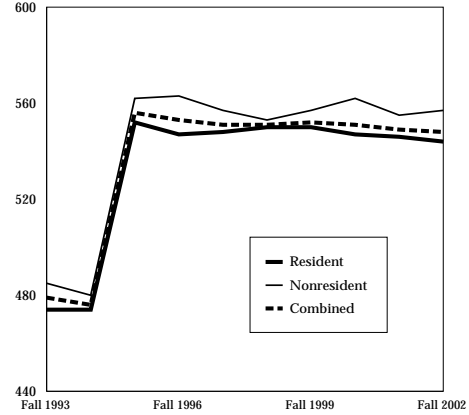
New Undergraduate Student Profile

New Freshmen

Average Scholastic Aptitude Test: Math



Average Scholastic Aptitude Test: Verbal

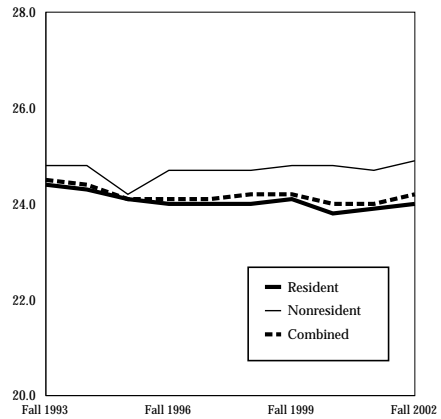


Note: The College Entrance Examination Board recentered the SAT score in 1995 to reestablish the average score near the midpoint of the 200-800 scale.

Average High School GPA



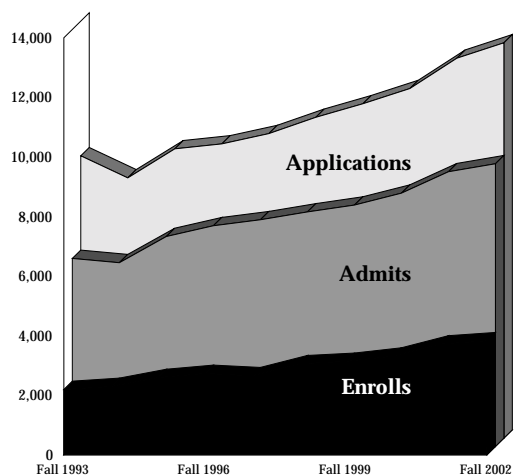
American College Testing Composite Scores



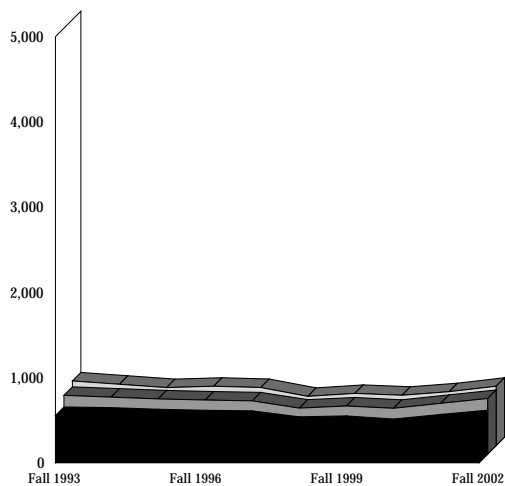
New Undergraduate Student Profile

Applications, Admits and Enrolls

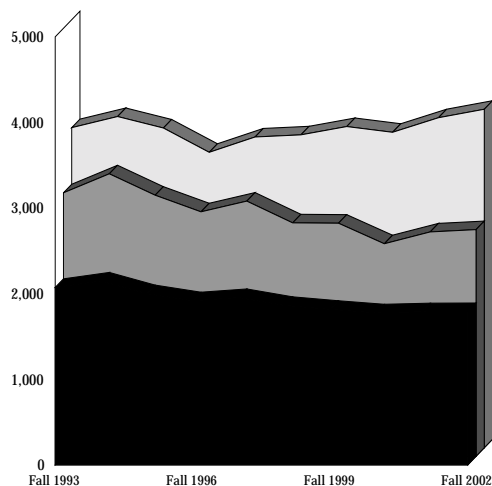
Freshmen



Readmitted Students

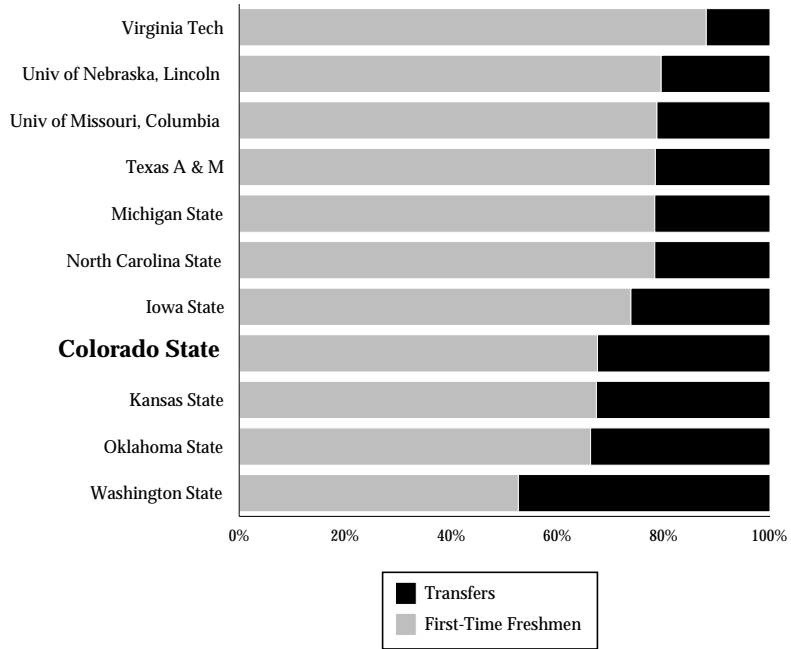


Transfers



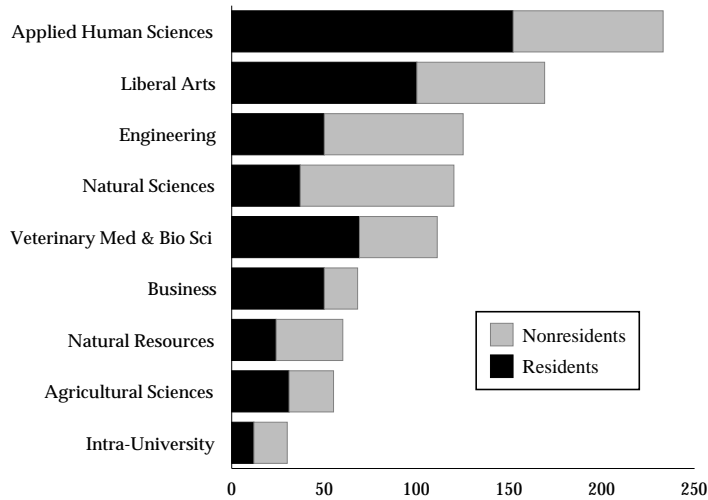
New Undergraduate Student Profile

Comparison of Peer Institutions New Student Enrollment

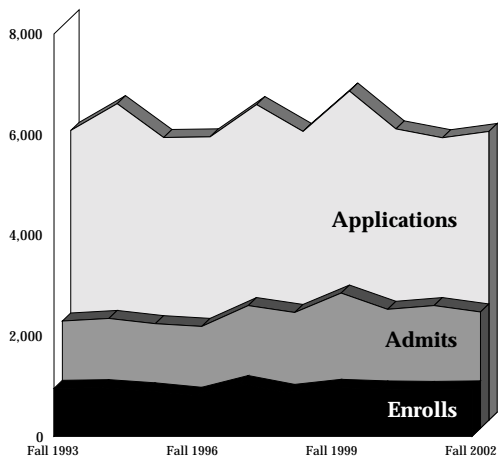


New Graduate Student Profile

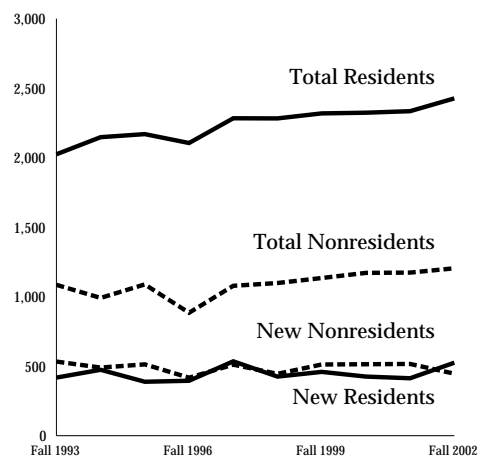
New Graduate Students by College



History of Applications, Admits and Enrolls



History of New and Total Graduate Students by Residency



New Graduate Student Profile

History of Average Verbal GRE Scores for Entering Graduate Students

| | Fall 1998 | Fall 1999 | Fall 2000 | Fall 2001 | Fall 2002 | Five-Year Change |
|--------------------------|-----------|-----------|-----------|-----------|-----------|------------------|
| Agricultural Sciences | 472.3 | 482.6 | 464.5 | 464.9 | 471.2 | -0.2% |
| Applied Human Sciences | 476.2 | 475.6 | 478.6 | 469.1 | 471.7 | -0.9% |
| Engineering | 492.8 | 494.0 | 491.6 | 480.0 | 492.6 | -0.1% |
| Intra-University | 556.3 | 547.7 | 557.5 | 578.9 | 564.1 | 1.4% |
| Liberal Arts | 527.7 | 523.6 | 512.7 | 518.0 | 516.3 | -2.2% |
| Natural Resources | 544.7 | 540.6 | 524.5 | 504.9 | 522.6 | -4.1% |
| Natural Sciences | 516.1 | 516.4 | 534.0 | 510.4 | 506.9 | -1.8% |
| Veterinary Med & Bio Sci | 493.5 | 501.7 | 504.4 | 483.5 | 505.2 | 2.4% |
| University Average | 503.7 | 504.0 | 505.0 | 494.5 | 500.1 | -0.7% |

History of Average Quantitative GRE Scores for Entering Graduate Students

| | Fall 1998 | Fall 1999 | Fall 2000 | Fall 2001 | Fall 2002 | Five-Year Change |
|--------------------------|-----------|-----------|-----------|-----------|-----------|------------------|
| Agricultural Sciences | 578.5 | 559.0 | 593.8 | 602.7 | 553.2 | -4.4% |
| Applied Human Sciences | 523.8 | 514.0 | 553.8 | 560.1 | 546.8 | 4.4% |
| Engineering | 702.5 | 708.7 | 723.0 | 723.7 | 723.2 | 2.9% |
| Intra-University | 657.8 | 659.1 | 662.8 | 663.6 | 647.6 | -1.6% |
| Liberal Arts | 544.1 | 550.2 | 549.9 | 562.7 | 557.3 | 2.4% |
| Natural Resources | 610.7 | 604.9 | 633.2 | 631.8 | 631.9 | 3.5% |
| Natural Sciences | 686.0 | 701.6 | 686.2 | 695.3 | 698.5 | 1.8% |
| Veterinary Med & Bio Sci | 616.0 | 610.7 | 616.9 | 603.9 | 612.6 | -0.6% |
| University Average | 602.7 | 602.7 | 620.3 | 629.4 | 614.7 | 2.0% |

History of Average Analytical GRE Scores for Entering Graduate Students

| | Fall 1998 | Fall 1999 | Fall 2000 | Fall 2001 | Fall 2002 | Five-Year Change |
|--------------------------|-----------|-----------|-----------|-----------|-----------|------------------|
| Agricultural Sciences | 605.5 | 561.2 | 608.0 | 604.1 | 580.0 | -4.2% |
| Applied Human Sciences | 555.7 | 542.5 | 575.8 | 578.4 | 577.9 | 4.0% |
| Engineering | 615.1 | 633.4 | 646.0 | 641.9 | 637.0 | 3.6% |
| Intra-University | 649.6 | 674.1 | 635.0 | 658.6 | 655.5 | 0.9% |
| Liberal Arts | 575.5 | 569.8 | 589.6 | 581.6 | 602.7 | 4.7% |
| Natural Resources | 600.8 | 603.9 | 637.2 | 605.1 | 615.5 | 2.4% |
| Natural Sciences | 646.8 | 645.1 | 648.1 | 659.0 | 654.8 | 1.2% |
| Veterinary Med & Bio Sci | 613.6 | 612.6 | 618.4 | 638.6 | 632.4 | 3.1% |
| University Average | 597.7 | 594.6 | 614.6 | 617.8 | 615.7 | 3.0% |

Note: GRE scores for the College of Business are excluded since applicants generally take the GMAT and scores are unavailable.

ACCESS/START-UP Students

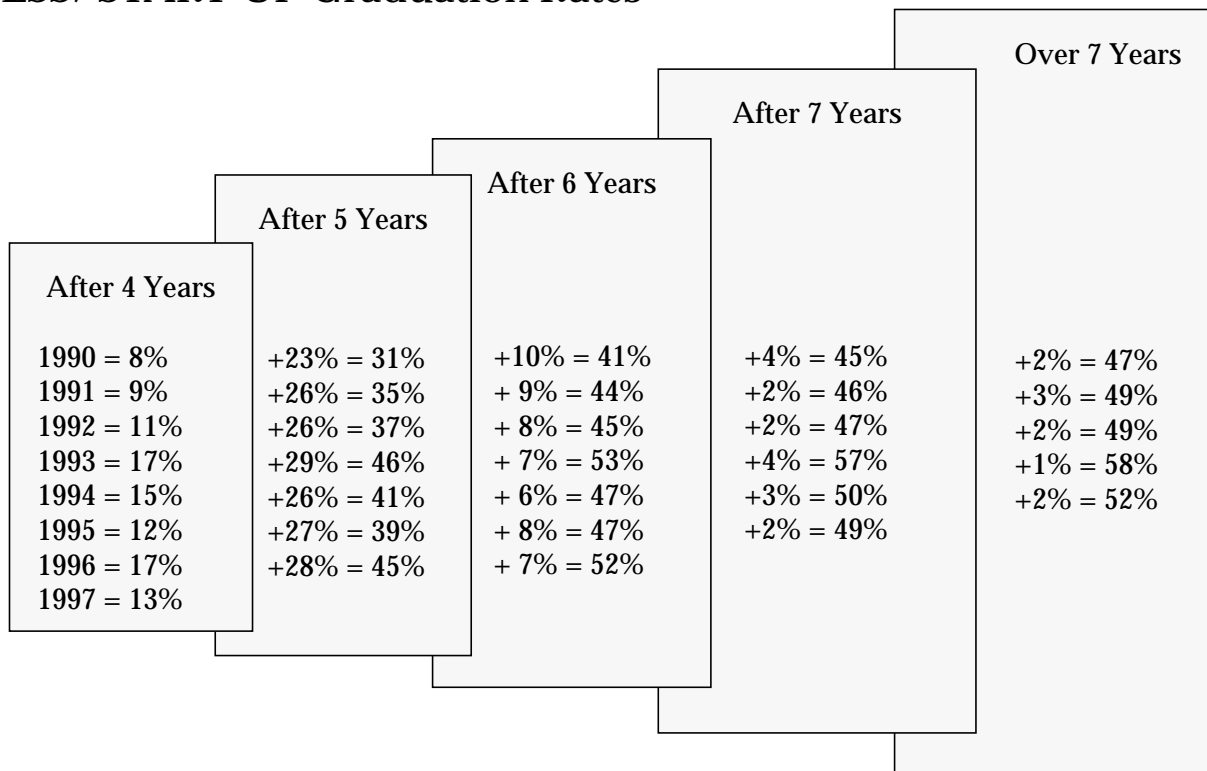
ACCESS/START-UP is a program that allows students who do not meet regular admissions requirements, but show potential, to take classes through the Division of Educational Outreach. Many of these students are eventually accepted as resident instruction (RI) transfer students. The persistence rates reflect the number of students who graduated and/or enrolled each semester as a percentage of the original entering ACCESS/START-UP class. ACCESS was changed to START-UP in Fall 2002. Resident START-UP students are required to pay resident tuition plus general fund support.

Semester Persistence Profile for ACCESS/START-UP Students

| Entered Fall | Starting ACCESS/START-UP | Spring Semester | | Percent Returning as Resident Instruction (RI) Students by Semester: | | | | | | | |
|--------------|--------------------------|--------------------------|-----------|--|--------|----------|--------|----------|--------|----------|--------|
| | | Still in ACCESS/START-UP | Became RI | 2nd Fall | Spring | 3rd Fall | Spring | 4th Fall | Spring | 5th Fall | Spring |
| 1990 | 490 | 36% | 56% | 66% | 62% | 57% | 55% | 55% | 54% | 50% | 47% |
| 1991 | 749 | 37% | 57% | 66% | 64% | 56% | 52% | 53% | 50% | 48% | 46% |
| 1992 | 554 | 33% | 58% | 69% | 66% | 58% | 54% | 51% | 50% | 50% | 49% |
| 1993 | 416 | 27% | 68% | 72% | 70% | 62% | 60% | 62% | 59% | 58% | 57% |
| 1994 | 507 | 37% | 54% | 61% | 60% | 56% | 54% | 56% | 54% | 52% | 52% |
| 1995 | 399 | 34% | 59% | 64% | 62% | 58% | 55% | 56% | 55% | 53% | 50% |
| 1996 | 321 | 37% | 55% | 65% | 64% | 62% | 59% | 60% | 60% | 57% | 55% |
| 1997 | 356 | 33% | 54% | 66% | 64% | 59% | 56% | 56% | 54% | 52% | 52% |
| 1998 | 348 | 40% | 52% | 61% | 62% | 56% | 49% | 53% | 52% | | |
| 1999 | 519 | 39% | 52% | 59% | 58% | 55% | 52% | | | | |
| 2000 | 507 | 34% | 58% | 64% | 64% | | | | | | |
| 2001 | 438 | 24% | 70% | | | | | | | | |
| 2002 | 276 | | | | | | | | | | |

ACCESS/START-UP Students

ACCESS/START-UP Graduation Rates



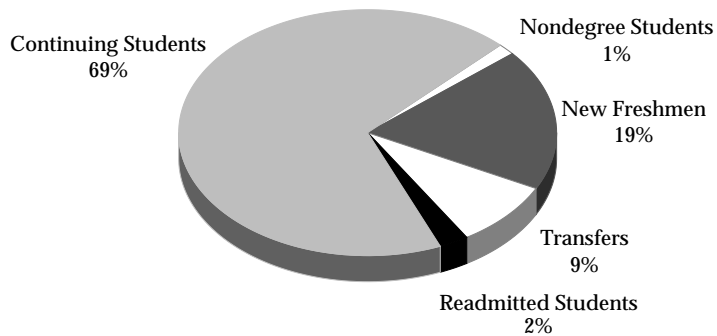
Note: Degrees included are through Summer 2002.

Students by Registration Type

Undergraduate Students by Registration Type and Residency

| | Residents | Nonresidents | Percent of Students Who are Residents | Total Students |
|---------------------|-----------|--------------|---------------------------------------|----------------|
| New Freshmen | 2,907 | 922 | 75.9% | 3,829 |
| Transfer Students | 1,352 | 439 | 75.5% | 1,791 |
| Readmitted Students | 445 | 71 | 86.2% | 516 |
| Continuing Students | 11,530 | 2,592 | 81.6% | 14,122 |
| Nondegree Students | 290 | 20 | 93.5% | 310 |
| University Summary | 16,524 | 4,044 | 80.3% | 20,568 |

Undergraduate Students by Registration Type



Graduate Students by Registration Type and Residency

| | Residents | Nonresidents | Percent of Students Who are Residents | Total Students |
|---------------------|-----------|--------------|---------------------------------------|----------------|
| New Students | 525 | 446 | 54.1% | 971 |
| Continuing Students | 1,792 | 743 | 70.7% | 2,535 |
| Nondegree Students | 109 | 15 | 87.9% | 124 |
| University Summary | 2,426 | 1,204 | 66.8% | 3,630 |

Students by Registration Type

Undergraduate Registration Type by College

| | New Freshmen | Transfers | Readmits | Continuing | Nondegree | Total Students |
|--------------------------|--------------|-----------|----------|------------|-----------|----------------|
| Agricultural Sciences | 161 | 170 | 30 | 962 | 1 | 1,324 |
| Applied Human Sciences | 393 | 262 | 85 | 2,324 | 65 | 3,129 |
| Business | 287 | 39 | 26 | 1,679 | 0 | 2,031 |
| Engineering | 329 | 51 | 26 | 1,091 | 0 | 1,497 |
| Intra-University | 1,196 | 530 | 68 | 1,485 | 242 | 3,521 |
| Liberal Arts | 557 | 295 | 129 | 3,265 | 1 | 4,247 |
| Natural Resources | 129 | 121 | 35 | 733 | 0 | 1,018 |
| Natural Sciences | 602 | 292 | 99 | 2,282 | 1 | 3,276 |
| Veterinary Med & Bio Sci | 175 | 31 | 18 | 301 | 0 | 525 |
| University Summary | 3,829 | 1,791 | 516 | 14,122 | 310 | 20,568 |

History of Undergraduates by Registration Type

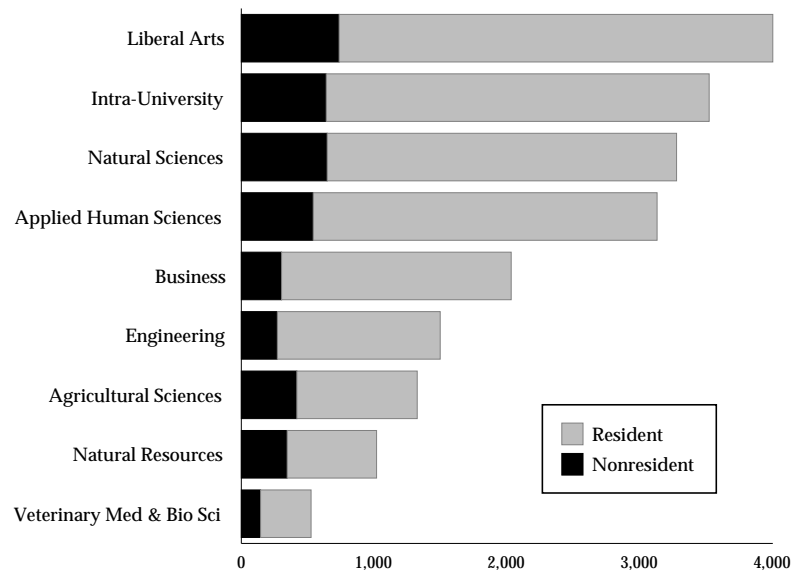
| | Fall 1998 | Fall 1999 | Fall 2000 | Fall 2001 | Fall 2002 | Five-Year Change |
|--------------|-----------|-----------|-----------|-----------|-----------|------------------|
| New Freshmen | 3,056 | 3,137 | 3,314 | 3,720 | 3,829 | 25.3% |
| Transfers | 1,863 | 1,817 | 1,776 | 1,789 | 1,791 | -3.9% |
| Readmits | 438 | 449 | 412 | 466 | 516 | 17.8% |
| Continuing | 12,927 | 13,080 | 13,315 | 13,559 | 14,122 | 9.2% |
| Nondegree | 323 | 316 | 258 | 365 | 310 | -4.0% |
| Total | 18,607 | 18,800 | 19,075 | 19,899 | 20,568 | 10.5% |

Students by Residency

Undergraduate Students by Residency and College

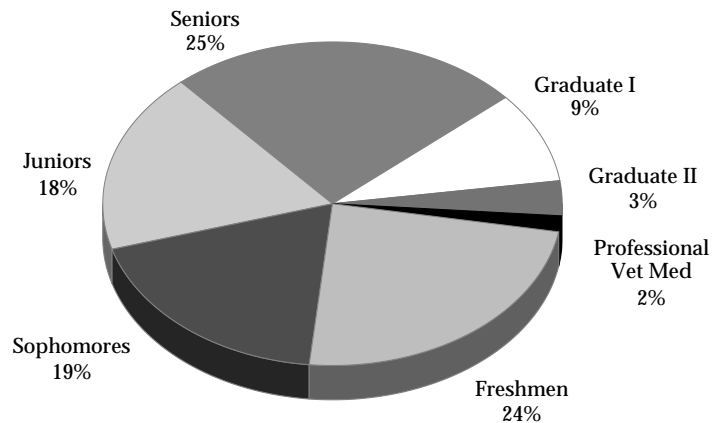
| | Residents | Nonresidents | Percent of Students Who are Residents | Total |
|--------------------------|-----------|--------------|---------------------------------------|--------|
| Agricultural Sciences | 906 | 418 | 68% | 1,324 |
| Applied Human Sciences | 2,588 | 541 | 83% | 3,129 |
| Business | 1,728 | 303 | 85% | 2,031 |
| Engineering | 1,226 | 271 | 82% | 1,497 |
| Intra-University | 2,882 | 639 | 82% | 3,521 |
| Liberal Arts | 3,511 | 736 | 83% | 4,247 |
| Natural Resources | 673 | 345 | 66% | 1,018 |
| Natural Sciences | 2,630 | 646 | 80% | 3,276 |
| Veterinary Med & Bio Sci | 380 | 145 | 72% | 525 |
| University Summary | 16,524 | 4,044 | 80% | 20,568 |

Residency by College



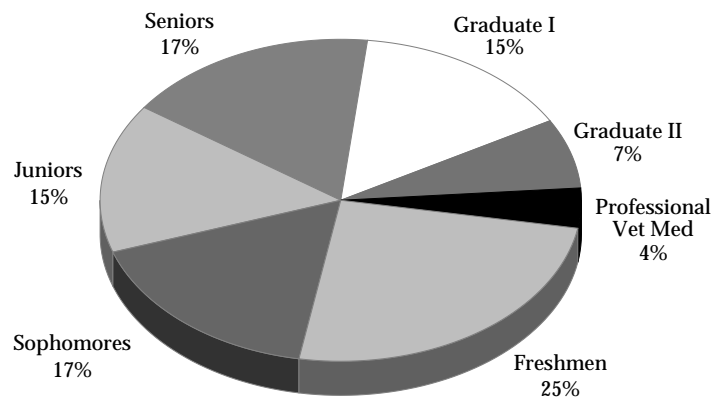
Students by Residency

Residents



Total = 19,255

Nonresidents



Total = 5,480

Students by Residency

History of Undergraduate Enrollment by Residency

| | Residents | | Nonresidents | |
|-----------|-----------|---------|--------------|---------|
| | Number | Percent | Number | Percent |
| Fall 1993 | 13,545 | 77.5% | 3,930 | 22.5% |
| Fall 1994 | 13,795 | 77.5% | 4,005 | 22.5% |
| Fall 1995 | 14,003 | 77.2% | 4,133 | 22.8% |
| Fall 1996 | 14,464 | 78.4% | 3,987 | 21.6% |
| Fall 1997 | 14,521 | 78.7% | 3,930 | 21.3% |
| Fall 1998 | 14,747 | 79.3% | 3,860 | 20.7% |
| Fall 1999 | 14,951 | 79.5% | 3,849 | 20.5% |
| Fall 2000 | 15,246 | 79.9% | 3,829 | 20.1% |
| Fall 2001 | 15,864 | 79.7% | 4,035 | 20.3% |
| Fall 2002 | 16,524 | 80.3% | 4,044 | 19.7% |

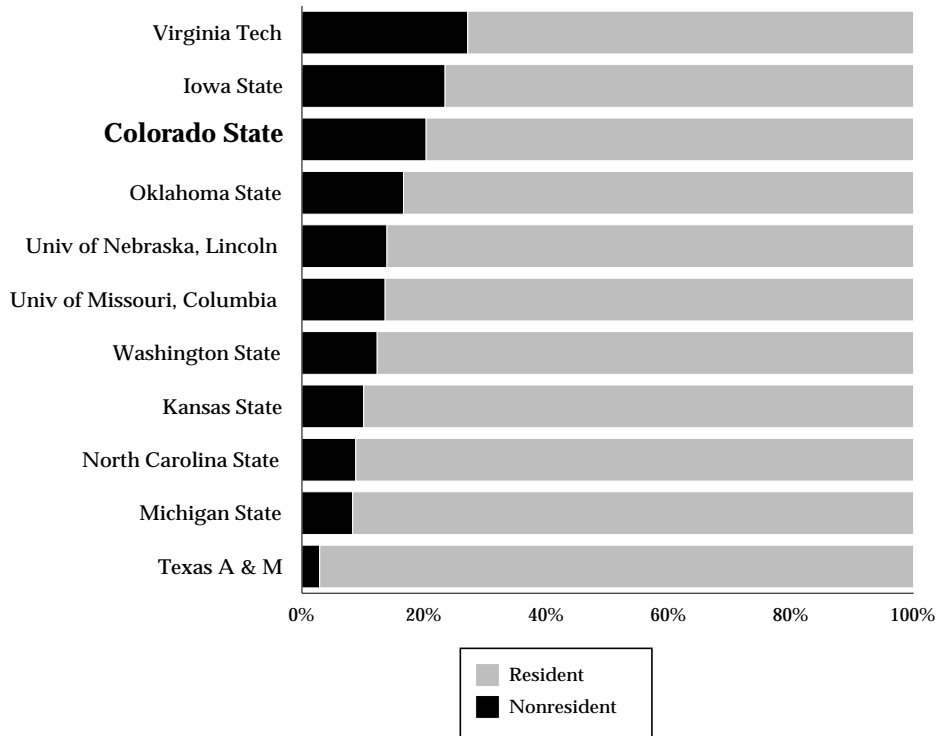
History of Graduate Enrollment by Residency

| | Residents | | Nonresidents | |
|-----------|-----------|---------|--------------|---------|
| | Number | Percent | Number | Percent |
| Fall 1993 | 2,024 | 65.1% | 1,085 | 34.9% |
| Fall 1994 | 2,147 | 68.4% | 991 | 31.6% |
| Fall 1995 | 2,169 | 66.6% | 1,088 | 33.4% |
| Fall 1996 | 2,105 | 70.4% | 884 | 29.6% |
| Fall 1997 | 2,283 | 67.9% | 1,078 | 32.1% |
| Fall 1998 | 2,282 | 67.5% | 1,098 | 32.5% |
| Fall 1999 | 2,318 | 67.1% | 1,134 | 32.9% |
| Fall 2000 | 2,323 | 66.5% | 1,171 | 33.5% |
| Fall 2001 | 2,334 | 66.6% | 1,173 | 33.4% |
| Fall 2002 | 2,426 | 66.8% | 1,204 | 33.2% |

Note: PVM is excluded from graduate enrollment.

Students by Residency

Comparison of Peer Institutions Undergraduates by Residency

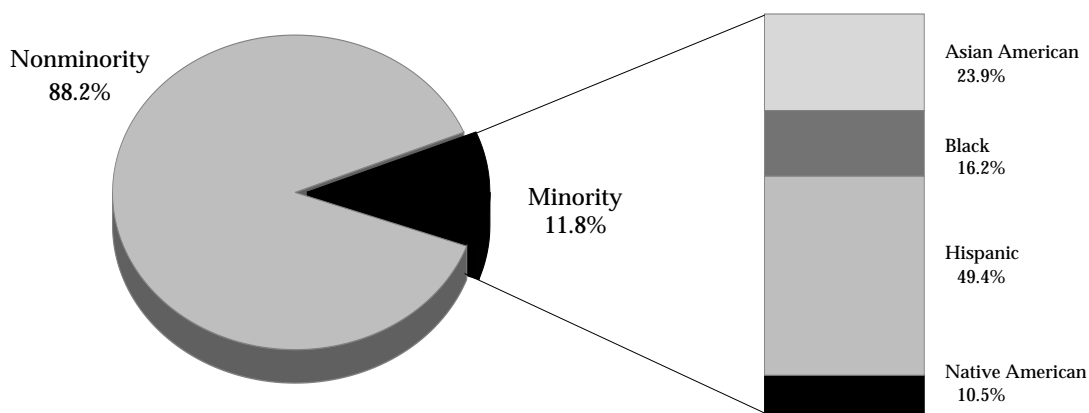


Students by Ethnic Origin

Ethnic Origin by College

| | Asian American | Black | Hispanic | Native American | Minority Total | International | Non-minority | Total |
|--------------------------|----------------|-------|----------|-----------------|----------------|---------------|--------------|--------|
| Agricultural Sciences | 20 | 10 | 49 | 22 | 101 | 51 | 1,399 | 1,551 |
| Applied Human Sciences | 92 | 75 | 226 | 43 | 436 | 67 | 3,411 | 3,914 |
| Business | 60 | 31 | 111 | 22 | 224 | 50 | 1,935 | 2,209 |
| Engineering | 51 | 13 | 91 | 15 | 170 | 254 | 1,611 | 2,035 |
| Intra-University | 119 | 104 | 267 | 41 | 531 | 91 | 3,144 | 3,766 |
| Liberal Arts | 94 | 130 | 289 | 66 | 579 | 90 | 4,098 | 4,767 |
| Natural Resources | 21 | 8 | 37 | 20 | 86 | 28 | 1,141 | 1,255 |
| Natural Sciences | 150 | 68 | 222 | 41 | 481 | 229 | 3,123 | 3,833 |
| Veterinary Med & Bio Sci | 63 | 15 | 91 | 23 | 192 | 60 | 1,153 | 1,405 |
| University Summary | 670 | 454 | 1,383 | 293 | 2,800 | 920 | 21,015 | 24,735 |

Students by Ethnic Origin



Note: International students are excluded from the base population.

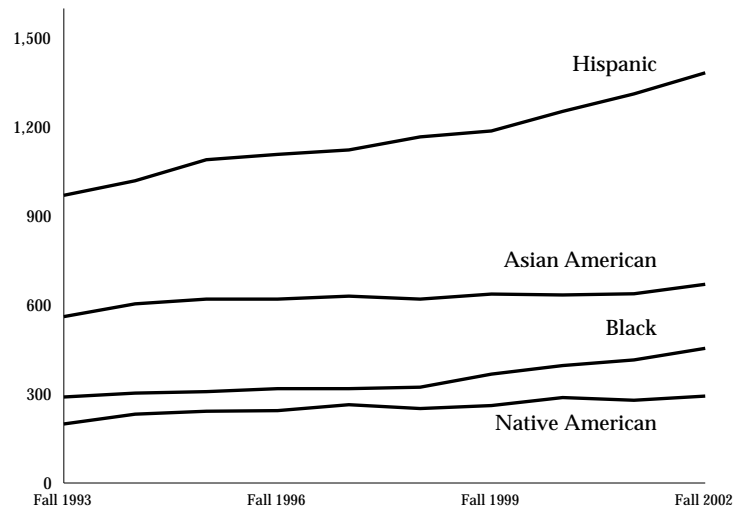
Students by Ethnic Origin

History of Student Ethnicity

| | Minorities | Nonminorities |
|-----------|------------|---------------|
| Fall 1991 | 9.2% | 90.8% |
| Fall 1992 | 9.4% | 90.6% |
| Fall 1993 | 9.9% | 90.1% |
| Fall 1994 | 10.4% | 89.6% |
| Fall 1995 | 10.6% | 89.4% |
| Fall 1996 | 10.7% | 89.3% |
| Fall 1997 | 10.8% | 89.2% |
| Fall 1998 | 10.9% | 89.1% |
| Fall 1999 | 11.2% | 88.8% |
| Fall 2000 | 11.5% | 88.5% |
| Fall 2001 | 11.5% | 88.5% |
| Fall 2002 | 11.8% | 88.2% |

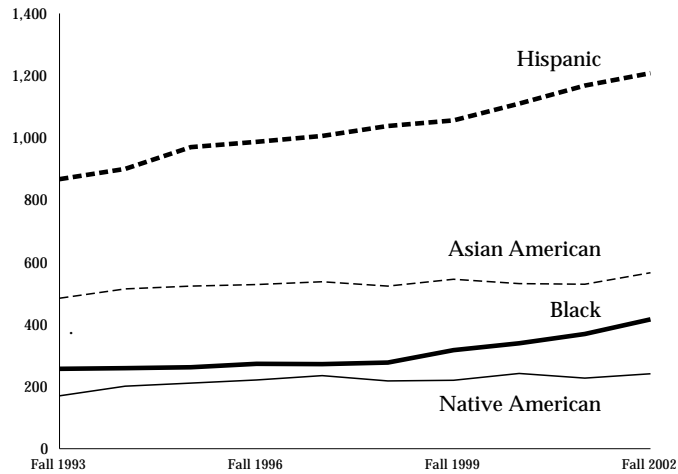
Note: International students are excluded from the base population.

History of Total Ethnic Minority Student Enrollment

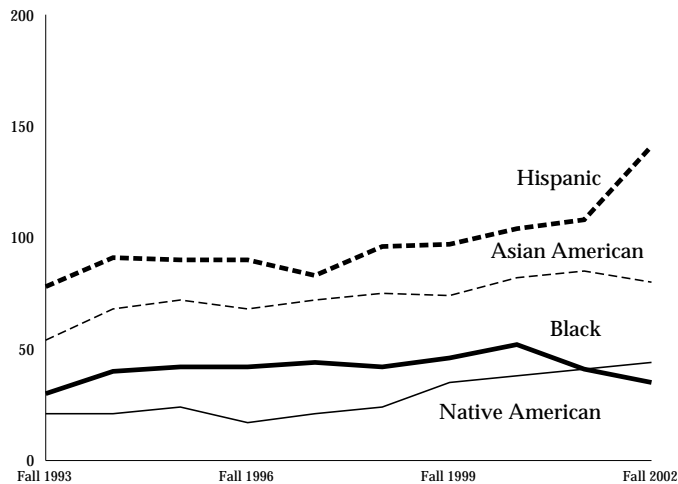


Students by Ethnic Origin

History of Undergraduate Ethnic Minority Student Enrollment



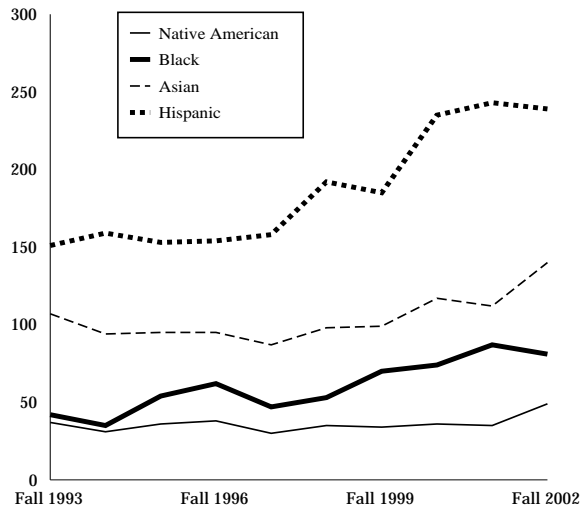
History of Graduate Ethnic Minority Student Enrollment



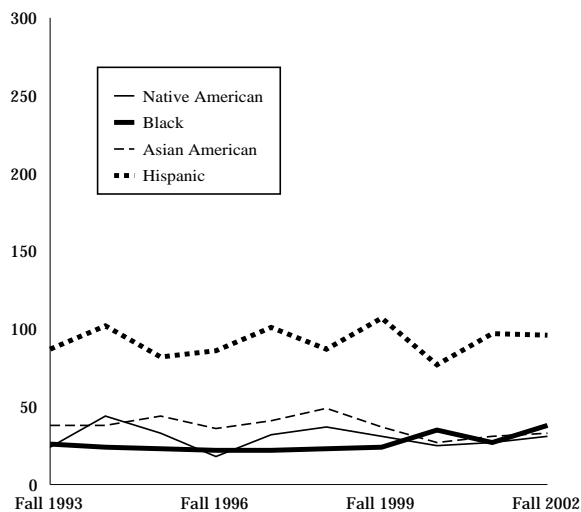
Note: Graduate enrollment excludes PVM.

Students by Ethnic Origin

History of Ethnicity of Entering Freshmen



History of Ethnicity of Entering Transfer Students



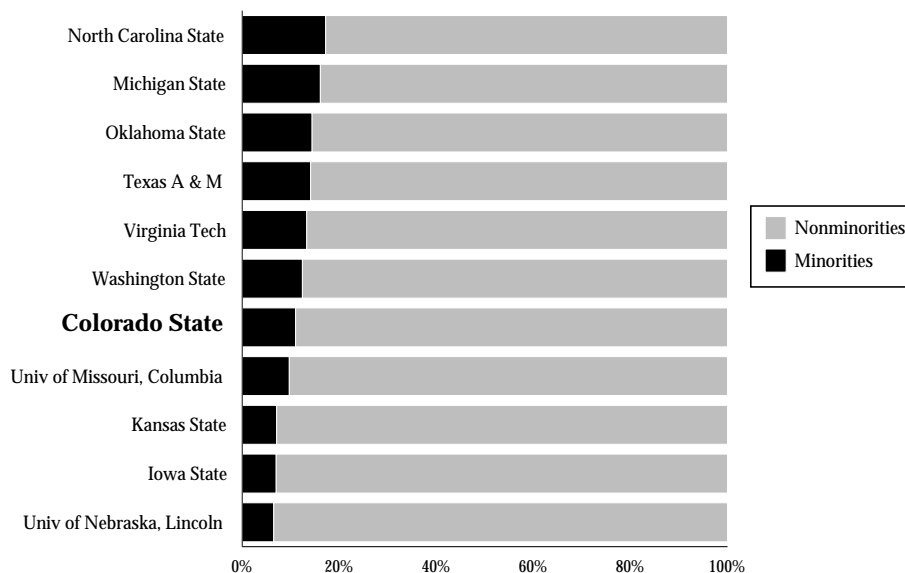
Students by Ethnic Origin

Ethnic Minority Undergraduate Students as a Percent of Total Undergraduate Enrollment by College

| | Fall 1998 | Fall 1999 | Fall 2000 | Fall 2001 | Fall 2002 | Five-Year Change |
|--------------------------|-----------|-----------|-----------|-----------|-----------|------------------|
| Agricultural Sciences | 9.4% | 9.2% | 8.3% | 8.0% | 7.0% | -2.4% |
| Applied Human Sciences | 10.0% | 10.1% | 10.7% | 11.1% | 10.8% | 0.8% |
| Business | 11.6% | 10.9% | 11.3% | 10.0% | 10.2% | -1.4% |
| Engineering | 11.6% | 11.2% | 10.5% | 9.5% | 9.7% | -1.9% |
| Intra-University | 12.3% | 14.0% | 13.0% | 14.1% | 14.8% | 2.5% |
| Liberal Arts | 11.1% | 11.8% | 12.7% | 12.1% | 12.7% | 1.6% |
| Natural Resources | 7.6% | 8.0% | 8.9% | 7.7% | 6.9% | -0.7% |
| Natural Sciences | 13.5% | 13.3% | 13.4% | 13.9% | 13.6% | 0.1% |
| Veterinary Med & Bio Sci | 13.2% | 14.3% | 15.0% | 14.1% | 18.1% | 4.9% |
| University Summary | 11.2% | 11.5% | 11.8% | 11.5% | 12.0% | 0.8% |

Note: International students are excluded from the base population.

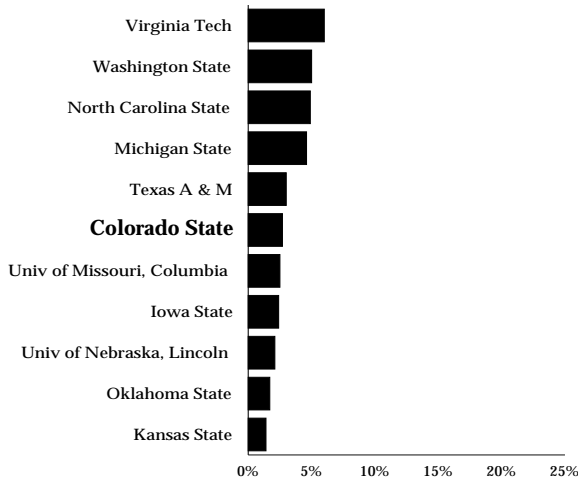
Comparison of Peer Institutions Students by Ethnicity



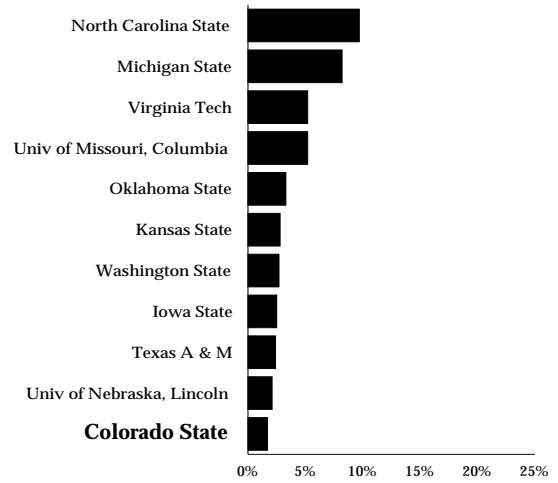
Students by Ethnic Origin

Comparison of Peer Institutions Students by Ethnicity

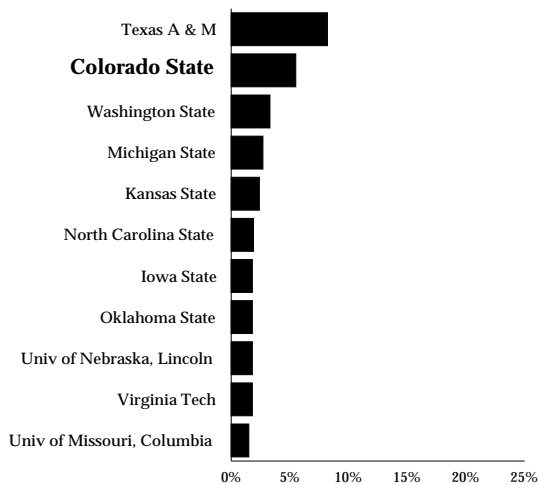
Asian American



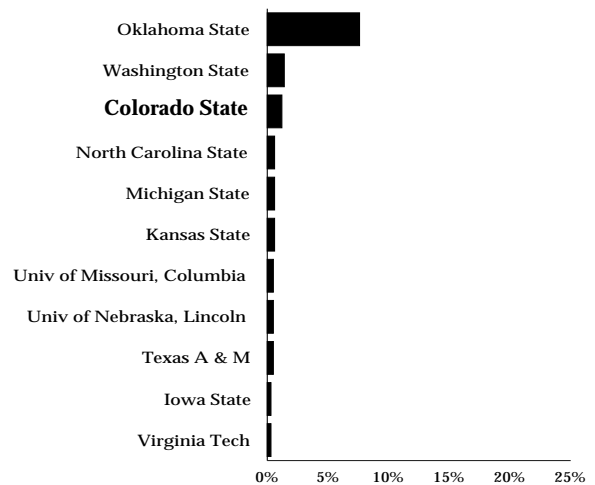
Black



Hispanic



Native American



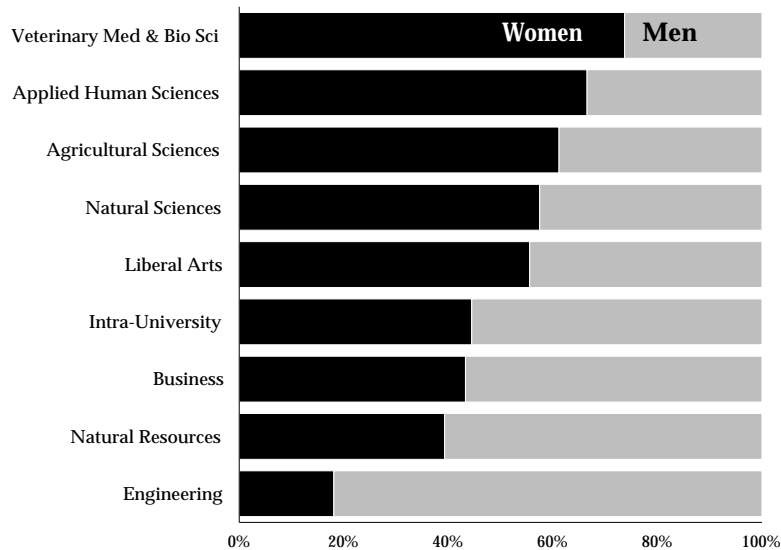
Students by Gender

Students by Gender and College

| | Undergraduate Men | Undergraduate Women | Women as a Percent of Undergraduates | Graduate Men | Graduate Women | Women as a Percent of Graduates |
|--------------------------|-------------------|---------------------|--------------------------------------|--------------|----------------|---------------------------------|
| Agricultural Sciences | 514 | 810 | 61% | 134 | 93 | 41% |
| Applied Human Sciences | 1,047 | 2,082 | 67% | 223 | 562 | 72% |
| Business | 1,152 | 879 | 43% | 107 | 71 | 40% |
| Engineering | 1,226 | 271 | 18% | 444 | 94 | 18% |
| Intra-University | 1,955 | 1,566 | 45% | 114 | 131 | 54% |
| Liberal Arts | 1,887 | 2,360 | 56% | 213 | 307 | 59% |
| Natural Resources | 618 | 400 | 39% | 129 | 108 | 46% |
| Natural Sciences | 1,393 | 1,883 | 58% | 334 | 223 | 40% |
| Veterinary Med & Bio Sci | 138 | 387 | 74% | 138 | 205 | 60% |
| University Summary | 9,930 | 10,638 | 52% | 1,836 | 1,794 | 49% |

Note: PVM is excluded.

Undergraduates by College



Students by Gender

Undergraduates by Gender and Full-Time/Part-Time Status

| | Full-Time Men | Part-Time Men | Percent of Men who are Full-Time | Full-Time Women | Part-Time Women | Percent of Women who are Full-Time |
|--------------------------|---------------|---------------|----------------------------------|-----------------|-----------------|------------------------------------|
| Agricultural Sciences | 449 | 65 | 87% | 738 | 72 | 91% |
| Applied Human Sciences | 905 | 142 | 86% | 1,871 | 211 | 90% |
| Business | 1,086 | 66 | 94% | 835 | 44 | 95% |
| Engineering | 1,128 | 98 | 92% | 259 | 12 | 96% |
| Intra-University | 1,694 | 261 | 87% | 1,393 | 173 | 89% |
| Liberal Arts | 1,689 | 198 | 90% | 2,147 | 213 | 91% |
| Natural Resources | 543 | 75 | 88% | 346 | 54 | 87% |
| Natural Sciences | 1,226 | 167 | 88% | 1,735 | 148 | 92% |
| Veterinary Med & Bio Sci | 123 | 15 | 89% | 364 | 23 | 94% |
| University Summary | 8,843 | 1,087 | 89% | 9,688 | 950 | 91% |

Undergraduates by Gender and Residency

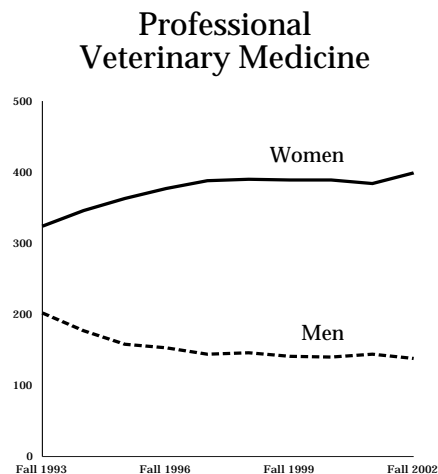
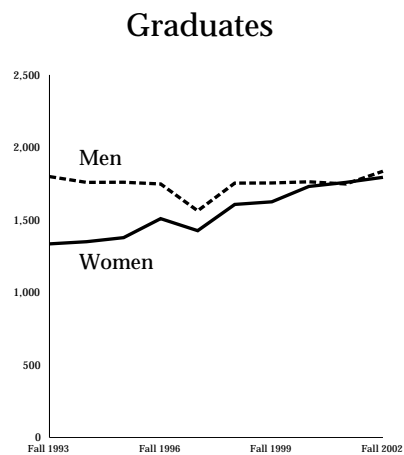
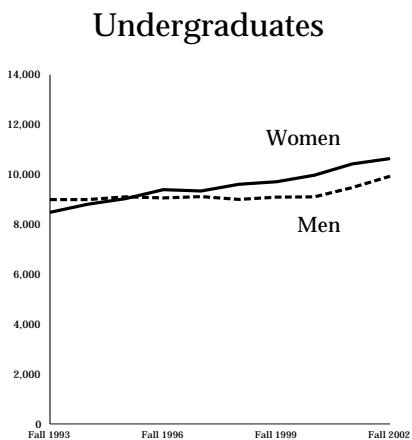
| | Resident Men | Nonresident Men | Percent of Men who are Residents | Resident Women | Nonresident Women | Percent of Women who are Residents |
|--------------------------|--------------|-----------------|----------------------------------|----------------|-------------------|------------------------------------|
| Agricultural Sciences | 392 | 122 | 76% | 514 | 296 | 64% |
| Applied Human Sciences | 872 | 175 | 83% | 1,716 | 366 | 82% |
| Business | 964 | 188 | 84% | 764 | 115 | 87% |
| Engineering | 1,007 | 219 | 82% | 219 | 52 | 81% |
| Intra-University | 1,562 | 393 | 80% | 1,320 | 246 | 84% |
| Liberal Arts | 1,540 | 347 | 82% | 1,971 | 389 | 84% |
| Natural Resources | 418 | 200 | 68% | 255 | 145 | 64% |
| Natural Sciences | 1,148 | 245 | 82% | 1,482 | 401 | 79% |
| Veterinary Med & Bio Sci | 103 | 35 | 75% | 277 | 110 | 72% |
| University Summary | 8,006 | 1,924 | 81% | 8,518 | 2,120 | 80% |

Students by Gender

History of Students by Gender

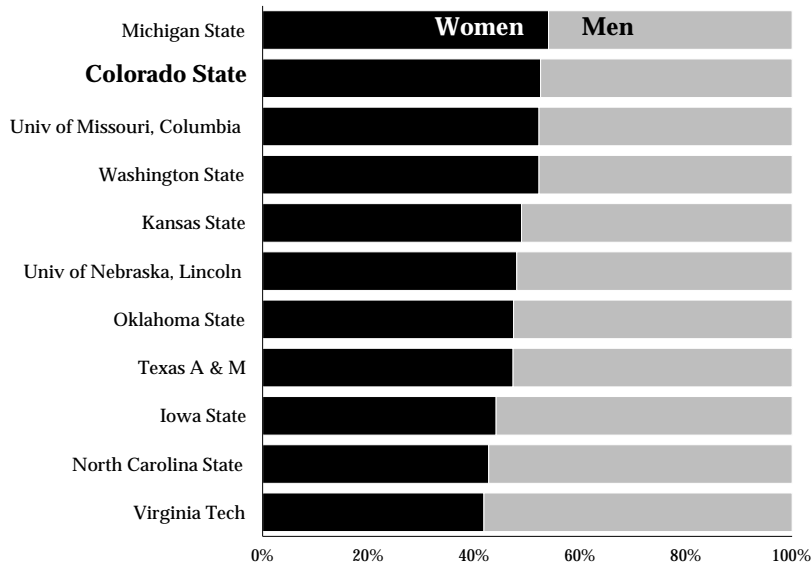
| | Undergraduate Men | Undergraduate Women | Women as a Percent of Undergraduates | Graduate Men | Graduate Women | Women as a Percent of Graduates |
|-----------|-------------------|---------------------|--------------------------------------|--------------|----------------|---------------------------------|
| Fall 1992 | 9,050 | 8,522 | 48.5% | 1,799 | 1,335 | 42.6% |
| Fall 1993 | 8,993 | 8,482 | 48.5% | 1,759 | 1,350 | 43.4% |
| Fall 1994 | 8,993 | 8,807 | 49.5% | 1,760 | 1,378 | 43.9% |
| Fall 1995 | 9,104 | 9,032 | 49.8% | 1,748 | 1,509 | 46.3% |
| Fall 1996 | 9,060 | 9,391 | 50.9% | 1,563 | 1,426 | 47.7% |
| Fall 1997 | 9,113 | 9,338 | 50.6% | 1,754 | 1,607 | 47.8% |
| Fall 1998 | 9,000 | 9,607 | 51.6% | 1,755 | 1,625 | 48.1% |
| Fall 1999 | 9,091 | 9,709 | 51.6% | 1,757 | 1,695 | 49.1% |
| Fall 2000 | 9,103 | 9,972 | 52.3% | 1,763 | 1,731 | 49.5% |
| Fall 2001 | 9,476 | 10,423 | 52.4% | 1,748 | 1,759 | 50.2% |
| Fall 2002 | 9,930 | 10,638 | 51.7% | 1,836 | 1,794 | 49.4% |

Students by Gender



Students by Gender

Comparison of Peer Institutions Students by Gender

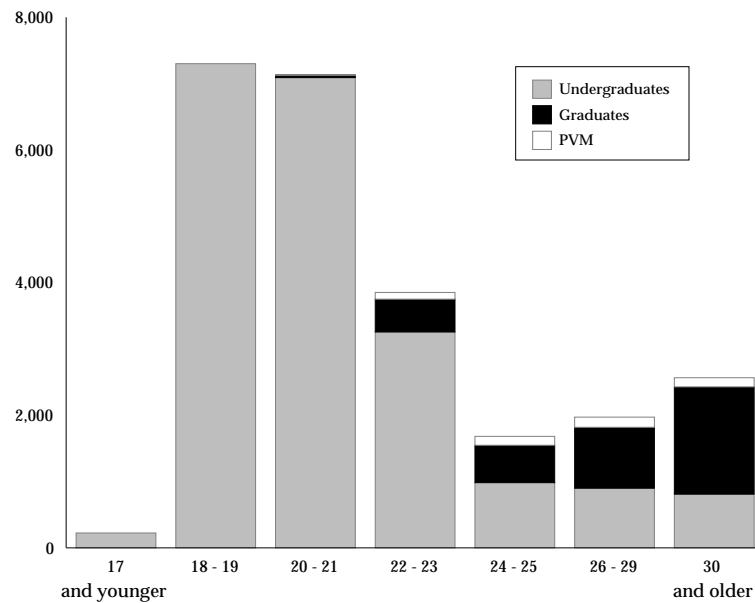


Students by Age

Students by Age and Student Level

| | Undergraduate | Graduate | PVM | Total |
|----------------|---------------|--------------|------------|---------------|
| 17 and younger | 224 | 0 | 0 | 224 |
| 18 - 19 | 7,300 | 0 | 0 | 7,300 |
| 20 - 21 | 7,090 | 35 | 11 | 7,136 |
| 22 - 23 | 3,255 | 495 | 101 | 3,851 |
| 24 - 25 | 983 | 564 | 134 | 1,681 |
| 26 - 29 | 900 | 918 | 153 | 1,971 |
| 30 - 39 | 558 | 1,052 | 119 | 1,729 |
| 40 - 49 | 199 | 419 | 16 | 634 |
| 50 and older | 53 | 146 | 3 | 202 |
| Not reported | 6 | 1 | 0 | 7 |
| Total | 20,568 | 3,630 | 537 | 24,735 |
| Mean Age | 21 | 31 | 27 | 23 |

Students by Age

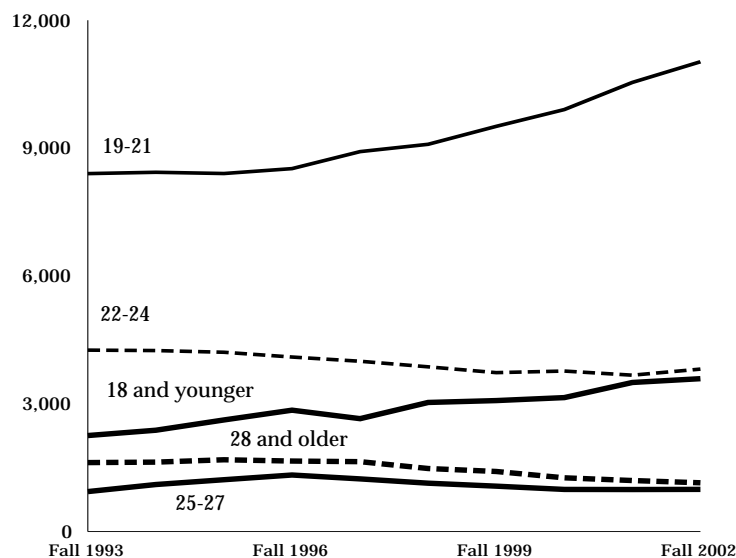


Students by Age

History of Undergraduate Enrollment by Age

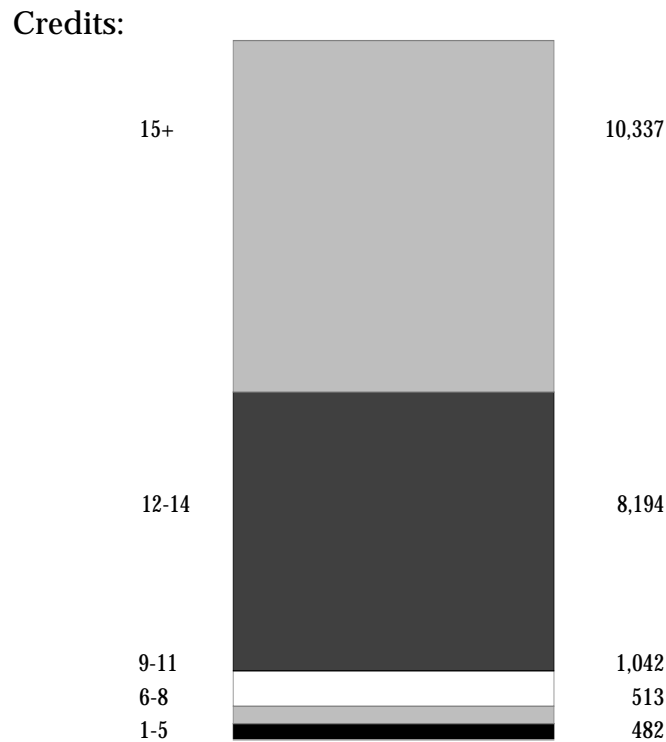
| | Fall 1998 | Fall 1999 | Fall 2000 | Fall 2001 | Fall 2002 | Five-Year Change |
|----------------|---------------|---------------|---------------|---------------|---------------|------------------|
| 17 and younger | 247 | 214 | 189 | 199 | 224 | -9.3% |
| 18 - 19 | 5,709 | 6,149 | 6,428 | 6,894 | 7,300 | 27.9% |
| 20 - 21 | 6,163 | 6,221 | 6,431 | 6,947 | 7,090 | 15.0% |
| 22 - 23 | 3,214 | 3,057 | 3,190 | 3,076 | 3,255 | 1.3% |
| 24 - 25 | 1,121 | 1,119 | 1,013 | 1,013 | 983 | -12.3% |
| 26 - 29 | 1,052 | 1,002 | 902 | 885 | 900 | -14.4% |
| 30 - 39 | 729 | 694 | 632 | 610 | 558 | -23.5% |
| 40 - 49 | 304 | 278 | 231 | 220 | 199 | -34.5% |
| 50 and older | 60 | 56 | 49 | 50 | 53 | -11.7% |
| Not Reported | 8 | 10 | 10 | 5 | 6 | -25.0% |
| Total | 18,607 | 18,800 | 19,075 | 19,899 | 20,568 | 10.5% |
| Mean Age | 22 | 22 | 21 | 21 | 21 | |

History of Undergraduate Students by Age



Undergraduate Students by Full-Time/Part-Time Status

Undergraduates by Credit Load

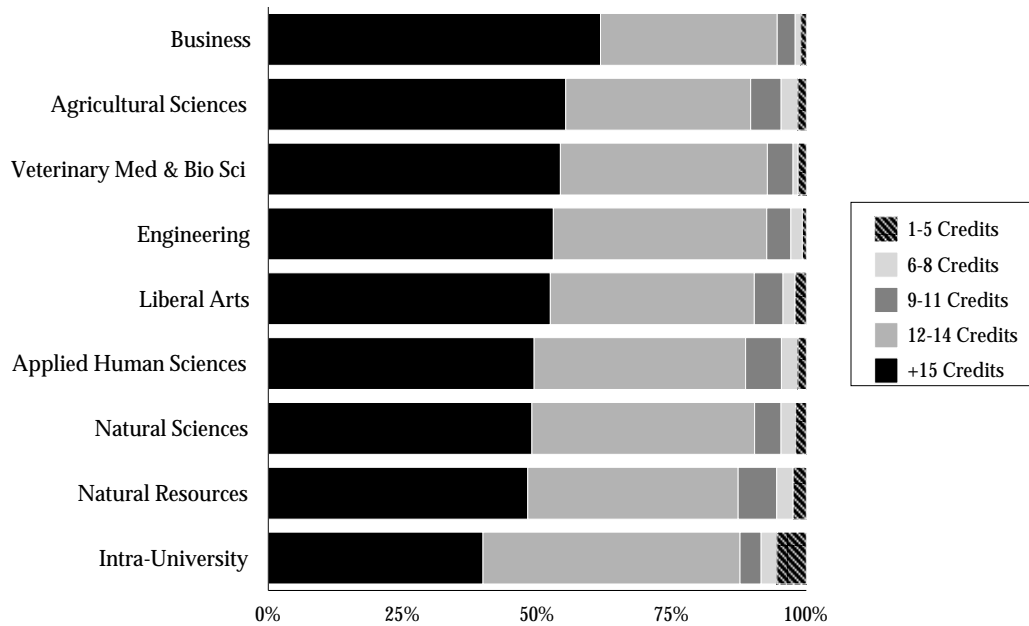


| Full-Time Status | | |
|-----------------------|---------------|--------|
| Fees | (6+ credits) | 20,086 |
| Tuition | (9+ credits) | 19,573 |
| Financial Aid | (12+ credits) | 18,531 |
| Graduation in 4 years | (15+ credits) | 10,337 |

Note: The definition of full-time status for this section is the same criterion used to determine full-time status for financial aid purposes. This policy considers any student taking 12 credits or more as full time. Students with less than six credits are part time for all purposes.

Undergraduate Students by Full-Time/Part-Time Status

Undergraduates by Credit Load



Undergraduates by Full-Time/Part-Time Status

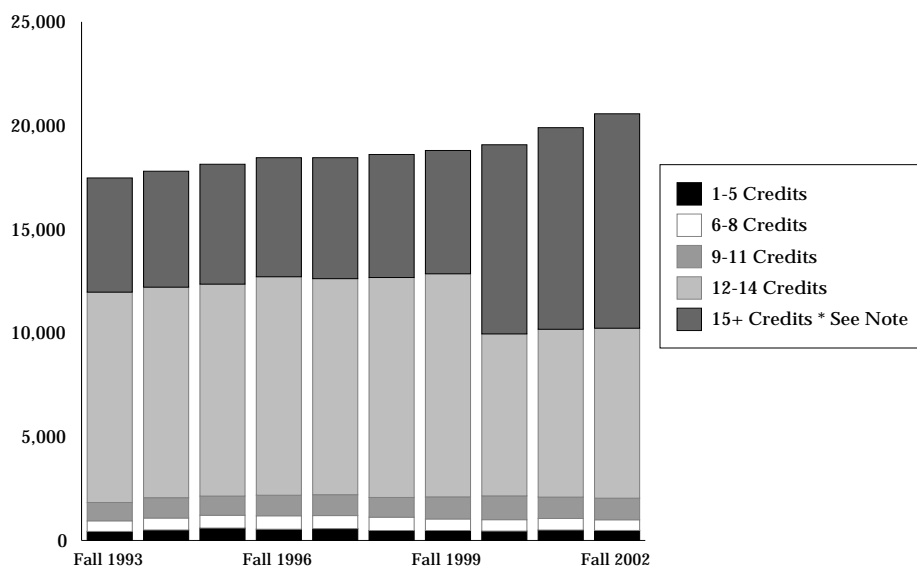
| | Full-Time Men | Part-Time Men | Percent of Men who are Part-Time | Full-Time Women | Part-Time Women | Percent of Women who are Part-Time |
|--------------------------|---------------|---------------|----------------------------------|-----------------|-----------------|------------------------------------|
| Agricultural Sciences | 449 | 65 | 87% | 738 | 72 | 91% |
| Applied Human Sciences | 905 | 142 | 86% | 1,871 | 211 | 90% |
| Business | 1,086 | 66 | 94% | 835 | 44 | 95% |
| Engineering | 1,128 | 98 | 92% | 259 | 12 | 96% |
| Intra-University | 1,694 | 261 | 87% | 1,393 | 173 | 89% |
| Liberal Arts | 1,689 | 198 | 90% | 2,147 | 213 | 91% |
| Natural Resources | 543 | 75 | 88% | 346 | 54 | 87% |
| Natural Sciences | 1,226 | 167 | 88% | 1,735 | 148 | 92% |
| Veterinary Med & Bio Sci | 123 | 15 | 89% | 364 | 23 | 94% |
| University Summary | 8,843 | 1,087 | 89% | 9,688 | 950 | 91% |

Undergraduate Students by Full-Time/Part-Time Status

History of Undergraduates by Full-Time/Part-Time Status

| | Full-Time Students | Part-Time Students | Percent of Students who are Part-Time |
|-----------|--------------------|--------------------|---------------------------------------|
| Fall 1993 | 15,646 | 1,829 | 10.5% |
| Fall 1994 | 15,740 | 2,060 | 11.6% |
| Fall 1995 | 15,995 | 2,141 | 11.8% |
| Fall 1996 | 16,272 | 2,179 | 11.8% |
| Fall 1997 | 16,246 | 2,205 | 12.0% |
| Fall 1998 | 16,534 | 2,073 | 11.1% |
| Fall 1999 | 16,701 | 2,099 | 11.2% |
| Fall 2000 | 16,928 | 2,147 | 11.3% |
| Fall 2001 | 17,809 | 2,090 | 10.5% |
| Fall 2002 | 18,531 | 2,037 | 9.9% |

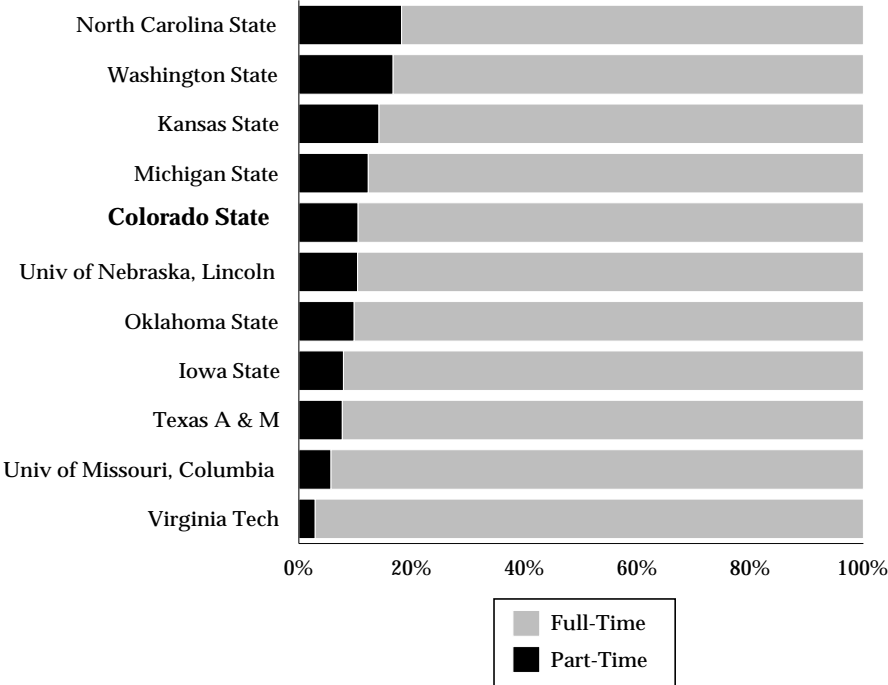
History of Undergraduates by Credit Load



Note: Prior to Fall 2000, the category for 12-14 credits on this graph was 12-15 credits and the 15+ credit category was 16+ credits. In Fall 2000, the total number of credits required to graduate dropped from 128 to 120 making the number of credits per term required to graduate in four years 15 instead of 16.

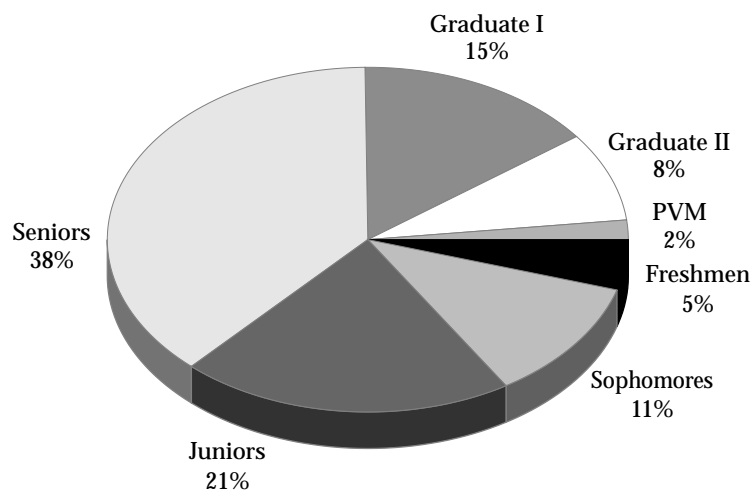
Undergraduate Students by Full-Time/Part-Time Status

Comparison of Peer Institutions Students by Full-Time/Part-Time Status



Summer Session Enrollment

Enrollment by Student Class - Summer 2002



Total Enrollment = 7,397

Total Enrollment by Residency

| | Total Residents | Percent Who are Residents | Total Nonresidents | Percent Who are Nonresidents | Total Enrollment |
|--------------------------|-----------------|---------------------------|--------------------|------------------------------|------------------|
| Agricultural Sciences | 264 | 69% | 121 | 31% | 385 |
| Applied Human Sciences | 1,250 | 85% | 214 | 15% | 1,464 |
| Business | 582 | 89% | 73 | 11% | 655 |
| Engineering | 383 | 74% | 134 | 26% | 517 |
| Intra-University | 794 | 82% | 178 | 18% | 972 |
| Liberal Arts | 1,173 | 85% | 211 | 15% | 1,384 |
| Natural Resources | 294 | 68% | 138 | 32% | 432 |
| Natural Sciences | 862 | 76% | 273 | 24% | 1,135 |
| Veterinary Med & Bio Sci | 290 | 64% | 163 | 36% | 453 |
| Total | 5,892 | 80% | 1,505 | 20% | 7,397 |

Summer Session Enrollment

Undergraduates by Full-Time Status

| | | |
|--------------------------|---------------|-------|
| Fees | (6+ credits) | 2,821 |
| Tuition | (9+ credits) | 1,099 |
| Financial Aid | (12+ credits) | 478 |
| Graduation in Four Years | (16+ credits) | 153 |

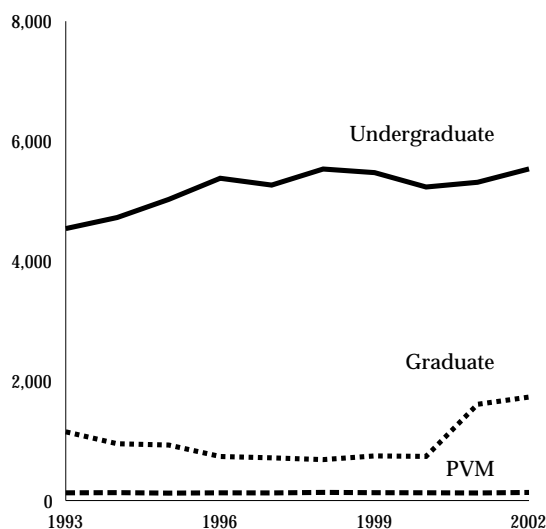
Graduate Student Continuous Registration

| | Graduate Students |
|--------------------------|-------------------|
| Agricultural Sciences | 79 |
| Applied Human Sciences | 88 |
| Business | 11 |
| Engineering | 177 |
| Intra-University | 98 |
| Liberal Arts | 78 |
| Natural Resources | 80 |
| Natural Sciences | 279 |
| Veterinary Med & Bio Sci | 133 |
| Total | 1,023 |

Note: A new policy was implemented in Summer 2001 requiring graduate students who were not formally enrolled for course credits to register under the Continuing Registration procedure. This resulted in the large increase in headcount. Continuous Registration generates no credit hours, therefore, there is no corresponding increase in summer FTE.

Summer Session Enrollment

History of Summer Session Enrollment



History of Summer Session Enrollment

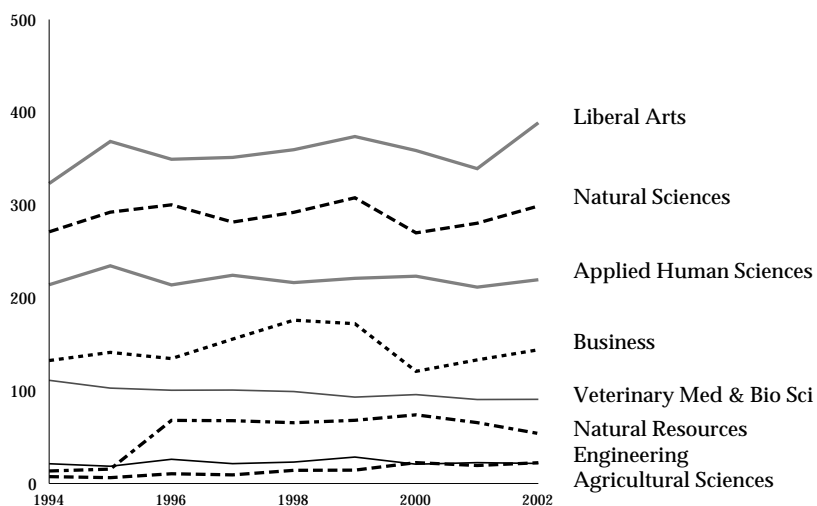
| | Summer 1998 | Summer 1999 | Summer 2000 | Summer 2001 | Summer 2002 | Five-Year Change |
|--------------------------|----------------|----------------|----------------|----------------|----------------|---------------------|
| Agricultural Sciences | 355 | 405 | 385 | 419 | 385 | 8.5% |
| Applied Human Sciences | 1,375 | 1,359 | 1,342 | 1,393 | 1,464 | 6.5% |
| Business | 636 | 692 | 640 | 579 | 655 | 3.0% |
| Engineering | 242 | 262 | 289 | 418 | 517 | 113.6% |
| Intra-University | 917 | 892 | 752 | 860 | 972 | 6.0% |
| Liberal Arts | 1,229 | 1,212 | 1,169 | 1,299 | 1,384 | 12.6% |
| Natural Resources | 467 | 446 | 438 | 520 | 432 | -7.5% |
| Natural Sciences | 756 | 744 | 760 | 1,116 | 1,135 | 50.1% |
| Veterinary Med & Bio Sci | 375 | 337 | 325 | 440 | 453 | 20.8% |
| Total | 6,352 | 6,349 | 6,100 | 7,044 | 7,397 | 16.5% |

Summer Session Enrollment

History of Summer Session FTE

| | Summer 1998 | Summer 1999 | Summer 2000 | Summer 2001 | Summer 2002 | Five-Year Change |
|--------------------------|----------------|----------------|----------------|----------------|----------------|---------------------|
| Agricultural Sciences | 23.1 | 28.5 | 20.8 | 22.5 | 21.6 | -6.5% |
| Applied Human Sciences | 216.5 | 221.1 | 223.4 | 211.6 | 219.6 | 1.4% |
| Business | 176.0 | 172.2 | 120.9 | 133.2 | 144.1 | -18.1% |
| Engineering | 14.2 | 14.4 | 22.5 | 19.4 | 22.4 | 57.7% |
| Intra-University | 0.4 | 0.5 | 0.8 | 0.8 | 3.4 | 750.0% |
| Liberal Arts | 359.7 | 373.9 | 358.8 | 339.3 | 388.7 | 8.1% |
| Natural Resources | 65.5 | 68.1 | 74.0 | 65.6 | 53.9 | -17.7% |
| Natural Sciences | 292.2 | 307.9 | 270.1 | 280.5 | 299.0 | 2.3% |
| Veterinary Med & Bio Sci | 99.1 | 93.1 | 95.8 | 90.5 | 90.7 | -8.5% |
| Total | 1,246.6 | 1,279.7 | 1,187.1 | 1,163.3 | 1,243.4 | -0.3% |

Summer Session FTE

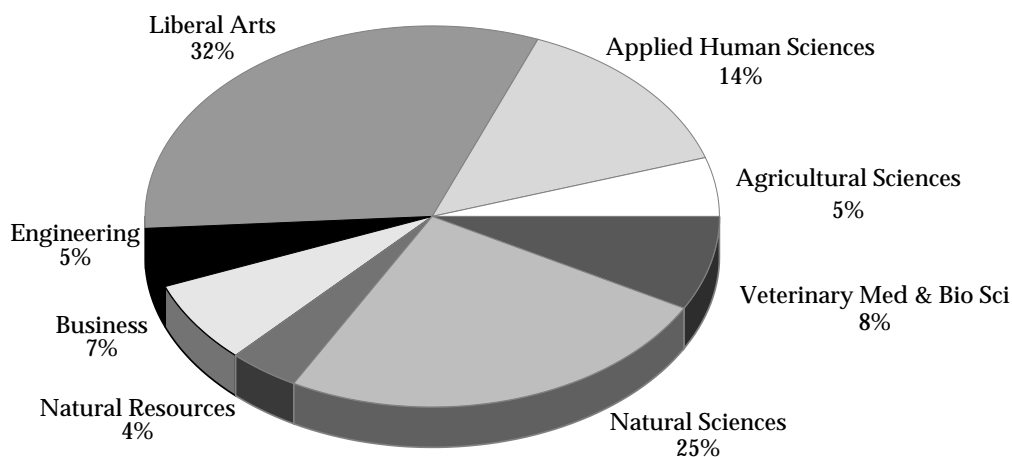


Student Credit Hour Production

Student Credit Hours by College and Course Level - Academic-Year 2001-02

| | Lower Division | Upper Division | Graduate I | Graduate II | Professional Vet Med | Total |
|--------------------------|----------------|----------------|------------|-------------|----------------------|-----------|
| Agricultural Sciences | 12,629.0 | 15,477.5 | 1,804.1 | 780.0 | - | 30,690.7 |
| Applied Human Sciences | 34,372.0 | 38,122.3 | 10,097.5 | 1,102.0 | - | 83,693.8 |
| Business | 15,296.0 | 26,538.0 | 2,572.0 | 0.0 | - | 44,406.0 |
| Engineering | 7,614.0 | 14,639.6 | 5,482.2 | 1,558.0 | - | 29,293.8 |
| Intra-University | 3,075.0 | 679.0 | 232.7 | 38.2 | - | 4,024.8 |
| Liberal Arts | 132,191.0 | 55,975.5 | 5,923.7 | 605.0 | - | 194,695.1 |
| Natural Resources | 10,210.0 | 11,872.6 | 2,537.7 | 427.9 | - | 25,048.2 |
| Natural Sciences | 103,921.2 | 34,798.0 | 6,615.5 | 3,437.2 | - | 148,771.9 |
| Veterinary Med & Bio Sci | 7,676.8 | 13,318.7 | 3,925.5 | 2,801.8 | 20,789.1 | 48,512.0 |
| University Total | 326,985.0 | 211,421.2 | 39,191.0 | 10,750.1 | 20,789.1 | 609,136.3 |

Percentage of Student Credit Hours by College



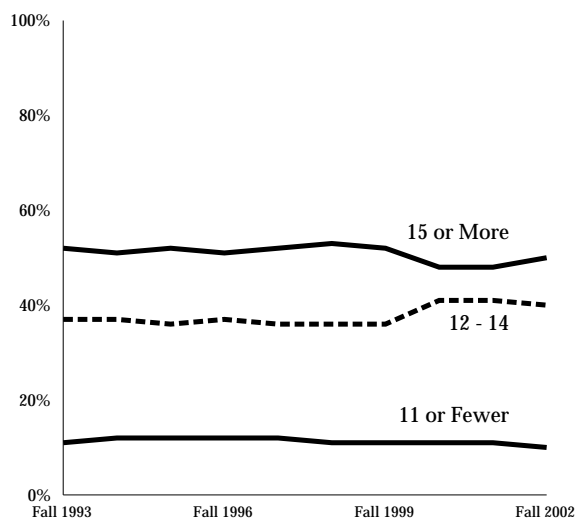
Note: Course credit reassignment is included.

Student Credit Hour Production

Average Credit Hour Load

| | All Undergraduates | New Freshmen |
|--------------------------|--------------------|--------------|
| Agricultural Sciences | 14.4 | 15.1 |
| Applied Human Sciences | 14.0 | 14.5 |
| Business | 14.2 | 15.0 |
| Engineering | 14.4 | 14.8 |
| Intra-University | 13.2 | 13.9 |
| Liberal Arts | 13.9 | 14.3 |
| Natural Resources | 13.9 | 14.3 |
| Natural Sciences | 14.1 | 14.6 |
| Veterinary Med & Bio Sci | 14.3 | 14.7 |
| University Average | 13.9 | 14.4 |

Distribution of Credit Hours for Undergraduates

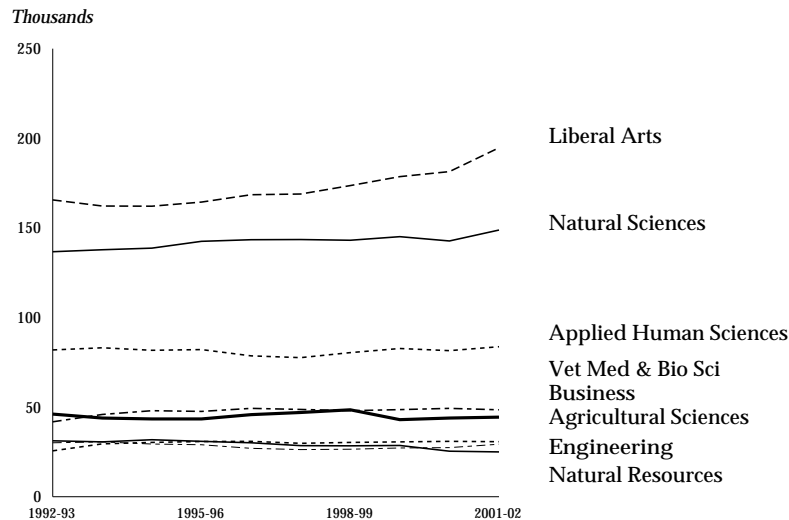


Student Credit Hour Production

History of Student Credit Hour Production by College

| | AY 1997-98 | AY 1998-99 | AY 1999-00 | AY 2000-01 | AY 2001-02 | Five-Year Change |
|--------------------------|---------------|---------------|---------------|---------------|---------------|---------------------|
| Agricultural Sciences | 29,785.0 | 30,323.4 | 30,641.2 | 30,918.4 | 30,690.7 | 3.0% |
| Applied Human Sciences | 77,560.5 | 80,392.6 | 82,704.8 | 81,473.5 | 83,693.8 | 7.9% |
| Business | 47,018.0 | 48,472.0 | 42,982.0 | 43,908.0 | 44,406.0 | -5.6% |
| Engineering | 26,349.3 | 26,525.6 | 27,192.7 | 27,380.7 | 29,293.8 | 11.2% |
| Intra-University | 1,655.5 | 1,789.0 | 1,800.8 | 3,205.0 | 4,024.8 | 143.1% |
| Liberal Arts | 168,854.7 | 173,639.6 | 178,605.7 | 181,412.3 | 194,695.1 | 15.3% |
| Natural Resources | 28,542.9 | 28,363.6 | 28,565.7 | 25,392.3 | 25,048.2 | -12.2% |
| Natural Sciences | 143,502.2 | 143,103.9 | 145,069.1 | 142,690.7 | 148,771.9 | 3.7% |
| Veterinary Med & Bio Sci | 48,622.2 | 48,002.3 | 48,668.4 | 49,261.5 | 48,512.0 | -0.2% |
| University Summary | 571,890.2 | 580,612.0 | 586,230.4 | 585,642.4 | 609,136.3 | 6.5% |

Ten-Year History of Student Credit Hour Production

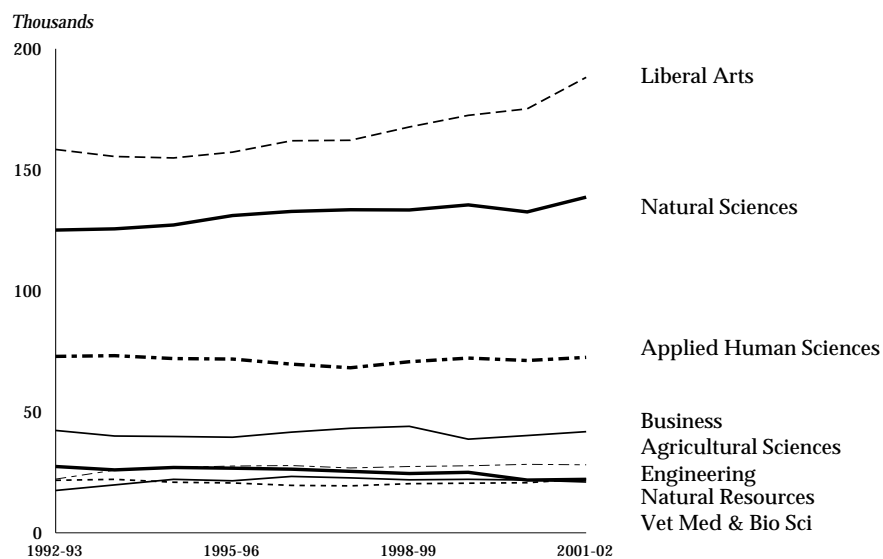


Student Credit Hour Production

Undergraduate Student Credit Hours by College

| | AY 1997-98 | AY 1998-99 | AY 1999-00 | AY 2000-01 | AY 2001-02 | Five-Year Change |
|--------------------------|---------------|---------------|---------------|---------------|---------------|---------------------|
| Agricultural Sciences | 26,756.9 | 27,406.1 | 27,698.8 | 28,321.0 | 28,106.5 | 5.0% |
| Applied Human Sciences | 68,245.6 | 70,703.5 | 72,228.3 | 71,159.9 | 72,494.3 | 6.2% |
| Business | 43,204.0 | 44,001.0 | 38,719.0 | 40,231.0 | 41,834.0 | -3.2% |
| Engineering | 19,356.8 | 20,331.4 | 20,527.2 | 20,706.9 | 22,253.6 | 15.0% |
| Intra-University | 1,560.0 | 1,721.0 | 1,755.0 | 3,147.0 | 3,754.0 | 140.6% |
| Liberal Arts | 162,185.2 | 167,747.1 | 172,492.0 | 175,217.5 | 188,166.5 | 16.0% |
| Natural Resources | 25,380.4 | 24,531.4 | 24,964.2 | 21,843.6 | 22,082.6 | -13.0% |
| Natural Sciences | 133,493.1 | 133,379.6 | 135,467.7 | 132,611.9 | 138,719.2 | 3.9% |
| Veterinary Med & Bio Sci | 22,714.1 | 21,934.0 | 22,091.9 | 21,807.5 | 20,995.5 | -7.6% |
| University Summary | 502,896.0 | 511,755.0 | 515,944.1 | 515,046.2 | 538,406.2 | 7.1% |

Undergraduate Student Credit Hour Production by College

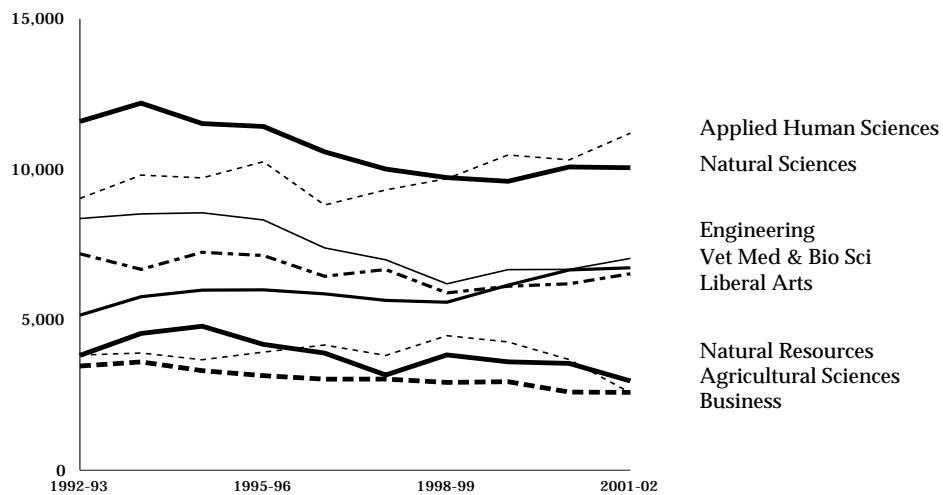


Student Credit Hour Production

Graduate Student Credit Hours by College

| | AY 1997-98 | AY 1998-99 | AY 1999-00 | AY 2000-01 | AY 2001-02 | Five-Year Change |
|--------------------------|---------------|---------------|---------------|---------------|---------------|---------------------|
| Agricultural Sciences | 3,028.0 | 2,917.3 | 2,942.4 | 2,597.4 | 2,584.2 | -14.7% |
| Applied Human Sciences | 9,314.9 | 9,689.1 | 10,476.6 | 10,313.6 | 11,199.5 | 20.2% |
| Business | 3,814.0 | 4,471.0 | 4,263.0 | 3,677.0 | 2,572.0 | -32.6% |
| Engineering | 6,992.5 | 6,194.2 | 6,665.5 | 6,673.8 | 7,040.3 | 0.7% |
| Intra-University | 95.5 | 68.0 | 45.8 | 58.0 | 270.8 | 183.6% |
| Liberal Arts | 6,669.5 | 5,892.5 | 6,113.6 | 6,194.7 | 6,528.7 | -2.1% |
| Natural Resources | 3,162.5 | 3,832.2 | 3,601.5 | 3,548.8 | 2,965.6 | -6.2% |
| Natural Sciences | 10,009.1 | 9,724.3 | 9,601.5 | 10,078.8 | 10,052.7 | 0.4% |
| Veterinary Med & Bio Sci | 5,643.8 | 5,583.3 | 6,149.6 | 6,655.9 | 6,727.3 | 19.2% |
| University Summary | 48,729.8 | 48,372.0 | 49,859.3 | 49,798.1 | 49,941.1 | 2.5% |

Graduate Student Credit Hour Production by College



Note: PVM is excluded from the graduate student credit hours production.

Student Credit Hour Production

Student Credit Hours by Student Level

| | AY 1997-98 | AY 1998-99 | AY 1999-00 | AY 2000-01 | AY 2001-02 | Five-Year Change |
|------------------|---------------|---------------|---------------|---------------|---------------|---------------------|
| Freshman | 106,275.0 | 116,442.0 | 120,086.0 | 122,531.0 | 139,172.0 | 31.0% |
| Sophomore | 112,605.0 | 109,116.0 | 114,850.0 | 118,237.0 | 119,116.0 | 5.8% |
| Junior | 114,146.0 | 115,619.0 | 112,527.0 | 116,461.0 | 120,971.0 | 6.0% |
| Senior | 164,992.0 | 164,233.0 | 163,625.0 | 153,334.0 | 155,125.0 | -6.0% |
| Masters | 37,890.0 | 39,074.0 | 39,524.0 | 38,855.0 | 37,553.0 | -0.9% |
| Doctorate | 15,699.0 | 15,605.0 | 15,166.0 | 15,439.0 | 16,383.0 | 4.4% |
| Professional | 20,283.0 | 20,523.0 | 20,452.0 | 20,785.0 | 20,816.0 | 2.6% |
| University Total | 571,890.0 | 580,612.0 | 586,230.0 | 585,642.0 | 609,136.0 | 6.5% |

Change in Student Credit Hours From Previous Year

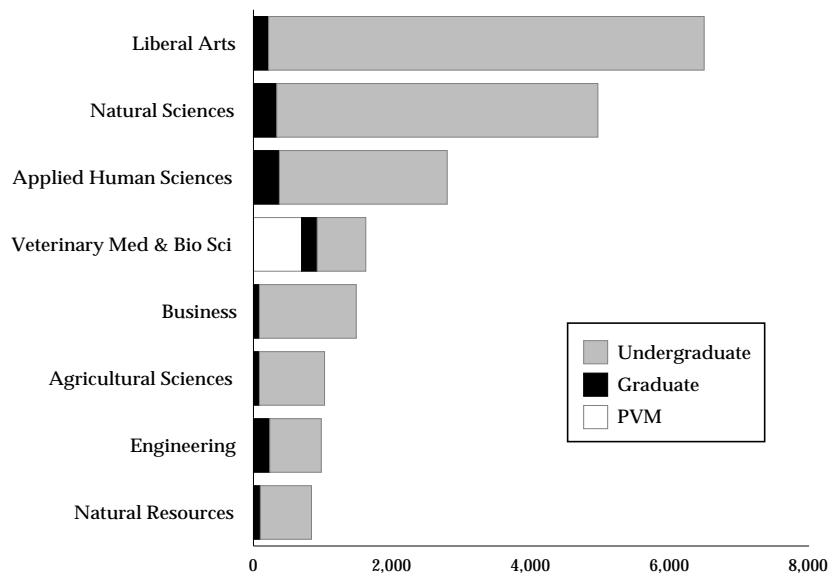
| | Total Credit Hours | Total Change | Percent Change |
|------------|--------------------|--------------|----------------|
| AY 1993-94 | 564,798.4 | 4,236.2 | 0.8% |
| AY 1994-95 | 567,034.5 | 2,236.1 | 0.4% |
| AY 1995-96 | 572,257.1 | 5,222.6 | 0.9% |
| AY 1996-97 | 575,651.6 | 3,394.5 | 0.6% |
| AY 1997-98 | 571,890.2 | -3,761.4 | -0.7% |
| AY 1998-99 | 580,612.0 | 8,721.8 | 1.5% |
| AY 1999-00 | 586,230.4 | 5,618.4 | 1.0% |
| AY 2000-01 | 585,756.0 | -474.4 | -0.1% |
| AY 2001-02 | 609,136.3 | 23,380.3 | 4.0% |

Student FTE Production

FTE by College and Course Level - Academic-Year 2001-02

| | Lower Division | Upper Division | Graduate I | Graduate II | Professional Vet Med | Total FTE |
|--------------------------|----------------|----------------|------------|-------------|----------------------|-----------|
| Agricultural Sciences | 421.0 | 515.9 | 60.1 | 26.0 | - | 1,023.0 |
| Applied Human Sciences | 1,145.7 | 1,270.7 | 336.6 | 36.6 | - | 2,789.6 |
| Business | 509.9 | 884.6 | 85.6 | 0.0 | - | 1,480.1 |
| Engineering | 253.8 | 488.0 | 182.7 | 51.9 | - | 976.4 |
| Intra-University | 102.5 | 22.6 | 7.8 | 1.3 | - | 134.2 |
| Liberal Arts | 4,406.4 | 1,865.9 | 197.5 | 20.2 | - | 6,490.0 |
| Natural Resources | 340.3 | 395.8 | 84.6 | 14.3 | - | 835.0 |
| Natural Sciences | 3,464.0 | 1,159.9 | 220.5 | 114.6 | - | 4,959.1 |
| Veterinary Med & Bio Sci | 255.9 | 444.0 | 130.9 | 93.4 | 693.0 | 1,617.1 |
| University Total | 10,899.5 | 7,047.4 | 1,306.3 | 358.3 | 693.0 | 20,304.5 |

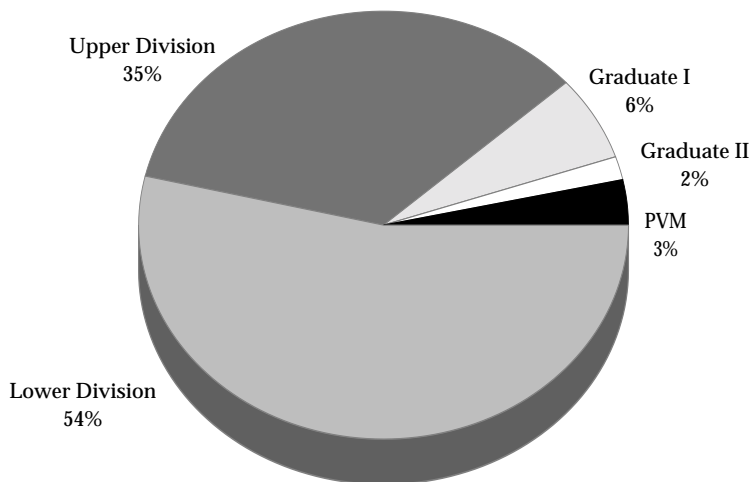
Course Level FTE by College



Note: FTE (Full-Time Equivalent) students are calculated by dividing student credit hours generated by 30. Course credit reassignment is included.

Student FTE Production

Student FTE by Course Level



Total = 20,304.5

History of Student FTE by Student Level and Residency

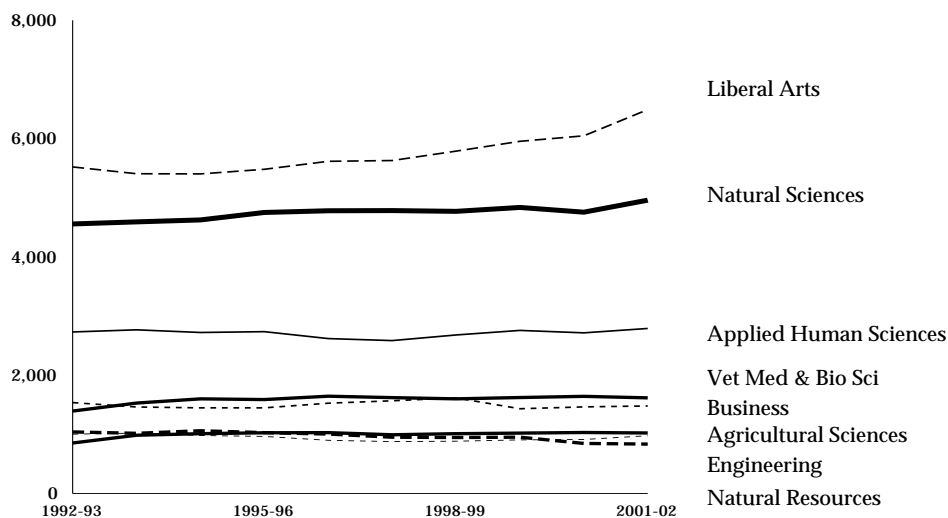
| | AY 1997-98 | AY 1998-99 | AY 1999-00 | AY 2000-01 | AY 2001-02 | Five-Year Change |
|---------------------------------|---------------|---------------|---------------|---------------|---------------|---------------------|
| Undergraduate Resident | 12,987.2 | 13,279.4 | 13,489.8 | 13,524.6 | 14,120.2 | 8.7% |
| Undergraduate Nonresident | 3,613.4 | 3,567.6 | 3,546.5 | 3,494.2 | 3,692.6 | 2.2% |
| Graduate Resident | 1,148.8 | 1,172.4 | 1,158.0 | 1,140.9 | 1,136.0 | -1.1% |
| Graduate Nonresident | 638.2 | 653.3 | 667.7 | 670.1 | 662.9 | 3.9% |
| Prof Veterinary Med Resident | 327.2 | 355.3 | 374.1 | 395.0 | 391.3 | 19.6% |
| Prof Veterinary Med Nonresident | 348.3 | 325.7 | 304.9 | 300.4 | 301.5 | -13.4% |
| Total Resident | 14,463.2 | 14,807.1 | 15,021.9 | 15,060.5 | 15,647.5 | 8.2% |
| Total Nonresident | 4,599.8 | 4,546.6 | 4,519.1 | 4,464.7 | 4,657.0 | 1.2% |
| Total | 19,063.0 | 19,353.7 | 19,541.0 | 19,525.2 | 20,304.5 | 6.5% |

Student FTE Production

Student FTE by College

| | AY 1997-98 | AY 1998-99 | AY 1999-00 | AY 2000-01 | AY 2001-02 | Five-Year Change |
|--------------------------|---------------|---------------|---------------|---------------|---------------|---------------------|
| Agricultural Sciences | 992.8 | 1,010.8 | 1,021.4 | 1,030.6 | 1,023.0 | 3.0% |
| Applied Human Sciences | 2,585.3 | 2,679.8 | 2,756.8 | 2,715.8 | 2,789.6 | 7.9% |
| Business | 1,567.3 | 1,615.7 | 1,432.7 | 1,463.6 | 1,480.1 | -5.6% |
| Engineering | 878.3 | 884.2 | 906.4 | 912.7 | 976.4 | 11.2% |
| Intra-University | 55.2 | 59.6 | 60.0 | 106.8 | 134.2 | 143.1% |
| Liberal Arts | 5,628.5 | 5,788.0 | 5,953.5 | 6,047.1 | 6,490.0 | 15.3% |
| Natural Resources | 951.4 | 945.5 | 952.2 | 846.4 | 835.0 | -12.2% |
| Natural Sciences | 4,783.4 | 4,770.1 | 4,835.6 | 4,756.4 | 4,959.1 | 3.7% |
| Veterinary Med & Bio Sci | 1,620.8 | 1,600.0 | 1,622.3 | 1,642.1 | 1,617.1 | -0.2% |
| University Total | 19,063.0 | 19,353.7 | 19,541.0 | 19,521.4 | 20,304.5 | 6.5% |

Student FTE History by College

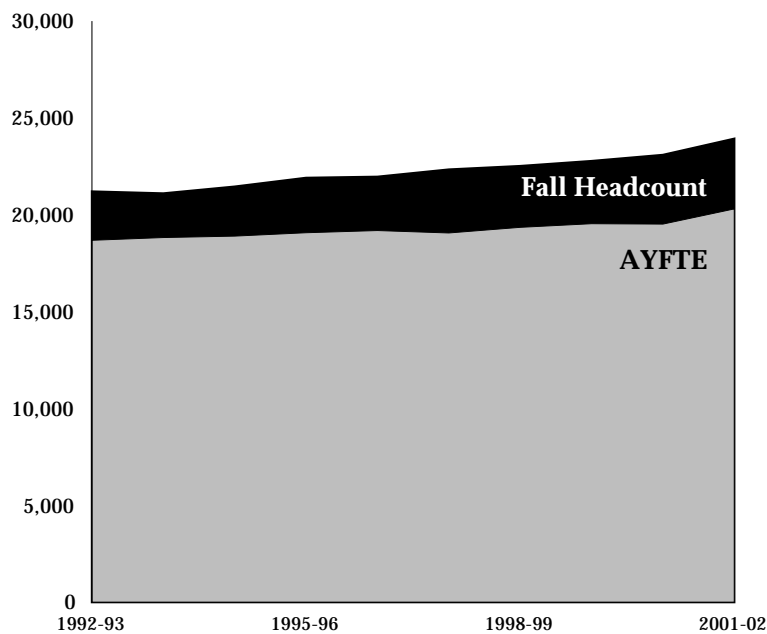


Student FTE Production

History of Student FTE by Course Level

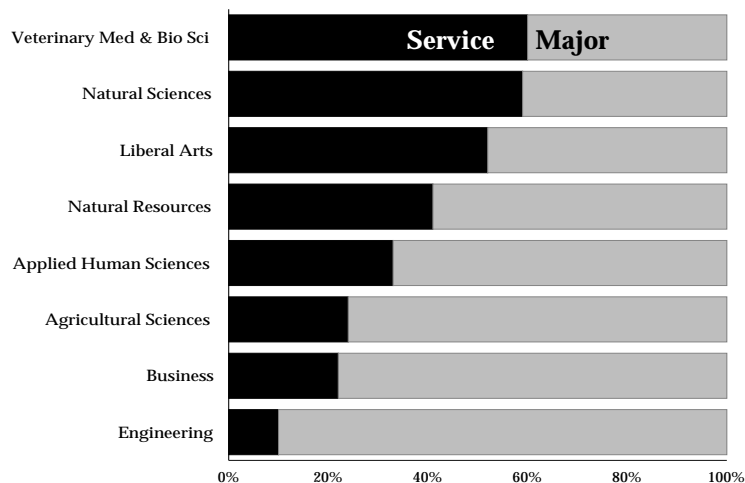
| | AY 1997-98 | AY 1998-99 | AY 1999-00 | AY 2000-01 | AY 2001-02 | Five-Year Change |
|-----------------------------|---------------|---------------|---------------|---------------|---------------|---------------------|
| Lower Division | 9,621.0 | 10,028.5 | 10,190.6 | 10,267.7 | 10,899.5 | 13.3% |
| Upper Division | 7,071.6 | 7,142.2 | 7,030.0 | 7,007.5 | 7,047.4 | -0.3% |
| Undergraduate Total | 16,692.6 | 17,170.7 | 17,220.6 | 17,275.2 | 17,946.9 | 7.5% |
| Graduate I Division | 1,235.9 | 1,298.8 | 1,319.8 | 1,300.6 | 1,306.4 | 5.7% |
| Graduate II Division | 388.4 | 313.6 | 342.1 | 359.3 | 358.3 | -7.7% |
| Graduate Total | 1,624.3 | 1,612.4 | 1,662.0 | 1,659.9 | 1,664.7 | 2.5% |
| Professional Veterinary Med | 675.5 | 682.8 | 680.9 | 694.5 | 693.0 | 2.6% |
| University Total | 19,063.0 | 19,353.7 | 19,541.0 | 19,525.2 | 20,304.5 | 6.5% |

Academic-Year FTE and Fall Headcount Comparison

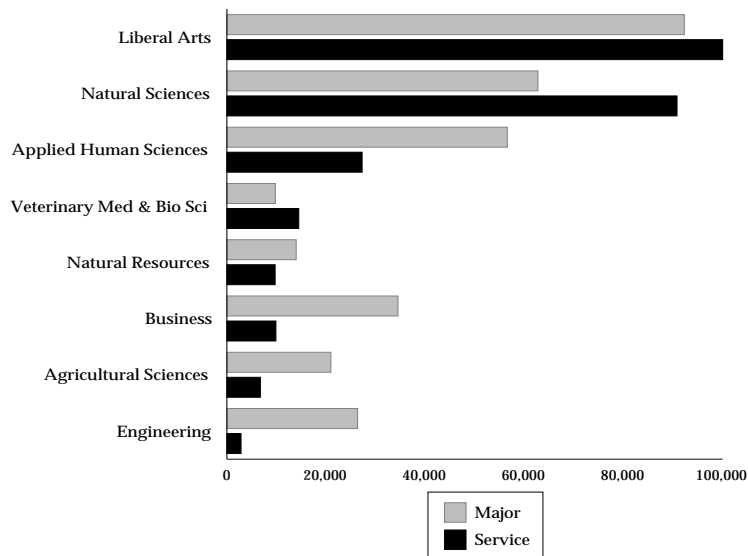


Service Load Summary

Service Load for AY 2001-02



Student Credit Hours



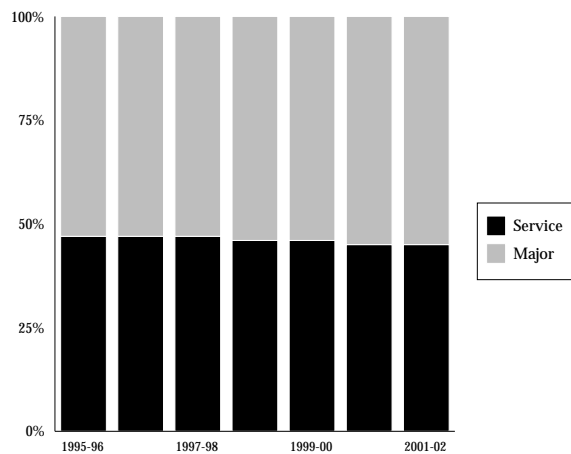
Note: Service equals the percentage of student credit hours taught to students outside the major college and major indicates the percentage of student credit hours taught to students within the major college. PVM is excluded.

Service Load Summary

History of Student Credit Hours Generated by Majors Outside the College

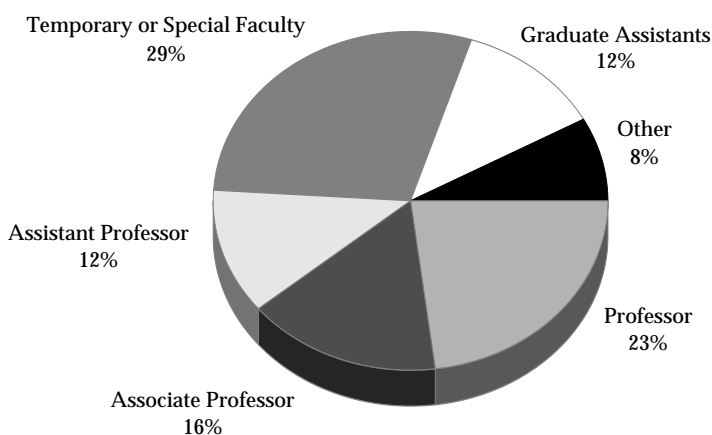
| | AY 1997-98 | AY 1998-99 | AY 1999-00 | AY 2000-01 | AY 2001-02 |
|--------------------------|---------------|---------------|---------------|---------------|---------------|
| Agricultural Sciences | 22% | 20% | 19% | 22% | 24% |
| Applied Human Sciences | 29% | 31% | 32% | 31% | 33% |
| Business | 35% | 29% | 18% | 20% | 22% |
| Engineering | 11% | 11% | 11% | 10% | 10% |
| Intra-University | 74% | 70% | 67% | 60% | 59% |
| Liberal Arts | 53% | 53% | 53% | 52% | 52% |
| Natural Resources | 34% | 34% | 38% | 37% | 41% |
| Natural Sciences | 63% | 64% | 63% | 60% | 59% |
| Veterinary Med & Bio Sci | 61% | 66% | 58% | 59% | 60% |

History of Student Credit Hours Taken in the Major College and Outside the Major College



Undergraduate Credit Hour Production by Faculty Type

Undergraduate Credit Hours Taught by Faculty Type



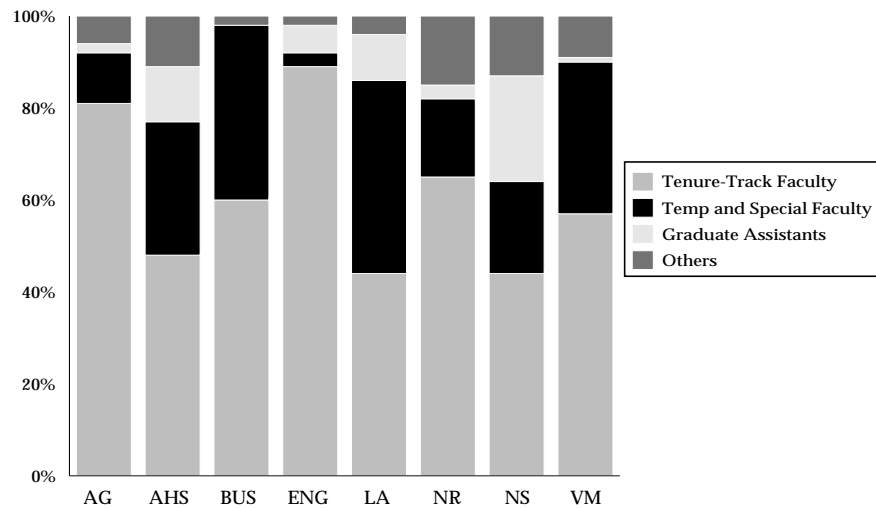
Percentage of Undergraduate Credit Hours Taught by Faculty Type

| | Professor | Associate Professor | Assistant Professor | Temporary/ Special | Graduate Assistant | Other |
|--------------------------|-----------|---------------------|---------------------|-----------------------|--------------------|-------|
| Agricultural Sciences | 44% | 17% | 19% | 11% | 3% | 6% |
| Applied Human Sciences | 17% | 18% | 13% | 29% | 12% | 11% |
| Business | 24% | 16% | 19% | 39% | 0% | 2% |
| Engineering | 54% | 27% | 8% | 3% | 6% | 2% |
| Intra-University | 13% | 13% | 1% | 19% | 1% | 53% |
| Liberal Arts | 17% | 16% | 12% | 41% | 10% | 4% |
| Natural Resources | 40% | 10% | 15% | 17% | 3% | 15% |
| Natural Sciences | 22% | 13% | 9% | 20% | 23% | 13% |
| Veterinary Med & Bio Sci | 22% | 34% | 1% | 33% | 1% | 9% |
| University Summary | 23% | 16% | 11% | 29% | 12% | 9% |

Note: The Other category consists of faculty affiliates, administrative professionals, post doctorates and state classified staff.

Undergraduate Credit Hour Production by Faculty Type

Credit Hours Taught by College and Faculty Type

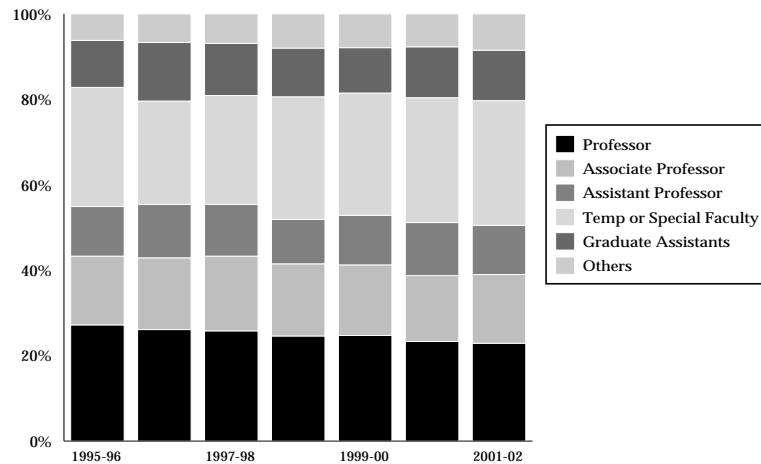


History of Undergraduate Credit Hours by Faculty Type

| | Professor | Associate Professor | Assistant Professor | Temporary/ Special | Graduate Assistant | Other |
|------------|-----------|---------------------|---------------------|-----------------------|--------------------|-------|
| AY 1995-96 | 27.2% | 16.1% | 11.6% | 27.8% | 11.0% | 6.3% |
| AY 1996-97 | 26.1% | 16.8% | 12.5% | 24.2% | 13.7% | 6.6% |
| AY 1997-98 | 25.8% | 17.5% | 12.1% | 25.5% | 12.2% | 6.8% |
| AY 1998-99 | 24.6% | 16.9% | 10.4% | 28.7% | 11.4% | 8.0% |
| AY 1999-00 | 24.7% | 16.5% | 11.6% | 28.6% | 10.6% | 7.9% |
| AY 2000-01 | 23.3% | 15.4% | 12.4% | 29.2% | 11.9% | 7.7% |
| AY 2001-02 | 22.9% | 16.1% | 11.5% | 29.2% | 11.8% | 8.5% |

Undergraduate Credit Hour Production by Faculty Type

Undergraduate Credit Hours Taught by Faculty Type

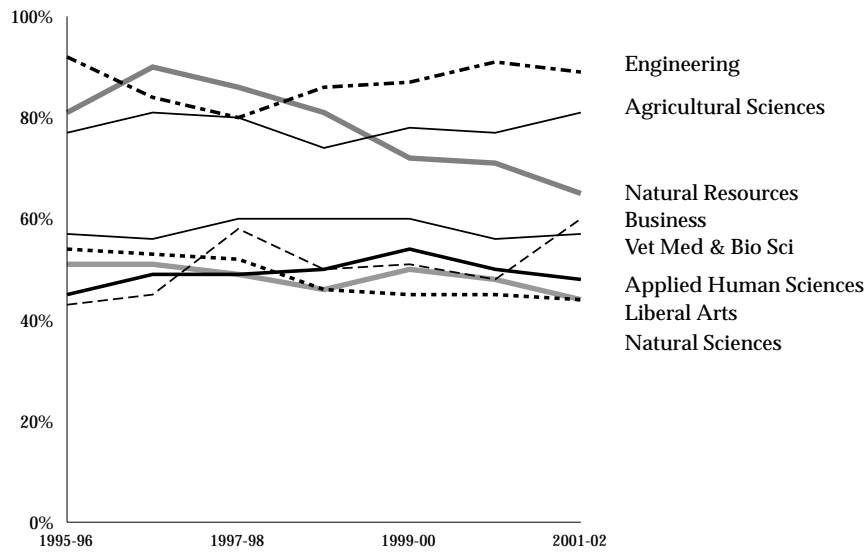


History of Undergraduate Credit Hours Taught by Tenure-Track Faculty

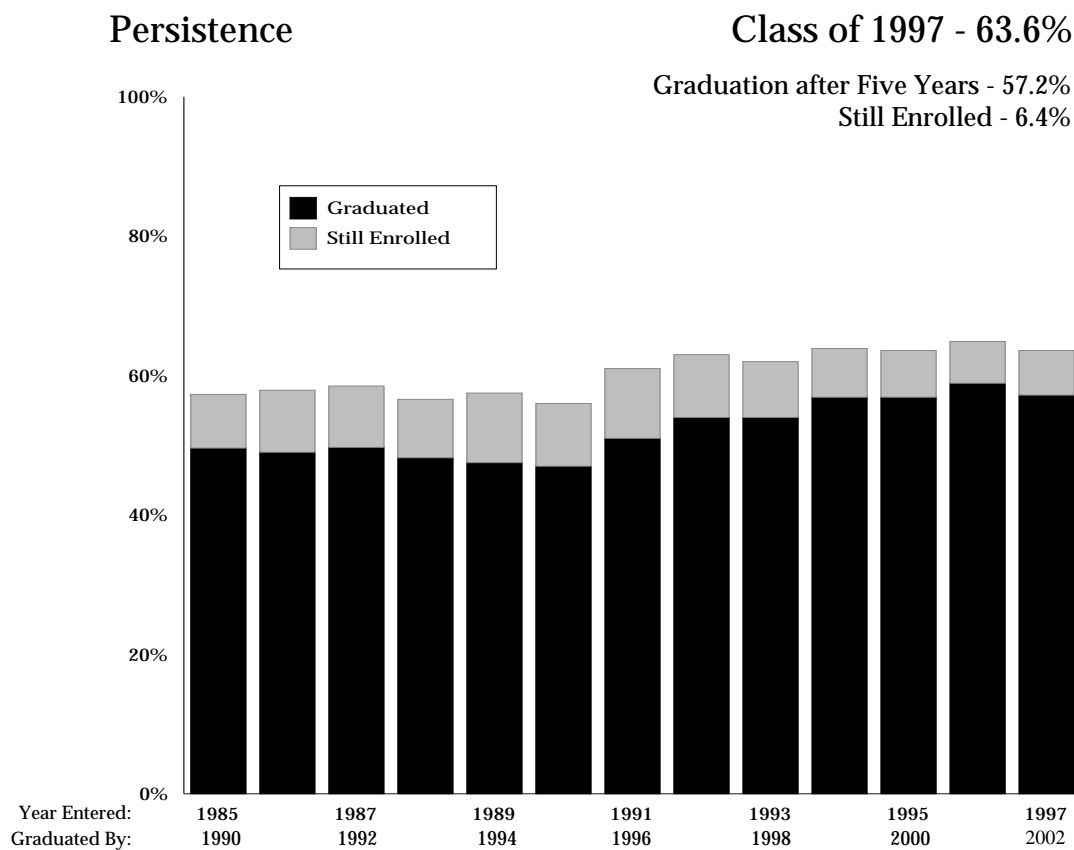
| | AY 1997-98 | AY 1998-99 | AY 1999-00 | AY 2000-01 | AY 2001-02 | Five-Year Change |
|--------------------------|---------------|---------------|---------------|---------------|---------------|---------------------|
| Agricultural Sciences | 79.8% | 73.7% | 78.0% | 76.7% | 80.5% | 0.7% |
| Applied Human Sciences | 49.2% | 50.0% | 53.5% | 49.5% | 47.9% | -1.3% |
| Business | 58.3% | 49.7% | 51.0% | 48.3% | 59.7% | 1.4% |
| Engineering | 79.9% | 86.3% | 87.2% | 90.5% | 88.5% | 8.6% |
| Intra-University | 21.0% | 17.2% | 19.5% | 33.9% | 27.4% | 6.4% |
| Liberal Arts | 52.0% | 46.4% | 44.7% | 44.5% | 44.3% | -7.7% |
| Natural Resources | 86.2% | 80.6% | 71.5% | 71.0% | 65.1% | -21.1% |
| Natural Sciences | 48.9% | 45.8% | 49.9% | 48.0% | 43.6% | -5.3% |
| Veterinary Med & Bio Sci | 59.6% | 59.7% | 59.7% | 56.0% | 57.4% | -2.2% |
| University Summary | 55.4% | 51.9% | 52.8% | 51.1% | 50.5% | -4.9% |

Undergraduate Credit Hour Production by Faculty Type

History of Undergraduate Credit Hours Taught by Tenure-Track Faculty



Persistence of New Freshmen



Note: Persistence includes students who have graduated and those still enrolled at the end of the five-year study period, which includes summer.

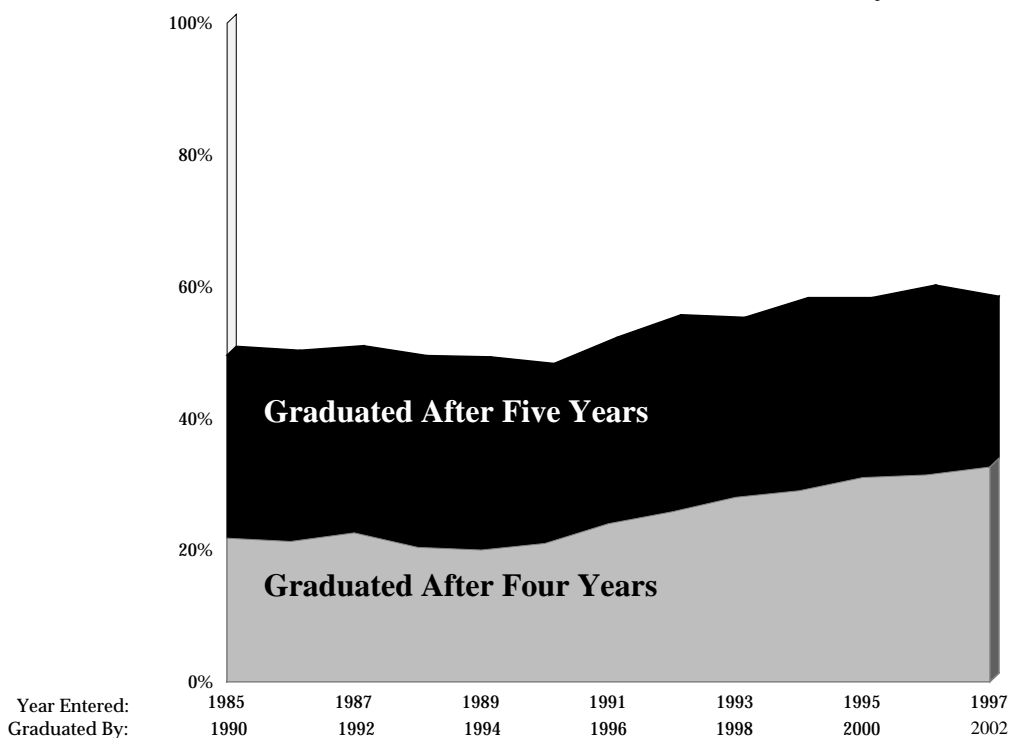
Persistence of New Freshmen

Graduation

Class of 1997 - 58%

After 4 years - 33%

After 5 years - 25%



Note: A student has graduated if he or she receives a bachelor's degree after four or five calendar years. The last summer session after the four- or five-year period is included for determining graduation rates.

Persistence of New Freshmen

Graduation

| | | Graduated After Four Years | Graduated After Five Years | | Graduated After Six Years | | Graduated After Seven Years | | Graduated After More Than Seven Years | |
|--------------|--------------|----------------------------|----------------------------|---------------------|---------------------------|---------------------|-----------------------------|---------------------|---------------------------------------|-------------------------|
| Fall Entered | New Freshmen | Four-Year Rate | Five-Year Rate | Total After 5 Years | Six-Year Rate | Total After 6 Years | Seven-Year Rate | Total After 7 Years | More Than 7-Year Rate | Total More Than 7 Years |
| 1984 | 2,645 | 22.5% | 27.4% | 49.9% | 5.9% | 55.8% | 1.2% | 57.0% | 2.2% | 59.2% |
| 1985 | 2,638 | 21.8% | 27.8% | 49.6% | 5.1% | 54.7% | 1.9% | 56.6% | 2.6% | 59.2% |
| 1986 | 2,749 | 21.3% | 27.7% | 49.0% | 6.0% | 55.0% | 2.0% | 57.0% | 2.3% | 59.3% |
| 1987 | 2,869 | 22.6% | 27.1% | 49.7% | 6.3% | 56.0% | 2.1% | 58.1% | 2.4% | 60.5% |
| 1988 | 3,207 | 20.4% | 27.8% | 48.2% | 6.0% | 54.2% | 1.8% | 56.0% | 2.0% | 58.0% |
| 1989 | 2,917 | 19.9% | 27.6% | 47.5% | 6.3% | 53.8% | 1.8% | 55.6% | 2.3% | 57.9% |
| 1990 | 2,126 | 20.9% | 26.6% | 47.5% | 5.7% | 53.2% | 1.7% | 54.9% | 1.6% | 56.5% |
| 1991 | 2,195 | 23.8% | 27.0% | 50.8% | 6.6% | 57.4% | 1.9% | 59.3% | 2.0% | 61.3% |
| 1992 | 2,225 | 25.8% | 28.6% | 54.4% | 5.9% | 60.3% | 2.3% | 62.6% | 1.1% | 63.7% |
| 1993 | 2,194 | 28.1% | 25.5% | 53.6% | 6.0% | 59.6% | 1.7% | 61.3% | 1.0% | 62.3% |
| 1994 | 2,295 | 29.2% | 27.7% | 56.9% | 5.0% | 61.9% | 1.3% | 63.8% | 0.8% | 64.0% |
| 1995 | 2,594 | 31.3% | 25.6% | 56.9% | 4.9% | 61.8% | 1.0% | 62.8% | | |
| 1996 | 2,733 | 31.4% | 27.5% | 58.9% | 4.0% | 63.0% | | | | |
| 1997 | 2,654 | 32.6% | 24.6% | 57.2% | | | | | | |

Note: Graduation includes all degrees received through summer semester 2002. Four-year rates include CSU undergraduates enrolled in the Professional Veterinary Program before completing a bachelor's degree.

Persistence of New Freshmen

Persistence by Semester

| Entered Fall | New Freshmen | Percent Returned: | | | | | | | | | |
|--------------|--------------|-------------------|------------|--------|------------|--------|----------|--------|----------|--------|----------|
| | | Next Spring | 2nd Fall | Spring | 3rd Fall | Spring | 4th Fall | Spring | 5th Fall | Spring | 6th Fall |
| 1990 | 2,126 | 94% | 80% | 72% | 64% | 62% | 60% | 60% | 59% | 58% | 56% |
| 1991 | 2,195 | 94% | 80% | 73% | 68% | 65% | 64% | 63% | 62% | 61% | 60% |
| 1992 | 2,225 | 95% | 83% | 77% | 70% | 67% | 66% | 66% | 65% | 64% | 63% |
| 1993 | 2,194 | 95% | 81% | 74% | 67% | 64% | 64% | 64% | 63% | 62% | 61% |
| 1994 | 2,295 | 94% | 83% | 76% | 69% | 66% | 66% | 66% | 65% | 64% | 64% |
| 1995 | 2,594 | 94% | 82% | 75% | 70% | 67% | 66% | 66% | 66% | 65% | 63% |
| 1996 | 2,733 | 94% | 82% | 76% | 70% | 67% | 67% | 67% | 65% | 65% | 65% |
| 1997 | 2,654 | 93% | 81% | 75% | 69% | 66% | 65% | 66% | 64% | 64% | 64% |
| 1998 | 3,056 | 94% | 82% | 76% | 70% | 66% | 67% | 67% | 66% | | |
| 1999 | 3,137 | 94% | 82% | 76% | 70% | 66% | 67% | | | | |
| 2000 | 3,314 | 94% | 81% | 75% | 69% | | | | | | |
| 2001 | 3,720 | 94% | 82% | | | | | | | | |

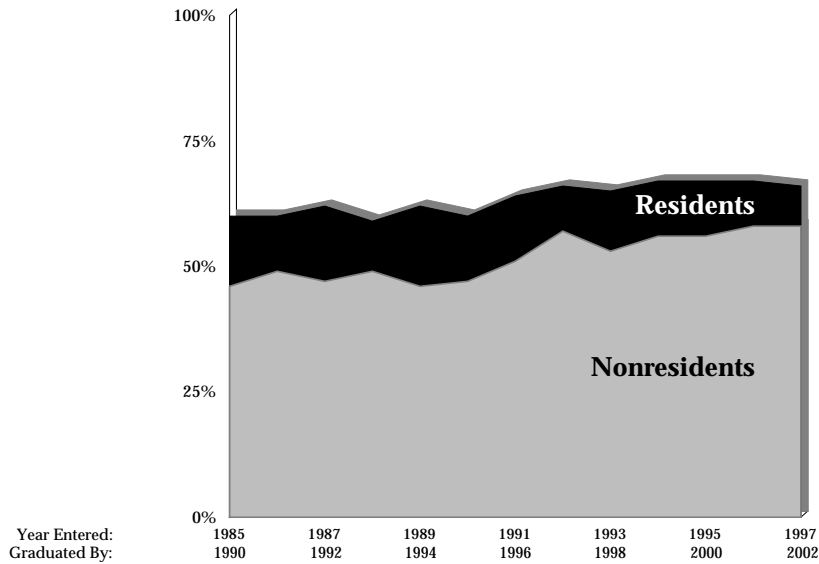
Note: The persistence rates reflect the number of students graduated and/or enrolled each semester as a percentage of the original entering class. For example, tenth semester persistence includes those who graduated AND those who have not yet completed a degree but are still enrolled. The columns in bold indicate persistence at the end of the first and second years, i.e., those who returned for their second and third years.

Persistence of New Freshmen

Persistence by Residency

Class of 1997

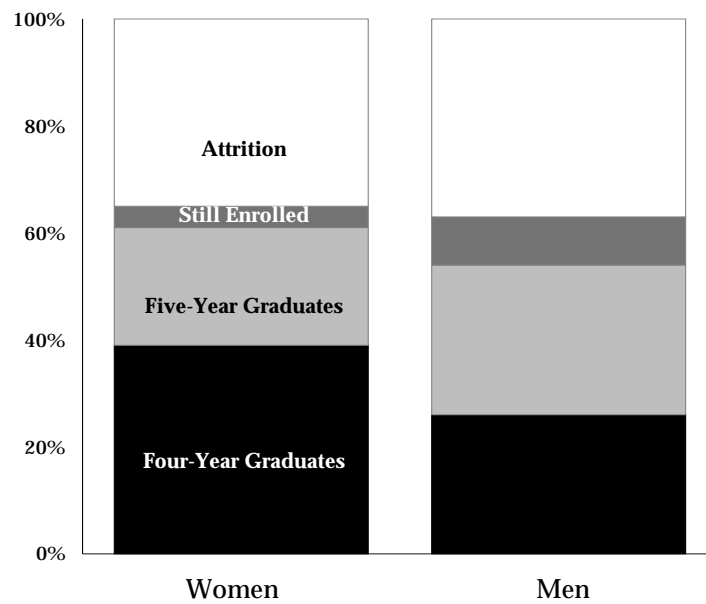
Residents - 66%
Nonresidents - 58%



Persistence by Gender

Class of 1997

Women - 64%
Men - 63%



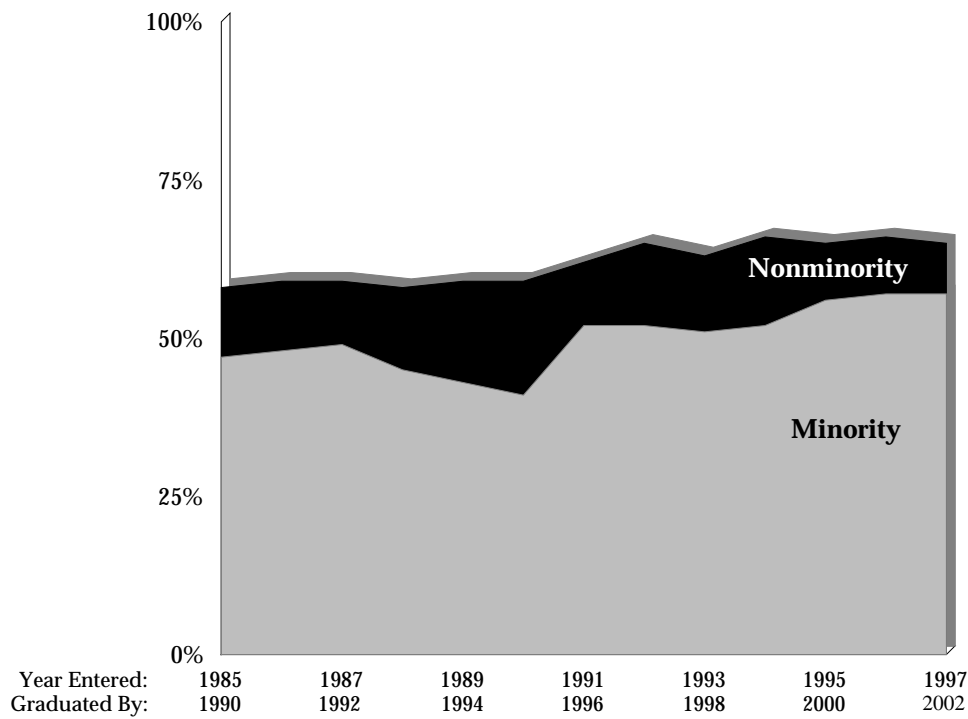
Persistence of New Freshmen

Persistence by Ethnicity

Class of 1997

Nonminority - 65%

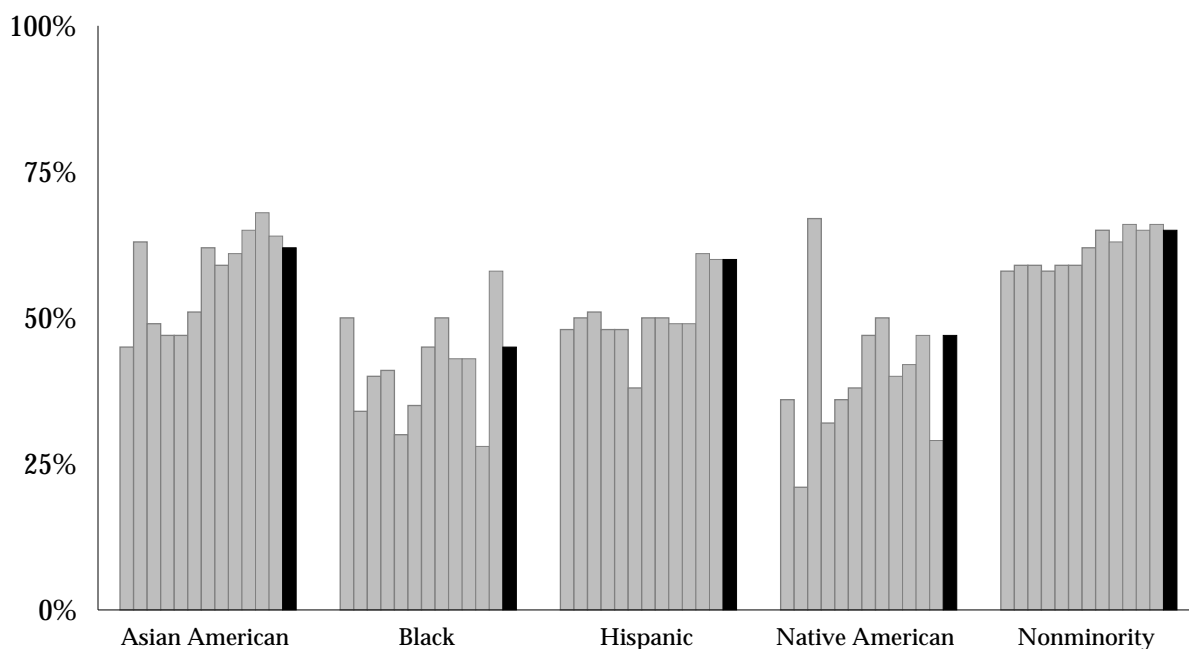
Minority - 57%



Note: Ethnicity is self-reported. Students indicating their ethnicity as Other or International have been included in the nonminority population.

Persistence of New Freshmen

Persistence by Ethnicity

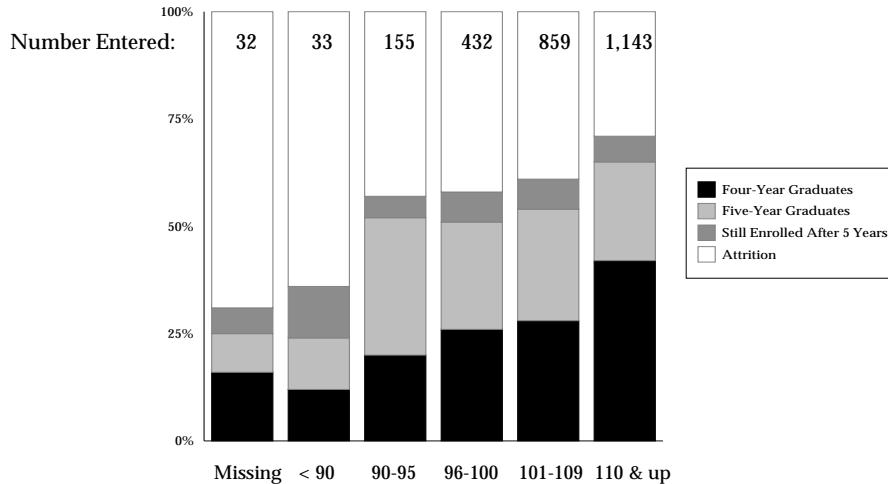


Number Entered and Percent Persisting

| | <u>Asian American</u> | | <u>Black</u> | | <u>Hispanic</u> | | <u>Native American</u> | | <u>Nonminority</u> | |
|------|-----------------------|-----|--------------|-----|-----------------|-----|------------------------|-----|--------------------|-----|
| 1985 | 44 | 45% | 44 | 50% | 91 | 48% | 11 | 36% | 2,448 | 58% |
| 1986 | 64 | 63% | 47 | 34% | 111 | 50% | 19 | 21% | 2,508 | 59% |
| 1987 | 63 | 49% | 55 | 40% | 115 | 51% | 15 | 67% | 2,621 | 59% |
| 1988 | 108 | 47% | 74 | 41% | 165 | 48% | 22 | 32% | 2,838 | 58% |
| 1989 | 99 | 47% | 74 | 30% | 151 | 48% | 25 | 36% | 2,566 | 59% |
| 1990 | 80 | 51% | 78 | 35% | 149 | 38% | 21 | 38% | 1,791 | 59% |
| 1991 | 91 | 62% | 65 | 45% | 161 | 50% | 32 | 47% | 1,846 | 62% |
| 1992 | 87 | 59% | 36 | 50% | 151 | 50% | 20 | 50% | 1,931 | 65% |
| 1993 | 108 | 61% | 42 | 43% | 151 | 49% | 37 | 40% | 1,859 | 63% |
| 1994 | 94 | 65% | 35 | 43% | 159 | 49% | 31 | 42% | 1,976 | 66% |
| 1995 | 95 | 68% | 54 | 28% | 153 | 61% | 19 | 47% | 2,256 | 65% |
| 1996 | 95 | 64% | 62 | 58% | 154 | 60% | 38 | 29% | 2,384 | 66% |
| 1997 | 87 | 62% | 47 | 45% | 158 | 60% | 30 | 47% | 2,331 | 65% |

Persistence of New Freshmen

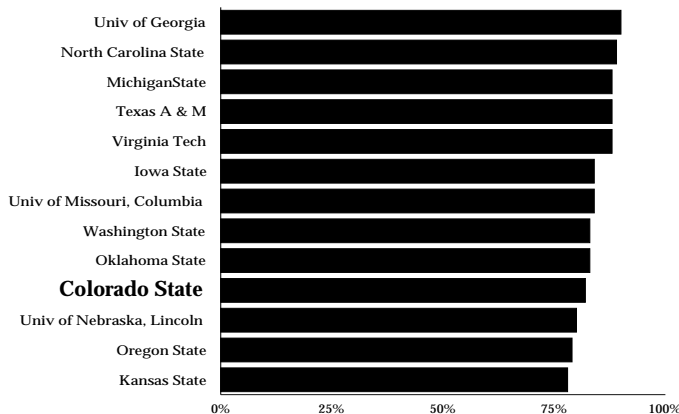
Persistence by CCHE Index - 1997 Freshmen



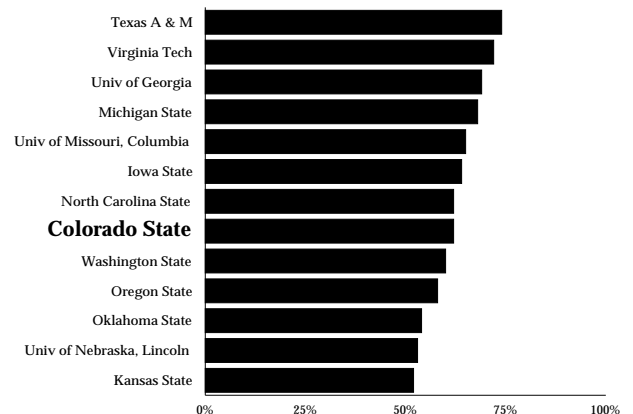
Note: The CCHE Index is an admissions standard developed by the Colorado Commission on Higher Education which is based on high school work and test scores.

Comparison of Peer Institutions

Average Percentage of Entering Freshmen Returning for Sophomore Year (1997-2000)



Average Percentage of Students Entering in Fall 1992-95 and Graduating in Six Years

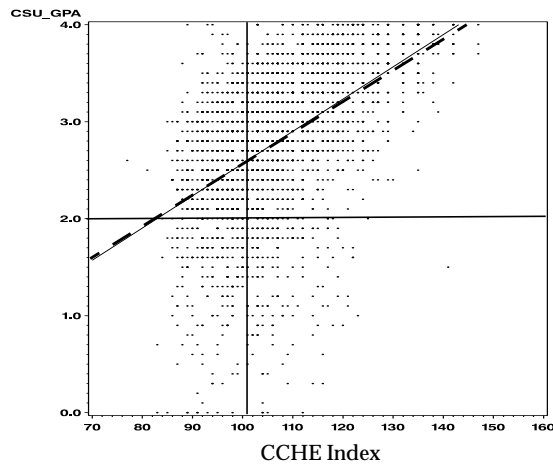


Source: Peer comparison data from U.S. News and World Report

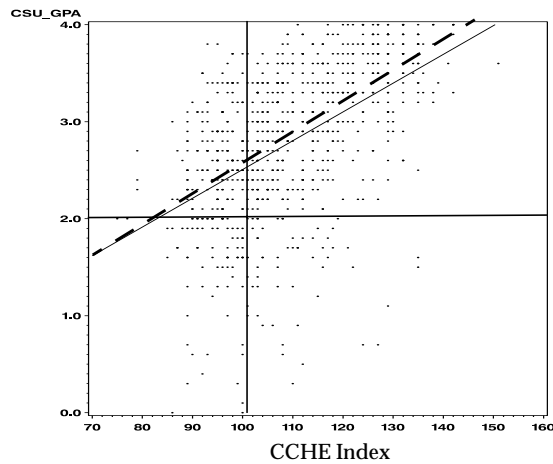
Undergraduate Grade Point Average

Regression of First-Year CSU Grade Point Average and CCHE Index for Fall 2000 Entering Freshmen

Residents



Nonresidents



All Freshmen - - - - -

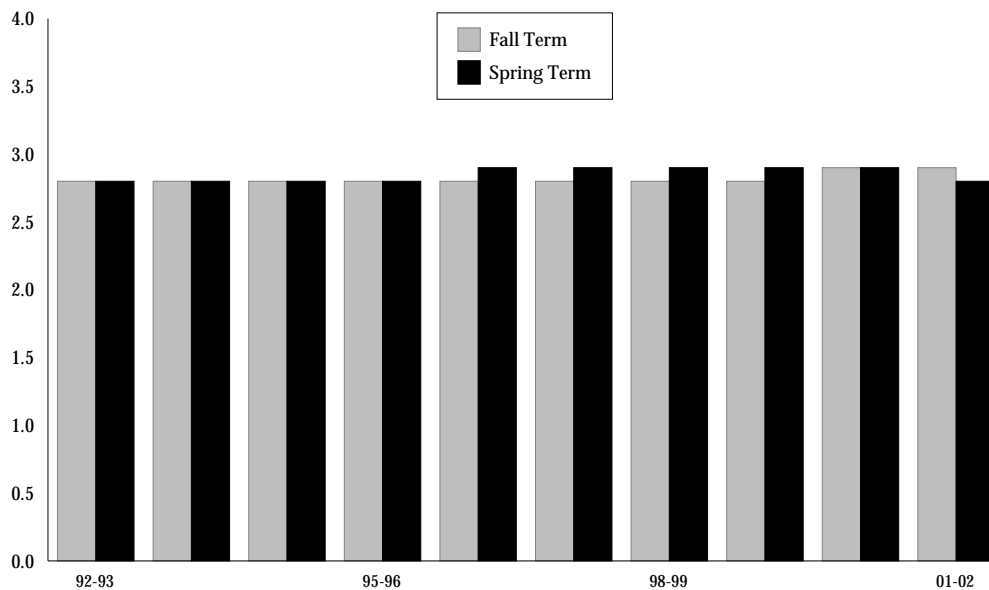
Note: Includes grade point average for Fall 2000 and Spring 2001.

Undergraduate Grade Point Average

History of Undergraduate Term GPA by College

| | Fall 1997 | Fall 1998 | Fall 1999 | Fall 2000 | Fall 2001 |
|--------------------------|-----------|-----------|-----------|-----------|-----------|
| Agricultural Sciences | 2.89 | 2.92 | 2.88 | 2.90 | 2.93 |
| Applied Human Sciences | 2.89 | 2.92 | 2.92 | 2.93 | 2.95 |
| Business | 3.00 | 3.01 | 3.02 | 3.07 | 3.09 |
| Engineering | 2.79 | 2.83 | 2.83 | 2.86 | 2.77 |
| Intra-University | 2.61 | 2.64 | 2.58 | 2.61 | 2.70 |
| Liberal Arts | 2.84 | 2.85 | 2.86 | 2.89 | 2.90 |
| Natural Resources | 2.83 | 2.81 | 2.73 | 2.85 | 2.91 |
| Natural Sciences | 2.84 | 2.78 | 2.82 | 2.82 | 2.82 |
| Veterinary Med & Bio Sci | 2.90 | 2.83 | 2.77 | 2.79 | 2.91 |
| University Summary | 2.83 | 2.84 | 2.83 | 2.86 | 2.88 |

History of Undergraduate Term GPA

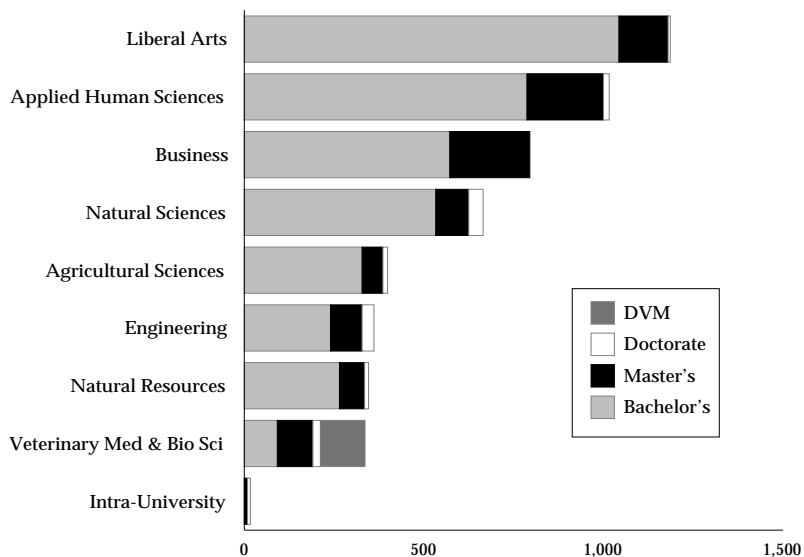


Degrees Awarded

Degrees Awarded by College - 2001-02

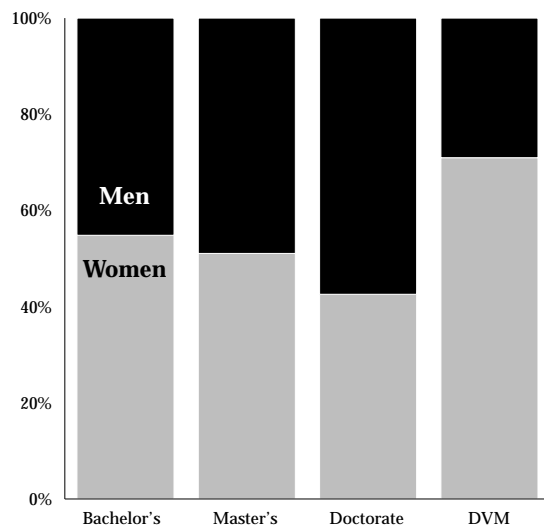
| | Bachelor's Degrees | Master's Degrees | Doctoral Degrees | DVM Degrees | Total Degrees |
|--------------------------|--------------------|------------------|------------------|-------------|---------------|
| Agricultural Sciences | 328 | 58 | 13 | - | 399 |
| Applied Human Sciences | 787 | 213 | 16 | - | 1,016 |
| Business | 572 | 223 | - | - | 795 |
| Engineering | 240 | 88 | 33 | - | 361 |
| Intra-University | - | 9 | 8 | - | 17 |
| Liberal Arts | 1,043 | 137 | 6 | - | 1,186 |
| Natural Resources | 265 | 70 | 11 | - | 346 |
| Natural Sciences | 533 | 92 | 40 | - | 665 |
| Veterinary Med & Bio Sci | 92 | 99 | 21 | 124 | 336 |
| University Summary | 3,860 | 989 | 148 | 124 | 5,121 |

Total Degrees Awarded



Degrees Awarded

Degrees Awarded by Gender



Degrees Awarded by Ethnicity

| | Bachelor's Degrees | Master's Degrees | Doctoral Degrees | DVM Degrees | Total Degrees |
|-----------------|--------------------|------------------|------------------|-------------|---------------|
| Asian | 99 | 31 | 5 | 9 | 144 |
| Black | 51 | 26 | 2 | 2 | 81 |
| Hispanic | 190 | 29 | 2 | 10 | 231 |
| Native American | 42 | 10 | 1 | 4 | 57 |
| Nonminority | 3,478 | 893 | 138 | 99 | 4,608 |
| Total | 3,860 | 989 | 148 | 124 | 5,121 |

Degrees Awarded

History of Bachelor's Degrees Awarded

| | 1997-98 | 1998-99 | 1999-00 | 2000-01 | 2001-02 | Five-Year Change |
|--------------------------|---------|---------|---------|---------|---------|------------------|
| Agricultural Sciences | 300 | 311 | 306 | 356 | 328 | 9.3% |
| Applied Human Sciences | 746 | 754 | 741 | 759 | 787 | 5.5% |
| Business | 496 | 546 | 587 | 659 | 572 | 15.3% |
| Engineering | 217 | 221 | 226 | 229 | 240 | 10.6% |
| Liberal Arts | 912 | 913 | 890 | 975 | 1,043 | 14.4% |
| Natural Resources | 287 | 292 | 252 | 299 | 265 | -7.7% |
| Natural Sciences | 540 | 557 | 523 | 498 | 533 | -1.3% |
| Veterinary Med & Bio Sci | 123 | 109 | 96 | 85 | 92 | -25.2% |
| University Summary | 3,621 | 3,703 | 3,621 | 3,860 | 3,860 | 6.6% |

History of Master's Degrees Awarded

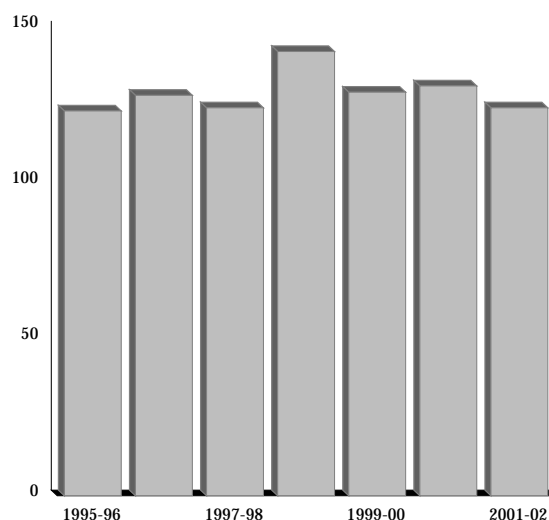
| | 1997-98 | 1998-99 | 1999-00 | 2000-01 | 2001-02 | Five-Year Change |
|--------------------------|---------|---------|---------|---------|---------|------------------|
| Agricultural Sciences | 55 | 55 | 48 | 51 | 58 | 5.5% |
| Applied Human Sciences | 186 | 216 | 197 | 216 | 213 | 14.5% |
| Business | 231 | 250 | 309 | 264 | 223 | -3.5% |
| Engineering | 135 | 107 | 131 | 83 | 88 | -34.8% |
| Intra-University | 6 | 10 | 10 | 12 | 9 | 50.0% |
| Liberal Arts | 129 | 137 | 120 | 130 | 137 | 6.2% |
| Natural Resources | 62 | 56 | 61 | 57 | 70 | 12.9% |
| Natural Sciences | 63 | 60 | 88 | 73 | 92 | 46.0% |
| Veterinary Med & Bio Sci | 47 | 61 | 89 | 64 | 99 | 110.6% |
| University Summary | 914 | 952 | 1,053 | 950 | 989 | 8.2% |

Degrees Awarded

History of Doctoral Degrees Awarded

| | 1997-98 | 1998-99 | 1999-00 | 2000-01 | 2001-02 | Five-Year Change |
|--------------------------|---------|---------|---------|---------|---------|------------------|
| Agricultural Sciences | 16 | 16 | 24 | 18 | 13 | -18.8% |
| Applied Human Sciences | 31 | 18 | 24 | 24 | 16 | -48.4% |
| Engineering | 46 | 39 | 31 | 24 | 33 | -28.3% |
| Intra-University | 5 | 8 | 9 | 6 | 8 | 60.0% |
| Liberal Arts | 5 | 8 | 8 | 7 | 6 | 20.0% |
| Natural Resources | 24 | 17 | 15 | 5 | 11 | -54.2% |
| Natural Sciences | 58 | 61 | 47 | 52 | 40 | -31.0% |
| Veterinary Med & Bio Sci | 29 | 21 | 22 | 21 | 21 | -27.6% |
| University Summary | 214 | 188 | 180 | 157 | 148 | -30.8% |

History of Professional Veterinary Medicine Degrees Awarded

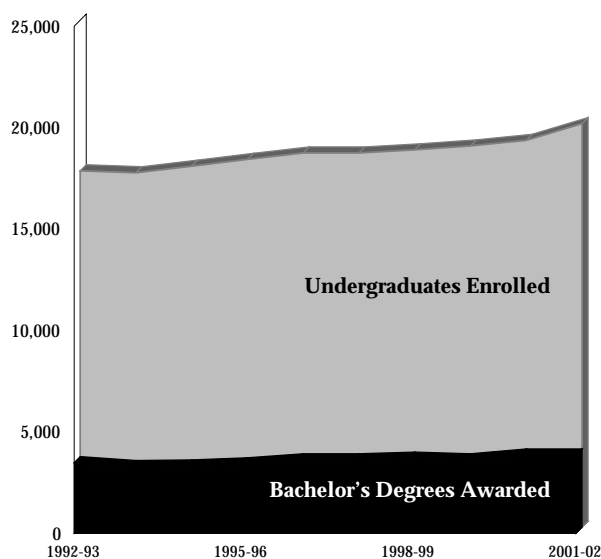


Degrees Awarded

History of Degrees Awarded

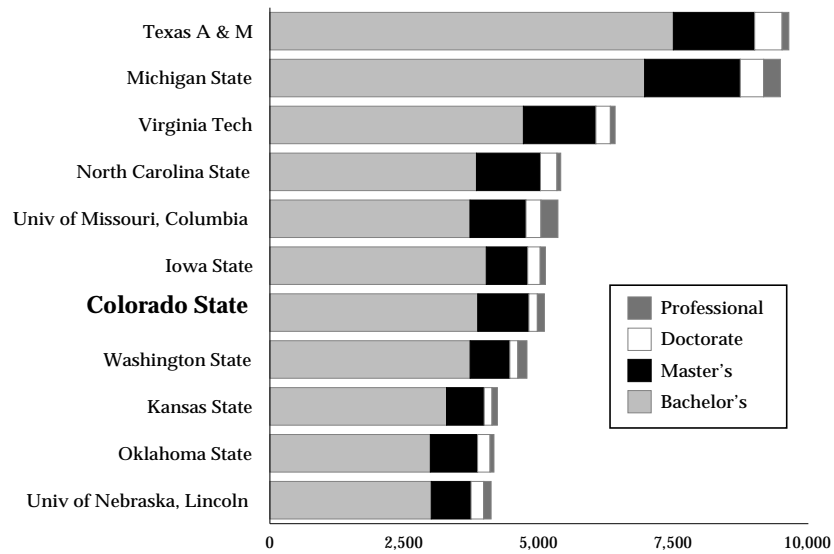
| | Year First Degree Awarded | Degrees Awarded to Date |
|---------------------------------------|---------------------------|-------------------------|
| Bachelor's Degrees | 1884 | 124,844 |
| Master's Degrees | 1893 | 29,474 |
| Doctoral Degrees | 1955 | 5,849 |
| Doctor of Veterinary Medicine Degrees | 1904 | 6,112 |
| Total Degrees Awarded | | 166,279 |

Bachelor's Degrees Awarded Compared to Undergraduates Enrolled



Degrees Awarded

Comparison of Peer Institutions Degrees Awarded - 2001-02



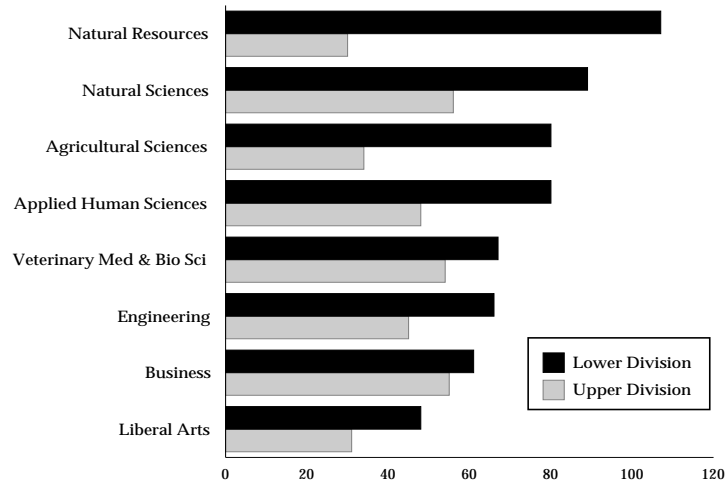
Undergraduate Class Size

Average Class Size by College - Academic Year 2001-02

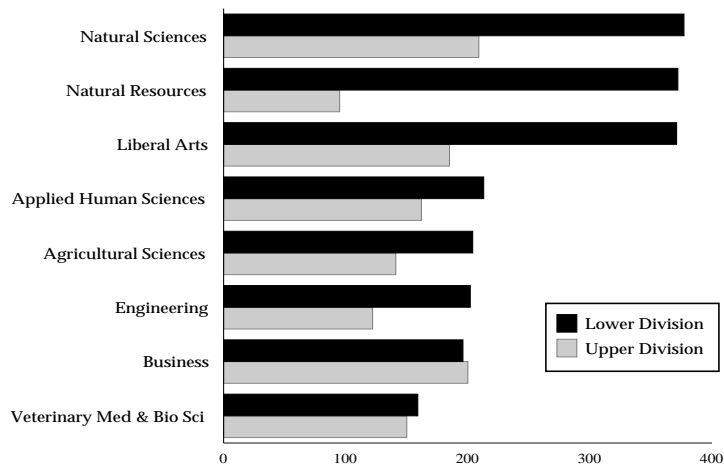
| | Lower Division Lectures | Upper Division Lectures | Lower Division Labs | Upper Division Labs |
|-------------------------------------|----------------------------|----------------------------|------------------------|------------------------|
| Agricultural Sciences | | | | |
| Number of Sections | 40 | 121 | 72 | 91 |
| Mean Class Size | 80 | 34 | 25 | 20 |
| Minimum Class Size | 11 | 1 | 4 | 1 |
| Maximum Class Size | 204 | 141 | 133 | 62 |
| Applied Human Sciences | | | | |
| Number of Sections | 126 | 184 | 291 | 181 |
| Mean Class Size | 80 | 48 | 25 | 21 |
| Minimum Class Size | 5 | 7 | 1 | 3 |
| Maximum Class Size | 213 | 162 | 74 | 46 |
| Business | | | | |
| Number of Sections | 80 | 155 | 50 | 8 |
| Mean Class Size | 61 | 55 | 29 | 95 |
| Minimum Class Size | 20 | 9 | 13 | 16 |
| Maximum Class Size | 196 | 200 | 40 | 199 |
| Engineering | | | | |
| Number of Sections | 37 | 94 | 69 | 98 |
| Mean Class Size | 66 | 45 | 19 | 20 |
| Minimum Class Size | 4 | 1 | 1 | 4 |
| Maximum Class Size | 202 | 122 | 53 | 88 |
| Liberal Arts | | | | |
| Number of Sections | 836 | 506 | 176 | 158 |
| Mean Class Size | 48 | 31 | 20 | 16 |
| Minimum Class Size | 3 | 3 | 1 | 1 |
| Maximum Class Size | 371 | 185 | 235 | 84 |
| Natural Resources | | | | |
| Number of Sections | 25 | 118 | 57 | 72 |
| Mean Class Size | 107 | 30 | 18 | 20 |
| Minimum Class Size | 12 | 3 | 2 | 1 |
| Maximum Class Size | 372 | 95 | 26 | 81 |
| Natural Sciences | | | | |
| Number of Sections | 302 | 174 | 513 | 146 |
| Mean Class Size | 89 | 56 | 25 | 15 |
| Minimum Class Size | 1 | 1 | 2 | 1 |
| Maximum Class Size | 377 | 209 | 225 | 29 |
| Veterinary Med & Bio Sci | | | | |
| Number of Sections | 27 | 55 | 3 | 34 |
| Mean Class Size | 67 | 54 | 50 | 28 |
| Minimum Class Size | 6 | 1 | 15 | 5 |
| Maximum Class Size | 159 | 150 | 71 | 59 |
| University Summary | | | | |
| Number of Sections | 1,507 | 1,424 | 1,183 | 788 |
| Mean Class Size | 62 | 41 | 23 | 19 |
| Minimum Class Size | 1 | 1 | 1 | 1 |
| Maximum Class Size | 377 | 209 | 235 | 88 |

Undergraduate Class Size

Average Mean Class Size for Lecture Courses

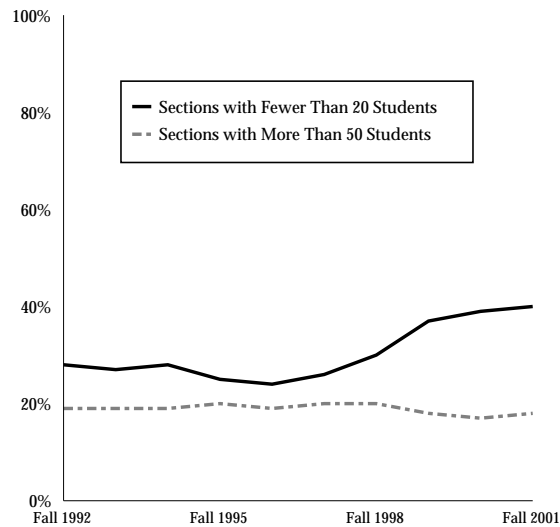


Maximum Class Size for Lecture Courses



Undergraduate Class Size

Percentage of Undergraduate Sections with Fewer Than 20 or More Than 50 Students



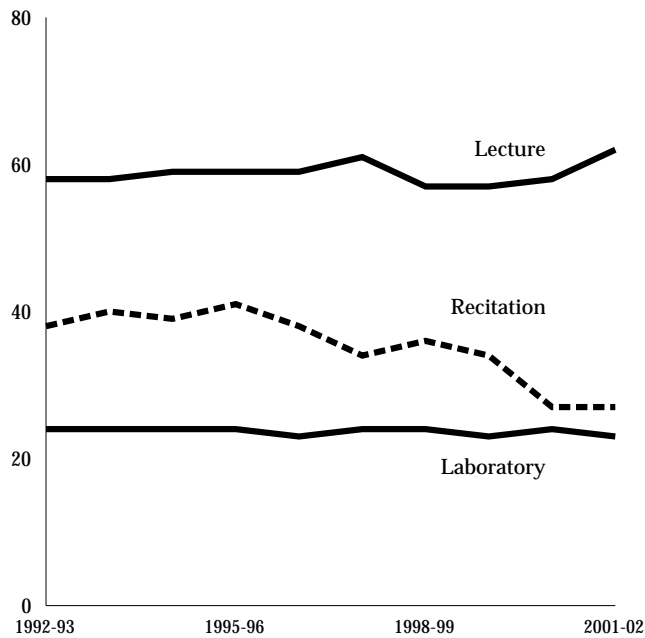
History of Average Mean Class Size

| | AY 1997-98 | AY 1998-99 | AY 1999-00 | AY 2000-01 | AY 2001-02 | Five-Year Change |
|-------------------|---------------|---------------|---------------|---------------|---------------|---------------------|
| Lecture | | | | | | |
| Lower Division | 61 | 57 | 57 | 58 | 62 | 1.6% |
| Upper Division | 39 | 39 | 38 | 39 | 41 | 5.1% |
| Laboratory | | | | | | |
| Lower Division | 24 | 24 | 23 | 24 | 23 | -4.2% |
| Upper Division | 20 | 19 | 18 | 19 | 19 | -5.0% |
| Recitation | | | | | | |
| Lower Division | 34 | 36 | 34 | 27 | 27 | -20.6% |
| Upper Division | 27 | 31 | 29 | 28 | 29 | 7.4% |

Note: Beginning in 1997, data for the above graph are calculated using criteria required by U.S. News & World Report.

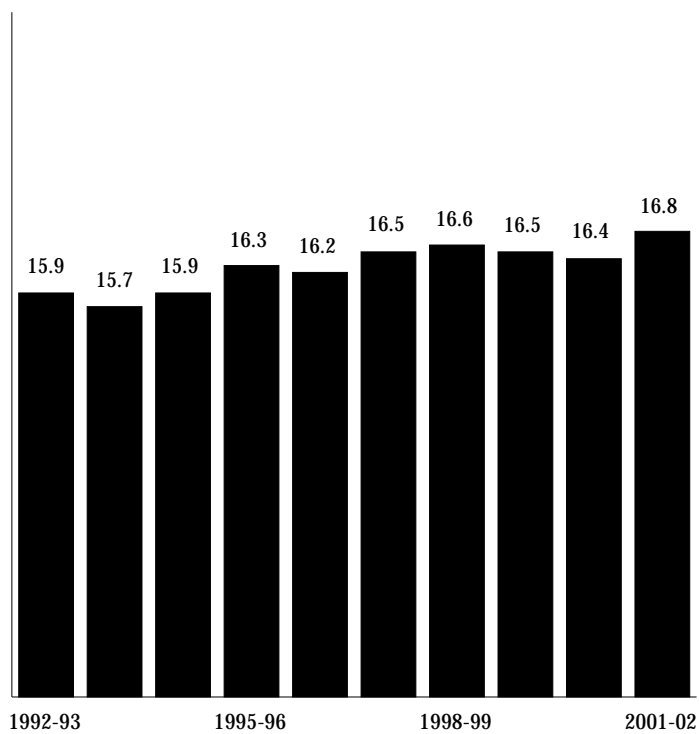
Undergraduate Class Size

History of Lower Division Average Mean Class Size



Student-Faculty Ratio

History of Student-Faculty Ratio

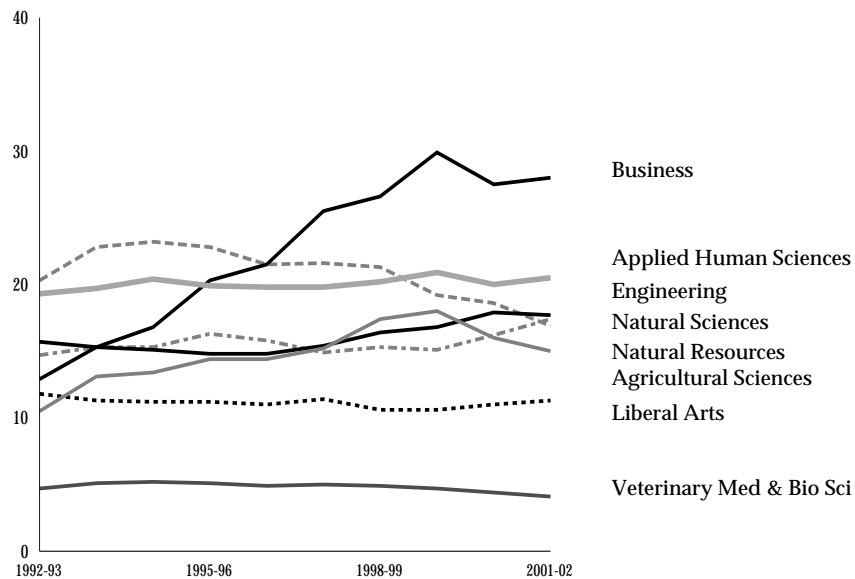


Student-Faculty Ratio

History of Student-Faculty Ratio by College

| | AY 1997-98 | AY 1998-99 | AY 1999-00 | AY 2000-01 | AY 2001-02 |
|--------------------------|------------|------------|------------|------------|------------|
| Agricultural Sciences | 15.2 | 17.4 | 18.0 | 16.0 | 15.0 |
| Applied Human Sciences | 19.8 | 20.2 | 20.9 | 20.0 | 20.5 |
| Business | 25.5 | 26.6 | 29.9 | 27.5 | 28.0 |
| Engineering | 15.4 | 16.4 | 16.8 | 17.9 | 17.7 |
| Liberal Arts | 11.4 | 10.6 | 10.6 | 11.0 | 11.3 |
| Natural Resources | 21.6 | 21.3 | 19.2 | 18.6 | 16.9 |
| Natural Sciences | 14.9 | 15.3 | 15.1 | 16.2 | 17.4 |
| Veterinary Med & Bio Sci | 5.0 | 4.9 | 4.7 | 4.4 | 4.1 |

Student-Faculty Ratio by College

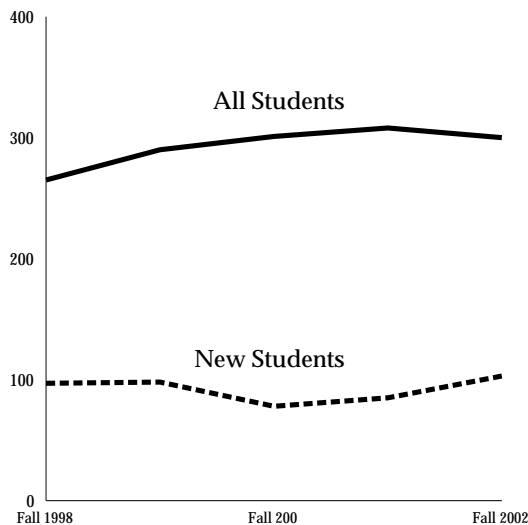


Other Student Enrollment

Undergraduate WUE Enrollment by State

| | Fall 1998 | Fall 1999 | Fall 2000 | Fall 2001 | Fall 2002 | Five-Year Change |
|----------------------|-----------|-----------|-----------|-----------|-----------|------------------|
| Alaska | 32 | 37 | 37 | 38 | 39 | 21.9% |
| Arizona | 0 | 0 | 5 | 11 | 13 | N/A |
| Hawaii | 57 | 62 | 53 | 44 | 30 | -47.4% |
| Idaho | 12 | 13 | 16 | 10 | 12 | 0.0% |
| Montana | 29 | 31 | 23 | 18 | 25 | -13.8% |
| Nevada | 19 | 21 | 22 | 19 | 20 | 5.3% |
| New Mexico | 54 | 59 | 53 | 58 | 55 | 1.9% |
| North Dakota | 7 | 8 | 9 | 8 | 9 | 28.6% |
| Oregon | 20 | 16 | 23 | 26 | 24 | 20.0% |
| South Dakota | 8 | 16 | 23 | 18 | 19 | 137.5% |
| Utah | 9 | 7 | 12 | 13 | 17 | 88.9% |
| Washington | 0 | 5 | 7 | 14 | 14 | N/A |
| Wyoming | 18 | 23 | 27 | 31 | 30 | 66.7% |
| Total WUE Enrollment | 265 | 290 | 301 | 308 | 307 | 15.8% |
| New WUE Students | 97 | 98 | 78 | 85 | 103 | 6.2% |

History of WUE Enrollment



Note: WUE is the Western Undergraduate Exchange, a program of the Western Interstate Commission for Higher Education (WICHE). In fall of 2000, WUE became a scholarship program for students from certain western states with a CCHE Index of 126 or above.